



APPLICATION FIELD



01/16

WAFER BUTTERFLY
VALVE



17/26

DOUBLE FLANGED
BUTTERFLY VALVE



27/30

WAFER BUTTERFLY
CHECK VALVE



31

STATIC BALANCING
VALVE



32

FLANGED
Y-STRAINER



33/36

GATE VALVE





Description of the Series Product:

Small size, light weight and easy maintenance, the above series of valves can be used as a device to cut-off or regulate the flow in various medium pipes. Through selecting different materials of disc and seal seat, as well as the pinless connection between disc and stem, the valve can be applied to worse conditions, such as desulphurization vacuum, sea water desalinization. Lug butterfly valve allows downstream pipelines and equipments online repair, and it can be installed on pipe ends as exhaust valve.

Characteristic of Product

- Small in size & light in weight and easy maintenance. It can be mounted wherever needed.
- Simple, compact structure, quick 90 degree on-off operation.
- Disc has two-way bearing, perfect seal, without leakage under the pressure test.
- Flow curve tending to straight-line. Excellent regulation performance.
- Various kinds of materials, applicable to different media.
- Strong wash and brush resistance, and can fit to bad working condition.
- Center plate structure, small torque of open and close.
- Long service life. Standing the test of ten thousands opening and closing operation.
- Can be used in cutting off and regulating media.

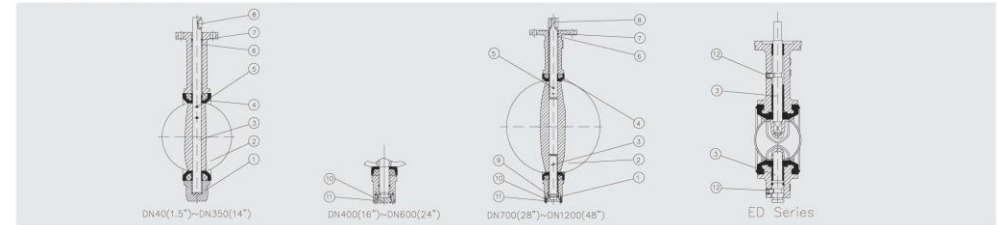
Typical application

- Water Works and Water Resource Project
- Environment Protection
- Public Facilities
- Power and Public Utilities
- Building Industry
- Petroleum, Chemical
- Steel, Metallurgy
- Paper making industry
- Food, Beverage

Technical Data

Series	MD PD BD AD ED KD UD FD SD	HD	GD
DN Nominal Diameter	DN25~1200 (1"~48")	DN25~600 (1"~24")	DN50~600(2"~24")
PN Nominal Pressure	1.0MPa (150PSI)	1.6MPa (200PSI)	2.0MPa(285PSI)
Testing Pressure	Shell	1.5MPa (225PSI)	2.4MPa (300PSI)
	Sealing	1.1MPa (165PSI)	1.76MPa (220PSI)
Working Temperature	-45~+150		
Suitable Media	Fresh water, Sewage, Sea water, Air, Vapour, Food, Medicine, Oils, Acids, Alkalis, Salts etc.		

Material of Main Parts



1. Body	Code
CI	Z
DI	Q
WCB	C
ALB	T
CF8	P
CF8M	H
2. Disc	Code
DI	B1
ALB	B2
Rubber Lined Disc	B3
Duplex Stainless Steel	1.4469/2507 B4
CF8M	B5
Super Austenitic Stainless Steel	1.4529 B6
CF8	B7
Hastelloy Alloy	B8
Monel	B9
3. Stem	Code
416	
304	
316	
431	
17-4PH	

4. Seat	Code	Temperature
NR	X1	-20~+85
Hypalon	X2	-18~+135
EPDM	X3	-45~+135 Intermittence -50~+150
Neoprene	X4	-7~+93 Intermittence -7~+107
NBR	X5	-12~+82 Intermittence -12~+93
Wear-Resistant Rubber	X6	-10~+50
Viton	X7	-23~+150
Silicon	X8	-40~+200
Heat-Resistant EPDM	X9	-20~+150
White NBR	XA	-12~+82 Intermittence -12~+93
White EPDM	XB	-45~+135 Intermittence -50~+150
EPDM(NSF)	XC	-45~+135 Intermittence -50~+150
Viton B26	XD	-23~+150
PTFE	F4	+10~+150

5. Taper Pin	Code
416	
316	
431	
17-4PH	
6. Bushing	Code
Lubrized Bronze	
PTFE	
7. O-Ring	Code
NBR	
EPDM	
8. Key	Code
45 1045	
9. Bearing	Code
Bearing Steel	
10. End Cover	Code
CI	
WCB	
CF8	
CF8M	
11. Bolt	Code
Q235 Gr.33 35 1035	
304	
12. HEX Screw	Code
Q235-A Gr.33	

Flange Connection Standard:

- Series AD, BD, ED, FD, KD, MD, PD, UD, YD according to ANSI B16.1, EN 1092, AS2129.
- Series GD according to ANSI C606
- Series SD according to ANSI B1.20.1 and ISO 228-1

Face to Face Standard:

- Series MD, KD, PD, UD, YD according to ANSI B16.10;
- Series AD, BD, ED, FD according to EN 558-1.

Upper Flange Standard:

- All series can meet ISO 5211.

Note: In order to keep the policy of "continual improvement of product", we are entitled to keep improvement in design, material, quality, size and specifications etc. Forgive for no further notice.

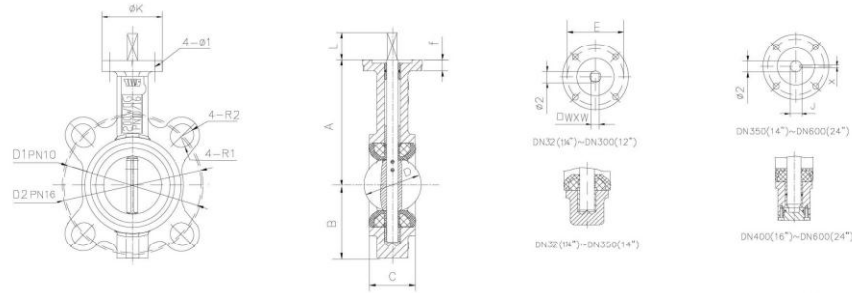
Slim Disc:

The longitudinal section area of slim disc is small, strong flow capacity.

WAFER BUTTERFLY VALVE



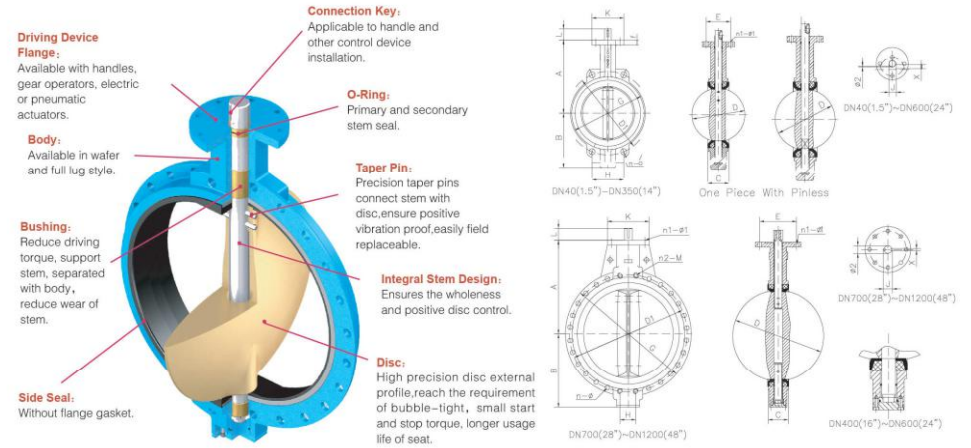
Overall & Connection Dimensions & Weight of Series YD for Wafer Butterfly Valve



PN1.0/1.6 MPa (150/200PSI)

Size		A	B	C	D	L	D1	D2	Ø1	ØK	E	R1 (PN10)	R2 (PN16)	Ø2	f	J	X	□W×W	Weight (kg)
mm	inch																		
32	1 1/4	125	73	33	36	28	100	100	7	65	50	R9.5	R9.5	12.6	12	-	-	9×9	1.6
40	1.5	125	73	33	43	28	110	110	7	65	50	R9.5	R9.5	12.6	12	-	-	9×9	1.8
50	2	125	73	43	53	28	125	125	7	65	50	R9.5	R9.5	12.6	12	-	-	9×9	2.3
65	2.5	136	82	46	64	28	145	145	7	65	50	R9.5	R9.5	12.6	12	-	-	9×9	3
80	3	142	91	46	79	28	160	160	7	65	50	R9.5	R9.5	12.6	12	-	-	9×9	3.7
100	4	163	107	52	104	28	180	180	10	90	70	R9.5	R9.5	15.77	12	-	-	11×11	5.2
125	5	176	127	56	123	28	210	210	10	90	70	R9.5	R9.5	18.92	12	-	-	14×14	6.8
150	6	197	143	56	155	28	240	240	10	90	70	R11.5	R11.5	18.92	12	-	-	14×14	8.2
200	8	230	170	60	202	38	295	295	12	125	102	R11.5	R11.5	22.1	15	-	-	17×17	14
250	10	260	204	68	250	38	350	355	12	125	102	R11.5	R14	28.45	15	-	-	22×22	23
300	12	292	240	78	302	38	400	410	12	125	102	R11.5	R14	31.6	20	-	-	22×22	32
350	14	336	267	78	333	45	460	470	14	150	125	R11.5	R14	31.6	20	34.6	8	-	43
400	16	368	325	102	390	51/60	515	525	18	175	140	R14	R15.5	33.15	22	36.15	10	-	57
450	18	400	356	114	441	51/60	565	585	18	175	140	R14	R14	37.95	22	40.95	10	-	78
500	20	438	395	127	492	57/75	620	650	18	175	140	R14	R14	41.14	22	44.12	10	-	105
600	24	562	475	154	593	70/75	725	770	22	210	165	R15.5	R15.5	50.62	22	54.62	16	-	192

Overall & Connection Dimensions & Weight for Wafer Butterfly Valve of Series MD



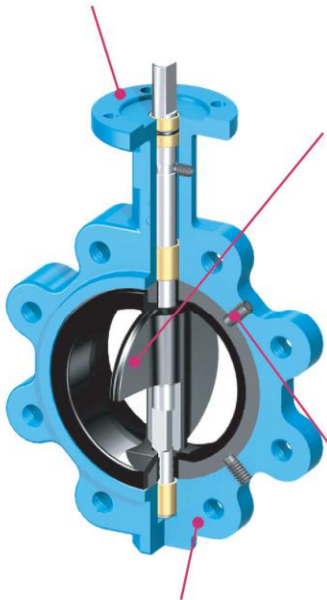
PN1.0/1.6 MPa (150/200PSI)

Size		A	B	C	D	L	H	D1	n-Ø	K	E	n1-Ø1	Ø2	G	n2-M	f	J	X	Weight (kg)
(mm)	(inch)																		
40	1.5	145	70	33	43	28	77.77	110	4-18	65	50	4-7	12.6	100	—	13	13.8	3	2.3
50	2	161	80	43	53	28	84.84	120	4-23	65	50	4-7	12.6	100	—	13	13.8	3	2.8
65	2.5	175	89	46	64	28	96.2	136.2	4-26.5	65	50	4-7	12.6	120	—	13	13.8	3	3.5
80	3	181	95	46	79	28	61.23	160	8-18	65	50	4-7	12.6	127	—	13	13.8	3	3.7
100	4	200	114	52	104	28	70.8	185	4-24.5	90	70	4-10	15.77	156	—	13	17.77	5	5.4
125	5	213	127	56	123	28	82.28	215	4-23	90	70	4-10	18.92	190	—	13	20.92	5	7.7
150	6	226	139	56	156	28	91.08	238	4-25	90	70	4-10	18.92	212	—	13	20.92	5	9.3
200	8	260	175	60	202	38	112.89	295	4-25	125	102	4-12	22.1	268	—	15	24.1	5	14.5
250	10	292	203	68	250	38	92.4	357	4-29	125	102	4-12	28.45	325	—	15	31.45	8	23
300	12	337	242	78	302	38	105.34	407	4-29	125	102	4-12	31.6	403	—	20	34.6	8	36
350	14	368	267	78	333	45	91.11	467	4-30	150	125	4-14	31.6	436	—	20	34.6	8	45
400	16	400	325	102	390	51	100.47	515	4-26	175	140	4-18	33.15	488	—	22	36.15	10	65
450	18	422	345	114	441	60	102.42	525	4-30	175	140	4-18	37.95	536	—	22	40.95	10	86
500	20	480	378	127	492	51	88.39	565	4-26	175	140	4-18	37.95	536	—	22	40.95	10	86
500	20	480	378	127	492	60	91.51	585	4-30	175	140	4-18	41.15	590	—	22	44.15	10	113
500	20	480	378	127	492	57	86.99	620	4-26	175	140	4-18	41.15	590	—	22	44.15	10	113
500	20	480	378	127	492	75	101.68	650	4-33	175	140	4-18	41.15	590	—	22	44.15	10	113
600	24	562	475	154	593	70	113.42	725	20-30	210	165	4-22	50.62	816	—	22	54.65	16	209
600	24	562	475	154	593	75	120.46	770	20-36	210	165	4-22	50.62	816	—	22	54.65	16	209
700	28	624	543	165	695	66	109.65	840	24-30	300	254	8-18	63.35	895	—	30	71.4	18	292
700	28	624	543	165	695	70	109.65	840	24-36	300	254	8-18	63.35	895	—	30	71.4	18	292
800	32	672	606	190	795	66	124	950	24-33	300	254	8-18	63.35	1015	—	30	71.4	18	396
800	32	672	606	190	795	75	124	950	24-39	300	254	8-18	63.35	1025	—	30	71.4	18	396
900	36	720	670	203	865	110	117.57	1050	24-33	300	254	8-18	75	1115	4-M30	34	84	20	520
900	36	720	670	203	865	110	117.57	1050	24-39	300	254	8-18	75	1125	4-M36	34	84	20	520
1000	40	800	735	216	965	135	129.89	1160	24-36	300	254	8-18	85	1230	4-M33	35	95	22	668
1000	40	800	735	216	965	135	130.99	1170	24-43	300	254	8-18	85	1255	4-M39	35	95	22	668
1000	40	800	735	216	965	135	135.26	1380	28-39	350	298	8-22	105	1455	4-M36	35	117	28	1080
1000	40	800	735	216	965	135	136.24	1390	28-49	350	298	8-22	105	1485	4-M45	35	117	28	1080



WAFER BUTTERFLY VALVE

2" -8" Available with handle.



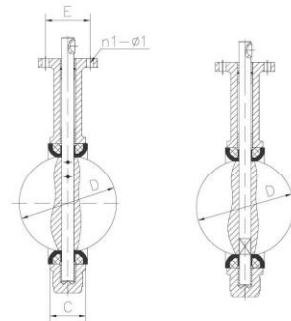
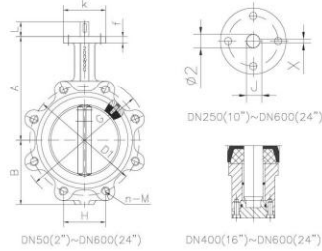
Rubber Covered Disc:

The part of disc, which contacts medium, all rubber covered, ensures the higher corrosion resistance.

Positioning Screw:

To ensure the seat in the right location.

Alignment features of lugged body allow easy installation between pipeline flanges, a real installation cost saving, can be installed in the pipe end.



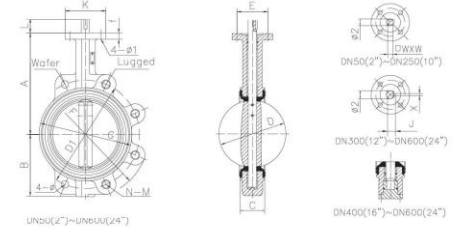
Overall & Connection Dimensions & Weight for Lug Butterfly Valve of Series MD

PN1.0/1.6 MPa(150/200PSI)

Size		A	B	C	D	L	H	D1	n-M	K	E	n1-Ø1	Ø 2	G	J	X	f	Weight (kg)			
mm	inch																				
50	2	161	80	43	53	28	88.38	125	4-M16	65	50	4-7	12.6	155	13.8	3	13	3.5			
65	2.5	175	89	46	64	28	102.54	145	4-M16	65	50	4-7	12.6	179	13.8	3	13	4.6			
80	3	181	95	46	79	28	61.23	160	8-M16	65	50	4-7	12.6	190	13.8	3	13	5.6			
100	4	200	114	52	104	28	68.88	180	8-M16	90	70	4-10	15.77	220	17.77	5	13	7.6			
125	5	213	127	56	123	28	80.36	210	8-M16	90	70	4-10	18.92	254	20.92	5	13	10.4			
150	6	226	139	56	156	28	91.84	240	8-M20	90	70	4-10	18.92	285	20.92	5	13	12.2			
200	8	260	175	60	202	38	112.89	295	8-M20	125	102	4-12	22.1	339	24.1	5	15	19.7			
							76.35												12-M20		
250	10	292	203	68	250	38	90.59	350	12-M20	125	102	4-12	28.45	406	31.45	8	15	31.4			
							91.88												12-M24		
							103.52												400	12-M20	
300	12	337	242	78	302	38	106.12	410	12-M24	125	102	4-12	31.6	477	34.6	8	20	50			
							89.74												460	16-M20	
350	14	368	267	78	333	45	91.69	470	16-M24	150	125	4-14	31.6	515	34.6	8	20	71			
							102.42												525	16-M27	
400	16	400	325	102	390	51	100.48	515	16-M24	175	140	4-18	33.15	579	36.15	10	22	98			
							60												102.42	525	16-M27
							51												88.38	565	20-M24
450	18	422	345	114	441	60	91.51	585	20-M27	175	140	4-18	37.95	627	40.95	10	22	125			
							57												96.99	620	20-M24
500	20	480	378	127	492	75	101.68	650	20-M30	175	140	4-18	41.15	696	44.15	10	22	171			
							70												113.42	725	20-M27
600	24	562	475	154	593	75	120.45	770	20-M33	210	165	4-22	50.62	821	54.65	16	22	251			

Overall & Connection Dimensions & Weight for Wafer & Lug Butterfly Valve of Series BD

PN1.0 MPa(150 PSI)



Size		A	B	C	D	L	D1	ø	K	E	N-M	ø1	ø2	G	F	f	øxwx	J	X	Weight (kg)		
mm	inch																				Wafer	Lug
DN50	2	161	80	43	53	28	125	18	65	50	4-M16	7	12.6	89	155	13	9x9	—	—	2.7	4.1	
DN65	2.5	175	89	46	64	28	145	18	65	50	4-M16	7	12.6	105	179	13	9x9	—	—	3.5	4.5	
DN80	3	181	95	46	79	28	160	18	65	50	8-M16	7	12.6	120	190	13	9x9	—	—	3.9	5.1	
DN100	4	200	114	52	104	28	180	18	90	70	8-M16	10	15.77	148	220	13	11x11	—	—	5.3	9.7	
DN125	5	213	127	56	123	28	210	18	90	70	8-M16	10	18.92	170	254	13	14x14	—	—	7.6	11.8	
DN150	6	226	139	56	156	28	240	22	90	70	8-M20	10	18.92	203	285	13	14x14	—	—	8.4	15.3	
DN200	8	260	175	60	202	38	295	22	125	102	8-M20	12	22.1	255	339	15	17x17	—	—	14.3	36.2	
DN250	10	292	203	68	250	38	350	22	125	102	12-M20	12	28.45	303	406	15	22x22	—	—	20.7	28.9	
DN300	12	337	242	78	302	38	400	22	125	102	12-M20	12	31.6	355	477	20	—	34.6	8	35.1	43.2	
DN350	14	368	267	78	333	45	460	23	125	102	16-M20	12	31.6	429	515	20	—	34.6	8	49.6	67.5	
DN400	16	400	325	102	390	51	515	28	175	140	16-M24	18	33.15	480	579	22	—	36.15	10	73.2	115.2	
DN450	18	422	345	114	441	51	565	28	175	140	20-M24	18	37.95	530	627	22	—	40.95	10	94.8	134.4	
DN500	20	480	378	127	492	57	620	28	210	165	20-M24	23	41.12	582	696	22	—	44.12	10	153.6	242.4	
DN600	24	562	475	154	593	70	725	31	210	165	20-M27	23	50.65	682	821	22	—	54.65	16	225.6	324	

Note: Series BD can offer the PN1.6 MPa product.



WAFER BUTTERFLY VALVE



Double "D" or Square Cross:

Convenient to connect with various actuators, deliver more torque.

Set Screw:

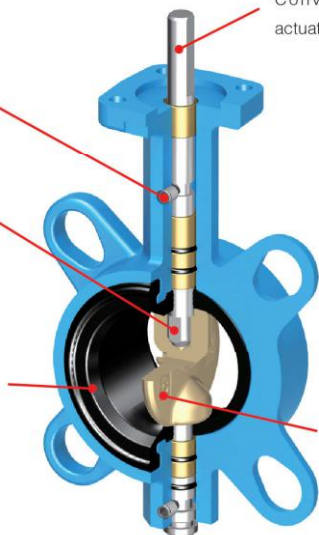
Ensures the stem in precise position.

Two-Piece Stem Square Driver:

No-space connection applies to any poor conditions.

Body Without Frame Structure:

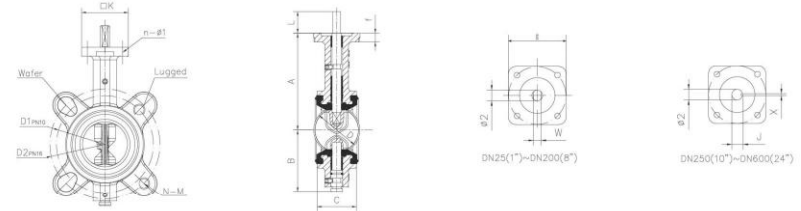
The seat can separate the body and fluid medium exactly, and convenient connection with pipe flange.



Slim Disc:

The longitudinal section area of slim disc is small, strong flow capacity.

Overall & Connection Dimensions & Weight for Wafer & Lug Butterfly Valve of Series ED

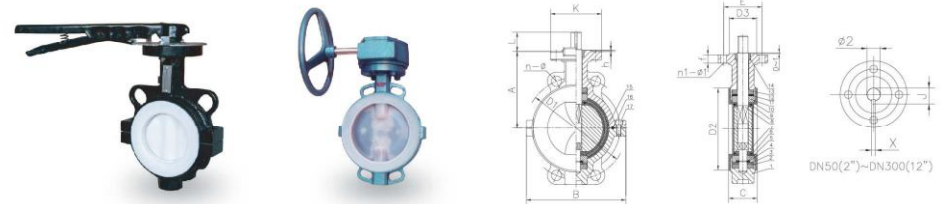


PN1.0/1.6 MPa (150/200PSI)

Size mm inch	A	B	C	D	D ₁	D ₂	N-M	L	Ø ₂	K	E	n-Ø ₁	f	J	W	X	Weight (kg)		
																	Wafer	Lug	
DN25	1	110	55	33	24	85	85	4-M12	28	10	42	4.6	12	—	7	—	—	—	
DN32	1 1/4	110	55	33	24	100	100	4-M16	28	10	42	4.6	12	—	7	—	—	—	
DN40	1.5	125	73	33	39	110	110	4-M16	28	12.6	50	5.0	4-7	12	—	8.86	—	1.8	2.5
DN50	2	125	73	43	53	125	125	4-M16	28	12.6	50	5.0	4-7	12	—	8.86	—	2.3	3.0
DN65	2.5	136	82	46	64	145	145	4-M16	28	12.6	50	5.0	4-7	12	—	8.86	—	3.3	4.4
DN80	3	142	91	46	79	160	160	8-M16	28	12.6	50	5.0	4-7	12	—	8.86	—	4.0	5.4
DN100	4	163	106	52	104	180	180	8-M16	28	15.77	70	7.0	4-10	12	—	11.1	—	5.7	7.7
DN125	5	176	128	56	123	210	210	8-M16	28	18.92	70	7.0	4-10	12	—	12.7	—	8.3	10.9
DN150	6	196	143	56	155	240	240	8-M20	28	18.92	70	7.0	4-10	12	—	12.7	—	9.8	12.7
DN200	8	228	170	60	202	295	295	8-M20 / 12-M20	38	22.1	102	10.2	4-12	15	—	15.87	—	17	22.2
DN250	10	258	204	68	250	350	355	12-M20/12-M24	38	28.45	102	10.2	4-12	15	31.45	—	8	27	36
DN300	12	292	239	78	302	400	410	12-M20/12-M24	38	31.6	102	10.2	4-12	20	34.6	—	8	39	53
DN350	14	336	267	78	333	460	470	16-M20/16-M24	45	31.6	125	12.5	4-14	20	34.6	—	8	47	73
DN400	16	368	297	102	390	515	525	16-M24/16-M27	51/60	33.15	140	14.0	4-18	22	36.15	—	10	63	96
DN450	18	400	315	114	441	565	585	20-M24/20-M27	51/60	37.95	140	14.0	4-18	22	40.95	—	10	86	125
DN500	20	440	348	127	492	620	650	20-M24/20-M30	57/75	41.14	140	14.0	4-18	22	44.12	—	10	116	174
DN600	24	525	467	154	593	725	770	20-M27/20-M33	70/75	50.65	165	16.5	4-22	22	54.65	—	16	211	253

Note: Series ED flange connection conforms to DIN 2501

Overall & Connection Dimensions & Weight for Wafer Butterfly Valve of Series FD



PN1.0 MPa(150PSI)

Size mm inch	D1	D2	K	E	D3	A	B	C	L	n-Ø	h	Ø2	n1-Ø1	f	J	X	Weight(kg)	
DN40	1.5	110	85	65	50	35	105	110	33	35	4-18	2	16	4-8	13	18	5	2.8
DN50	2	125	100	65	50	35	105	110	43	35	4-18	2	16	4-8	13	18	5	3.6
DN65	2.5	145	120	65	50	35	115	135	46	35	4-18	2	16	4-8	13	18	5	4
DN80	3	160	135	90	70	55	125	145	46	55	8-18	2	20	4-10	13	22.5	6	5.5
DN100	4	180	155	90	70	55	135	175	52	55	8-18	2	20	4-10	13	22.5	6	7.8
DN125	5	210	185	125	102	70	160	210	56	75	8-18	2	22	4-12	13	24.5	6	8.736
DN150	6	240	210	125	102	70	180	235	56	75	8-23	2	24	4-12	13	27	8	14.8
DN200	8	295	265	150	125	85	220	290	60	85	12-23	2	28	4-14	13	31	8	21.5
DN250	10	355	320	150	125	85	255	340	68	85	12-25	2	30	4-14	13	33	8	36.4
DN300	12	410	375	175	140	100	290	395	78	95	12-25	3	35	4-18	20	38	10	46.3

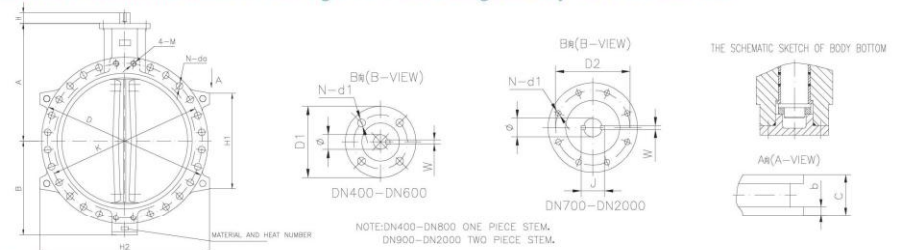
U-section Flanged Wafer Butterfly Valve

Material of Main Parts

NO.	Description	Number	Material
1	Hex Bolt	4	Gr.33
2	"O" Ring	1	NBR
3	End Cover	1	DI
4	Gasket	1	Brass
5	Down-Bushing	1	Lubrized Bronze
6	Body	1	DI
7	"O" Ring	4	NBR
8	Seat	1	EPDM
9	Down-Stem	1	420
10	Disc	1	304/316/C954/WCB+EPDM
11	Taper Pin	3	420
12	Up-Stem	1	420
13	Up-Bushing(Long)	1	Lubrized Bronze
14	Plate	1	304
15	Plate Rivets	2	L3
16	Bushing(Short)	5	Lubrized Bronze
17	Key	2	ASTM A29 1045



Overall & Connection Dimensions & Weight for Wafer & Lug Butterfly Valve of Series UD



UD-Resilient seated

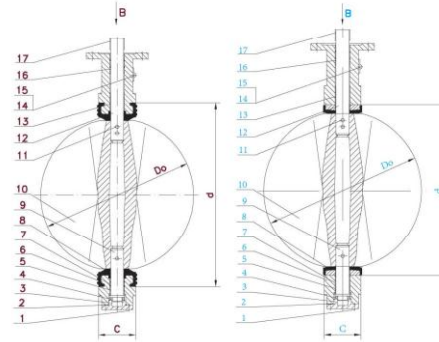
PN1.0/1.6MPa(Unit: mm, kg)

DN	A	B	H	Do	C	D	K			d		N-do		4-M		b	D1	D2	N-d1	F	Ø2	W	J	H1	H2
							10	16	10	16	10	16	10	16											
400	400	325	51	390	102	580	515	525	460	12-28	12-31	4-M24	4-M27	24.5	175	140	4-18	22	33.15	10	36.15	337	600		
450	422	345	51	441	114	640	565	585	496	16-28	16-31	4-M24	4-M27	25.5	175	140	4-18	22	37.95	10	40.95	370	660		
500	480	378	57	492	127	715	620	650	560	16-28	16-34	4-M24	4-M30	26.5	175	140	4-18	22	41.12	10	44.12	412	735		
600	562	475	70	593	154	840	725	770	658	16-31	16-37	4-M27	4-M33	30	210	165	4-22	22	50.63	16	54.65	483	860		
700	624	543	66	695	165	910	840	840	773	20-31	20-37	4-M27	4-M33	32.5	300	254	8-18	30	63.35	18	71.4	520	926		
800	672	606	66	795	190	1025	950	950	872	20-34	20-41	4-M30	4-M36	35	300	254	8-18	30	63.35	18	71.4	586	1045		
900	720	670	110	865	200	1125	1050	1050	987	24-34	24-41	4-M30	4-M36	37.5	300	254	8-18	34	75	20	84	648	1155		
1000	800	735	135	965	216	1255	1160	1170	1073	24-37	24-44	4-M33	4-M39	40	300	254	8-18	34	85	22	95	717	1285		
1100	870	806	150	1065	251	1355	1270	1270	1203	28-37	28-44	4-M33	4-M39	42.5	350	298	8-22	34	95	25	105.0	778	1385		
1200	940	878	150	1160	254	1485	1380	1390	1302	28-41	28-50	4-M36	4-M45	45	350	298	8-22	34	105	28	117.0	849	1515		
1400	1017	993	150	1359	279	1685	1590	1590	1495	28-44	28-50	8-M39	8-M45	47.5	415	356	8-33	40	120.00	32	134.0	963	1715		
1500	1080	1040	180	1457	318	1820	1700	1710	1638	28-44	28-57	8-M39	8-M52	47.5	415	356	8-33	40	140.00	36	156.0	1039	1850		
1600	1150	1132	180	1556	318	1930	1820	1820	1696	32-50	32-57	8-M45	8-M52	49	415	356	8-33	50	140.00	36	156.0	1101	1960		
1800	1280	1270	230	1775	356	2130	2020	2020	1893	36-50	36-57	8-M45	8-M52	52	475	406	8-40	55	160.00	40	178.0	1213	2160		
2000	1390	1350	280	1955	406	2345	2230	2230	2105	40-50	40-62	8-M45	8-M56	55	475	406	8-40	55	160.00	40	178.0	1334	2375		

Technical Specification

Nominal Pressure	1.0 MPa	1.6 MPa
Shell	1.5 MPa	2.4 MPa
Sealing	1.1 MPa	1.76 MPa
Working Pressure	1.0 MPa	1.6 MPa

Technical requirement
 1. End flange standard according to EN1092
 2. Face to Face standard according to EN558-1
 3. Upper flange standard according to ISO 5211.



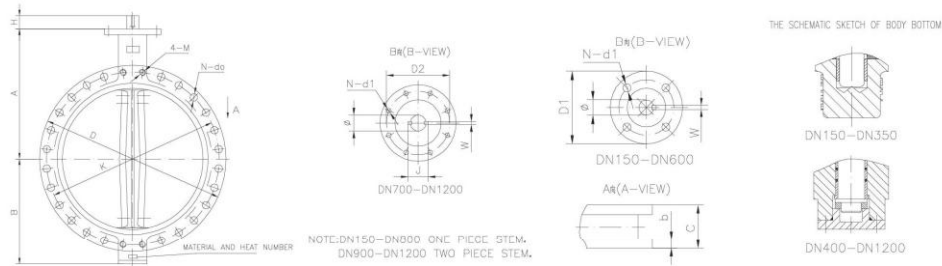
**FULL RUBBER
SEALED CENTER LINE
FLANGED BUTTERFLY VALVE**





WAFER BUTTERFLY VALVE

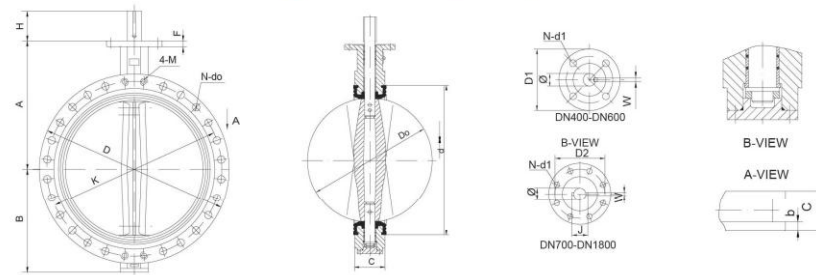
Overall & Connection Dimensions & Weight for Wafer & Lug Butterfly Valve of Series UD



UD-Hard seated

DN	A	B	H	Do	C	D	K		d		N-do		4-M		b	D1	D2	N-d1	F	Ø2	W	J
							10	16	10	16	10	16	10	16								
150	226	139	28	156	56	285	240	240	188	8-23	8-23	—	—	19	90	70	4-10	13	18.92	5	20.92	
200	260	175	38	202	60	340	295	295	238	8-23	12-23	—	—	20	125	102	4-12	15	22.10	5	24.1	
250	292	203	38	250	68	405	350	355	292	12-23	12-28	—	—	22	125	102	4-12	15	28.45	8	31.45	
300	337	242	38	302	78	460	400	410	344	12-23	12-28	—	—	24.5	125	102	4-12	20	31.60	8	34.6	
350	368	267	45	333	78	520	460	470	374	16-23	16-28	—	—	24.5	150	125	4-14	20	31.60	8	34.6	
400	400	325	51	390	102	580	515	525	440	12-28	12-31	4-M24	4-M27	24.5	175	140	4-18	22	33.15	10	36.15	
450	422	345	51	441	114	640	565	585	491	16-28	16-31	4-M24	4-M27	25.5	175	140	4-18	22	37.95	10	40.95	
500	480	378	57	492	127	715	620	650	535	16-28	16-34	4-M24	4-M30	26.5	175	140	4-18	22	41.12	10	44.12	
600	562	475	70	593	154	840	725	770	654	16-31	16-37	4-M27	4-M33	30	210	165	4-22	22	50.62	16	54.65	
700	624	543	66	695	165	910	840	840	744	20-31	20-37	4-M27	4-M33	32.5	300	254	4-18	30	63.35	18	71.4	
800	672	606	66	795	190	1025	950	950	850	20-34	20-41	4-M30	4-M36	35	300	254	4-18	30	63.35	18	71.4	
900	720	670	110	865	200	1125	1050	1050	947	24-34	24-41	4-M30	4-M36	37.5	300	254	8-18	34	75	20	84	
1000	800	735	135	965	216	1255	1160	1170	1053	24-37	24-44	4-M33	4-M39	40	300	254	8-18	34	85	22	95	
1100	870	806	150	1065	251	1355	1270	1270	1153	28-37	28-44	4-M33	4-M39	42.5	350	298	8-22	34	95	25	105.0	
1200	940	878	150	1160	254	1485	1380	1390	1264	28-41	28-50	4-M36	4-M45	45	350	298	8-22	34	105	28	117.0	

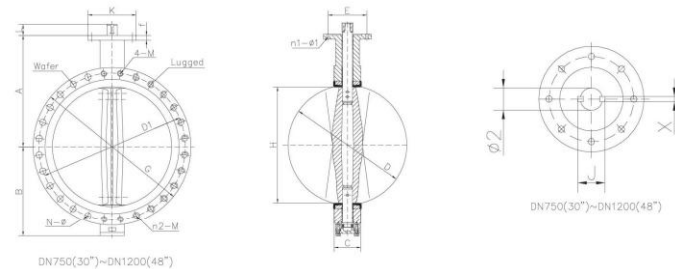
Overall & Connection Dimensions & Weight for Wafer & Lug Butterfly Valve of Series UD



CWP=200PSI

SIZE	A	B	H	Do	C	D	K	d	N-do	4-M	b	D1	D2	N-d1	F	Ø	W	J	Weight(kg)
16"	360	320	60	390	102	597	539.7	460	12-28.4	4-1	36.6	175	140	4-18	22	37.95	10	41.0	122
18"	400	360	60	441	114	635	577.8	496	12-31.8	4-1 1/8	39.6	175	140	4-18	22	42.86	12	45.9	169
20"	455	390	75	492	127	699	635.0	560	16-31.8	4-1 1/8	42.7	175	140	4-18	22	45.72	14	49.2	190
22"	500	420	75	544	154	749	692.1	610	16-35.1	4-1 1/4	46.0	175	140	4-22	22	45.72	14	49.2	248
24"	520	450	75	592	151	813	749.3	658	16-35.1	4-1 1/4	47.8	210	165	4-22	22	53.98	16	58.0	280
26"	550	480	75	644	165	870	806.4	722	20-35.1	4-1 1/4	50.8	300	254	8-18	30	53.98	16	58.0	338
28"	580	505	70	695	165	927	863.6	773	24-35.1	4-1 1/4	52.3	300	254	8-18	30	63.35	18	71.4	368
30"	580	530	70	744	167	984	914.4	832	24-35.1	4-1 1/4	54.1	300	254	8-18	30	63.35	18	71.4	428
32"	670	560	75	795	190	1061	977.9	872	24-41.1	4-1 1/2	57.2	300	254	8-18	30	70.00	20	79.0	505
36"	705	630	110	865	203	1168	1085.8	987	28-41.1	4-1 1/2	60.5	300	254	8-18	34	80.00	22	90.0	660
40"	780	670	135	965	216	1289	1200.2	1073	32-41.1	4-1 1/2	63.5	300	254	8-18	34	90.00	25	100.0	1070
42"	810	710	135	1030	251	1346	1257.3	1152	32-41.1	4-1 1/2	66.8	300	254	8-18	34	95.00	25	105.0	1275
44"	840	740	135	1065	251	1403	1314.4	1203	36-41.1	4-1 1/2	66.8	350	298	8-22	34	95.00	25	105.0	1400
48"	910	790	150	1160	276	1511	1422.4	1302	40-41.1	4-1 1/2	69.9	350	298	8-22	34	105.00	28	117.0	1600
54"	1030	940	150	1310	390	1683	1593.8	1476	36-47.8	8-1 3/4	76.2	415	356	8-33	40	120.00	32	134.0	3000
60"	1080	1040	180	1457	381	1854	1758.9	1638	44-47.8	8-1 3/4	79.5	415	356	8-33	40	140.00	36	156.0	3500
66"	1150	1132	200	1610	457	2032	1930.4	1802	44-47.8	8-1 3/4	85.8	475	406	8-40	50	140.00	36	156.0	4000
72"	1280	1270	280	1775	457	2197	2095.5	1893	52-47.8	8-1 3/4	88.9	560	483	12-40	55	160.00	40	178.0	5625

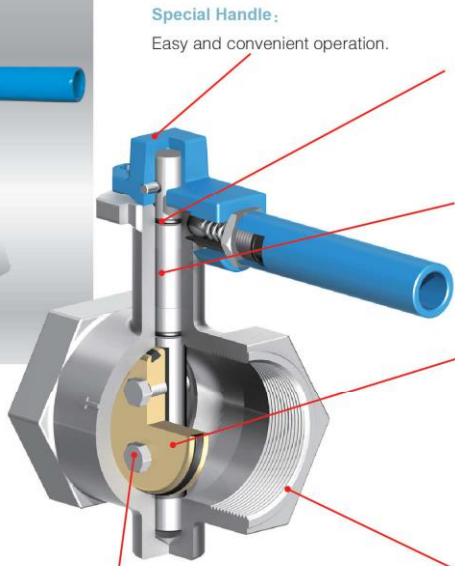
Overall & Connection Dimensions & Weight for Wafer & Lug Butterfly Valve of Series UD



PN1.0MPa (150PSI)

Size	A	B	C	D	L	H	D1	N-Ø	K	E	4-M	Ø2	G	n ₂ -M	n ₁ -Ø ₁	f	J	X	Weight(kg)	
DN750	30	660	560	167	744	66	726	914.4	24-35	300	254	4-11/4-7UNC-2B	63.35	984	24-11/4-7UNC-2B	8-18	28	71.35	18	480
DN900	36	720	656	203	864.7	118	841	1085.8	28-41.3	300	254	4-11/2-6UNC-2B	75	1168	28-11/2-6UNC-2B	8-18	34	84	20	728
DN1050	42	858	777	251	1030	150	999	1257.3	32-41.3	300	254	4-11/2-6UNC-2B	95	1346	32-11/2-6UNC-2B	8-18	35	105	25	976
DN1200	48	941	864	276	1160	150	1127	1422.4	40-41.3	350	298	4-11/2-6UNC-2B	105	1511	40-11/2-6UNC-2B	8-22	35	117	28	1374

WAFER BUTTERFLY VALVE



Special Handle:
Easy and convenient operation.

O-Ring:
Dual seal the stem.

Integral Stem Design:
Ensures wholeness and positive disc control.

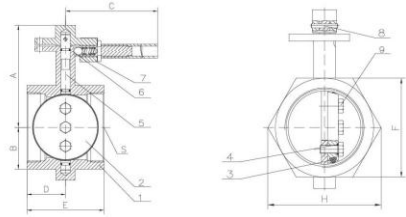
Disc:
Standard polished bronze disc with replaceable Buna N O-Ring. An optional Viton O-Ring material is also available. Both disc and stem O-Rings are easily replaced in the field.

Body:
Body uses spiral NPT to connect with the pipeline, to save installation space; body electroplated

Hexagonal Head Bolt:
The way the Axis connecting with plate to facilitate the replacement of ring.

Material of Main Parts

No.	Name	Material
1	Body	HT200 ASTM A126-84 CL B
2	Disc	ZCuZn40Pb2 ASTM B148-90 C95400
3	Disc O-Ring	NBR
4	O-Ring	NBR
5	Stem	Y1Cr13 416
6	Stem O-Ring	NBR
7	Handle Extension	Q235-A Gr.33
8	Cone Pin	35 035
9	Hexagonal head bolt	Y1Cr13 416



Overall & Connection Dimensions & Weight of Series SD Butterfly Valve

200 PSI(PN1.6Mpa)

Size		A	B	C	D	E	F	H	S	Weight(kg)
mm	inch									
DN50	2	105.41	57.15	203.2	53.98	107.95	76.2	87.9	2"-111/2NPT	4.8
DN80	3	152.91	69.85	203.2	61.72	123.7	103.12	119.1	3"-8NPT	7.1
DN105	4	161.04	93.73	203.2	65.02	130.05	134.87	155.7	4"-8NPT	10.1
DN150	6	231.24	120.65	330.2	88.9	177.8	196.85	277.3	6"-8NPT	21.8

Flat Stem End:

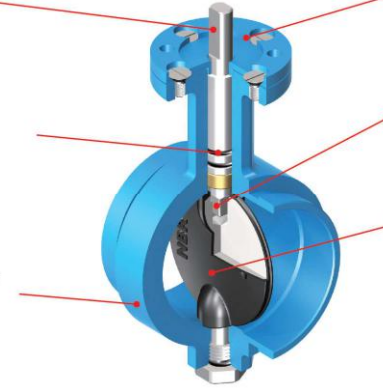
Convenient to connect with various actuators, deliver bigger torque.

O-Ring:

Dual seal the stem.

Body:

Available in Grooved End with EPOXY coating inside and outside of body.



Driving Device Flange:

Available with handles, gear operators.

Two-Piece Stem Square Driver:

No-space connection applies to any poor conditions.

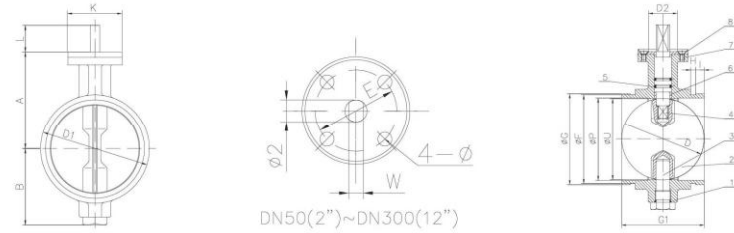
Disc Coating:

Disc is encapsulated with various synthetic elastomers to accommodate varied service requirements.



Material of Main Parts

No.	Name	Code Name	Material	Quantity
1	Body		ASTM A536 65-45-12	1
2	Disc		ASTM A536 65-45-12+Rubber	1
3	Stem (Lower)		1Cr17Ni2 431	1
4	Stem(Upper)		1Cr17Ni2 431	1
5	O-Ring	GB819-85	NBR	3
6	Bushing		F4 PTFE	1
7	Screw		Zn-PLATED	4
8	Cover		Ni-PLATED	1



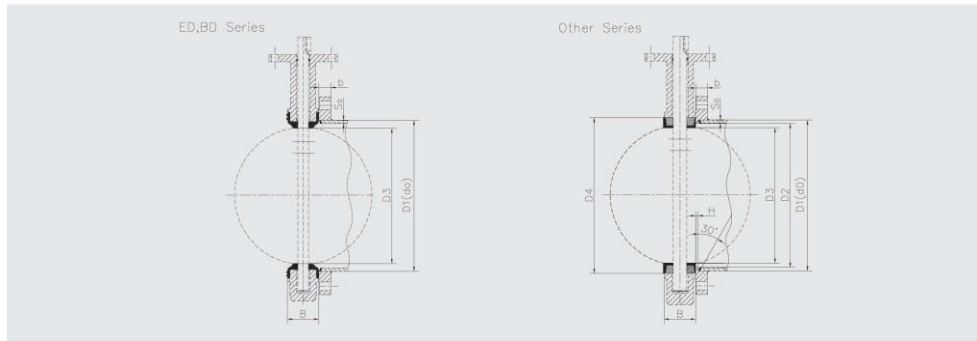
Overall & Connection Dimensions & Weight of Series GD Butterfly Valve

175 PSI(PN1.6Mpa)

Size		A	B	D	D1	D2	L	H	E	F	G	G1	I	P	w	U	K	ø1	ø2	Weight (kg)
mm	inch																			
50	2	98.3	61	51.1	78	35	32	9.53	50	57.15	60.33	81.5	15.88	50.8	9.52	49.5	77	7	12.7	2.6
65	2.5	111.25	65	63.2	92	35	32	9.53	50	69.09	73.03	97.8	15.88	63.5	9.52	61.7	77	7	12.7	3.1
80	3	117.35	75	76	105	35	32	9.53	50	84.94	88.9	97.8	15.88	76.2	9.52	74.5	77	7	12.7	3.5
100	4	136.65	90	99.5	132	55	32	9.53	70	110.08	114.3	115.8	15.88	101.6	11.1	98	92	10	15.88	5.4
150	6	161.8	130	150.3	185	55	45	9.53	70	163.96	168.28	148.8	15.88	152.4	17.53	148.8	92	10	25.4	10.5
200	8	196.9	165	200.6	239	70	45	11.13	102	214.4	219.08	133.6	19.05	203.2	20.02	198.8	125	12	28.58	16.7
250	10	228.6	215	250.7	295	70	45	12.7	102	268.28	273.05	159.8	19.05	254	24	248.8	125	12	34.93	27.4
300	12	266.7	258	301	350	70	45	12.7	102	318.29	323.85	165.1	19.05	304.8	26.92	299.1	125	12	38.1	37.2

WAFER BUTTERFLY VALVE

Tubing Dimension

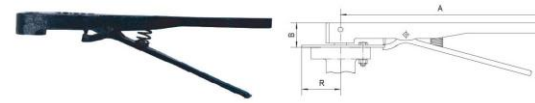


Size	(mm)		DN																					
	(inch)	DN	40	50	65	80	100	125	150	200	250	300	350	400	450	500	600	700	750	800	900	1000	1050	1200
Outer Diameter of Pipe	d ₀		46	57	73	89	108	133	159	219	273	325	377	426	478	529	630	720	770	820	920	1020	1070	1224
Inner Diameter of Flange	D1		48	59	75	91	110	135	161	221	275	327	379	429	481	532	633	723	773	823	923	1023	1073	1228
Diameter of Projecting Hole of Flange	D2		40	50	65	80	100	125	150	208	255	308	340	405	455	505	605	705	750	810	900	1000	1050	1200
Thickness of Projecting Part of Flange	H*		4	4	4	4	4	4	4	5	6	6	7	7	8	8	8	9	9	9	9	9	10	10
Flange Thickness	b*		22	22	24	24	26	28	28	30	32	32	34	38	42	48	50	52	54	54	56	58	60	64
Chord Dimension of Protruding Part of Disc	D3		22	32	46	64	90	111	145	192	242	292	322	380	428	473	572	675	725.5	770	840	940	999	1126
Outer Diameter of Seat	D4		62	76	89	104	135	159	188.4	238.2	292.4	344	375.4	439.2	489	534	653.7	744	797	850	947	1053	1115	1250
Face to Face Dimension of the Valve	B		33	42	44.7	45.2	52.1	54.4	55.8	60.6	65.6	77	76.5	86.5	105.6	131.8	152	163	167	188	203	216	251	276
Min. Thickness of Pipe	S ₀ *		3	3.5	4	4	4	4	4.5	6	8	8	9	9	9	9	9	9	10	10	10	10	10	12

Note: The dimensions with asterisks "*" are for reference only, which can be specified by customers.
The flange dimensions adopted by different countries are shown in Fig.2. and comparison table.

Actuators

Lever overall dimension and weight



Size mm(inch)	A	B	R	Weight (kg)
50(2")-150(6")	266.7	32	52	0.9
200(8")-300(12")	359	50	75.2	2.3

European lever overall dimension and weight



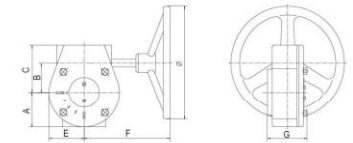
Size mm(inch)	L1	L2	H	Weight (kg)
50(2")-80(3")	47	170	29	0.35
100 (4") -150 (6")	47	215	33	0.67

Malleable lever overall dimension and weight



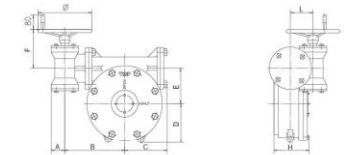
Size mm(inch)	L1	L2	H	Weight (kg)
40(1.5")-65(2.5")	47	205	40	0.62
80(3")	47	265	40	0.62
100 (4") -150 (6")	47	265	40	0.86
200 (8") -250 (10")	75	315	56	1.64
300 (12")	75	405	60	2.07

Worm gear overall dimension and weight



Type	Size mm (inch)	A	B	C	E	F	G	ø	Weight (kg)
3DB-15	25(1)-150(6)	52	45	74	52	153	75	150	5.2
3DB-50	200(8)-250(10)	75	62.75	101	75	250	86	300	13
3DB-120	300(12)-350(14)	81	80	118	81	227	83	300	15

Secondary worm gear overall dimension and weight



Type	Size mm (inch)		A	B	C	D	E	F	H	L	ø	Weight (kg)
	PN1.0MPa	PN1.6/2.0MPa										
3D-30/250	400(16")-500(20")	400(16")-450(18")	56.5	178.5	121	115	104	174	125.5	66	300	56.9
3D-30/400	600(24")	500(20")	56.5	197.5	142	144	130	174	145.5	66	300	72.37
3D-60/800	700(28")-800(32")	600(24")	67	244	183	189	162	165	157	88	400	124
3D-120/1500	900(36")-1000(40")	-----	76	270	215	220	196	215	235	126	300	158
3D-120/2500	1050(42")-1200(48")	-----	76	418	265	265	240	215	315	126	435	370



DOUBLE FLANGED BUTTERFLY VALVE

Technical Specification

Type	Eccentric Flanged Butterfly Valve			Double Flanged Concentric Butterfly Valve			AWWA C504 Butterfly Valve
Nominal Diameter (DN/Inch)	600-3000	100-2600	100-1200	----	50-2400	----	3"-72"
Nominal Pressure (PN/PSI)	0.6	1.0	1.6	----	1.0	----	150PSI
Test Pressure	Sealing	0.66	1.1	1.76	----	1.1	165PSI
	Shell	0.9	1.5	2.4	----	1.5	225PSI
Working Temperature (°C)	-10 ~ 80			-20 ~ 150			-10 ~ 80
Suitable Media	Fresh water, Sewage, Sea water, Air, Vapour, Food, Medicine, Oils, Acids, Alkalis, Salts etc.						

Design Standard

- Series D, DE, DL according to EN593
- Series DA according to AWWA C504.

End Flange Connection:

- Series D, DE, DL according to EN1092
- Series DA according to ANSI B16.1

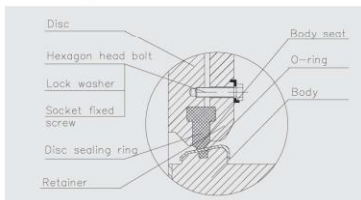
Face to Face:

- Series D, DE, DL according to EN558-1
- Series DA according to ANSI B16.10.

Upper Flange Connection:

- All series can meet ISO 5211

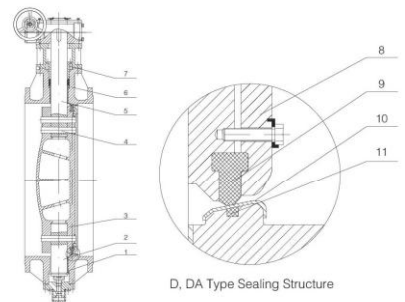
Sealing Structure and Features



- "∩" type stainless steel ring inlaid in valve body, can rust proof permanently, and also prevent the vibration caused by unstable water flow speed and the valve failure caused by fastener loosen and fallen down, improve adaptability of bad condition.
- "∩" type stainless steel ring underside adopt ring belt, O type sealing saved material and simple process, greatly reduce product cost.
- "T" type disc rubber as main seal ring ,reaches bi-direction seal, prevent from force falling in on-off operation.
- Available with lock washer and set screw, ensure disc pressure ring in right position.

Main parts materials of series DC

No.	Name	Material
1	Bushing	ZCuZn38Mn2Pb2, F4 backing Steel
2	Bottom shaft	304 416 420 431
3	Disc	QT450-10 A536 65-45-12
4	Taper pin	304 416 420 431
5	Top shaft	304 416 420 431
6	Body	HT200 A126 ClassB QT450-10 A536 65-45-12
7	Packing	NBR EPDM
8	Retainer	*QT450-10 A536 65-45-12 Q235-A Gr33
9	Disc sealing ring	NBR EPDM
10	Body steel ring	316
11	Sealing ring	NBR EPDM



D, DA Type Sealing Structure

A: Body

Made of high strength materials, little deformation, adapt to bad working conditions.

B: Body Sealing Ring

Stainless steel sealing ring, integral rolling on body, high precision, wear-resistant, long service life.

C: Disc Sealing Ring:

T type sealing rubber ring, integrate moulded form, high precision, reach bi-direction seal.

D: Disc:

Bridge structure design, high strength, little deformation, huge flow area.

E: Taper pin

High precision, connect shaft with disc efficiently.

F: Pin-Sealing Ring

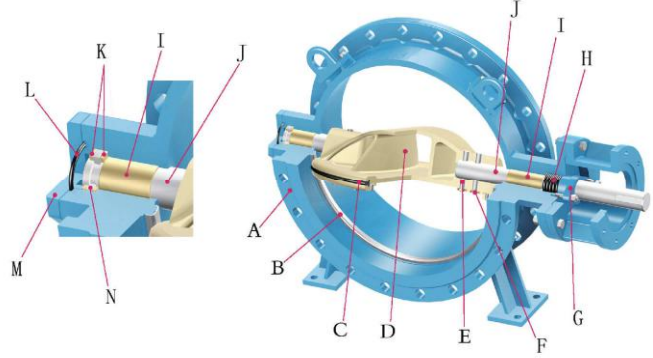
Fix the taper pin reliably, prevent falling.

G: Packing Gland

Reach upper shaft fixed position, and fix the seal ring.

H: O-Ring

Multiplex O-Rings can prevent stem end leakage.



I: Bushing

Made of lubricant and small friction coefficient material, support shaft and reduce rotation torque.

J: Shaft

High strength stainless steel shaft can deliver torque effectively.

K: Wearing Washer

Prevent the splint ring and shaft shoulder from wearing, reduce rotation torque, and assure the shaft in right position.

L: O-Ring

Prevent end from leakage efficiently.

M: Bottom Cover

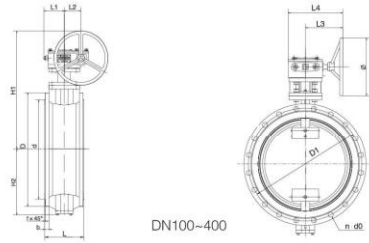
Through supporting splint ring, prevent disc from falling, and assure the sealing performance.

N: Splint Ring

Assure the shaft in right position.

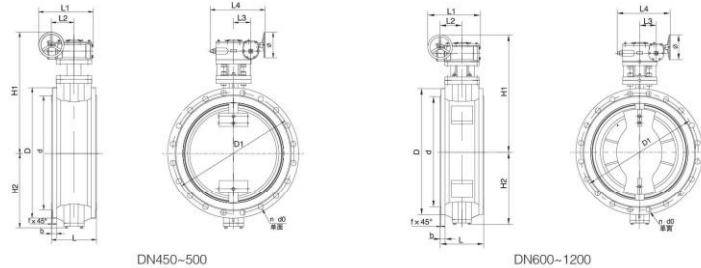
DOUBLE FLANGED BUTTERFLY VALVE

Overall Dimensions & Weights of Series DC Manual Butterfly Valve
Face to Face Series 13



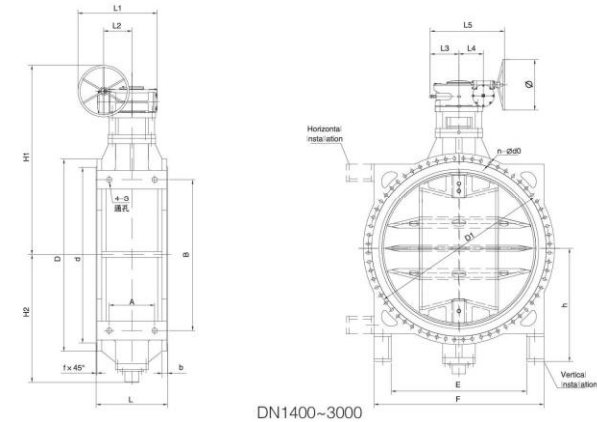
PN1.0 MPa (Unit: mm, kg)

DN	Gear Operator	L	D	D1	d	n	d0	b	f	H1	H2	L1	L2	L3	L4	∅	Weight
100	XJ24	127	220	180	156	8	19	19	3	310	109	52	45	158	210	150	19
150	XJ24	140	285	240	211	8	23	19	3	440	143	52	45	158	210	150	37
200	XJ30	152	340	295	266	8	23	20	3	510	182	77	63	238	315	300	51
250	XJ30	165	395	350	319	12	23	22	3	565	219	77	63	238	315	300	68
300	4022	178	445	400	370	12	23	24.5	4	630	244	95	72	167	242	300	93
350	4023	190	505	460	429	16	23	24.5	4	715	283	110	91	188	275	400	122
400	4023	216	565	515	480	16	28	24.5	4	750	312	110	91	188	275	400	152



PN 1.0 MPa (Unit: mm, kg)

DN	Gear Operator	L	D	D1	d	n	d0	b	f	H1	H2	L1	L2	L3	L4	∅	Weight
450	4024	222	615	565	530	20	28	25.5	4	820	344	473	147	109	420	400	182
500	4024	229	670	620	582	20	28	26.5	4	845	381	473	147	109	420	400	230
600	4025	267	780	725	682	20	31	30	5	950	451	533	179	138	476	400	388
700	4025	292	895	840	794	24	31	32.5	5	1010	526	533	179	138	476	400	480
800	4026	318	1015	950	901	24	34	35	5	1140	581	655	217	170	577	500	661
900	4026	330	1115	1050	1001	28	34	37.5	5	1197	643	655	217	170	577	500	813
1000	4026	410	1230	1160	1112	28	37	40	5	1277	722	655	217	170	577	500	1018
1200	4027	470	1455	1380	1328	32	40	45	5	1511	840	748	262	202	664	500	1501



DN1400-3000

Overall Dimensions & Weights of Series DC Manual Butterfly Valve
Face to Face Series 13

PN1.0/0.6 MPa (Unit: mm, kg)

Pressure	DN	Gear Operator	D	D1	d	b	f	n-d0	L	H1	H2	L1	L2	L3	L4	L5	∅	A	4-S	B	E	F	h	Weight
PN10	1400	4028	1675	1590	1530	46	5	36-43	530	1750	1150	884	334	305	238	790	500	310	33	1500	1360	1590	960	2895
	1600	4028	1915	1820	1750	49	5	40-49	600	1870	1305	884	334	305	238	790	500	340	33	1600	1460	1700	1050	3655
	1800	4028.5	2115	2020	1950	52	5	44-49	670	2125	1425	977	357.5	323	281	855	600	450	36	1900	1740	1990	1200	5210
	2000	4029	2325	2230	2150	55	5	48-49	760	2280	1580	1059	397.5	345	307.5	903	600	480	36	2000	1850	2100	1323	6721
	2200	4029.5	2550	2440	2370	58	6	52-56	580	2520	1710	1222	436	437.5	365.5	1075	800	400	36	2030	1830	2150	1410	7658
	2400	40210	2760	2650	2570	62	6	56-56	750	2760	1880	1303	476	480	410.5	1191	800	490	45	2310	2120	2460	1470	10350
PN6	2600	40211	2960	2850	2780	66	6	60-56	900	3120	2010	1744	605	612	521	2024	1000	650	45	2400	2210	2540	1650	13708
	1400	4027	1630	1560	1510	38	5	36-37	530	1695	1150	748	262	259	202	664	500	310	33	1500	1360	1590	960	2623
	1600	4028	1830	1760	1710	40	5	40-37	600	1870	1305	884	334	305	238	790	500	340	33	1600	1460	1700	1050	3559
	1800	4028	2045	1970	1918	42	5	44-40	670	2015	1425	884	334	305	238	790	500	450	36	1860	1700	1960	1180	4615
	2000	4028.5	2265	2180	2125	45	5	48-43	760	2235	1580	977	357.5	323	281	855	600	480	36	1960	1810	2060	1303	6162
	2200	4029	2475	2390	2335	48	6	52-43	580	2380	1710	1059	397.5	345	307.5	903	600	400	36	1970	1770	2090	1380	6735
	2400	4029.5	2685	2600	2545	52	6	56-43	750	2720	1880	1222	436	437.5	365.5	1075	800	490	45	2310	2120	2460	1470	9586
2600	4029.5	2905	2810	2750	54	6	60-49	900	3080	2010	1222	436	437.5	365.5	1075	800	650	45	2400	2210	2540	1650	12387	
2800	40210	3115	3020	2960	56	6	64-49	1000	3035	2050	1303	476	480	410.5	1191	800	860	45	2540	2300	2700	1760	14238	
3000	40211	3315	3220	3160	60	6	68-49	1000	-	2300	1744	605	612	521	2024	1000	860	45	2650	2520	2920	1840	-	



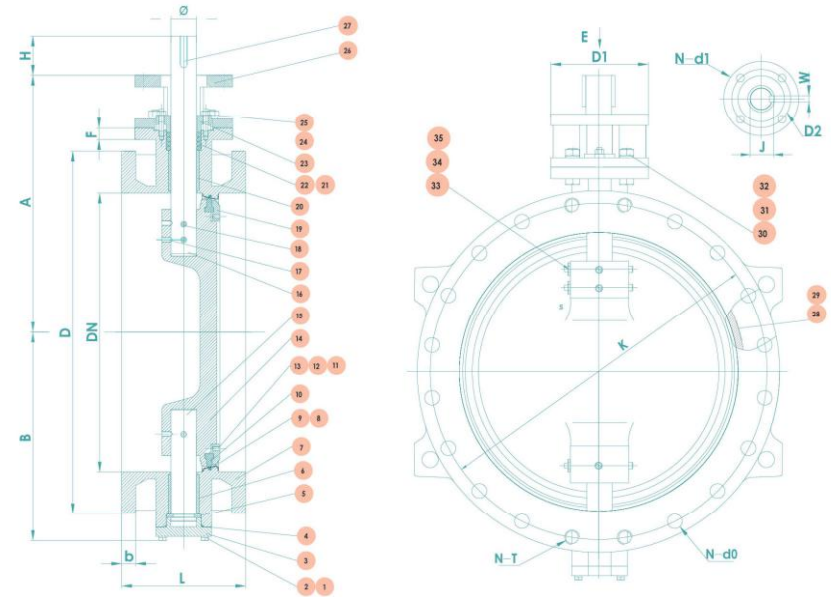
DOUBLE FLANGED BUTTERFLY VALVE

Overall Dimensions & Weights of Series DA
AWWA C504 Manual
Butterfly Valve

Main parts material

NO.	NAME	QTY	MATERIAL	NOTE	NO.	NAME	QTY	MATERIAL
1	Spring Gasket	8	304		19	Pressure Ring	1	304
2	Hexagon Bolt	8	304		20	Upper Bushing	1	316+TEFLON
3	Bottom Cover	1	ASTM A536		21	Packing Ring	1	304
4	Bottom Cover Seal	1	EPDM	NBR	22	O-ring	4	EPDM(NBR)
5	Bisect Ring	1	304		23	Packing Gland	1	ASTM A536
6	Lower Bushing	1	316+TEFLON		24	Hexagon Nut	2	304
7	Body	1	ASTM A536		25	Double End Studs	2	304
8	Body Seal	1	EPDM	NBR	26	Connection Support	1	ASTM A536
9	Body Sealing Steel Ring	1	316L		27	General Flat Key	2	45
10	Disc Seal	1	EPDM	NBR	28	Label	1	H62
11	Hexagon Bolt	40	304		29	Label Rivet	4	304
12	External Tab Gasket	1	304		30	Hexagon Bolt	8	304
13	Internal Hexagon Flat End Tightening Screw	20	304		31	Hexagon Nut	8	304
14	Disc	1	ASTM A536		32	Spring Gasket	8	304
15	Lower Shaft	1	SS304		33	Taper Pin Gasket	3	304
16	Upper Shaft	1	SS304		34	Hexagon Nut	3	304
17	Taper End Screw	3	SS304		35	Spring Gasket	3	304
18	Taper Pin	3	304					

C504 American standard soft sealing eccentric Butterfly Valve



Overall & Connection Dimensions & Weight for Wafer Butterfly Valve

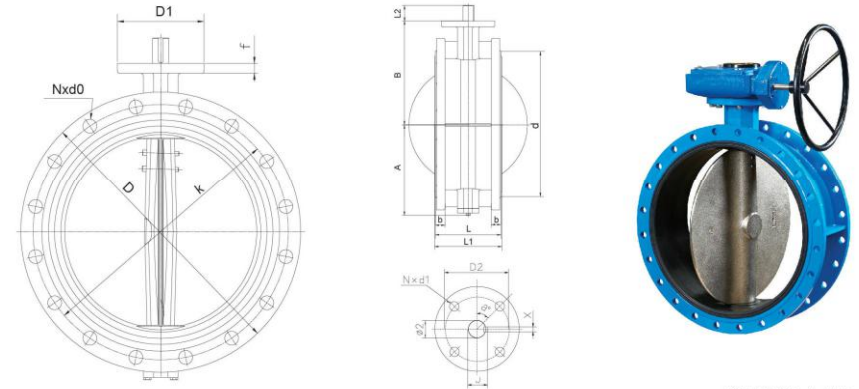
CWP=150 PSI

SIZE	DN	A	B	H	L	b	D	K	N-d0	N-T	D1	D2	N-d1	F	Ø	W	J	Weight(Kg)
3"	80	223	152	64	127	19.1	191	152.4	4-19	----	90	70	4-10	20	12.7	3	13.9	14.3
4"	100	223	152	64	127	23.9	229	190.5	8-19	----	90	70	4-10	20	15.9	5	17.9	16.7
6"	150	283	178	64	127	25.4	279	241.3	4-22.4	----	125	102	4-12	20	25.4	8	28.4	27.2
8"	200	308	203	64	152	28.5	343	298.4	8-22.4	----	125	102	4-12	22	28.6	8	31.6	44.4
10"	250	380	254	95	203	30.3	406	361.9	12-25.4	----	150	125	4-14	22	34.9	10	37.9	72.1
12"	300	433	281	95	203	31.8	483	431.8	12-25.4	----	175	140	4-18	24	38.1	10	41.1	105.5
14"	350	482	343	108	203	35.1	533	476.2	12-28.4	----	175	140	4-18	24	44.5	12	47.5	141.3
16"	400	512	371	108	203	36.6	597	539.8	12-28.4	4-1	210	165	4-22	24	50.8	14	54.3	186.1
18"	450	537	394	133	203	39.7	635	577.8	12-31.8	4-1 1/8	210	165	4-22	26	54.0	16	58.0	249.1
20"	500	585	445	133	203	43.0	699	635.0	16-31.8	4-1 1/8	210	165	4-22	26	60.3	18	64.3	301.6
24"	600	676	521	152	203	47.8	813	749.3	16-35.0	4-1 1/4	300	254	8-18	26	69.9	20	78.9	465.3
30"	800	832	695	140	305	53.9	984	914.4	24-35.0	4-1 1/4	300	254	8-18	30	88.9	25	98.9	839.5
36"	900	890	749	137	305	60.5	1168	1085.9	28-41.1	4-1 1/2	300	254	8-18	34	102.0	28	114.0	1212.5
42"	1000	1003	895	155	305	66.6	1346	1257.3	32-41.1	4-1 1/2	300	254	8-18	34	114.0	32	128.0	1973
48"	1200	1178	998	232	381	69.9	1511	1422.4	40-41.1	4-1 1/2	350	298	8-22	40	130.0	32	144.0	3152
54"	1400	1291	1124	232	381	76.2	1683	1593.9	36-50.8	8-1 3/4	415	356	8-33	40	146.0	36	162.0	4173
60"	1500	1391	1226	232	381	79.3	1854	1759.0	44-50.8	8-1 3/4	475	406	8-39	40	159.0	40	177.0	5940
72"	1800	1624	1499	273	457	88.9	2197	2095.5	52-50.8	8-1 3/4	560	483	12-39	55	191.0	45	211.0	7462

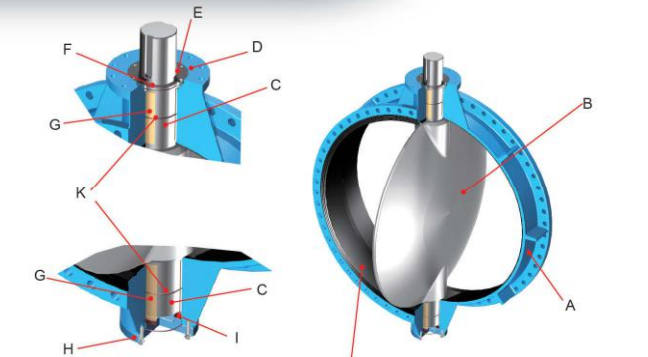


DOUBLE FLANGED BUTTERFLY VALVE

Overall Dimensions & Weights of Series DL Flanged Butterfly Valve



- A: Body**
Short in structure, light in weight, high strength, apply to wafer (small diameter) and flange connection.
- B: Disc**
High strength disc with precise machining, assure bi-direction pressure bearing and no leakage.
- C: Shaft**
High strength stainless steel shaft can deliver torque effectively.
- D: Upper Flange**
Available in actuators with various connection standards.
- E: Packing Gland**
Through pressing the packing gland, can prevent stem end from leakage.
- F: Sealing Ring**
The secondary shaft seal prevents from impurities and protects the shaft.
- G: Bushing**
Made of lubricant and small friction coefficient material, support shaft and reduce rotation torque.



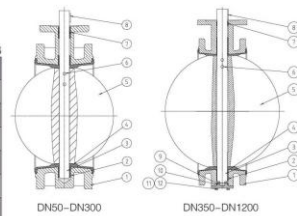
- H: Bottom Cover**
Support disc by wearing washer and shaft, prevent falling and assure sealing performance.
- I: Wearing Washer**
Prevent the shaft end from wearing, reduce rotation torque, and assure the disc in right position.
- J: Seat Sealing Ring**
High quality rubber ring, fixed on body, assures no leakage. No more washers when valve connects with flange.
- K: O-Ring**
Applied as secondary seal, prevent shaft end leakage.

PN1.0 MPa (Unit: mm, kg)

DN	A	B	b	f	D	K	d	F	N-d0	L	L1	D1	D2	N-d1	a°	J	X	L2	ø2	Weight
50	83	120	19	3	165	125	99	13	4-19	108	111	65	50	4-7	45	13.8	3	32	12.6	7.6
65	93	130	19	3	185	145	118	13	4-19	112	115	65	50	4-7	45	13.8	3	32	12.6	9.7
80	100	145	19	3	200	160	132	13	8-19	114	117	65	50	4-7	45	13.8	3	32	12.6	10.6
100	114	155	19	3	220	180	156	13	8-19	127	130	90	70	4-10	45	17.77	5	32	15.77	13.8
125	125	170	19	3	250	210	184	13	8-19	140	143	90	70	4-10	45	20.92	5	32	18.92	18.2
150	143	190	19	3	285	240	211	13	8-23	140	143	90	70	4-10	45	20.92	5	32	18.92	21.7
200	170	205	20	3	340	295	266	13	8-23	152	155	125	102	4-12	45	24.1	5	45	22.1	31.8
250	198	235	22	3	395	350	319	13	12-23	165	168	125	102	4-12	45	31.45	8	45	28.45	44.7
300	223	280	24.5	4	445	400	370	20	12-23	178	182	125	102	4-12	45	34.6	8	45	31.6	57.9
350	270	310	24.5	4	505	460	429	20	16-23	190	194	150	125	4-14	45	34.6	8	45	31.6	81.6
400	300	340	24.5	4	565	515	480	20	16-28	216	221	175	140	4-18	45	36.15	10	51	33.15	106
450	340	375	25.5	4	615	565	530	20	20-28	222	227	175	140	4-18	45	40.95	10	51	38	147
500	355	430	26.5	4	670	620	582	22	20-28	229	234	175	140	4-18	45	44.12	10	57	41.15	165
600	410	500	30	5	780	725	682	22	20-31	267	272	210	165	4-22	45	51.62	16	70	50.65	235
700	478	560	32.5	5	895	840	794	30	24-31	292	299	300	254	8-18	22.5	71.35	18	66	63.35	238
800	529	620	35	5	1015	950	901	30	24-34	318	325	300	254	8-18	22.5	71.35	18	66	63.35	475
900	584	665	37.5	5	1115	1050	1001	34	28-34	330	337	300	254	8-18	22.5	84	20	118	75	595
1000	657	735	40	5	1230	1160	1112	34	28-37	410	417	300	254	8-18	22.5	95	22	142	85	794
1200	799	917	45	5	1455	1380	1328	34	32-40	470	478	350	298	8-22	22.5	117	28	150	105	1290
1400	919	1040	46	5	1675	1590	1530	40	36-44	530	538	415	356	8-33	22.5	134	32	200	120	2130
1500	965	1050	47.5	5	1785	1700	1630	40	36-44	570	580	415	356	8-32	22.5	156	36	200	140	3020
1600	1045	1150	49	5	1915	1820	1700	50	40-50	600	610	415	356	8-32	22.5	156	36	200	140	3560
1800	1280	1290	52	5	2115	2020	1914	55	44-50	670	682	475	406	8-40	22.5	178	40	280	160	4620
2000	1350	1323	55	5	2325	2230	2130	55	48-50	760	772	475	406	8-40	22.5	178	40	280	160	6160
2200	1430	1500	60	5	2555	2440	2320	55	52-56	636	648	560	483	12-40	15	200	45	300	180	6730
2400	1523	1560	68	5	2760	2650	2530	55	56-56	750	762	686	603	20-40	9	242	50	400	220	9586

Main Parts Materials of Series DL Flange Butterfly Valve

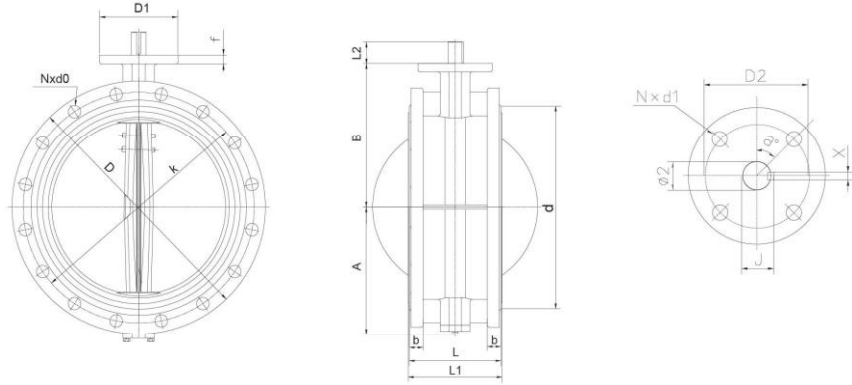
No.	Part	Material	No.	Part	Material
1	Body	HT200, A126 ClassB QT450-10, A536 65-45-12 WCB	7	O-Ring	NBR EPDM
2	Bushing	ZCuZn38Mn2Pb2, Bronze F4 Backing Steel	8	Key	45 1045
3	Shaft	416 420 431 17-4PH	9	End Plate	QT450-10 Q235-A Gr33
4	Seat	NBR EPDM Viton	10	O-Ring	NBR EPDM
5	Disc	DI ALB CF8 CF8M 1.4529, 1.4669	11	Hex Bolt	Q235-A Gr.33
6	Taper Pin	416 420 431 17-4PH	12	Spring Gasket	Spring Steel



Note: Materials indicated in above table are for common usage, please give clear declaration in your contract if there is special need.

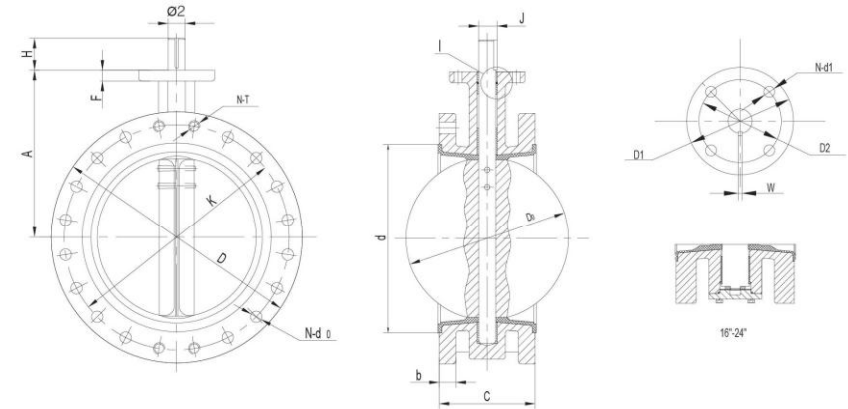
DOUBLE FLANGED BUTTERFLY VALVE

Overall Dimensions & Weights of Series DL Flanged Butterfly Valve



PN1.6 MPa (Unit: mm, kg)

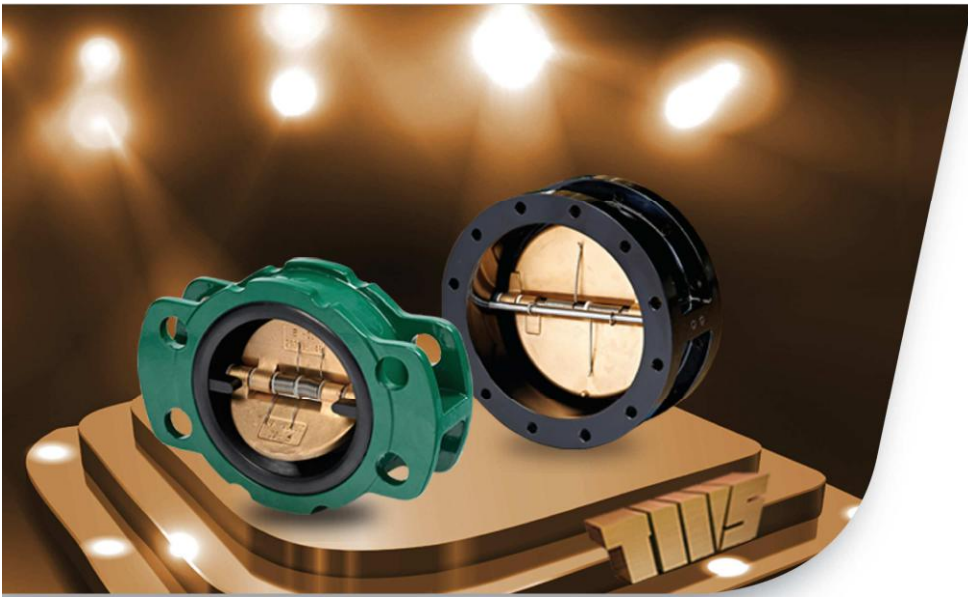
DN	A	B	b	f	D	K	d	F	N-d0	L	L1	D1	D2	Nxd1	Ø²	J	X	L2	Ø2	Weight
50	83	120	19	3	165	125	99	13	4-19	108	111	65	50	4-7	45	13.8	3	32	12.6	7.6
65	93	130	19	3	185	145	118	13	4-19	112	115	65	50	4-7	45	13.8	3	32	12.6	9.7
80	100	145	19	3	200	160	132	13	8-19	114	117	65	50	4-7	45	13.8	3	32	12.6	10.6
100	114	155	19	3	220	180	156	13	8-19	127	130	90	70	4-10	45	17.77	5	32	15.77	13.8
125	125	170	19	3	250	210	184	13	8-19	140	143	90	70	4-10	45	20.92	5	32	18.92	18.2
150	143	190	19	3	285	240	211	13	8-23	140	143	90	70	4-10	45	20.92	5	32	18.92	21.7
200	170	205	20	3	340	295	266	13	12-23	152	155	125	102	4-12	45	24.1	5	45	22.1	31.8
250	198	235	22	3	405	355	319	13	12-28	165	168	125	102	4-12	45	31.45	8	45	28.45	44.7
300	223	280	24.5	4	460	410	370	20	12-28	178	182	125	102	4-12	45	34.6	8	45	31.6	59
350	270	310	26.5	4	520	470	429	20	16-28	190	194	150	125	4-14	45	36.15	10	45	33.15	86
400	300	340	28	4	580	525	480	20	16-31	216	221	175	140	4-18	45	40.95	10	51	37.95	119
450	340	375	30	4	640	585	530	20	20-31	222	227	175	140	4-18	45	45.86	12	51	42.86	165
500	355	430	31.5	4	715	650	582	22	20-34	229	234	210	165	4-22	45	49.22	14	57	45.72	185
600	410	500	36	5	840	770	682	22	20-37	267	272	300	254	8-18	22.5	57.98	15	70	53.98	263
700	478	560	39.5	5	910	840	794	30	24-37	292	299	300	254	8-18	22.5	71.35	18	66	63.35	361
800	529	620	43	5	1025	950	901	30	24-41	318	325	350	298	8-22	22.5	79	20	66	70	484
900	584	685	46.5	5	1125	1050	1001	34	28-41	330	337	350	298	8-22	22.5	90	22	118	80	598
1000	657	735	50	5	1255	1170	1112	34	28-44	410	417	350	298	8-22	22.5	100	25	142	90	824
1200	799	917	57	5	1485	1380	1328	34	32-50	470	478	415	356	8-33	22.5	117	28	150	105	1223
1400	919	1040	60	5	1685	1590	1530	40	36-50	530	538	415	356	8-33	22.5	134	32	200	120	2386
1500	965	1050	62.5	5	1820	1710	1630	40	36-57	570	580	415	356	8-32	22.5	156	36	200	140	3475
1600	1045	1150	65	5	1930	1820	1700	50	40-57	600	610	415	365	8-32	22.5	156	36	200	140	4055
1800	1280	1290	70	5	2130	2020	1914	55	44-57	670	682	475	406	8-40	22.5	178	40	280	160	5570
2000	1350	1323	75	5	2345	2230	2130	55	48-62	760	772	475	406	8-40	22.5	178	40	280	160	7240



Overall & Connection Dimensions & Weight for AWWA Flanged Concentric Butterfly Valve

150PSI (Unit: mm, kg)

DN	A	H	D0	C	d	b	D	K	N-d0	N-T	D1	D2	N-d1	F	Ø2	W	J	Weight
80	159	32	78.80	127	120	19.1	191	152.4	4-19	-	90	70	4-10	20	12.7	3	13.9	12.6
100	178	32	104.0	127	144	23.9	229	190.5	8-19	-	90	70	4-10	20	15.9	5	17.9	18.7
150	203	40	155.7	127	197	25.4	279	241.3	8-22.4	-	90	70	4-10	20	25.4	8	28.4	24.1
200	242	51	202.41	152	252	28.5	343	298.4	8-22.4	-	125	102	4-12	22	28.6	8	31.6	31.8
250	274	76	250.42	203	305	30.3	406	361.9	12-25.4	-	125	102	4-12	22	34.9	10	37.9	50.7
300	313	76	301.50	203	350	31.8	483	431.8	12-25.4	-	125	102	4-12	24	38.1	10	41.1	74.8
350	356	76	333.32	203	415	35.1	533	476.2	12-28.4	-	125	102	4-12	24	44.5	12	47.5	94.8
400	382	76	389.61	203	460	36.6	597	539.8	12-28.4	4-1	175	140	4-18	24	50.8	14	54.3	127.5
450	420	89	440.51	203	510	39.7	635	577.8	12-31.8	4-1 1/8	175	140	4-18	26	54.0	16	58.0	161.1
500	459	89	491.64	203	560	43.0	699	635.0	16-31.8	4-1 1/8	210	165	4-22	26	60.3	18	64.3	225.2
600	572	89	592.50	203	660	47.8	813	749.3	16-35.0	4-1 1/4	210	165	4-20	26	69.9	20	74.4	278.3



WAFER BUTTERFLY CHECK VALVE

Characteristic of Product

- Small in size, light in weight, compact in structure, easy in maintenance.
- Two torsion springs are added to each of the pair valve plates, which close the plates quickly and automatically.
- The quick-close action prevents the medium from flowing back.
- Short face to face and good rigidity.
- Easy installation, it can be installed on both horizontal and vertical direction pipelines.
- This valve is tightly sealed, without leakage under the water pressure test.
- Safe and reliable in operation, high interference-resistance.

Technical Specifications

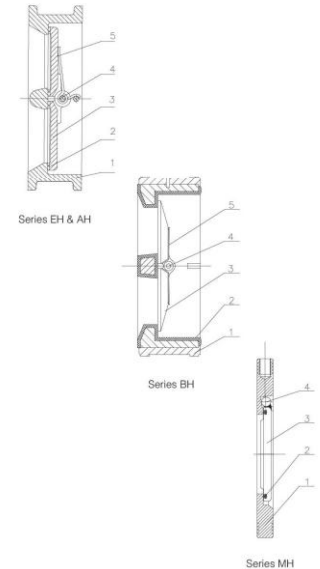
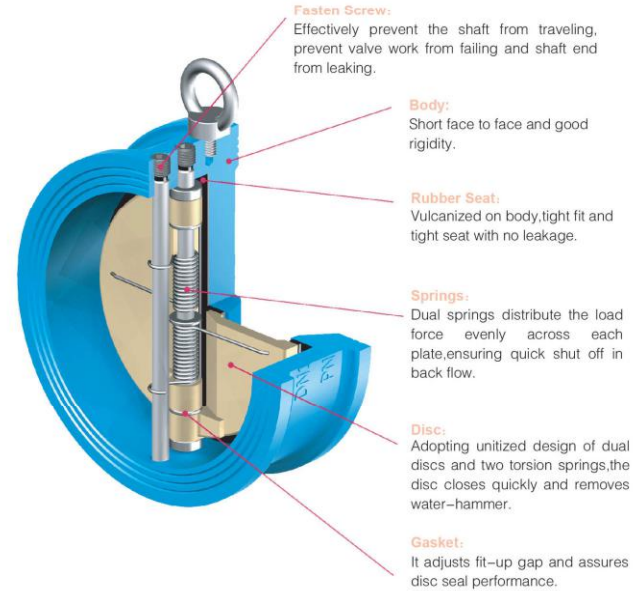
Series	EH	AH		BH		MH			
DN Nominal Diameter	"40~700(1.5''~28''")	"50~750(2''~30''")	"50~300(2''~12''")	"50~500(2''~20''")	"50~300(2''~12''")	"50~600(2''~24''")	50~400 (2''~16'')		
PN Nominal Pressure	1.0MPa	150PSI	200PSI	150PSI	200PSI	1.0MPa	1.6MPa	2.5MPa	
Testing Pressure	Shell	1.5MPa	225PSI	300PSI	225PSI	300PSI	1.5MPa	2.4MPa	3.75MPa
	Sealing	1.1MPa	165PSI	220PSI	165PSI	220PSI	1.1MPa	1.76MPa	2.75MPa
Working Temperature	-15→+150								
Suitable Media	Fresh water, Sewage, Sea water, Air, Vapour, Food, Medicine, Oils, Acids, Alkalis, Salts, etc.								

Flange Connection:

- Series EH, MH conform to EN1092;
- Series AH, BH conform to ANSI B16.1;

Face to Face:

- Series EH conform to EN558-1; Series AH conform to ANSI B16.10

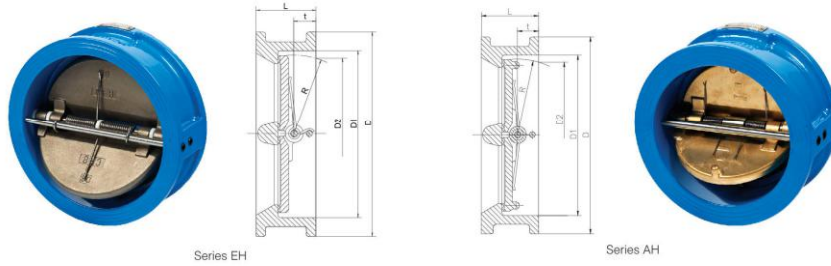


Materials of Main Parts

No.	Part	Material																	
		AH		EH		BH			MH										
1	Body	CI	DI	WCB	CF8	CF8M	C95400	CI	DI	WCB	CF8	CF8M	C95400	WCB	CF8	CF8M	C95400		
2	Seat	NBR EPDM VITON etc.					DI Covered Rubber					NBR EPDM VITON etc.							
3	Disc	DI		C95400		CF8		CF8M		DI		C95400		CF8		CF8M		C95400	
4	Stem	416/304/316					304/316					WCB					CF8	CF8M	C95400
5	Spring	316										-----							

WAFER BUTTERFLY CHECK VALVE

Overall Dimensions & Weights



Series EH

Size		D	D1	D2	L	R	t	Weight(kg)
(mm)	(inch)							
40	1.5"	92	65	43.3	43	28.8	19	1.5
50	2"	107	65	43.3	43	28.8	19	1.5
65	2 1/2"	127	80	60.2	46	36.1	20	2.4
80	3"	142	94	66.4	64	43.4	28	3.6
100	4"	162	117	90.8	64	52.8	27	5.7
125	5"	192	145	116.9	70	65.7	30	7.3
150	6"	218	170	144.6	76	78.6	31	9.0
200	8"	273	224	198.2	89	104.4	33	17
250	10"	328	265	233.7	114	127	50	26
300	12"	378	310	283.9	114	148.3	43	42
350	14"	438	360	332.9	127	172.4	45	55
400	16"	489	410	381.0	140	197.4	52	75
450	18"	539	450	419.9	152	217.8	58	101
500	20"	594	505	467.8	152	241	58	111
600	24"	690	624	572.6	178	295.4	73	172
700	28"	800	720	680	229	354	98	219

Series AH

Size		D	D1	R	L	t	D2	Weight(kg)
(mm)	(inch)							
DN50	2"	105(4.134)	65(2.559)	29.73(1.17)	54(2.12)	25(0.984)	32.18(1.26)	2.8
DN65	2.5"	124(4.882)	78(3.071)	36.14(1.423)	60(2.38)	29.3(1.154)	42.31(1.666)	3
DN80	3"	137(5.39)	94(3.701)	43.42(1.709)	67(2.62)	27.7(1.091)	66.87(2.633)	3.8
DN100	4"	175(6.89)	117(4.606)	55.66(2.191)	67(2.62)	26.7(1.051)	97.68(3.846)	5.5
DN125	5"	187(7.362)	145(5.709)	67.68(2.665)	83(3.25)	38.6(1.52)	111.19(4.378)	7.4
DN150	6"	222(8.74)	171(6.732)	78.64(3.096)	95(3.75)	46.3(1.823)	127.13(5.005)	10.9
DN200	8"	279(10.984)	222(8.740)	102.5(4.035)	127(5)	66(2.598)	161.8(6.370)	22.5
DN250	10"	340(13.386)	276(10.866)	126(4.961)	140(5.5)	70.7(2.783)	213.6(8.490)	36
DN300	12"	410(16.142)	327(12.874)	154(6.063)	181(7.12)	102(4.016)	237.9(9.366)	54
DN350	14"	451(17.756)	375(14.764)	179.9(7.083)	184(7.25)	89.2(3.512)	312.5(12.303)	80
DN400	16"	514(20.236)	416(16.378)	198.4(7.811)	191(7.5)	92.5(3.642)	351.0(13.819)	116
DN450	18"	549(21.614)	467(18.386)	226.2(8.906)	203(8)	96.2(3.787)	409.4(16.118)	138
DN500	20"	606(23.858)	514(20.236)	248.2(9.72)	213(8.374)	102.7(4.043)	451.9(17.791)	175
DN600	24"	718(28.268)	616(24.252)	297.4(11.709)	222(8.75)	107.3(4.224)	554.7(21.839)	239
DN750	30"	884(34.8)	772(30.39)	374(14.724)	305(12)	150(5.905)	685.2(26.976)	659

Body:

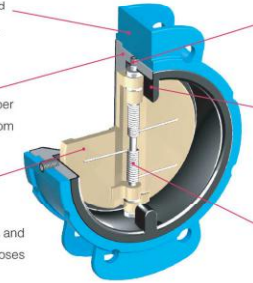
Conform to ASME B16.1 Standard flange pipeline connection dimensions.

Seat:

Maintains full rated pressure. Rubber lining prevents flow medium from contacting the body.

Disc:

Adopting unitized design of dual discs and two torsion springs, The disc closes quickly and removes water-hammer.



Fasten Screw:

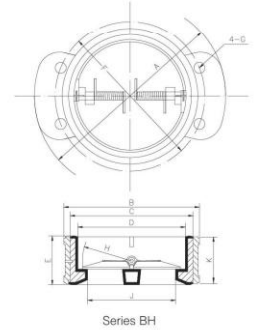
It is possible to regulate fitting clearance using washer and ensure the sealing of disc.

Stop Washer:

Made of the same material as the the valve liner (2" -12") or 316 stainless steel (14" -20").

Springs:

Dual springs distribute the load force evenly across each plate, ensuring quick shut off in back flow.



Series BH

(Unit: mm,kg)

Size		A	B	C	D	K	F	G	H	J	E	Weight (kg)
(mm)	(inch)											
50.00	2"	159.00	101.60	84.14	66.68	52.39	120.65	19.05	28.45	47.63	53.98	2.00
65.00	2.5"	178.00	120.65	98.43	79.38	52.39	139.70	19.05	36.51	58.74	53.98	2.90
80.00	3"	191.00	133.35	115.89	92.08	52.39	152.40	19.05	41.28	69.85	53.98	3.20
100.00	4"	235.00	171.45	142.88	117.48	61.91	190.50	19.05	53.98	87.31	63.50	6.40
125.00	5"	270.00	193.68	171.45	144.46	65.02	215.90	22.35	67.47	112.71	66.68	7.50
150.00	6"	305.00	222.25	200.03	171.45	77.79	241.30	22.35	80.17	141.29	79.38	10.70
200.00	8"	368.00	269.88	254.00	222.25	96.84	298.45	22.35	105.57	192.09	98.43	18.50
250.00	10"	429.00	336.55	307.98	276.23	100.01	361.95	25.40	130.18	230.19	101.60	24.00
300.00	12"	495.00	4.6.40	365.13	327.03	128.59	431.80	25.40	158.75	274.64	130.18	41.50
350.00	14"	572.00	447.68	396.88	358.78	177.80	476.25	28.45	171.45	306.39	180.98	63.30
400.00	16"	632.00	511.18	450.85	409.58	158.75	539.75	28.45	196.85	355.60	161.93	73.90
450.00	18"	641.00	546.10	508.00	460.37	180.97	577.85	31.75	222.25	406.14	184.15	114.70
500.00	20"	699.00	596.90	555.62	511.17	212.72	635.00	31.75	247.65	469.90	215.90	165.00

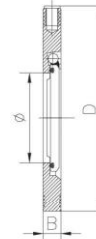
Series MH

PN1.6

Size	Ø	D	B	Weight (kg)
DN50	2"	106	19	1.12
DN65	2.5"	126	19	1.5
DN80	3"	141	19	1.88
DN100	4"	161	19	2.7
DN125	5"	191	19	3.8
DN150	6"	216.5	19	5.3
DN200	8"	271	28	9.4
DN250	10"	326	28	14.8
DN300	12"	376	38	26.3
DN350	14"	436	44	42.1
DN400	16"	486	51	59.3
DN450	18"	536	60	75.9
DN500	20"	591	60	99.7
DN600	24"	710	70	156.8

PN2.5

Size	Ø	D	B	Weight (kg)
DN50	2"	106	19	1.27
DN65	2.5"	126	19	1.9
DN80	3"	141	19	2.13
DN100	4"	172	19	3.1
DN125	5"	191	19	4.13
DN150	6"	215	19	5.7
DN200	8"	275	28	10.8
DN250	10"	332	32	17.4
DN300	12"	390	38	28.1
DN350	14"	440	44	46.8
DN400	16"	500	52	67.1
DN450	18"	542	62	90.8
DN500	20"	600	68	121.6
DN600	24"	710	80	186



Series MH

Min. Opening Pressure of Series AH, BH & EH

- The min.opening pressure of series AH,BH & EH is about 0.03 bar when installed horizontally.
- The min.opening is about 0.1 bar when installed vertically.
- The min.opening pressure of series MH is about 0.05 bar.

FLANGED STATIC BALANCING VALVE

Characteristic of Product

Static Balancing Valve series flanged static balancing valve is a key hydraulic balance product used for precise flow regulating of water pipelines system in HVAC application to ensure static hydraulic balance across whole water system. The series can ensure the actual flow of each terminal equipment and pipeline in line with the design flow in the phase of system initial commissioning by site commissioning with flow measuring computer. The series are widely used in main pipes, branch pipes and terminal equipment pipelines in HVAC water system, It also can be used in other application with the same function requirement.

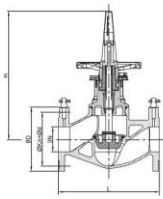


Material of Main Parts

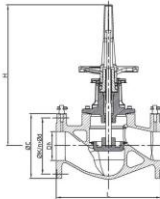
Description	Material
Body, Bonnet, Handwheel	Cl, DI, WCB
Stem	SS416/304
Disc	WCB+
Sealing Face	EPDM
Test Cocks	Brass
Stroke display	ABS Plastic

Specifications

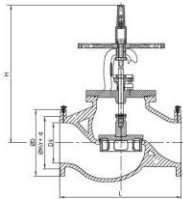
Nominal Pressure PN	Testing Pressure (MPa)		Suitable Media	Working Temperature °C
	Shell	Sealing		
1.6	2.4	1.76	Water	-10~120



DN65-DN80



DN100-DN200



DN250-DN350

Overall & Connection Dimensions & Weights

DN	L	H	D	K	n x d	Weight (kg)
65	290	364	185	145	4 x 19	19.5
80	310	394	200	160	8 x 19	24.3
100	350	472	220	180	8 x 19	34.5
125	400	510	250	210	8 x 19	54.3
150	480	546	285	240	8 x 23	70.7
200	600	676	340	295	12 x 23	146
250	730	830	405	355	12 x 28	265
300	850	930	460	410	12 x 28	360
350	980	934	520	470	16 x 28	535

GL41H FLANGED Y-STRAINER

Brief introduction

Flanged strainers are main parts of all kinds of pumps, valves in the pipeline. It is suitable for pipeline of nominal pressure ≤ 1.6MPa. Mainly used to filter dirt, rust and other debris in media such as steam, air, and water etc.

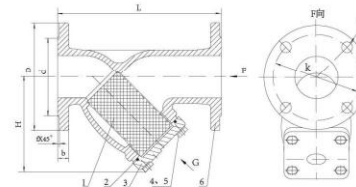
Materials of Main Parts

Parts	Material
Body	Cast iron
Bonnet	Cast iron
Filtering net	Stainless steel



Main Specifications

Nominal diameter DN (mm)	40-600
Nominal pressure (MPa)	1.6
Suitable temperature (°C)	≤ 200
Suitable media	Water, oil, gas, etc.
Main material	HT200



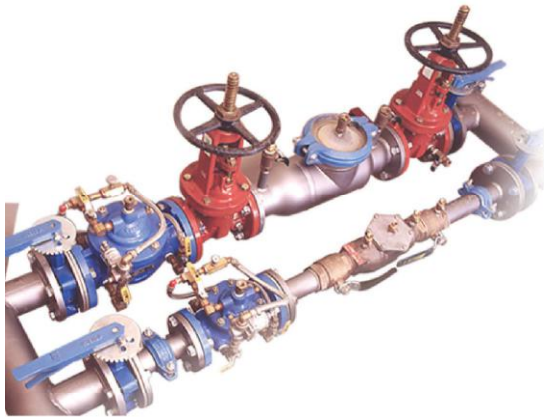
Overall & Connection Dimensions and Weights

DN	D	d	K	F1	L		b	f	n-d	H	Weight(kg)	
					GB	F1					GB	
40	150	84	110	200	200	18	3	4-18	125	9.5	9.5	
50	165	99	125	230	230	20	3	4-18	133	12	12	
65	185	118	145	290	290	20	3	4-18	154	16	16	
80	200	132	160	310	310	22	3	8-18	176	20	20	
100	220	156	180	350	350	24	3	8-18	204	28	28	
125	250	184	210	400	400	26	3	8-18	267	45	45	
150	285	211	240	480	480	26	3	8-22	310	62	62	
200	340	266	295	600	600	30	3	12-22	405	112	112	
250	405	319	355	730	605	32	3	12-26	455	163	125	
300	460	370	410	850	635	32	4	12-26	516	256	145	
350	520	430	470	980	696	32	4	16-26	495	368	214	
400	580	482	525	1100	790	38	4	16-30	560	440	304	
450	640	532	585	1200	850	40	4	20-30	641	--	396	
500	715	585	650	1250	978	42	4	20-33	850	--	450	
600	840	685	770	1450	1295	48	5	20-36	980	--	700	

FLANGED GATE VALVE

Characteristic of Product

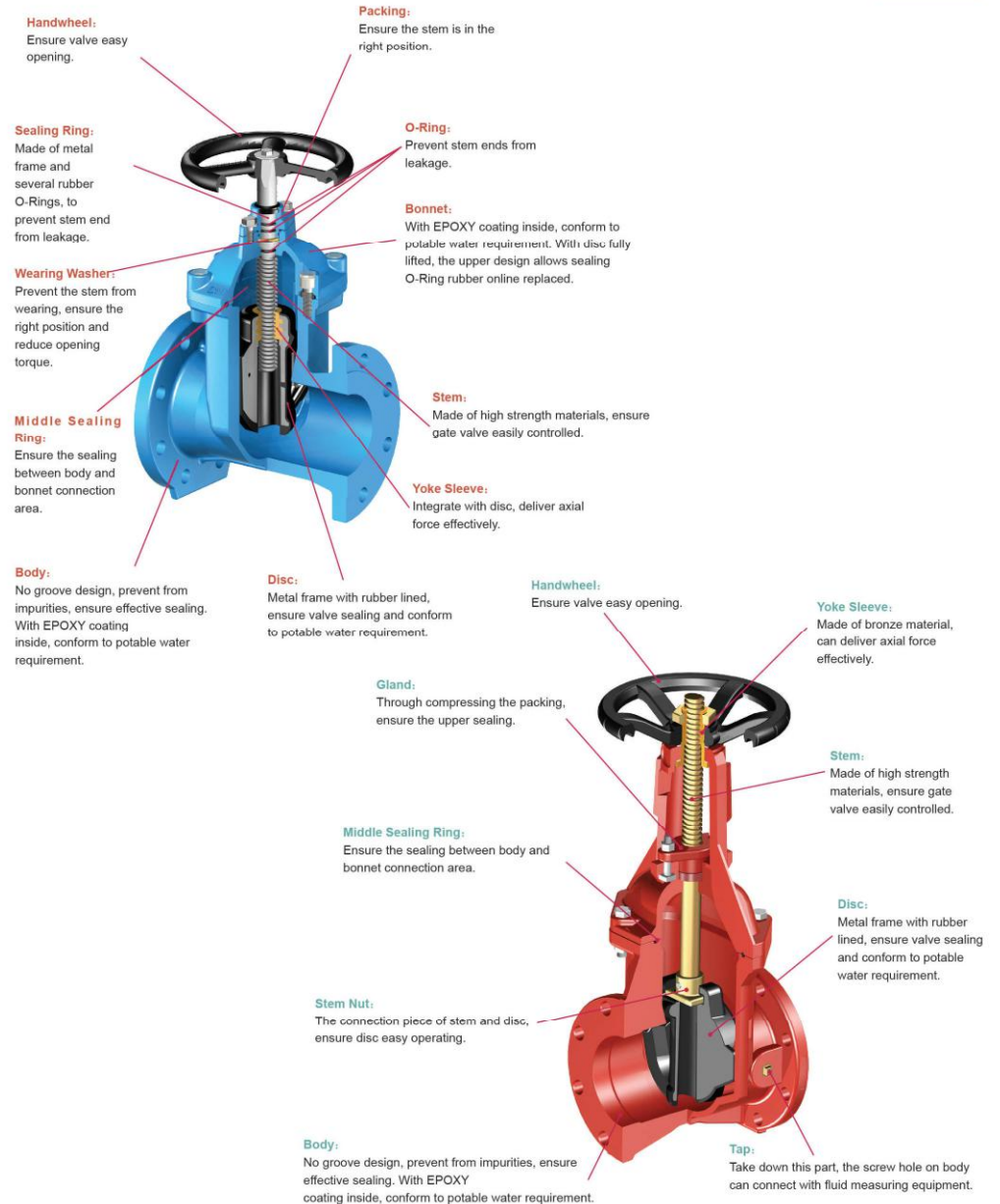
- On-line replacement of top seal; Easy installation and maintenance.
- Integral rubber-clad disc: The ductile iron framework is thermal-clad integrally with high-performance rubber, ensuring tight seal and rust prevention.
- Integrated brass nut: By means of special casting process, the brass stem nut is integrated with the disc with secure connection, thus the product is safe and reliable.
- Flat-bottom seat: The sealing surface of the body is flat without hollow, avoiding any dirt deposit.
- Wholly-through flow channel: The whole flow channel is through, giving "zero" pressure loss.
- Dependable top sealing: With multi-O ring structure adopted, the sealing is dependable.
- Epoxy resin coating: The cast is sprayed with epoxy resin coat both inside and outside, and the disc is wholly clad with rubber in accordance with food hygiene requirement, so it is safe and resistant to corrosion.



FLOW CONTROLLED BY US

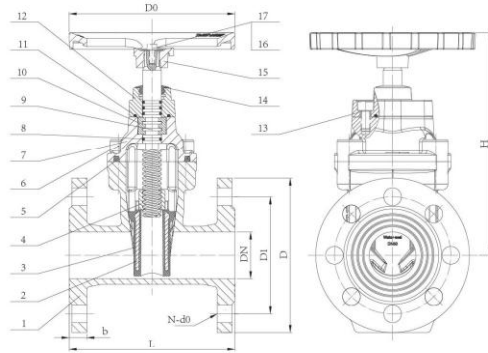
Technical Data

Series	EZ				AZ				WZ				CZ			
DN Nominal Diameter	DN50-600		DN50-300		2.5" -12"		2.5" -12"		DN40-600		DN40-600		DN40-600			
PN Nominal Pressure	Non-Rising Stem		Rising Stem		Non-Rising Stem		Rising Stem		Non-Rising Stem		Rising Stem		Rising Stem			
		1.0MPa	1.6MPa	1.0MPa	1.6MPa	150PSI	200PSI	150PSI	200PSI	1.0MPa	1.6MPa	1.0MPa	1.6MPa	1.6MPa	2.5MPa	4.0MPa
Testing Pressure	Shell	1.5MPa	2.4MPa	1.5MPa	2.4MPa	225PSI	300PSI	225PSI	300PSI	1.5MPa	2.4MPa	1.5MPa	2.4MPa	2.4MPa	3.75MPa	6.0MPa
	Sealing	1.1MPa	1.76MPa	1.1MPa	1.76MPa	165PSI	220PSI	165PSI	220PSI	1.1MPa	1.76MPa	1.1MPa	1.76MPa	1.76MPa	2.75MPa	4.4MPa
Working Temperature	-15--+25															
Suitable Media	Fresh water, Sewage, Sea water, Air, Vapour, Food, Medicine, Oils, Acids, Alkalis, Salts, etc.															



FLANGED GATE VALVE

Overall Dimensions & Weight of Series EZ Gate valve



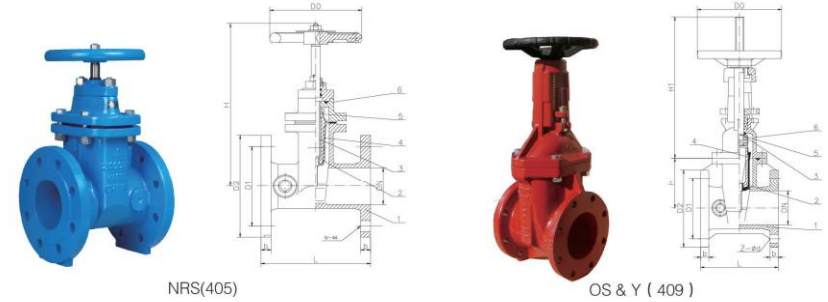
PN1.0/1.6 MPa

DN	L			D		D1		b		N-d0		H	D0	Weight(kg)	
	F4	F5	5163	10	16	10	16	10	16	10	16			10	16
50(2")	150	250	178	165		125		19		4-19		249	180	10	11
65(2.5")	170	270	190	185		145		19		4-19		274	180	13	14
80(3")	180	280	203	200		160		18-19		8-19		310	200	23	24
100(4")	190	300	229	220		180		18-19		8-19		338	240	25	26
125(5")	200	325	254	250		210		18		8-19		406	300	33	35
150(6")	210	350	267	285		240		19		8-23		470	300	42	44
200(8")	230	400	292	340		295		20	8-23	12-23		560	350	76	80
250(10")	250	450	330	395	405	350	355	22	12-23	12-28		642	350	101	116
300(12")	270	500	356	445	460	400	410	24	12-23	12-28		740	400	136	156
350(14")	290	550	381	505	520	460	470	25	16-23	16-25		802	450	200	230
400(16")	310	600	406	565	580	515	525	28	16-25	16-30		907	450	430	495
450(18")	330	650	432	615	640	565	585	29	20-25	20-30		997	620	450	518
500(20")	350	700	457	670	715	620	650	31	20-25	20-34		1110	620	480	552
600(24")	390	800	508	780	840	725	770	33	20-30	20-41		1288	620	530	610

Material of Main Parts

No.	Parts	Material	No.	Parts	Material
1	Body	65-45-12	10	Bisect ring	ZCuZn38Mn2Pb2
2	Disc framework	65-45-12	11	Upper cover O-ring	NBR
3	Rubber Sealed Disc	65-45-12 EPDM	12	Upper cover	65-45-12
4	Shaft Nut	ZCuZn38Mn2Pb2	13	Internal hexagon cylinder-head bolt	Q235-A
5	Middle Gasket	NBR	14	Dust cover	NBR
6	Internal hexagon cylinder-head bolt	Q235-A	15	Hand/wheel	65-45-12
7	Bonnet	65-45-12	16	Flat gasket	304
8	Bonnet O-ring	NBR	17	Hexagon bolt	304
9	Shaft	2Cr13			

Overall Dimensions & Weights of Series AZ Gate valve



NRS(405)

OS & Y (409)

125 PSI

Size mm (inch)	D1	D2	D0	H	L	d	N-Ød	Weight (kg)
DN65(2.5")	139.7(5.5)	178(7)	160(6.3)	256(10.08)	190.5(7.5)	17.53(0.69)	4-19(0.75)	15
DN80(3")	152.4(6)	190.5(7.5)	180(7.09)	275(10.83)	203.2(8)	19.05(0.75)	4-19(0.75)	20.22
DN100(4")	190.5(7.5)	228.6(9)	200(7.87)	310(12.2)	228.6(9)	23.88(0.94)	8-19(0.75)	30.5
DN150(6")	241.3(9.5)	279.4(11)	251(9.88)	408(16.06)	266.7(10.5)	25.4(1)	8-22(0.88)	53.75
DN200(8")	298.5(11.75)	342.9(13.5)	286(11.26)	512(20.16)	292.1(11.5)	28.45(1.12)	8-22(0.88)	86.33
DN250(10")	362(14.252)	406.4(16)	316(12.441)	606(23.858)	330.2(13)	30.23(1.19)	12-25.4(1)	133.33
DN300(12")	431.8(17)	482.6(19)	356(14.06)	716(28.189)	355.6(14)	31.75(1.25)	12-25.4(1)	319

OS & Y (409)

125 PSI

Size mm (inch)	D1	D2	D0	H	H1	L	b	N-Ød	Weight (kg)
DN65(2.5")	139.7(5.5)	178(7)	182(7.17)	126(4.96)	296(11.614)	190.5(7.5)	17.53(0.69)	4-19(0.75)	25
DN80(3")	152.4(6)	190.5(7.5)	250(9.84)	130(5.12)	345(13.583)	203(8)	19.05(0.75)	4-19(0.75)	31
DN100(4")	190.5(7.5)	228.6(9)	250(9.84)	157(6.18)	420(16.535)	228.6(9)	23.88(0.94)	8-19(0.75)	48
DN150(6")	241.3(9.5)	279.4(11)	302(11.89)	225(8.86)	540(21.26)	266.7(10.5)	25.4(1)	8-22.4(0.882)	72
DN200(8")	298.5(11.75)	344(13.54)	345(13.58)	285(11.22)	708(27.87)	292(11.5)	28.45(1.12)	8-22.4(0.882)	132
DN250(10")	362(14.252)	406(15.98)	408(16.06)	324(12.760)	927(36.5)	330.2(13)	30.23(1.19)	12-25.4(1)	210
DN300(12")	431.8(17)	483(19.02)	483(19.02)	383 (15.08)	1025(40.35)	355.6(14)	31.75(1.25)	12-25.4(1)	315

Material of Main Parts

NO.	Name	Material	
1	Body	HT200 ASTM A216 CL.B	
2	Rubber Disc	QT450+NBR ASTM A536 65-45-12+NBR	
3	Stem	405	Y1Cr13 416
		409	ASTM C62300
4	Sealing Face	ZQAI 9-4	
5	Stem Nut	ASTM C95200	
6	Bonnet	ASTM A216 CL.B	