



0.36W
0.72W
1.08W
1.20W

68LM
140LM
210LM
220LM

170°

IP66

High Light Efficacy **200LM/W**

Injection molding plus ultrasonic welding technology.
Integrated transparent 170°optic lens.
Constant current.



Features



- Powered by high output 2835 LED.
- Constant current.
- Integrated transparent 170°optic lens.
- 20 pcs per string.
- CE, RoHS,UL,TUV, BIS, CB and LM-80 certified.

Application



- Apply to 4-15 cm depth illuminate letter or light box at airports,metros, banks, buildings and shopping malls, etc.

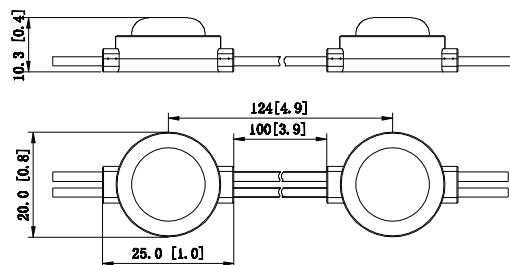
Parameters

Items	Parameters			
Part Number	ZE01CB3	ZE02CB3	ZE03CB3	ZE04CB3
CCT (K)	6200-6800/Red/Blue/Green	6200-6800/Red/Blue/Green	6200-6800/Red/Blue/Green	6200-6800/Red/Blue/Green
Beaming Angle (°)	170	170	170	170
Voltage (V)	DC12V	DC12V	DC12V	DC12V
Power (W)	0.36	0.72	1.08	1.2
Luminous Flux (lm)	68	140	210	220
CRI (Ra)	≥70	≥70	≥70	≥70
Driving Method	constant current	constant current	constant current	constant current
Dimension (mm)	25*20*10.3	50*14.6*10.3	76*14.6*10.3	48*44*10.3
Maximum Connection(PCS)	20	20	20	20
Working Tem. (°C)	-25 ~ +60	-25 ~ +60	-25 ~ +60	-25 ~ +60
Storage Tem. (°C)	-25 ~ +70	-25 ~ +70	-25 ~ +70	-25 ~ +70
Protection Grade	IP66	IP66	IP66	IP66

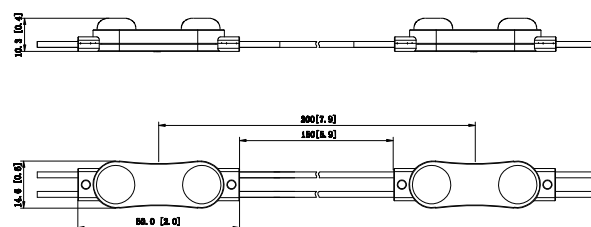
Dimension

Unit:mm

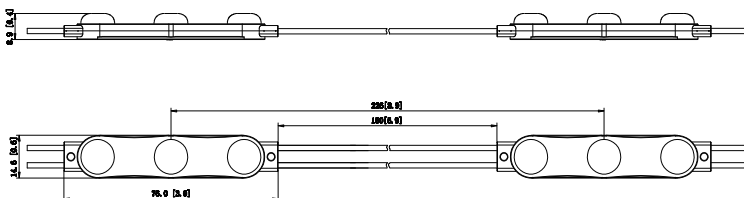
ZE01CB3



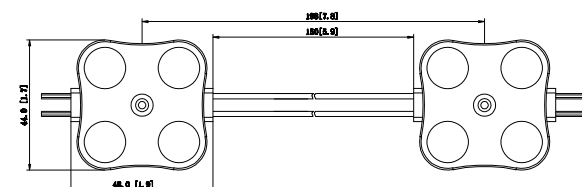
ZE02CB3



ZE03CB3

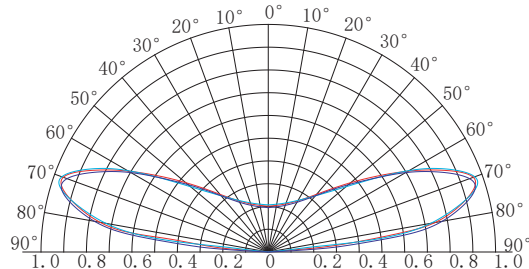


ZE04CB3

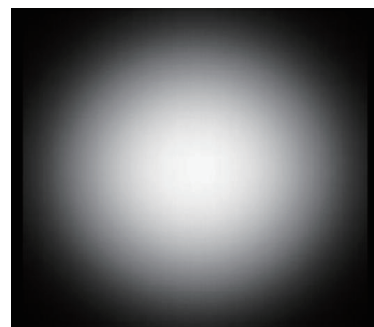




Beaming Angle



Beaming Angle 170°



Reference Scheme



ZE01CB3

Depth(mm)	Distance(mm)	Density(pcs/m ²)	Illumination(lux)	Illumination Effect
Dz=40	Dx=80 Dy=70	179	3500	Uniform illumination
Dz=60	Dx=100 Dy=90	111	3100	Uniform illumination
Dz=80	Dx=110 Dy=100	91	2800	Uniform illumination
Dz=100	Dx=120 Dy=110	76	2300	Uniform illumination

ZE02CB3

Depth(mm)	Distance(mm)	Density(pcs/m ²)	Illumination(lux)	Illumination Effect
Dz=60	Dx=100 Dy=90	111	6000	Uniform illumination
Dz=80	Dx=110 Dy=110	76	5500	Uniform illumination
Dz=100	Dx=120 Dy=130	55	4700	Uniform illumination
Dz=120	Dx=160 Dy=150	42	3100	Uniform illumination
Dz=140	Dx=160 Dy=150	42	2500	Uniform illumination

ZE03CB3

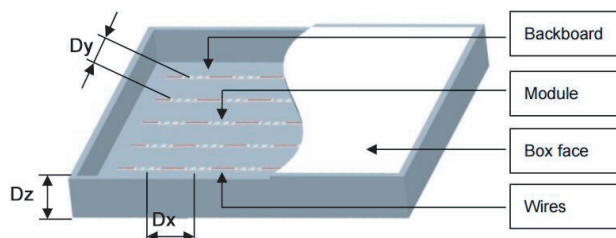
Depth(mm)	Distance(mm)	Density(pcs/m ²)	Illumination(lux)	Illumination Effect
Dz=60	Dx=130 Dy=100	77	5300	Uniform illumination
Dz=80	Dx=150 Dy=130	51	4700	Uniform illumination
Dz=100	Dx=170 Dy=150	39	4200	Uniform illumination
Dz=120	Dx=190 Dy=170	31	3500	Uniform illumination
Dz=140	Dx=190 Dy=170	31	3000	Uniform illumination

ZE04CB3

Depth(mm)	Distance(mm)	Density(pcs/m ²)	Illumination(lux)	Illumination Effect
Dz=60	Dx=130 Dy=130	59	6000	Uniform illumination
Dz=80	Dx=150 Dy=150	44	5800	Uniform illumination
Dz=100	Dx=170 Dy=170	35	4800	Uniform illumination
Dz=120	Dx=190 Dy=190	28	3900	Uniform illumination
Dz=140	Dx=190 Dy=190	28	3200	Uniform illumination

Remark:

- The transmittance of the Acrylic was 30%.
- The above data is for reference only.





1. Module and Accessories

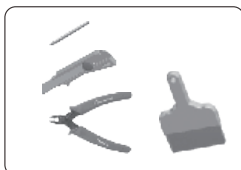


Modules



Wire Connector (Standard)

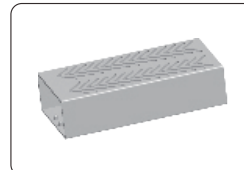
2.Recommended Tools



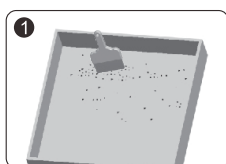
Dust brush, cutter, pencil,
wire stripper, and drill



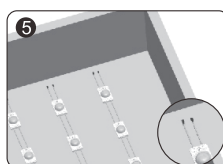
Screw



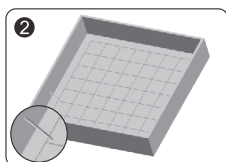
Power Supply



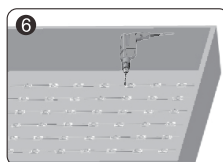
- Clean inside the light box.



- Strip the end wire for 10mm and cap with the wire connector. Waterproof and anti-corrosion must be done on the connectors.

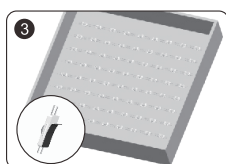


- Determine the appropriate layout.

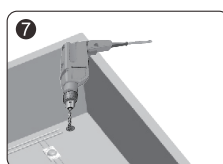


- Adjust modules to the optimal position and secure with screws.

⚠ Note: Avoid breaking the module and wire when fixing with a drill.

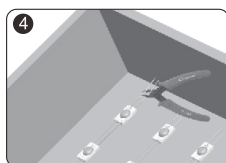


- Peel tape backing and stick modules into place.



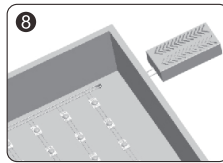
- Drill a hole for connecting power cable. Fixation and protection for the cable must be done on the hole.

⚠ Note: Avoid breaking the light box in drilling the hole.



- Remove the unneeded modules.

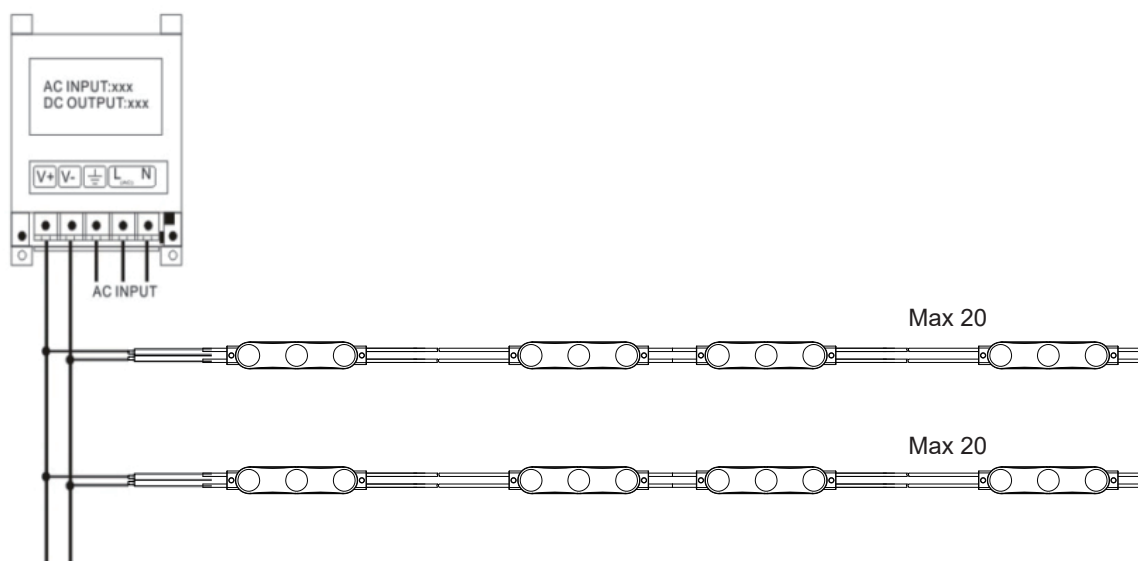
⚠ Note: Cut in the middle position of the wires between modules.



- Connect to the power cable and make sure that the polarity for connection is correct.

⚠ Note: Red wire is positive and black wire is negative.

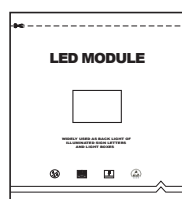
Wire Connection >



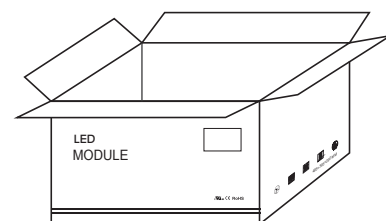
Packing >



LED Module: 20pcs per string



Wrapped with anti-static bag



Packed in a carton

Packing Specification >

- Antistatic bag adopted
- Packing information

Part Number	ZE01CB3	ZE02CB3	ZE03CB3	ZE04CB3
Carton dimension(mm)	490*450*220	490*450*220	490*450*220	490*450*220
Bags per carton	10	10	10	12
Quantity per bag (pcs)	200	120	100	80
Quantity per carton(pcs)	2000	1200	1000	960
Net Weight(kg)	10.2(1±10%)	8.1(1±10%)	10.6(1±10%)	15.2(1±10%)
Gross Weight(kg)	12.2(1±10%)	10.2(1±10%)	12.8(1±10%)	17.5(1±10%)

- Due to the packing manner difference, please subject to the original products in case of discrepancy found between the picture and actual product.

Instructions



- Disassembling or modifying the product is forbidden.
- Installation with power on is forbidden.
- Any organic solvent chemical is forbidden.
- Acidic or alkaline adhesive is forbidden when install, neutral glass cement could be used for installation purpose, make it drying in open environment for four hours.
- Isolation and corrosion prevention on all wiring points and wire ends.
- Make sure the power wire is thick enough and ensure the voltage and connections are connected correctly before power on.
- This product should be used in a sign, do not expose it in opening site.
- Installation, maintaining should be done by professional staff.
- 20 pcs in a serial connection maximum.
- The power wire between power supply and module should be less than two meters to keep the same brightness on all parts.
- Initial location with 3M tape, then secure with screws.

Declaration



- Warranty: 5 years.
- In order to ensure the safety, the broken wires need to be replaced by the manufacturer or the service agent, or by the staff with the similar qualification.
- The given data in the specification was based on the laboratory testing, there may be discrepancy found in the actual products.
- The given drawings in the specification are only for reference, there may be discrepancy found in the actual products.
- The products are subject to change without prior notification.



RoHS



CB LM-80



Distributor :

Energy Power Save CO.,LTD.

442/2 Chan Road, Thung-watdon Sathon Bangkok Thailand 10120

Email : info@ledartlamp.com, www.ledartlamp.com