

# INDEX

## Enterprise profile and qualification

### 01

- 12W-30W multi led power output & dimmable sensor light
- Zigbee microwave sensor light
- RF communication version
- Dimmable microwave sensor version
- Standard microwave sensor version
- LED ceiling/wall Light
- LED sensor wall light
- PIR motion sensor version

### LED Ceiling/Wall light

01



### 05

- LED PIR sensor tube
- LED microwave sensor tube
- LED sensor down light

### LED PIR sensor tube / LED PIR down light

11



### 06

- Recessed flush ceiling mounted version
- Sensor switch version
- Surface wall mounted version

### PIR motion sensor

12



### 02

- PIR sensor version
- Microwave sensor version

### LED PIR/ Microwave motion sensor flood light

07



### 07

- On/off version
- Automatic door microwave sensor
- Dimming version
- Multi power output version
- Zigbee microwave sensor
- RF communication version combine with LED driver

### Microwave motion sensor

13



### 03

- LED dusk-to-dawn bulb
- LED microwave sensor bulb
- LED microwave sensor & dusk-to-dawn bulb, 2-in-1
- LED PIR sensor bulb

### LED bulb

08



### 08

- Remote control socket
- Wifi socket
- PIR sensor socket
- Standby killer/ Intelligent learning IR power saving socket

### Socket

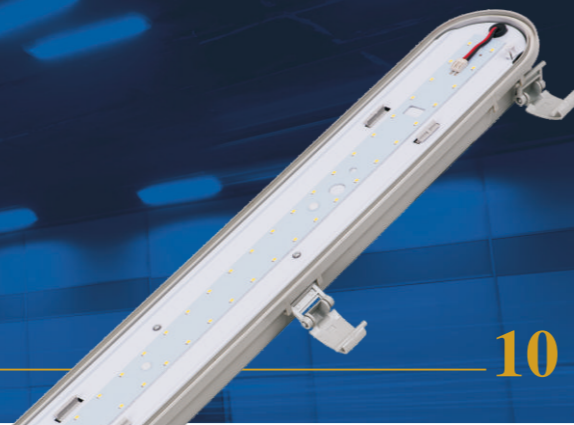
16



### 04

### LED tri-proof light

10



# POSA

Distributor : [www.7-mars.com](http://www.7-mars.com)



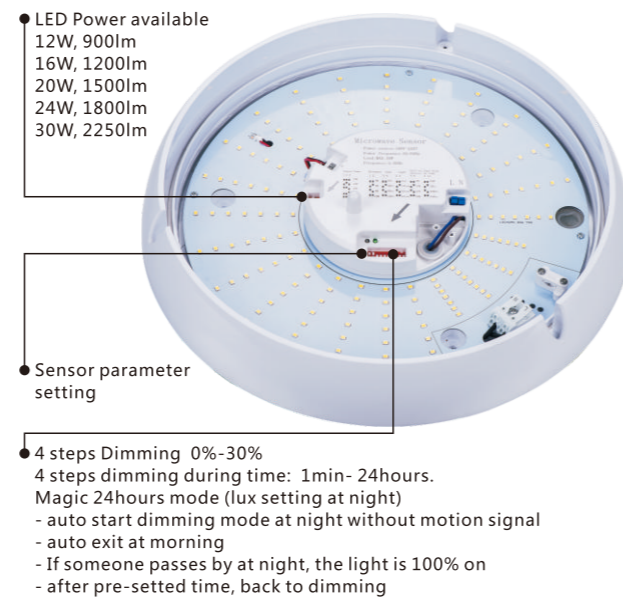
## 12W-30W multi led power output & dimmable sensor light

1 Light = 1 Ceiling Light + 1 Microwave Sensor + 1 Dusk-to-dawn sensor + 1 Dimmer + 5 different led output power. If you want to save your stocks, but you want to expand more variation in one light, this light is your ideal solution.

The most magic is: **ONE** light can have **FIVE** different led output power, choose what you need on dip switch code, simple and practical.

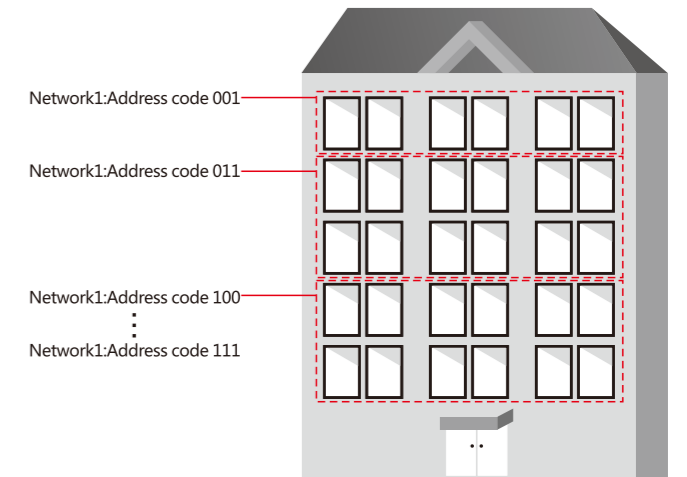
### Dimmable microwave sensor:

- Stand-by dim time: 24h/ 1min/ 30min/ 60min, adjustable
- Stand-by brightness: 0%/ 10%/ 20%/ 30%, adjustable
- Detect distance (radii.): 3m/ 5m/ 8m/ 10m, adjustable
- Hold time: 10sec/ 1min/ 5min/ 10min, adjustable
- Daylight sensor: 10-2000LUX, adjustable
- Detection angle: 360° × 180°



## Zigbee microwave sensor light

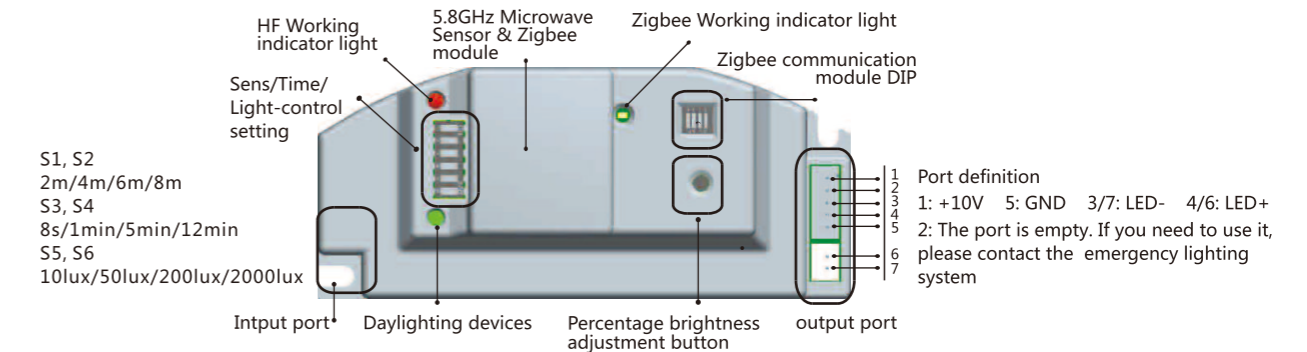
- ZigBee Technology network has a high capacity, which leads all the lamps in an area can be controlled by one or more host.
- In the control system, the data to be transmitted is rarely. Taking advantage of low power consumption of the ZigBee technology, energy saving is reached.
- ZigBee Technology is an own organizing network, it will not crash due to the broken of one or several nodes, neither be influenced by increasing one or several nodes.
- Adopting 2.4G ZigBee technology, you can divide the network into 8 networks using 8 different address codes, which is convenient for using different address codes in different floors or contiguous installation. For example: The lamps in one floor use one address code (the same code) to be a network, the upside or downside floor can use another to be another network. You can also use one address code for 3 floors or a gallery. See picture:



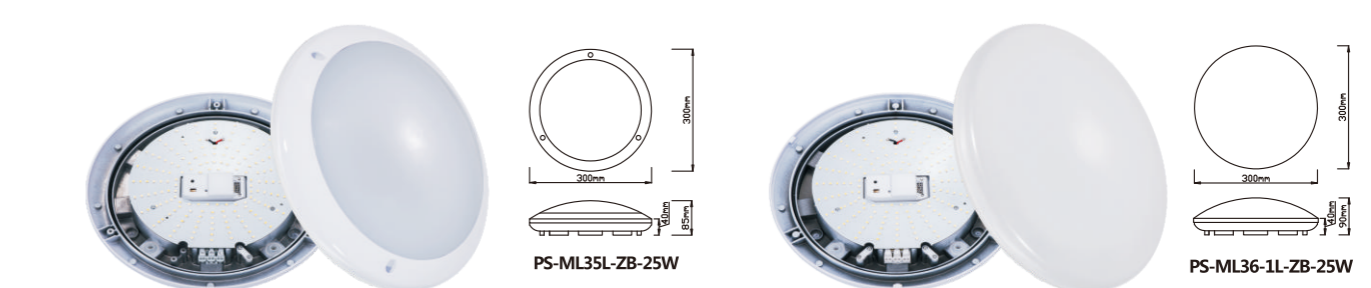
Master-slave toggle Switch: Switch to "1" The lamp will only receive Signal; Switch to "0" The lamp will receive and send out signal.  
Radio Linking range: 20m Radio signal transfer in wide space.

### Microwave sensor

- Light-control: 10lux-daylight, adjustable
- Time setting: 10sec-12min, adjustable
- Detection distance: 2-8m (radii.), adjustable
- Light-control: 10lux-daylight, adjustable



Item No.	Power	LED	Luminous Flux	CRI	Microwave Sensor					Material (diffuser/base)	IP Rating	
					Standard	Dimmable	Power Adjustable	RF Linking	Zigbee Linking			Signal Forward
PS-ML105L-D-30W	12-30W	168×SMD2835	900-2250lm	≥80	-	x	x	x	-	-	PC/PC	IP54
PS-ML106L-D-30W	12-30W	168×SMD2835	900-2250lm	≥80	-	x	x	x	-	-	PC/PC	IP65
PS-ML35L-D-30W	12-30W	168×SMD2835	900-2250lm	≥80	-	x	x	x	-	-	PC/Aluminium dia-casting	IP54
PS-ML36L-D-30W	12-30W	168×SMD2835	900-2250lm	≥80	-	x	x	x	-	-	PMMA/Aluminium die-casting	IP20
PS-ML36-1L-D-30W	12-30W	168×SMD2835	900-2250lm	≥80	-	x	x	x	-	-	PC/Aluminium dia-casting	IP20



Item No.	Power	LED	Luminous Flux	CRI	Sensor Type	Material (diffuser/base)	IP Rating
PS-ML35L-ZB-25W	25W	160×SMD2835	1680lm	≥80	Zigbee sensor	PC/Aluminum die-casting	IP54
PS-ML36-1L-ZB-25W							IP20

## RF communication version

- It is an ideal choice for automatic lighting application in the long corridor, stairs or public area
- With the RF digital communication function the lights don't need to be wired in series and achieve light on/ stand-by dim/ off in groups by motion detection
- RF transmission upto 20m in open area
- 4 dips for group setting, up to 16 groups possible.
- RF on or off adjustable, have transfer signal and half brightness button

## Wireless communication microwave sensor:

- Stand-by dim time: 24h / 30s / 1min / 5min / 10min / 30min / 1h / 2h
- Stand-by brightness: 0% / 5% / 10% / 20% / 30% / 40% / 50% / 60%
- Detect distance (radii.): 2-10m, adjustable
- Hold time: 10sec - 5min, adjustable
- Daylight sensor: 2-2000LUX, adjustable
- Detection angle: 360° × 180°
- Max: 16 groups
- Wireless distance: 20m in open area
- Frequency: 433.92 MHz



Item No.	Power	LED	Luminous Flux	CRI	Microwave Sensor					Material (diffuser/base)	IP Rating
					Standard	Dimmable	RF Linking	Zigbee Linking	Signal Forward		
PS-ML105L-D-RF-N	16W	96×SMD2835	1030lm	≥80	-	-	×	-	×	PC/PC	IP54
PS-ML106L-D-RF-N	16W	96×SMD2835	1030lm	≥80	-	-	×	-	×	PC/PC	IP65
PS-ML35L-D-RF-N-25W	25W	160×SMD2835	1680lm	≥80	-	-	×	-	×	PC/Aluminum die-casting	IP54
PS-ML36-1L-D-RF-N-25W	25W	160×SMD2835	1680lm	≥80	-	-	×	-	×	PC/Aluminum die-casting	IP20
PS-ML3001-1L-D-RF-N	16W	96×SMD2835	1030lm	≥80	-	-	×	-	×	PC/PC	IP54

## Dimmable microwave sensor:

- Installation and sensor set doesn't need to open the light diffuser
- Sensor or emergency status through visible led color indicator easy to know
- Battery is able to turn on/off

## Dimmable microwave sensor:

- Stand-by dim time: 1min / 30min / 60min / 24h
- Stand-by brightness: 0% / 10% / 20% / 30%
- Detect distance (radii.): 3m / 5m / 8m / 10m
- Hold time: 10sec / 1min / 5min / 10min
- Daylight sensor: 10lux / 30lux / 50lux / 2000lux
- Detection angle: 360°



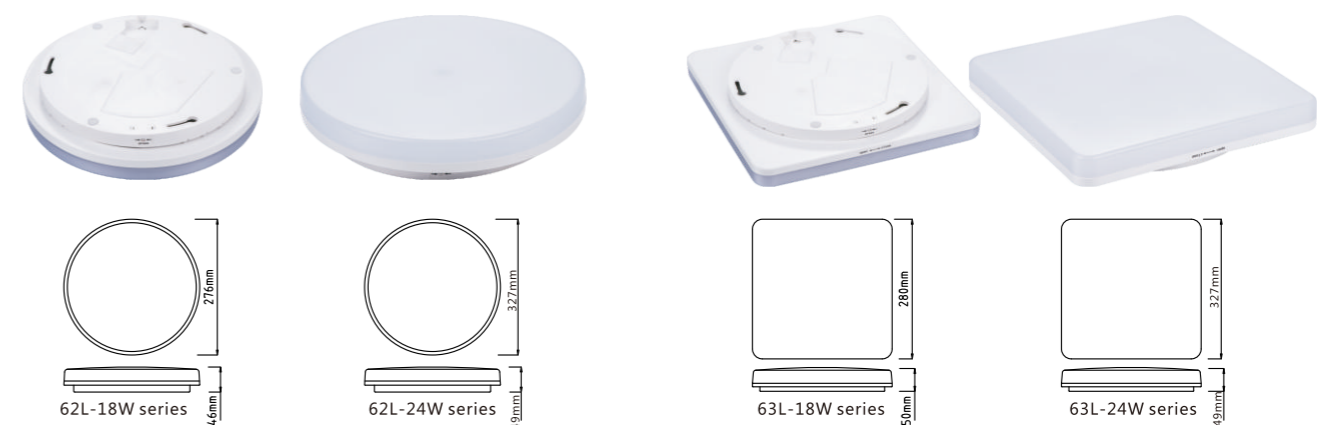
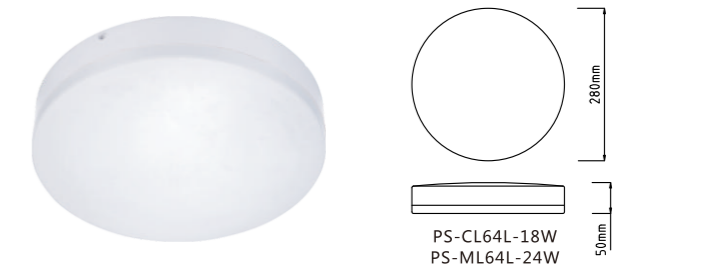
## Emergency:

- 7.4 V / 2200mAh Lithium battery
- Continuous illumination time: ≥180min

Item No.	Power	LED	Luminous Flux	CRI	Microwave Sensor			Emergency	Material (diffuser/base)	IP Rating
					Standard	Dimmable				
PS-ML60L-D	15W	72×SMD2835	1000lm	≥80	-	×	-	PC/PC	IP44	
PS-ML60LE-D	15W(AC) 3.5W(DC)	72×SMD2835	1000lm(AC) 250lm(DC)	≥80	-	×	×	PC/PC	IP44	
PS-CL60L	15W	72×SMD2835	1000lm	≥80	-	-	-	PC/PC	IP44	

## Standard microwave sensor:

- Detect distance (radii.): 2m / 5m / 8m / 10m, adjustable
- Hold time: 5sec / 30sec / 1min / 5min, adjustable
- Daylight sensor: 2lux / 10lux / 50lux / 2000lux, adjustable
- Detection angle: 360° × 180°



Item No.	Power	LED	Luminous Flux	CRI	Microwave Sensor		Material (diffuser/base)	IP Rating
					Standard	Dimmable		
PS-ML62L-18W	18W	160×SMD2835	1800lm	≥80	×	-	PC/PC	IP54
PS-CL62L-18W	18W	160×SMD2835	1800lm	≥80	-	-		
PS-ML62L-24W	24W	240×SMD2835	2800lm	≥80	×	-		
PS-CL62L-24W	24W	240×SMD2835	2800lm	≥80	-	-		
PS-ML63L-18W	18W	195×SMD2835	1900lm	≥80	×	-		
PS-CL63L-18W	18W	195×SMD2835	1900lm	≥80	-	-		
PS-ML63L-24W	24W	288×SMD2835	2800lm	≥80	×	-		
PS-CL63L-24W	24W	288×SMD2835	2800lm	≥80	-	-		
PS-CL64L-18W	18W	160×SMD2835	1500lm	≥80	-	-		
PS-ML64L-24W	24W	160×SMD2835	1900lm	≥80	×	-		



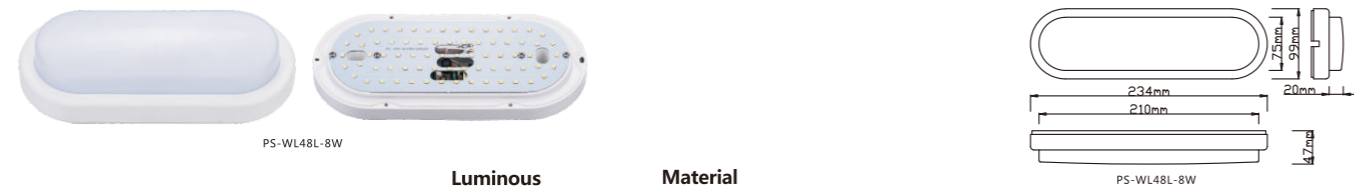


## LED ceiling/wall Light



Item No.	Power	LED	Luminous Flux	CRI	Material (diffuser/base)	IP Rating
PS-WL49L-12W	12W	60×SMD2835	850lm	≥80	PC/PC	IP54
PS-WL51L-15W	15W	75×SMD2835	1200lm	≥80	PC/PC	IP54
PS-WL50L-18W	18W	96×SMD2835	1400lm	≥80	PC/PC	IP54

## LED ceiling/wall Light

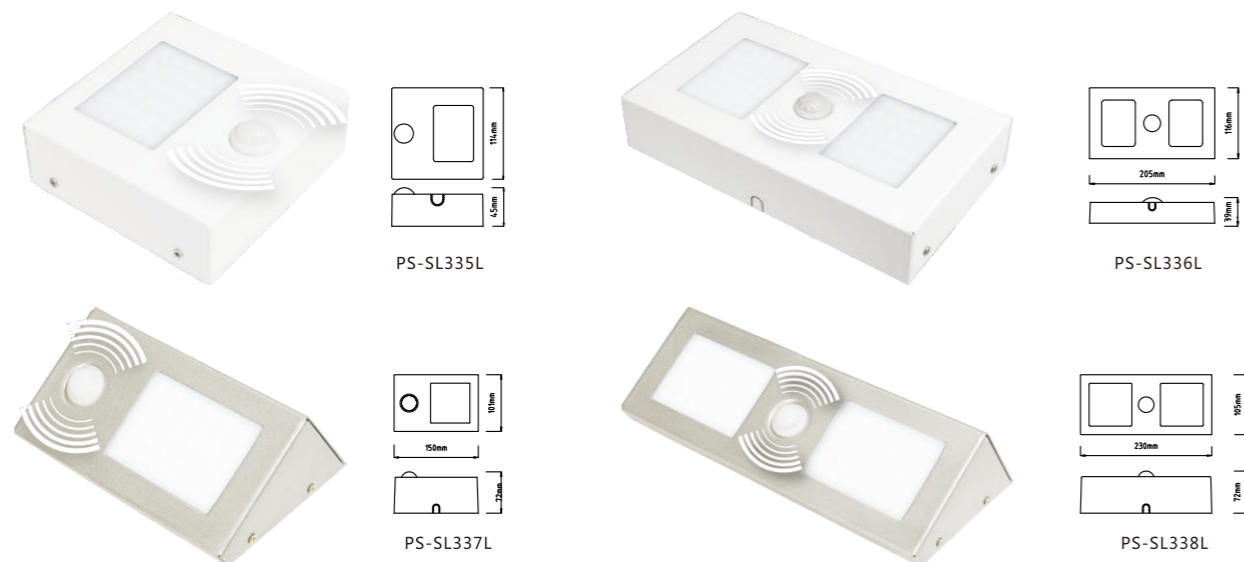


Item No.	Power	LED	Luminous Flux	CRI	Material (diffuser/base)	IP Rating
PS-WL48L-8W	8W	40×SMD2835	550lm	≥80	PC/PC	IP54
PS-WL48L-12W	12W	60×SMD2835	850lm	≥80	PC/PC	IP54

## LED sensor wall light:

Turn on and turn off automatically  
Ambient light, time delay can be adjustable, with off switch, can close the sensor function  
Steel body and PC cover, no metal burrs, UV protection

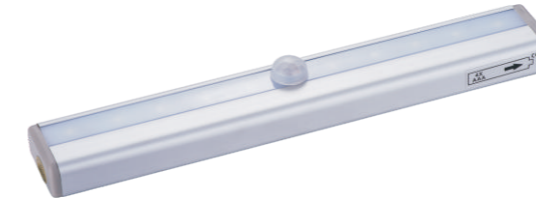
- Detect distance (dia): max.6m (<24°C)
- Hold time: 5sec/ 30sec/ 1min / 3min / 5min / 8min
- Daylight sensor: 10lux-2000lux



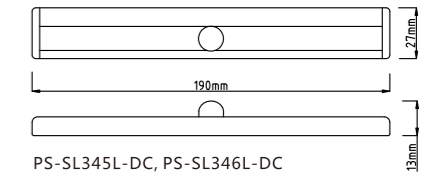
Item No.	Power	LED	Luminous Flux	CRI	Material	IP Rating
PS-SL335L	4W	30×SMD2835	400lm	≥80	steel body and PC cover diffuser	IP20
PS-SL336L	8W	60×SMD2835	800lm	≥80		
PS-SL337L	4W	30×SMD2835	400lm	≥80		
PS-SL338L	8W	60×SMD2835	800lm	≥80		

## PIR motion sensor:

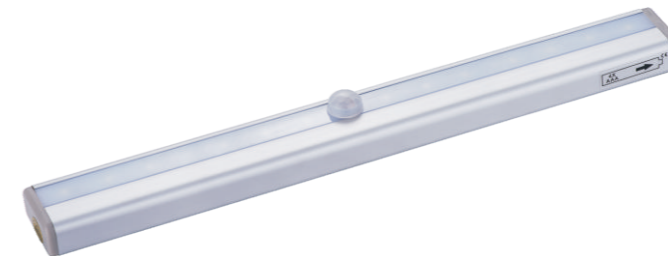
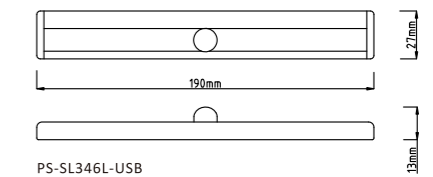
- Detect distance (dia): <3m
- Hold time: 30sec
- Daylight sensor: <20LUX(adjustable)



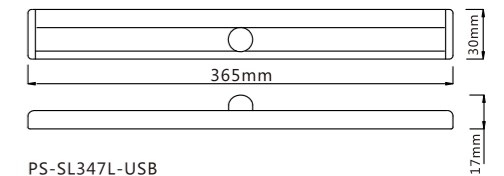
Item No.	Power	LED	Luminous Flux	CRI	Material (diffuser/base)	IP Rating
PS-SL345L-DC	0.6W	6×SMD2835	50lm	≥80	PC+ABS	IP20
PS-SL346L-DC	1W	8×SMD2835	70lm	≥80	+Aluminium	



Item No.	Input Voltage	Power	LED	Luminous Flux	CRI	Material (diffuser/base)	IP Rating
PS-SL346L-USB	USB DC5V	1W	8×SMD2835	70lm	≥80	PC+ABS +Aluminium	IP20



Item No.	Input Voltage	Power	LED	Luminous Flux	CRI	Material (diffuser/base)	IP Rating
PS-SL347L-USB	USB DC5V	1.6W	20×SMD2835	150lm	≥80	PC+ABS +Aluminium	IP20



# LED PIR/ Microwave Motion Sensor Flood Light

## PIR sensor version :

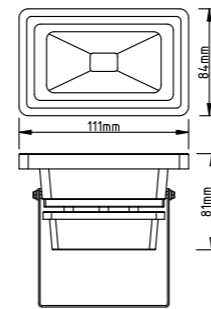
- Detect distance (dia.): 2-8m
- Hold time: 10sec to 3min
- Daylight sensor: 2-2000lux



PS-FL-LED001S-10



PS-FL-LED001 series



PS-FL-LED001-10

Item No.	Power	LED	Luminous Flux	IP Rating	PIR sensor
PS-FL-LED001S-10	10W	1×10W COB	540lm	IP65	×
PS-FL-LED001-10					-
PS-FL-LED001S-20	20W	1×20W COB	1080lm		×
PS-FL-LED001-20					-
PS-FL-LED001S-30	30W	1×30W COB	1620lm		×
PS-FL-LED001-30					-
PS-FL-LED001S-50	50W	1×50W COB	2700lm	×	
PS-FL-LED001-50				-	

## PIR sensor version :

- Detect distance (dia.): 2-8m
- Hold time: 10sec-3min
- Daylight sensor: 2-2000lux

## Microwave sensor version :

- Hold time: 5sec / 90sec / 3min / 20min
- Detect distance (radii.): 5m/ 10m
- Daylight sensor: 25lux / 2000lux



PS-FL-LED067SS-20W



PS-FL-LED067SS-30W



PS-FL-LED067SS-50W



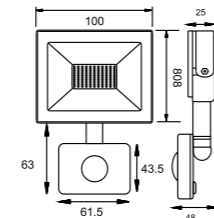
PS-FL-LED067-20W



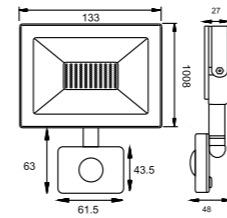
PS-FL-LED067-50W



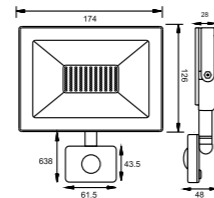
PS-FL-LED067-100W



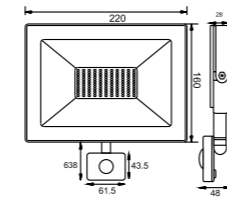
PS-FL-LED067SS-10W



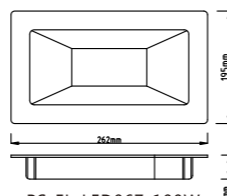
PS-FL-LED067SS-20W



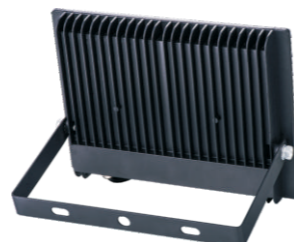
PS-FL-LED067SS-30W



PS-FL-LED067SS-50W



PS-FL-LED067-100W



Item No.	Power	LED	Luminous Flux	IP Rating	Sensor type	
					PIR sensor	Microwave sensor
PS-FL-LED067SS-10W	10W	24×SMD2835	700lm	IP44	×	-
PS-FL-LED067-10W				IP65	-	-
PS-FL-LED067SS-20W	20W	24×SMD2835	1400lm	IP44	×	-
PS-FL-LED067-20W				IP65	-	-
PS-FL-LED067SS-30W	30W	48×SMD2835	2100lm	IP44	×	-
PS-FL-LED067-30W				IP65	-	-
PS-FL-LED067RS-50W	50W	72×SMD2835	3500lm	IP65	-	×
PS-FL-LED067-50W				IP65	-	-
PS-FL-LED067RS-70W	70W	96×SMD2835	4900lm	IP65	-	×
PS-FL-LED067SS-70W				IP44	×	-
PS-FL-LED067-70W	IP65	-	-			
PS-FL-LED067RS-100W	100W	144×SMD2835	7000lm	IP65	-	×
PS-FL-LED067SS-100W				IP44	×	-
PS-FL-LED067-100W	IP65	-	-			
PS-FL-LED067-150W	150W	208×SMD2835	10500lm	IP65	-	-
PS-FL-LED067-200W	200W	288×SMD2835	14000lm	IP65	-	-
PS-FL-LED067-300W	300W	432×SMD2835	21000lm	IP65	-	-
PS-FL-LED067-400W	400W	624×SMD2835	28000lm	IP65	-	-

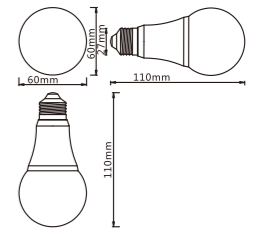
# LED Bulb

## LED dusk-to-dawn bulb

- Daylight – the bulb is off all of the time
- Evening- The light automatically comes on when the ambient lux drops around 15lux
- Morning –As the morning comes and light level is above around 40lux, the bulb switches off completely.



PS-PLB52LUX-3, 5, 7W



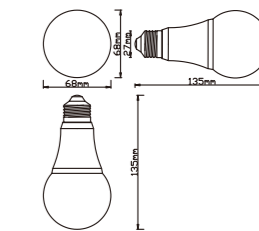
Item No.	Input voltage	Lampholder	Type	LED	Power	Luminous Flux	CRI	Material (diffuser/base)
PS-PLB52LUX-3W	85-265V/AC	E27/B22	A60	3×SMD5730	3W	195lm	80	PC/ Plastic coated aluminum
PS-PLB52LUX-5W			A60	5×SMD5730	5W	330lm	80	
PS-PLB52LUX-7W			A60	7×SMD5730	7W	460lm	80	
PS-PLB52LUX-9W			A60	9×SMD5730	9W	590lm	80	
PS-PLB52LUX-12W			A60	12×SMD5730	12W	780lm	80	

## LED microwave sensor bulb

- The bulb turns on only when the ambient lux is insufficient and has motion detection.
- Detect distance: dia. 6meters.
- Hold time: 1min.
- Daylight sensor: 15-25lux



PS-PLB01RS



PS-PLB01RS-12W

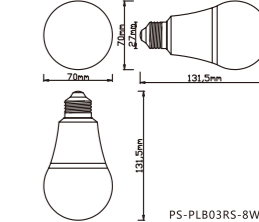
Item No.	Input voltage	Lampholder	Type	LED	Power	Luminous Flux	CRI	Material (diffuser/base)
PS-PLB01RS-3W	85-265V/AC	E27/B22	A60	3XSMD2835	3W	195lm	80	PC/ Plastic coated aluminum
PS-PLB01RS-5W			A60	5XSMD2835	5W	330lm	80	
PS-PLB01RS-7W			A60	7XSMD2835	7W	460lm	80	
PS-PLB01RS-9W			A60	9XSMD2835	9W	590lm	80	
PS-PLB01RS-12W			A60	12XSMD2835	12W	780lm	80	

## LED microwave sensor & dusk-to-dawn bulb, 2-in-1

- Daylight – the bulb is off all of the time
- Evening – The light automatically comes on at the dimmed level 10% illumination, when the ambient light level drops around 30lux.
- Evening/Night – the light remains on dim light and goes up to the full brightness when someone walks by.
- Morning –As the morning comes and light level is above around 80lux, the bulb switches off completely.
- Detect distance: 8-10 meters, radii.
- Hold time: 1min.



PS-PLB03RS-8W



PS-PLB03RS-8W

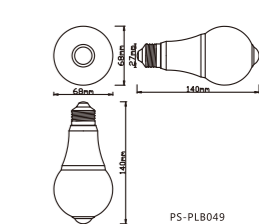
Item No.	Input voltage	Lampholder	Type	LED	Power	Luminous Flux	CRI	Material (diffuser/base)
PS-PLB03RS-8W	200-240V/AC	E27/B22	A65	70XSMD2835	8W	550lm	80	PC/ Plastic coated aluminum

## LED PIR sensor bulb

- The bulbs turn on only when the ambient lux is insufficient and has motion detection.
- Detect distance: dia. 6 meters.
- Hold time: 1min.
- Daylight sensor: 15-25lux



PS-PLB49



PS-PLB49

Item No.	Input voltage	Lampholder	Type	LED	Power	Luminous Flux	CRI	Material (diffuser/base)
PS-PLB49-3W	85-265V/AC	E27/B22	A60	3×SMD5730	3W	195lm	80	PC/ Plastic coated aluminum
PS-PLB49-5W			A60	5×SMD5730	5W	330lm	80	
PS-PLB49-7W			A60	7×SMD5730	7W	460lm	80	
PS-PLB49-9W			A60	9×SMD5730	9W	590lm	80	
PS-PLB49-12W			A60	12×SMD5730	12W	780lm	80	