



P L A S M A I O N S

ENERGY POWER SAVE CO.,LTD

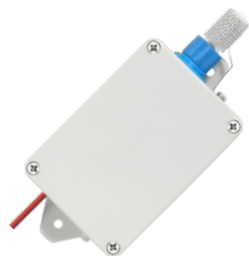
442/2 Chan Road, Thungwat-Don Sathon Bangkok Thailand 10120 Email : info@7-mars.com

TEL : +66 (02) 114 7145-9 Auto. 5Line **Skype** : energypowersave
www.7-Mars.com

NO.1 Pipe Series

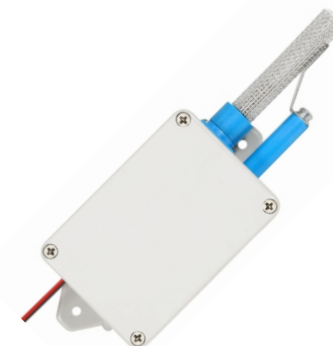
PS-300

- Adapted air volume: 300 CFM
- Voltage: 5V DC
- Power consumption: 4 W
- Adapted air volume: 20 m²
- Size: 128*57*34mm



PS-400

- Adapted air volume: 400 CFM
- Voltage: 12V/24V DC
- Power consumption: 5 W
- Adapted air volume: 30 m²
- Size: 163*57*35mm



PS-500 (Horizontal)

- Adapted air volume: 580 CFM
- Voltage: 12V/24V DC
- Power consumption: 5 W
- Adapted air volume: 30~50 m²
- Size: 133*70*154mm



PS-500 (Vertical section)

- Adapted air volume: 580 CFM
- Voltage: 12V/24V DC
- Power consumption: 5 W
- Adapted air volume: 30~50 m²
- Size: 200*70*50mm



PS-501S/PS-501SE

- Adapted air volume:1500 CFM
- Voltage:DC24V,120V/240V AC
- Power consumption: 6 W
- Adapted air volume:80m³
- Size:178*103*260mm(501S)
- Size:128*53*245mm(501SE)



PS-501S

PS-501SE

PS-502S

- Adapted air volume:3000 CFM
- Voltage:120V/240V AC
- Power consumption: 8 W
- Adapted air volume:150m³
- Size:178*103*260mm



PS-501T

- Adapted air volume:3000 CFM
- Voltage:120V/240V AC
- Power consumption:10 W
- Adapted air volume:100m³
- Size:192*192*430mm



PS-502T

- Adapted air volume:5000 CFM
- Voltage:120V/240V AC
- Power consumption:14 W
- Adapted air volume:200m³
- Size:192*192*430mm



PS-504T (Horizontal)

- Adapted air volume:6500CFM
- Voltage:120V/240V AC
- Power consumption:20 W
- Adapted air volume:400 m³
- Size:545*280*230mm



PS-504T (Vertical section)

- Adapted air volume:6500CFM
- Voltage:120V/240V AC
- Power consumption:20 W
- Adapted air volume:400 m³
- Size:280*280*460mm



PS-505T

- Adapted air volume: 8000 CFM
- Voltage: 120V/240V AC
- Power consumption: 34W
- Application area: 500m²
- Size: 545*280*220mm



PS-505TT

- Adapted air volume: 9500 CFM
- Voltage: 120V/240V AC
- Power consumption: 42 W
- Application area: 600m²
- Size: 710*280*220mm



PS-506T (Horizontal)

- Adapted air volume: 11000 CFM
- Voltage: 120V/240V AC
- Power consumption: 40W
- Application area: 700m²
- Size: 545*280*290mm



PS-506TT (Vertical section)

- Adapted air volume: 13500 CFM
- Voltage: 120V/240V AC
- Power consumption: 45W
- Application area: 800m²
- Size: 310*310*650mm



PS-508T (Vertical section)

- Adapted air volume: 12800 CFM
- Voltage: 120V/240V AC
- Power consumption: 47 W
- Application area: 800m²
- Size: 545*280*450mm



PS-508T (Horizontal)

- Adapted air volume: 12800 CFM
- Voltage: 120V/240V AC
- Power consumption: 47 W
- Application area: 800m²
- Size: 545*280*290mm



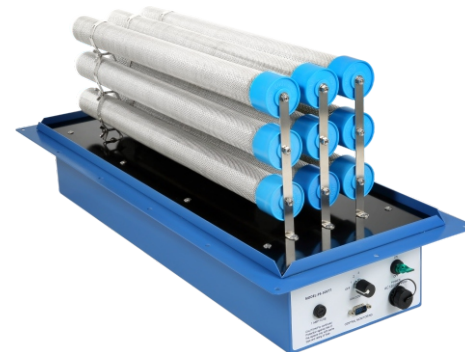
PS-508TT (Vertical section)

- Adapted air volume:15000 CFM
- Voltage:120V/240V AC
- Power consumption:72 W
- Application area:1200m²
- Size:545*280*630mm



PS-509TT

- Adapted air volume:17000 CFM
- Voltage:120V/240V AC
- Power consumption:67 W
- Application area:1800m²
- Size:710*280*290mm



PS-501TO (Without fan)

- Adapted air volume:3000 CFM
- Voltage:120V/240V AC
- Power consumption:15W
- Application area:100m²
- Size:460*200*300mm



PS-502TO (Without fan)

- Adapted air volume:5000 CFM
- Voltage:120V/240V AC
- Power consumption:14W
- Application area:200m²
- Size:460*200*300mm



PS-509TO (Without fan)

- Adapted air volume:17000 CFM
- Voltage:120V/240V AC
- Power consumption:60W
- Application area:1800m²
- Size:1080*310*360mm



PS-509TO (With fan)

- Adapted air volume:17000 CFM
- Voltage:120V/240V AC
- Power consumption:230W
- Application area:1800m²
- Size:1080*310*360mm



PS-504T (Horizontal)

- Adapted air volume:6500CFM
- Voltage:120V/240V AC
- Power consumption:20 W
- Adapted air volume:400~600m²
- Size:545*280*230mm

Size:2000*925*1750mm

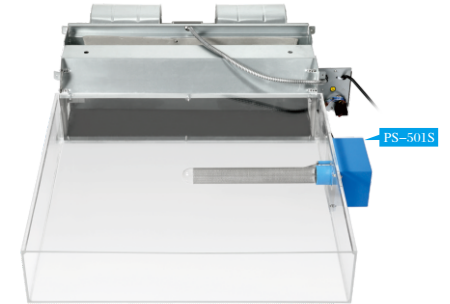


Plasma cold chain/transmission
chain disinfection equipment

PS-501S (Customized models)

- Adapted air volume:1500 CFM
- Voltage:120V/240V AC
- Power consumption: 6 W
- Adapted air volume:80m²
- Size:178*103*430mm

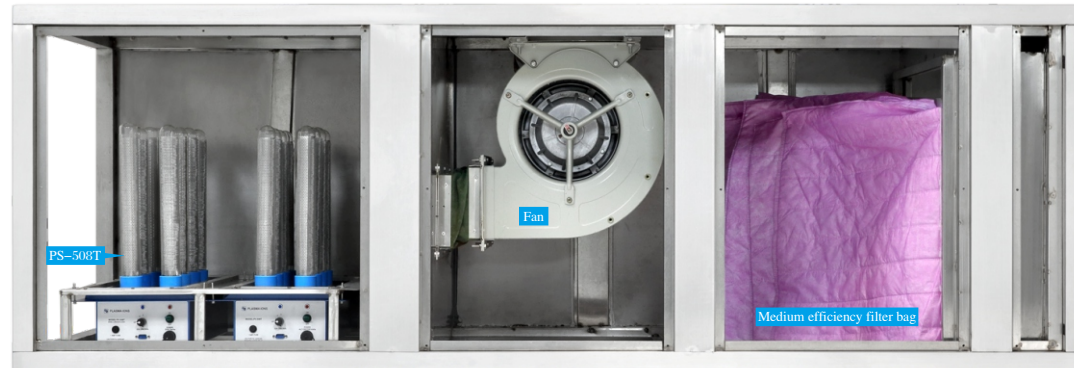
Size:1040*750*230mm



Fan Coil System

PS-508T (Vertical section)

- Adapted air volume:12800 CFM
- Voltage:120V/240V AC
- Power consumption:47 W
- Application area:800m²
- Size:545*280*450mm



Plasma fresh air pipeline disinfection system (including air cabinet: AHU or PAU)

NO.2 Wall Mounted Series

PS-400T1

- Air volume: 15m³/h
- Voltage: 12V/24V DC
- Power consumption: 6W
- Application area: 5~15m²
- Size: 195*100*60mm



PS-500T1

- Air volume: 0~60m³/h
- Voltage: 12V/24V DC
- Power consumption: 7W
- Application area: 20~30m²
- Size: 260*175*60mm



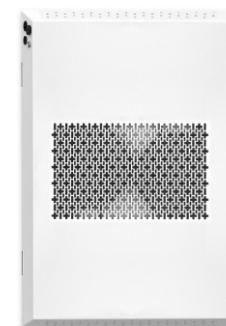
PS-501TX

- Air volume: 0~128m³/h
- Voltage: 12V/24V DC
- Power consumption: 7W
- Application area: 30~50m²
- Size: 180*100*240mm



PS-500T2

- Air volume: 0~220m³/h
- Voltage: 12V/24V DC
- Power consumption: 26W
- Application area: 50~100m²
- Size: 500*340*60mm



PS-500T3

- Air volume:0~138m³/h
- Voltage:12V/24V DC
- Power consumption:45W
- Application area:60~80m²
- Size:355*235*100mm



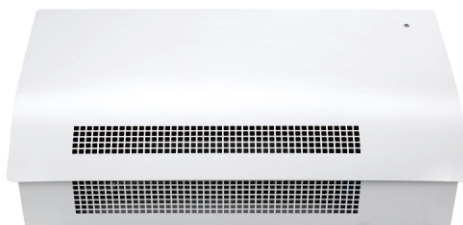
PS-501TR

- Air volume:0~460m³/h
- Voltage:120V/240V AC
- Power consumption:72W
- Application area:50~100m²
- Size:425*125*320mm



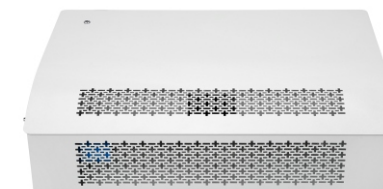
PS-501TY

- Air volume:0~850m³/h
- Voltage:120V/240V AC
- Power consumption:70W
- Application area:50~150m²
- Size:730*180*405mm



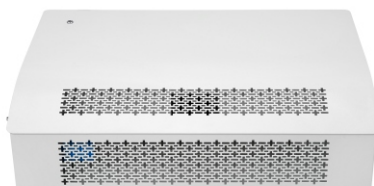
PS-501TW

- Air volume:200m³/h
- Voltage:120V/240V AC
- Power consumption:77W
- Application area:50~100m²
- Size:490*125*342mm



PS-501TW-UV

- Air volume:200m³/h
- Voltage:120V/240V AC
- Power consumption:85W
- Application area:50~100m²
- Size:490*125*342mm



NO.3 Movable Series

PS-501T2

- Air volume: 0~850m³/h
- Voltage: 120V/240V AC
- Power consumption: 60W
- Application area: 50~100m²
- Size: 370*255*865mm



PS-501TC

- Air volume: 200m³/h*2
- Voltage: 120V/240V AC
- Power consumption: 180W
- Size: 1320*980*2100mm



PS-501T6

- Air volume: 1200/1400/
1600/1800m³/h
- Voltage: 120V/240V AC
- Power consumption: 299W
- Application area: 200~300m²
- Size: 630*383*1760mm



NO.4 Ceiling Series

PS-501T1

- Air volume: 0~420m³/h
- Voltage: 120V/240V AC
- Power consumption: 50W
- Application area: 50~100m²
- Size: 625*625*210mm



PS-501T1-UV

- Air volume: 0~420m³/h
- Voltage: 120V/240V AC
- Power consumption: 58W
- Application area: 50~100m²
- Size: 625*625*210mm



PS-501T3

- Air volume: 0~1000m³/h
- Voltage: 120V/240V AC
- Power consumption: 150W
- Application area: 80~150m²
- Size: 730*450*280mm



PS-501T4

- Air volume: 0~1200m³/h
- Voltage: 120V/240V AC
- Power consumption: 220W
- Application area: 200~300m²
- Size: 1205*625*240mm



PS-501T5

- Air volume:1200/1400/1600/1800m³/h
- Voltage:120V/240V AC
- Power consumption:200W
- Application area:200~300m²
- Size:1205*625*330mm



NO.5 Portable Series

PS-300T

- Weight:150g
- Voltage:DC 5V
- Power consumption:1W
- Application area:3~15m²
- Size:96*25*50mm



PS-300T1

- Air volume:15m³/h
- Voltage:DC 5V
- Power consumption:5W
- Application area:10~20m²
- Size: Φ 70*200mm



PS-300T2

- Air volume:30~50m³/h
- Voltage:DC5V
- Power consumption:4W
- Weight:550g
- Application area:10~20m²
- Size: Φ 120*194mm



PS-300T3

- Air volume:30m³/h
- Voltage:DC5V
- Power consumption:10Wmax
- Weight:650g
- Application area:20~30m²
- Size:125*30*300mm



PS-400T2

Floor Air Purifier

- Air volume:500m³/h
- Voltage:120V/240V AC
- Power consumption:30W
- Application area:100m²
- Size: Φ 240*820mm



PS-501T4S

- Air volume:0~138m³/h
- Voltage:120V/240V AC
- Power consumption:51W
- Application area:50~100m²
- Size:530*160*225mm



PS-501TV

- Air volume:0~138m³/h
- Voltage:12V/24V DC
- Power consumption:50W
- Application area:50~80m²
- Size:300*104*402mm



NO.6

Related products

PS-501

Ion quantity controller

- Shell material:ABS
- Voltage:120V/240V AC
- Power consumption:3W
- Weight:450g
- Size:135*90*50mm



PS-502

Wind pressure switch

- Shell material:ABS
- Voltage:120V/240V AC
- Power consumption:4W
- Weight:650g
- Size:160*83*65mm



PS-503

Air quality detector

- Shell material:ABS
- Voltage:DC5V
- Power consumption:4W
- Weight:225g
- Size:110*50*80mm



APP

Version: 3.0
Operating System: Android/IOS
Software name: All Purify

[names of other versions are automatically generated following the system language]

System support languages: Multilingual (customizable)

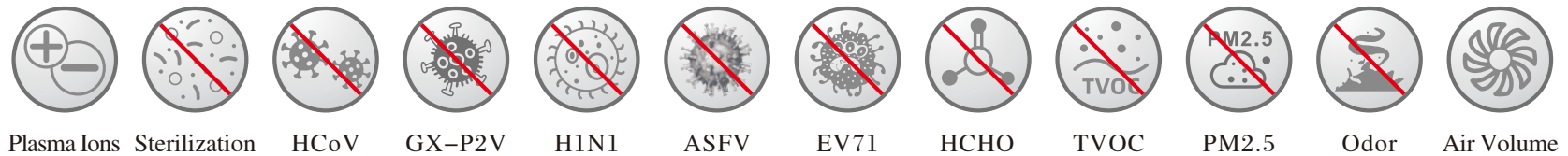
Currently supported languages: Simplified Chinese/
Traditional Chinese/English/French/German/Russian/
Japanese/Italian/Korean/Spanish/Arabic/Czech/Dutch/
Polish/Hungarian/Vietnamese/Swedish/etc



All Purify



Scan to
download APP



The first to obtain certification from authoritative organizations. Which can effectively prevent and kill coronavirus(HCoV), H1N1 and EV71.

Thank You