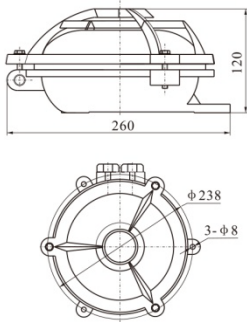
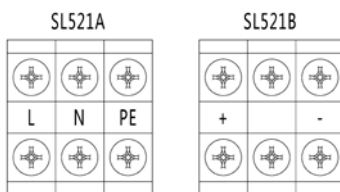




Mounting Dimension ( Unit : mm )



Wiring Diagram



Application



### Application

Applied to the illumination for wet places in deck, sidewalk in ships or cabin.

### Functions and Features

The structure of light is simple, has good waterproof function, can be used in kinds of places and bad environment.

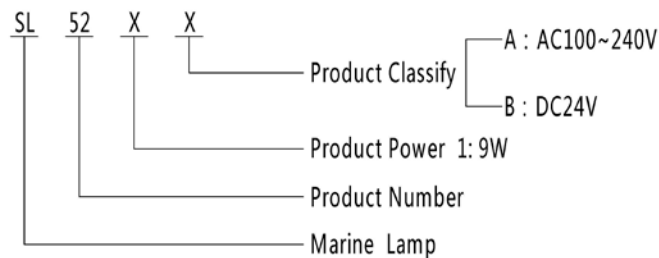
### Standard

- GB7000.1-2002 《General safety requirement and test for the lamps》
- GB7000 .10-1999 《Safety requirement for fixed general lamps》
- GB/T 6994-2006 《Electrical device definitions of the ship and general provision》
- GD01-2006 《Electrical and electronics produce type approval test guide》
- GB19510.1、GB19510.14 ( Steel ship classification rules )
- CB1246-94 《Lighting lamps and lanterns of general specification of the ship》

### Specification

Operating Voltage	AC100~240V	Rated Power	8W
Temperature Color	5500K-6000K	CRI	Ra>72
Luminous efficiency	80 lm/W	LED Life Span	≥50,000hr
Operating Temperature	-40°C ~ +60°C	Storage Temperature	-40°C ~ +70°C
IP Grade	IP55	Weight	2.7kg
Material	Housing : Tempered Glass Shell : Aluminum Alloy		

### Model Table :



### Installation

- Make sure supply voltage conform to the lamps rated voltage;
- Use 2\*M6 Screws to fix the mounting surface, which should be smooth and with enough mechanical strength.
- Equipped with terminals inside the lamp, connect power input and output line separately.
- Input line as shown in the wiring diagram.

### Notice

- It is normal which temperature rise slightly when the product working .
- Do not open any part to avoid any dangers when it works.
- It is sealing structure, do not disassemble the lamp by non-professional people. Otherwise, the warranty is invalid.