

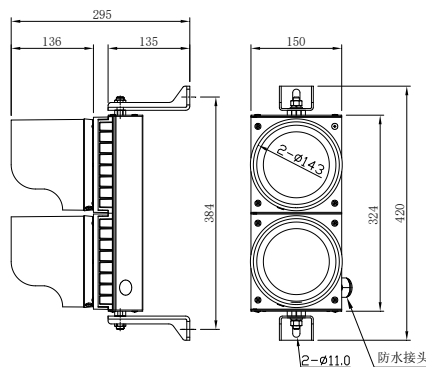
## 2-light combination



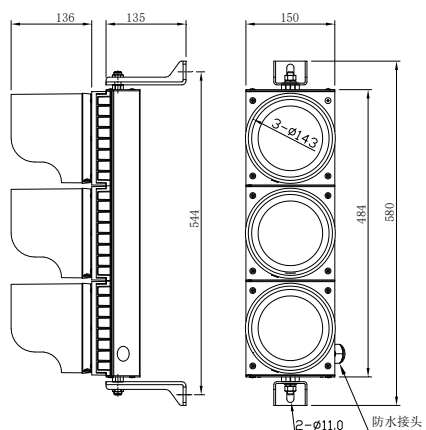
### 3-light combination



Mounting dimension (unit: mm)



## 2-light combination



### 3-light combination

## Application

This product is used to indicate the conductor power, specially designed for overhead crane, gantry cranes etc.

## Main features and functions

- Aluminum enclosure with powdercoat paint finishes, durable and reliable, corrosion resistant, light weight.
- LED light source, long life time.
- Multiple seals with silicon rubber, high ingress protection grade.
- Easy to mount, lamp numbers and colors are flexible combination.

## Specification

Rated voltage	DV24V/AC110V/AC220V/AC380V/AC460V	Frequency	50Hz~60Hz
Rated Power Consumption	<8W (single light)	Light Color	Red, Yellow, Green, Blue (optional)
Visible distance	>300m	LEDs life time	100,000h
Operating mode	steady burning (flash can be customized)	Wiring	Y type connection
Operating Temperature	-30°C ~ +70°C	IP Rate	IP65
Ambient humidity	10% ~ 95% (non condensation)	Material	Aluminum alloy / Plastic (optional)
Mount type	Horizontal mount / Vertical mount		

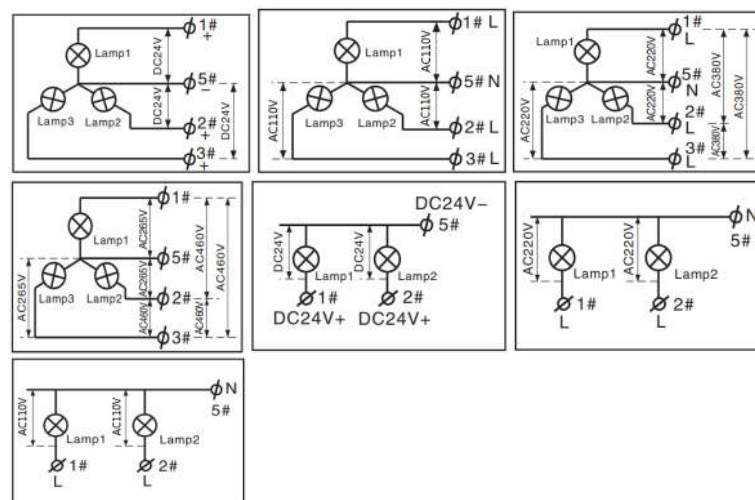
## Installation and operation

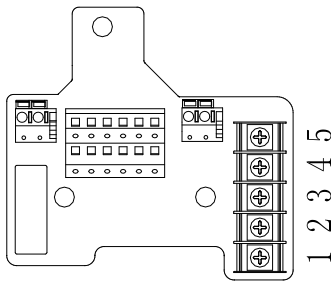
- Ensure that the input voltage is correct.
- Fix product to mount face by using four nos. M10 screws (not provided), ensure mount face is flat and has enough mechanical strength.
- Remove 4 nos. screws on enclosure to open the product, refer wiring connection diagram to connect wires to terminal blocks, close the product and fix the screws after wiring.
- Ensure cable connection is correct before power on.

### Model selection table

Model	Color (from top to bottom)	Lamp diameter	Cable gland	Weight (KG)
2-light combination	Red+Green	118mm	Metal	4.0
	Red+Yellow	118mm		
	Green+Yellow	118mm		
2-light combination	Yellow+Green+Red	118mm	Metal	5.7
	Green+Red+Yellow	118mm		
	Red +Yellow+Green	118mm		
	Green+Red+Blue	118mm		

## Wiring connection



**Wiring****Application****Caution**

- Ensure cable connection is correct.
- While product is operating, temperature rise is normal phenomenon.
- While product is operating, do not open products, prevent any dangers.
- The product is sealed structure, warranty is terminated if unauthorized people maintain the product.
- Read these instructions completely and carefully.