



RST Refillable Traps



RST refillable trap

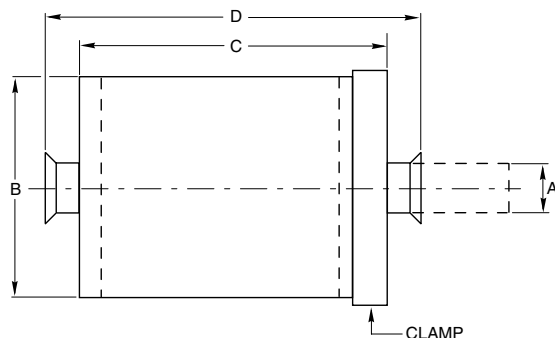
The RST traps are made from 304 stainless steel, and when specified with stainless steel filtration media, are fully suited for corrosive applications. The media is inserted directly into the trap. This ensures direct contact with the trap walls. There is no oil path between the trap wall and the retainer gasket to reduce trap effectiveness.

Advantages to the User

- Refillable
- Two filtration media
- Easy to clean
- Easy to recharge
- KF flanges

Applications

Foreline traps are utilized whenever long-term effects of mechanical pump oil back migration into the pumped chamber or higher vacuum (oil diffusion) pump may be undesirable. Copper wool for standard applications and stainless steel wool for corrosive applications are available.



Model	Flange	Dimension	ø A	ø B	C	D
RST16KF	DN 16 KF both ends	mm	KF 16	63	83	133
		in.		2 1/2	3 1/4	5 1/4
RST25KF	DN 25 KF both ends	mm	KF 25	76	108	171
		in.		3	4 1/4	6 3/4
RST40KF	DN 40 KF both ends	mm	KF 40	102	102	178
		in.		4	4	7

Dimensional drawing for the RST

Technical Data		RST16KF	RST25KF	RST40KF
Connection to pump	TRIVAC	D 4/8 B/BCS	D 16/25 B/BCS	D 40/65 B/BCS
Ordering Information		RST16KF	RST25KF	RST40KF
RST16KF 1.9 lb (0.9 kg)		Part No. 99 171 135	-	-
RST25KF 2.6 lb (1.2 kg)		-	Part No. 99 171 136	-
RST40KF 4.1 lb (1.9 kg)		-	-	Part No. 99 171 137
Filtering media				
Stainless steel		Part No. 99 171 141	Part No. 99 171 141	Part No. 99 171 141
RF copper		Part No. 99 171 145	Part No. 99 171 146	Part No. 99 171 147
BUNA-N gasket		Part No. 725 80 005	Part No. 725 80 006	Part No. 725 80 007