

Frequently Asked Questions

● Indicator light is not ON

● If the blue indicator light is off, check whether the power supply voltage is normal. Check whether the product input from above. This product only supports input from above and output from down.

● If the purple indicator light is off, check the position of the small red switch. Before powering on, the small red switch position should be in the "quick" position. If the small red switch is in the "compatible" position. Please adjust the small red switch to the "quick" position, and cut the main power, Wait a few seconds, then turn on the power.

● Check if the black N line is connected to the power supply neutral line N according to the wiring diagram, and not on the grounding wire PE.

● Check the antenna, the product needs to be equipped with the company's small white antenna, and the antenna is installed to ensure reliable contact.

● Note: The indicator light of this product have two colors, blue is power indicator light, and purple is WIFI indicator light. The purple indicator light is 2 fast 1 slow is WIFI connection "quick" mode; the purple light flashes evenly and continuously is WIFI connection "compatible" mode.

● Before connect power, the small red switch should be in the "quick" position. After the power is turned on, the blue indicator light will be on. Wait for 7 seconds after power-on. The purple indicator light will change to 2 fast and 1 slow. You can connect WIFI according to the process step. If can not connect WIFI for more than 3 minutes, the purple indicator light will start to flash evenly. At this time, you need to cut off the main power and reconnect to WIFI.

● WIFI connection failure

● Check if the distance of the WIFI router is too far from the circuit breaker;

● Check the WIFI router name, you can't use Chinese, you can't use special symbols;

● Check if the router name and password entered by the APP are correct.

● Check the position of the small red switch, and strictly follow the positive flow of this manual;

● Check whether there are multiple strong WIFI routers in the environment, and temporarily shut down the unwanted routers;

● Check if the WIFI router is 5G or 2.4G. This product supports 2.4G (if it is a dual-band router, please change to 2.4G);

● Check whether there are too many devices connected to the WIFI router. Some routers have an upper limit on the number of access devices;

● Check if the phone is connected to the Internet. You need to connect your phone to the local router to stay connected;

● When there is no abnormality, you can select the compatibility mode to pair with the pairing process;

● If there is no result, temporarily turn off the WIF router; prepare another mobile phone, turn on the hotspot signal of the other mobile phone, and try to pair. If possible, evaluate the status of the WFI router, or re-open the WIF router to try again.

● Note: If the multi-pairing is unsuccessful and the purple indicator light is always in the slow flashing state, the following methods can be used: 1)The device is displayed on the mobile APP but offline, and the device is deleted and re-paired. 2) Pairing with compatible mode, see the "Compatible Mode Pairing" method in this manual.

● Off line processing

● Check if the WIFI router is working properly.

● Check if the phone is connected to the Internet.

● Check if the mobile phone is equipped with anti-virus software and other software that restricts access to specific APP.

● Check whether the product is connected to the line and the power is normal.

● Check if there is a strong electromagnetic field interference source around the product;

● If there is no abnormality, exit the APP and re-login for a few minutes;

● No feedback in operating status

● Check the internal settings of the Easy Micro-Link, the button operation interface, set a device and share the user operation notification, open and check the mobile phone operating system settings, set a notification, an easy micro-link, and allow the notification to be opened;

(Android and Apple systems are slightly different)

● Other function description

● Operation feedback: mobile phone AP: control closing, after a few seconds, the APP displays the opening; or the APP shows that the opening and closing status is inconsistent with the switch, and check whether the lower terminal of the product has been tightened. It will return to normal after tightening. Incoming line type: Some users' distribution box is the lower line. If the product also adopts the down line, it will not work, the handle is stuck in the middle, and the product slides. Should be changed to the upper line, the way to the next line.

● Professional self-checking function: On the left side of the product, the internal function switch can be found through the "Professional Self-Test Window". Under normal conditions, the function switch should be kept at the upper end (the TEST position of the circuit board), and the product can be controlled normally. use. When it is necessary to test, you need professional electrician to operate, first disconnect the power supply → turn the function switch to the bottom → the product incoming line is connected to the power supply. The product will automatically open and close the cycle → automatic operation about 100 times → indicating that the product is mechanically fault-free → After the power is turned off, turn the function switch back to the upper end to resume normal use.

● Compatible mode pairing (special use case)

● Android operating system:

Turn the red switch to the "quick" position → power on the product → wait for about 7 seconds → the purple indicator light changes to 2 fast 1 slow → turn the small red switch to the "compatible" position → wait for a few seconds → the purple indicator light changes Continuous flashing → Open eWelink APP → Click "+" to add device → Click compatibility mode (AP) → Click the next step → Enter WFI name and password → Pairing → Pairing switch will switch back to "quick" position.

● ISO operating system:

(1) Turn the red switch to the "quick" position → power on the product → wait for about 7 seconds → the purple indicator light becomes 2 fast 1 slow → turn the small red switch to the "compatible" position → wait for a few seconds and a purple indication The light changes to continuous flashing → turn on the phone system settings;

(2) Open the mobile phone system settings, find the WIFI setting interface, select the signal source at the beginning of ITEAD-1000***** → enter the password "12345678" → open the easy micro-link APP after the connection is successful;

(3) Open eWelink APP → Press "+" at the bottom to add → Add device interface to select "Compatibility Mode" → Next → Enter WIFI Router Name and Password → Next to enter the connected device status.

● LAN local remote operation (special use case)

● (1) The mobile phone is connected to the router WIFI, and the device supporting the local mode function is added;

(2) After the addition is successful, the APP can use the external network to control the device normally;

(3) Unplug the router cable

(4) Wait a few minutes until the indicator light on the device turns into a flash 2 state;

(5) Click the "Enable Local Mode" button on the APP to start sending broadcasts to the device;

(6) If the local mode device is found within 60 seconds, the device enters the local mode. If it is not found, no device will enter the local mode (APP will only look for 60 seconds, if it is not found, it will not find it again)

(7) When the device enters the local mode, the indicator light of the device will become slow flashing 1;

(8) After entering the local mode, the AP mode list interface will display the "Earth" icon in the local mode device. The details interface will display the "Local Mode" text prompt, which can control the device normally.

Installation matters

● When operating and installing, be sure to carry out the power failure to ensure personal safety.

● This circuit breaker is the upper line of the upper incoming line. It does not support the lower incoming line. Please wire it correctly. Please read the front part of this manual for the wiring diagram.

● Strictly follow the wiring diagram requirements, the position of the neutral line and the live line cannot be exchanged, otherwise it will lead to inoperability or product damage. Especially for 1P and 3P products, the neutral wire must be connected to the corresponding position, as shown in the front wiring diagram of this manual.

● When pairing operation, pairing should be performed in the no-load state of the circuit breaker. To avoid product malfunction caused by load overload, short circuit, etc.

● The product adopts internal power-on mode. Please ensure that the voltage at the incoming terminal is stable and reliable. Wait for 7s for the first time, and then perform pairing operation.

● Before the product is used, the first pairing operation is required. After the pairing is completed, there is no need to re-pair the operation in subsequent use.

● If the WIFI router changes during the use of the product, the product needs to be re-paired.

● The product should be as close as possible to the WIFI router during use, as far as possible to reduce the barrier of objects such as walls and ensure signal strength. If installed in the edge of the WIFI signal coverage, as the WFI signal fluctuates and drifts, the product will be out of control offline.

● If the line suddenly loses power during normal use, the product will remain in the original closing state, and the control state will go offline. Subsequent calls, waiting for a few seconds, the product will automatically go online again without re-pairing.

● The product should be installed in an environment with protection measures such as waterproof, moisture proof, sun protection, etc., such as indoor, waterproof distribution box, etc.

● In addition to meeting the temperature range of -5°C ~ +40°C national standard, it can also operate reliably within the limit ambient temperature of -25 °C ~ +65 °C.

● When the maximum temperature is +40 °C, the relative humidity of the air does not exceed 50%. When the monthly minimum temperature of the wettest month does not exceed +25 °C, the monthly average maximum relative humidity of the month does not exceed 90%, and the daily average maximum relative humidity does not exceed 95%, and the condensation on the surface of the product due to temperature changes is taken into consideration.

● The altitude of the installation site should not exceed 2000m. It should be derated in high altitude areas. It is recommended to reduce the capacity by 10% for each 1000m elevation.

● The external magnetic field of the installation site should not exceed 5 times the earth's magnetic field in any direction.

● This product supports mobile APP control, and also supports WeChat applet, Tmall elf, small love, Google, Yamaha and other control systems.

Safety alert

● It is forbidden to use this product for illegal and criminal activities. If it leads to illegal crimes, all legal liabilities shall be borne by the user.

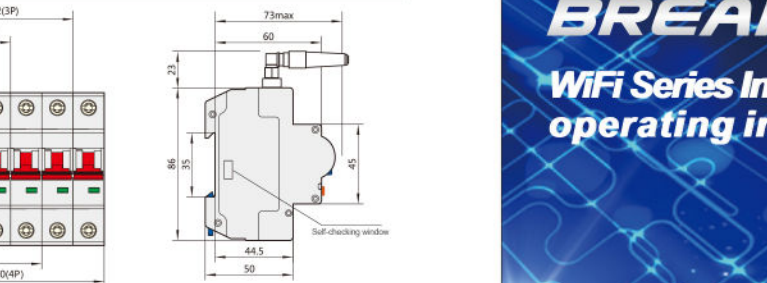
● It is forbidden to hand over the remote control equipment to children and unrelated persons to play and operate, so as to avoid the loss of personal property caused by misuse.

● It is forbidden to use the equipment in the control of the car to avoid accidental traffic accidents caused by vibration and misoperation.

Application

● The ZJSB9 series of intelligent miniature circuit breakers reflect the latest design concepts and manufacturing techniques, featuring compact size, long life, modularity, high breaking, and intelligent remote control. Applicable to AC 50Hz/60Hz, rated voltage 220V/380V, rated current to 125A, for switching on, breaking, timing, delay and distributing electric energy and carrying rated current; and can overload and short circuit in line and equipment The protection of the line and the electrical equipment in the case can also be used as the infrequent start-up and overload and short-circuit protection of the motor. More importantly, it can directly control the circuit breaker closing and opening control on the remote control device, and can be shared with other users through the extended function, timing, delay and other setting functions to meet the needs of different users.

Installation Size



Operating instructions

● This product does not protect against personal electric shock, line overvoltage and undervoltage, and equipment leakage. Please pay attention to the scope of protection.

● It is forbidden to install and disassemble the product under power supply to prevent human body electric shock and equipment short circuit.

● When wiring maintenance or avoiding wireless remote control closing, be sure to pull up the anti-missing mechanism to keep the circuit breaker in the open position.

● Strictly follow the front diagram wiring operation, the neutral line and the fire line must be connected to the corresponding position, especially the 1P and 3P products. Failure to do so will result in inoperability or product damage.

● Avoid connecting the inferior electrical load to the product for control; in order to avoid accidental burning of inferior products, resulting in property damage.

● When the circuit breaker protection trips, it is forbidden to perform the remote control closing operation without checking the line and troubleshooting. Blind lifting operations can result in personal injury or property damage.

● Considering the signal path problem of WIFI router it is forbidden to use this product in important facilities of fire control, elevator equipment, medical equipment and emergency equipment. In order to avoid accidental interruption or blockage of the WIFI signal channel, the device loses control, resulting in loss of personal property.

● In the extended functions of this product, such as delay, timing loop and other functions, there will be certain errors in time, please pay attention when using.

● If the user fails to use and construct according to the above terms, the user shall bear all consequences and legal responsibilities.



WiFi Series Intelligent Circuit Breaker

Safety Lock

- The circuit breaker has an anti-missing mechanism, the following original position.

In this case, the closing operation can be controlled normally.



- When the anti-missing mechanism is in the pull-out position, the circuit breaker will remain in the opening position, and the circuit breaker cannot be closed.



- When the anti-missing mechanism needs to be reset to the original position, please operate as shown below.



Maintenance

- Check whether the cross-sectional area of the wire is selected according to the actual current.
- Check whether the screws are loose or not tightened.
- Check the surface of the product for dust and insulation damage. If dust is found, it should be cleaned in time. If the insulation is damaged, it should be replaced in time.
- When installing, the terminal screws should be tightened, the wires are not loosened and pulled out, and the wire area is selected strictly according to the wire cross-sectional area requirements.
- Do not operate the circuit breaker with wet hands, otherwise clicks may occur.
- The operating characteristics of the circuit breaker are set by the manufacturer, and it is not allowed to disassemble and adjust at will; in order to avoid malfunction of the product.
- After purchasing, the user needs to read the manual completely in the first time. If it is found that the customer cannot be used, or if the safety environment cannot be met, please stop using it in time and contact the manufacturer for return.
- When the product is at the end of its life, do not discard it at will, and decompose it properly. The interior contains silver precious metals and the like.

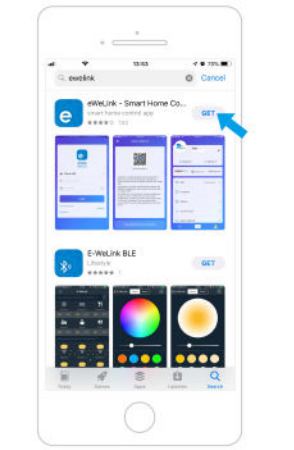
Maintenance

| |
|---|
| Meet the standard: GB/T 10963.1 IEC 60898-1 |
| Rated voltage: AC 220V (1P, 2P) / AC 400V (3P, 4P) |
| Rated frequency: 50Hz |
| Number of poles: 1P, 2P, 3P, 4P |
| Pollution level: Level 2 |
| Protection level: IP20 |
| Specified use temperature: -25 °C ~ +65 °C |
| Rack rated current: 80A, 125A |
| Rated current: 10A, 16A, 20A, 25A, 32A, 40A, 63A, 80A, 100A, 125A |
| Instantaneous tripping form: C |
| Rated short-circuit breaking capacity: 6kA |
| Rated impulse withstand voltage: 6kA |
| Mechanical life: more than 10,000 times |
| Electrical life: more than 6000 times |
| EMC performance: in line with GB/T 18449 |
| Surge withstand: in accordance with GB/T 17626.5 voltage 4.0kV |
| Salt spray bearing: in line with GB/T 2423.17 48h |
| Dust bearing: in line with GB/T 4208 8h |
| Maximum wiring capacity: 50mm ² |
| Tightening torque: 4-5Nm |



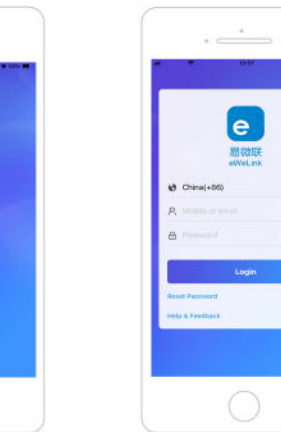
01

- Download eWeLink APP ,Search eWeLink APP in app store or Google play,also scan QR code download.



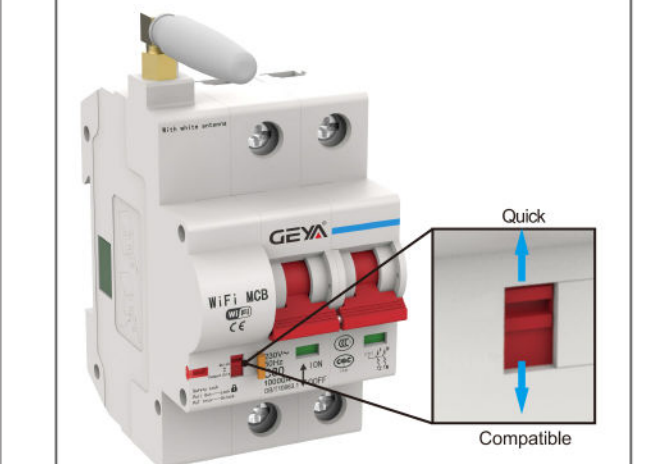
02

- Register using mobile phone number.



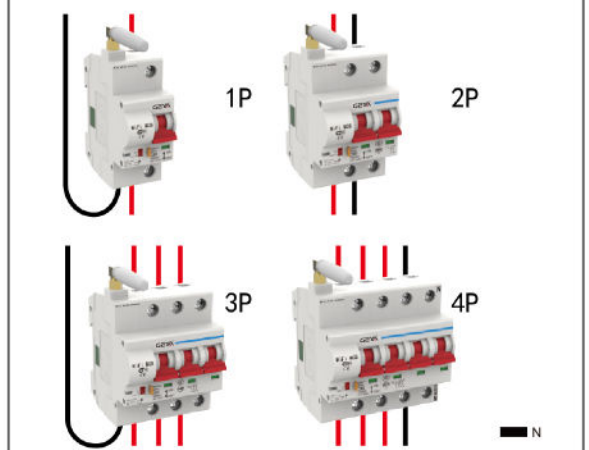
03

- Check to confirm that small red switch must be kept in "quick" position.



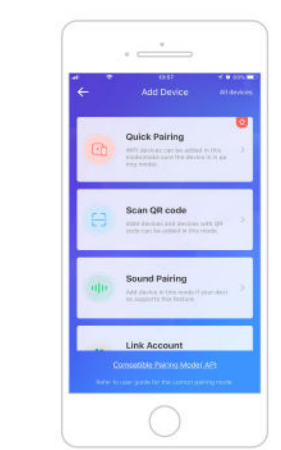
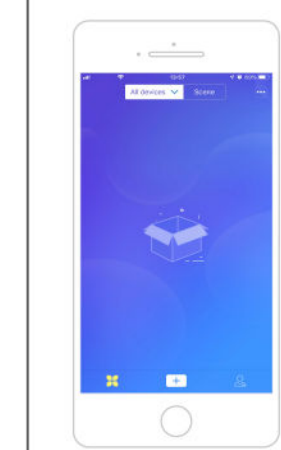
04

- Wait for about 7 seconds after turning on the power; The indicator will change to 2 quick 1 slow flash.



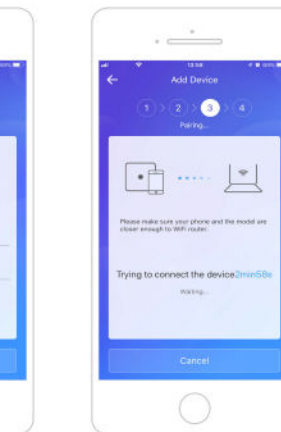
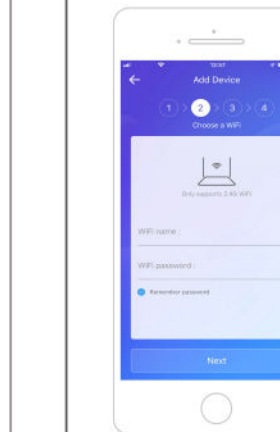
05

- Open the APP, press "+" to enter the add device interface, select the quick mode.



06

- Enter the WIFI name and password as instructed, please check correctly.Follow the instructions to wait for the pairing process.



07

- After the pairing is successful, you can work by taking a name (Note: after the pairing is successful, the small red switch must be in the "quick" position)

