

■ 由于技术进步，我们将适时改进产品外观及技术参数。产品实物指标以正式文件为准，恕不另行通知。谢谢！
For technology improvement, We will revise technical parameter and appearance properly without prior notice to the user. Take formal document as standard for products. Thank you!

永成风机走向世界 Yongcheng blower goes to the world



广东永成机电科技有限公司
GUANGDONG YONGCHENG ELECTRICAL TECHNOLOGY CO., LTD

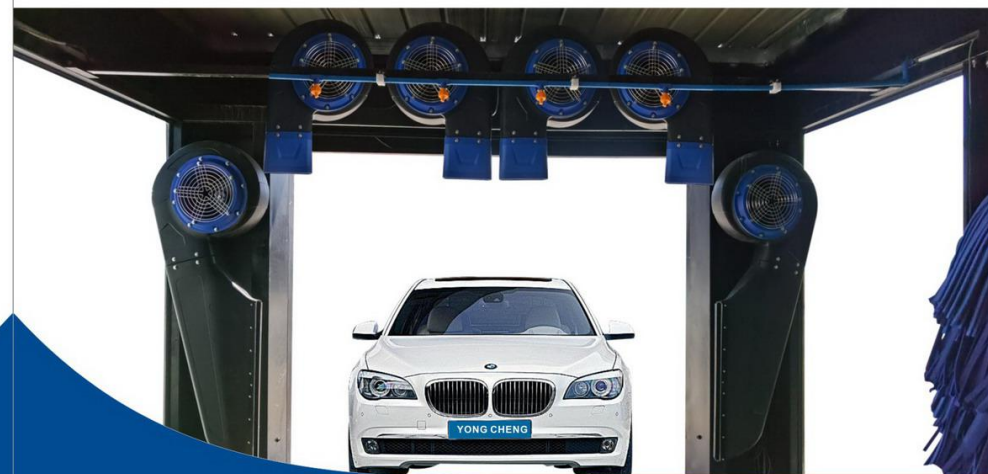
地址：广东省佛山市南海区大沥镇盐步横江崧江工业区
ADD: No.28 Songjiang Industrial Area, Hengjiang, Yanbu, Dali,
Nanhai District, Foshan City, Guangdong Province, 528247 China.
网址: <https://skybbus.1688.com>

国际营销中心 International Marketing Center:
Contact person: Jack Su
Mobile: +86-18042856948(whatsapp & wechat)
Tel: +86-757-85786998 Fax: +86-757-85787889
Website: www.ycblowers.com
Email: marketing@ycblowers.com



30多年，我们一直专注于风机
Focus on producing blowers more than 30 years.

Auto Car Wash Blower 洗车风机系列



2021 产品
CATALOG 目录

精工
智造

广东永成机电科技有限公司
GUANGDONG YONGCHENG ELECTRICAL TECHNOLOGY CO., LTD

COMPANY PROFILE

公司简介



YONGCHENG

广东永成机电科技有限公司是一家专业从事电机与风机系列产品研发、生产及销售的现代化企业，位于世界制造业之都——广东佛山。公司始创于1989年，占地面积12000平方米。经过30多年艰苦的奋斗，以优质的产品成为风机行业的领先企业。

公司始终高度专注开发专利技术、发掘培养人才，打造高性价比的行业产品。专业的研发团队，保证技术不断创新，产品引领市场潮流。公司产品广泛应用于智能洗车机、厨具设备、通风设备、激光雕刻设备、木工机械设备、注塑行业以及气模广告行业，并能为尊贵的客户订造专业风机使用方案的产品，以满足不同市场的需求。

公司以严格的品质管理、完善的服务体系为客户提供高品质的产品。永成电机将以热情、耐心、专业的态度与国内外客户携手合作，共同进步，共同发展。

GUANGDONG YONGCHENG ELECTRICAL TECHNOLOGY CO.,LTD is a modern enterprise specializing in R&D, production and sales of motor and blower series products. It is located in Foshan, Guangdong, the manufacturing center of the world. Our company was founded in 1989 and covers an area of 12,000 square meters. After more than 30 years of hard work, we have become a leading company in the blower industry with high-quality products. We are always focused on developing patented technologies, exploring and training talents, and creating cost-effective industry products. The professional R&D team ensures continuous technological innovation and products lead the market trend.

Our products are widely used in smart automatic car washing machines, kitchen equipment, ventilation equipment, laser engraving equipment, woodworking machinery and equipment, injection molding industry and inflatable advertising industry, and offer customize products with professional blower usage solutions for distinguished customers to meet different markets Demand.

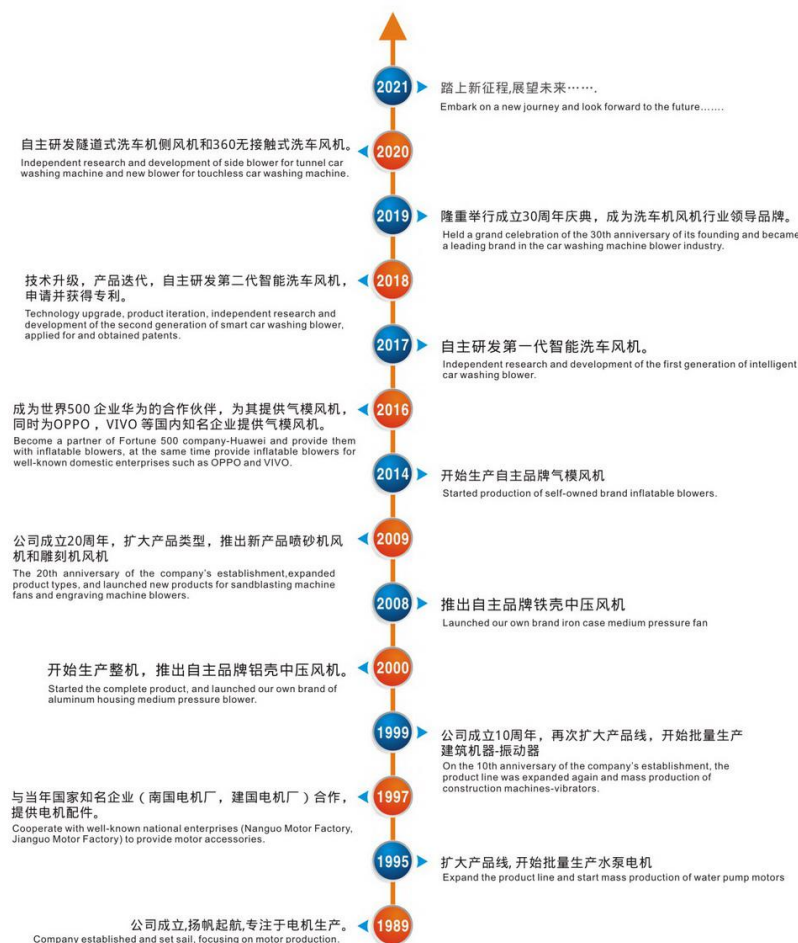
We provide high-quality products with strict quality management and perfect service. Yongcheng will cooperate with customers at home and abroad with enthusiasm, patience and professional attitude to make progress and development together.

COMPANY HISTORY 永不止步 成就未来

发展 . 历程

永成30多年始终坚守在电机行业，专注风机生产，保持热爱，践行现代工匠精神，弘扬中国制造。不忘初心，继续前行。

Yongcheng has always been in the motor industry for more than 30 years, focusing on blower production, maintaining love, Practice the spirit of modern craftsman and carry forward "made in China". Never forget why we started and move on. started and move on.



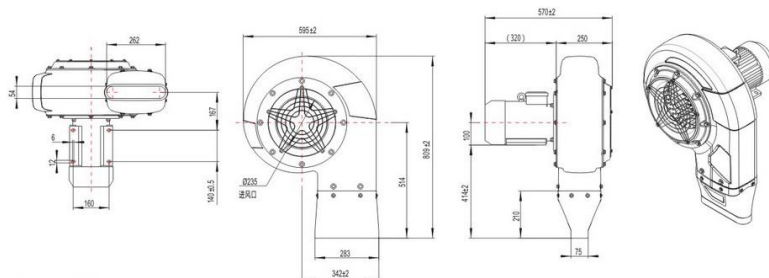


3KW二代洗车机风机
Auto Car Wash Blower

产品特性: PRODUCT FEATURES

- 1、进口PE塑料外壳，不生锈，强度高，抗老化，稳定性好。
- 2、合理的阿基米德螺旋出风，对比传统Q型，风效更高，动压强，风量大。
- 3、电机核心部件，防水等级高，防泡水，防喷射高压水渍进入内部，保护了电气性能。
- 4、同比传统，叶轮采用1.5倍厚度叶片，外加防锈表面处理，叶轮耐久性好，稳定性好。
- 5、安装便捷，维护简单，易于操作。
- 6、噪音低、振动小，进出风安全防护高。
- 7、优异的价格定位，配套强大的售后服务保障。

1. imported PE plastic shell, no rust, high strength, anti-aging, good stability.
2. Reasonable Archimedes spiral air, compared with the traditional Q-type, the air efficiency is higher, the dynamic pressure and the air volume are larger.
3. The core part of the motor, with high waterproof grade, can prevent water from soaking and spraying, and can prevent high-pressure water from entering the interior, thus protecting the electrical performance.
4. Compared with the traditional impeller, the impeller adopts 1.5 times thickness blade, plus antirust surface treatment, which has high durability and good stability.
5. It is easy to install, maintain and operate.
6. Low noise, small vibration, high safety protection of wind in and out.
7. Excellent price positioning, supporting strong after-sales service guarantee.



技术参数

型号 Model	电压频率(V/Hz) Voltage/Frequency	相数(Φ) Phase	功率(W) Power	电流(A) Current	转速(rpm) Speed	风压(Pa) Pressure	风量(m³/h) Volume	整机噪音(dB(A)) Noise
AWD-595-30	380V/50Hz	3	3000	12.5	2900	1800	3750	< 90 (1.5m)

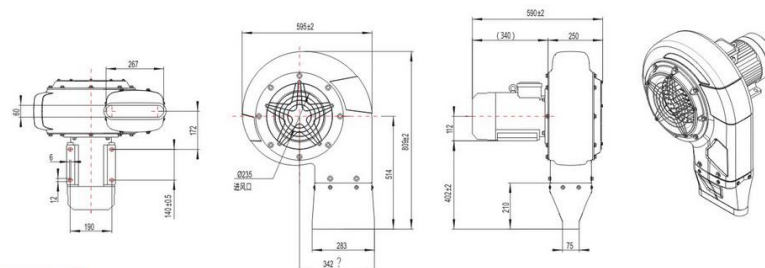


5.5KW二代洗车机风机
Auto Car Wash Blower

产品特性: PRODUCT FEATURES

- 1、进口PE塑料外壳，不生锈，强度高，抗老化，稳定性好。
- 2、合理的阿基米德螺旋出风，对比传统Q型，风效更高，动压强，风量大。
- 3、电机核心部件，防水等级高，防泡水，防喷射高压水渍进入内部，保护了电气性能。
- 4、同比传统，叶轮采用1.5倍厚度叶片，外加防锈表面处理，叶轮耐久性好，稳定性好。
- 5、安装便捷，维护简单，易于操作。
- 6、噪音低、振动小，进出风安全防护高。
- 7、优异的价格定位，配套强大的售后服务保障。

1. imported PE plastic shell, no rust, high strength, anti-aging, good stability.
2. Reasonable Archimedes spiral air, compared with the traditional Q-type, the air efficiency is higher, the dynamic pressure and the air volume are larger.
3. The core part of the motor, with high waterproof grade, can prevent water from soaking and spraying, and can prevent high-pressure water from entering the interior, thus protecting the electrical performance.
4. Compared with the traditional impeller, the impeller adopts 1.5 times thickness blade, plus antirust surface treatment, which has high durability and good stability.
5. It is easy to install, maintain and operate.
6. Low noise, small vibration, high safety protection of wind in and out.
7. Excellent price positioning, supporting strong after-sales service guarantee.



技术参数

型号 Model	电压频率(V/Hz) Voltage/Frequency	相数(Φ) Phase	功率(W) Power	电流(A) Current	转速(rpm) Speed	风压(Pa) Pressure	风量(m³/h) Volume	整机噪音(dB(A)) Noise
AWD-595-55	380V/50Hz	3	5500	17.5	2900	2500	4000	< 92 (1.5m)



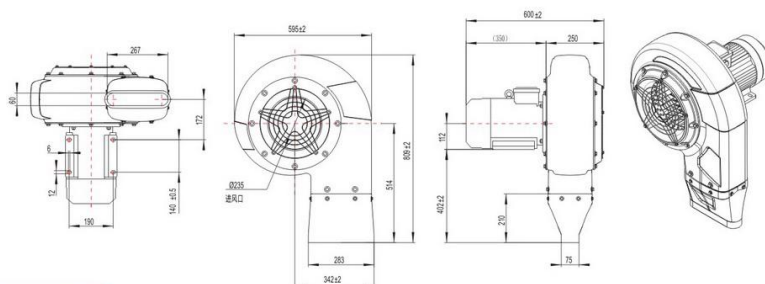


7.5KW二代洗车机风机 Auto Car Wash Blower

产品特性: PRODUCT FEATURES

- 1、进口PE塑料外壳，不生锈，强度高，抗老化，稳定性好。
- 2、合理的阿基米德螺旋出风，对比传统Q型，风效更高，动压强，风量大。
- 3、电机核心部件，防水等级高，防泡水，防喷射高压水渍进入内部，保护了电气性能。
- 4、同比传统，叶轮采用1.5倍厚度叶片，外加防锈表面处理，叶轮耐久性好，稳定性好。
- 5、安装便捷，维护简单，易于操作。
- 6、噪音低、振动小，进出风安全防护高。
- 7、优异的价格定位，配套强大的售后服务保障。

1. imported PE plastic shell, no rust, high strength, anti-aging, good stability.
2. Reasonable Archimedes spiral air, compared with the traditional Q-type, the air efficiency is higher, the dynamic pressure and the air volume are larger.
3. The core part of the motor, with high waterproof grade, can prevent water from soaking and spraying, and can prevent high-pressure water from entering the interior, thus protecting the electrical performance.
4. Compared with the traditional impeller, the impeller adopts 1.5 times thickness blade, plus antirust surface treatment, which has high durability and good stability.
5. It is easy to install, maintain and operate.
6. Low noise, small vibration, high safety protection of wind in and out.
7. Excellent price positioning, supporting strong after-sales service guarantee.



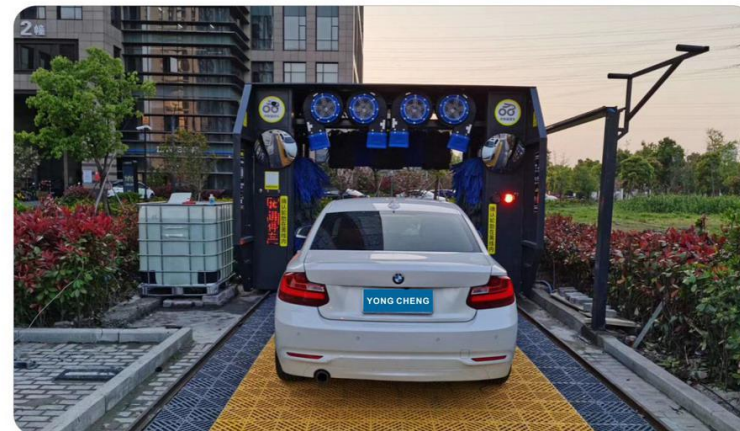
技术参数

型号 Model	电压频率(V/Hz) Voltage/Frequency	相数(Φ) Phase	功率(W) Power	电流(A) Current	转速(rpm) Speed	风压(Pa) Pressure	风量(m³/h) Volume	整机噪音(dB(A)) Noise
AWD-595-75	380V/50Hz	3	7500	21.5	2900	3000	4250	< 94 (1.5m)



应用于龙门式洗车机

Applied to rollover car washing machine



浙江客户使用案例 (Zhejiang customer use case)

应用于隧道式洗车机

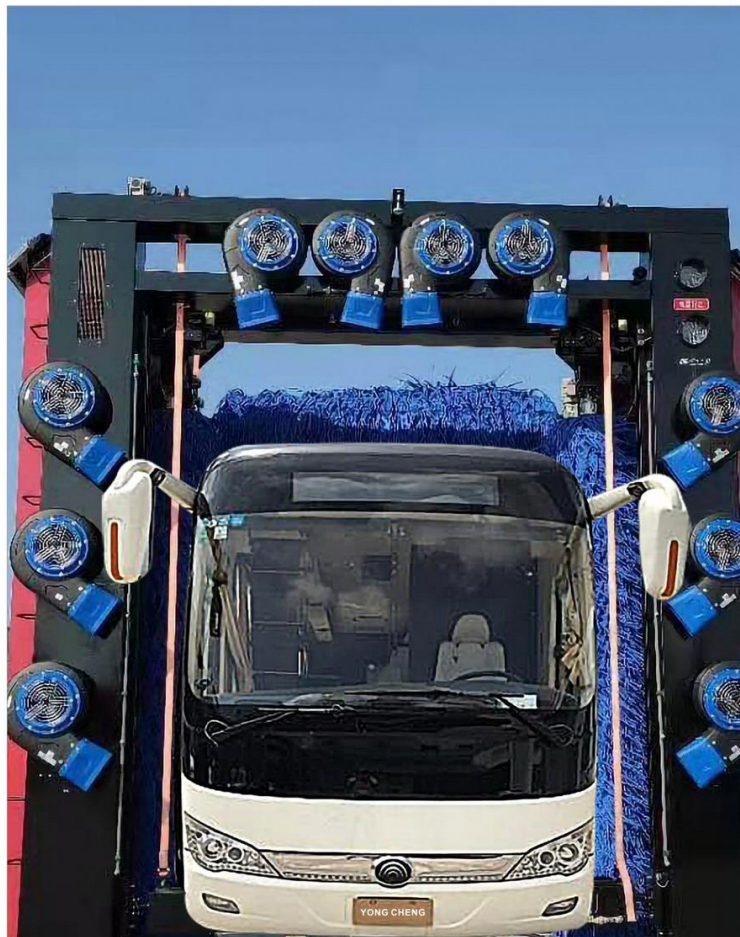
Applied to tunnel car washing machine



上海客户使用案例 (Shanghai customer use case)

应用于大巴洗车机

Applied to bus washing machine



北京客户使用案例 (Beijing customer use case)



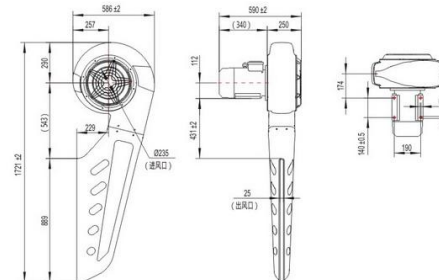
5.5KW侧风机

Side Blower for Tunnel Car Wash Machine

产品特性: PRODUCT FEATURES

- 1、体积小，节省空间，安装便捷，操作简单。
- 2、耗电少，能效高，风量风压大。
- 3、同比传统，设计成本更优，价格定位优势更大。
- 4、风鼓结构采用进口PE塑料，不生锈，强度高，抗老化，稳定性好。
- 5、电机核心部件，防水等级高，防泡水，防喷射高压水渍进入内部，保护了电气性能。
- 6、同比传统，叶轮采用1.5倍厚度叶片，外加防锈表面处理，叶轮耐久性好，稳定性好。
- 7、同比传统超大侧风机，售后服务强大。

1. Small size, space saving, convenient installation and simple operation.
2. Low power consumption, high energy efficiency, large air volume and pressure.
3. Compared with the traditional design, the design cost is more worrying, and the price positioning advantage is greater.
4. the wind drum structure adopts imported PE plastic, no rust, high strength, anti-aging, good stability.
5. The core part of the motor, with high waterproof grade, can prevent water from soaking and spraying, and can prevent high-pressure water from entering the interior, thus protecting the electrical performance.
6. Compared with the traditional impeller, the impeller adopts 1.5 times thickness blade, plus antirust surface treatment, which has high durability and good stability.
7. Compared with the traditional super large side fan, the after-sales service is strong.



技术参数

型号 Model	电压频率(V/Hz) Voltage/Frequency	相数(Φ) Phase	功率(W) Power	电流(A) Current	转速(rpm) Speed	风压(Pa) Pressure	风量(m³/h) Volume	整机噪音(dB(A)) Noise
SDB-595-55	380V/50Hz	3	5500	17.8	2900	2000	4750	< 92(1.5m)





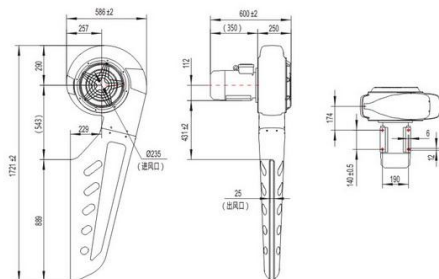
7.5KW侧风机

Side Blower for Tunnel Car Wash Machine

产品特性: PRODUCT FEATURES

- 1、体积小，节省空间，安装便捷，操作简单。
- 2、耗电少，能效高，风量风压大。
- 3、同传统，设计成本更优，价格定位优势更大。
- 4、风鼓结构采用进口PE塑料，强度高，抗老化，稳定性好。
- 5、电机核心部件，防水等级高，防泡水，防喷射高压水渍进入内部，保护了电气性能。
- 6、同传统，叶轮采用1.5倍厚度叶片，外加防锈表面处理，叶轮耐久性好，稳定性好。
- 7、同传统超大侧风机，售后服务强大。

1. Small size, space saving, convenient installation and simple operation.
2. Low power consumption, high energy efficiency, large air volume and pressure.
3. Compared with the traditional design, the design cost is more worrying, and the price positioning advantage is greater.
4. the wind drum structure adopts imported PE plastic, no rust, high strength, anti-aging, good stability.
5. The core part of the motor, with high waterproof grade, can prevent water from soaking and spraying, and can prevent high-pressure water from entering the interior, thus protecting the electrical performance.
6. Compared with the traditional impeller, the impeller adopts 1.5 times thickness blade, plus antirust surface treatment, which has high durability and good stability.
7. Compared with the traditional super large side fan, the after-sales service is strong.



技术参数

型号 Model	电压频率(V/Hz) Voltage/Frequency	相数(Φ) Phase	功率(W) Power	电流(A) Current	转速(rpm) Speed	风压(Pa) Pressure	风量(m³/h) Volume	整机噪音(dB(A)) Noise
SDB-595-75	380V/50Hz	3	7500	21.7	2900	2500	5050	< 94 (1.5m)



顶吹风机+侧风机综合应用

Comprehensive application of top blower + side blower



俄罗斯客户使用案例 (Russian customer use case)



泰国客户实际安装使用案例 (Actual installation and use case of Thai customers)



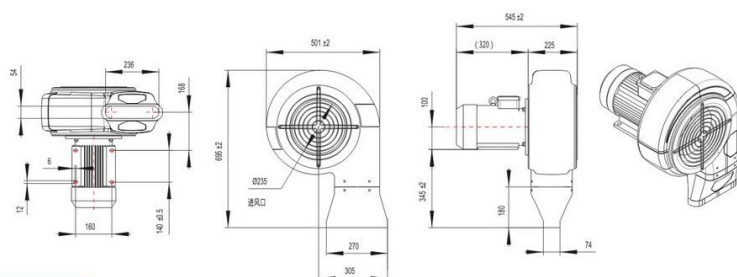
4KW无接触洗车风机

Blower for Touchless Car Wash Machine

产品特性: PRODUCT FEATURES

- 1、进口PE塑料外壳，不生锈，强度高，抗老化，稳定性好。
- 2、合理的阿基米德螺旋出风，对比传统Q型，风效更高，动压强，风量更大。
- 3、电机核心部件，防水等级高，防泡水，防喷射高压水渍进入内部，保护了电气性能。
- 4、同传统，叶轮采用1.5倍厚度叶片，外加防锈表面处理，叶轮耐久性好，稳定性好。
- 5、安装便捷，维护简单，易于操作。
- 6、噪音低、振动小，进出风安全防护高。
- 7、优异的价格定位，配套强大的售后服务保障。

1. imported PE plastic shell, no rust, high strength, anti-aging, good stability.
2. Reasonable Archimedes spiral air, compared with the traditional Q-type, the air efficiency is higher, the dynamic pressure and the air volume are larger.
3. The core part of the motor, with high waterproof grade, can prevent water from soaking and spraying, and can prevent high-pressure water from entering the interior, thus protecting the electrical performance.
4. Compared with the traditional impeller, the impeller adopts 1.5 times thickness blade, plus antirust surface treatment, which has high durability and good stability.
5. It is easy to install, maintain and operate.
6. Low noise, small vibration, high safety protection of wind in and out.
7. Excellent price positioning, supporting strong after-sales service guarantee.



技术参数

型号 Model	电压频率(V/Hz) Voltage/Frequency	相数(Φ) Phase	功率(W) Power	电流(A) Current	转速(rpm) Speed	风压(Pa) Pressure	风量(m³/h) Volume	整机噪音(dB(A)) Noise
TLB-595-40	380V/50Hz	3	4000	10.5	2900	1800	3500	< 90 (1.5m)



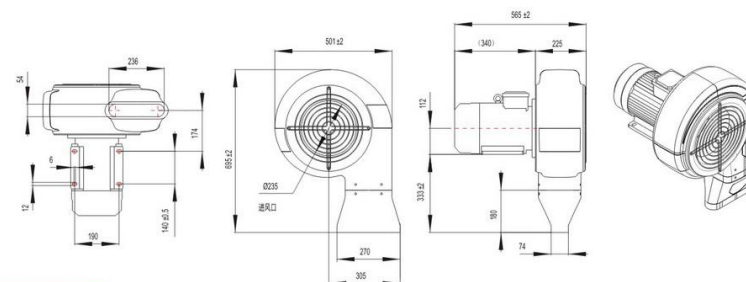
5.5KW无接触洗车风机

Blower for Touchless Car Wash Machine

产品特性: PRODUCT FEATURES

- 1、进口PE塑料外壳，不生锈，强度高，抗老化，稳定性好。
- 2、合理的阿基米德螺旋出风，对比传统Q型，风效更高，动压强，风量更大。
- 3、电机核心部件，防水等级高，防泡水，防喷射高压水渍进入内部，保护了电气性能。
- 4、同传统，叶轮采用1.5倍厚度叶片，外加防锈表面处理，叶轮耐久性好，稳定性好。
- 5、安装便捷，维护简单，易于操作。
- 6、噪音低、振动小，进出风安全防护高。
- 7、优异的价格定位，配套强大的售后服务保障。

1. imported PE plastic shell, no rust, high strength, anti-aging, good stability.
2. Reasonable Archimedes spiral air, compared with the traditional Q-type, the air efficiency is higher, the dynamic pressure and the air volume are larger.
3. The core part of the motor, with high waterproof grade, can prevent water from soaking and spraying, and can prevent high-pressure water from entering the interior, thus protecting the electrical performance.
4. Compared with the traditional impeller, the impeller adopts 1.5 times thickness blade, plus antirust surface treatment, which has high durability and good stability.
5. It is easy to install, maintain and operate.
6. Low noise, small vibration, high safety protection of wind in and out.
7. Excellent price positioning, supporting strong after-sales service guarantee.



技术参数

型号 Model	电压频率(V/Hz) Voltage/Frequency	相数(Φ) Phase	功率(W) Power	电流(A) Current	转速(rpm) Speed	风压(Pa) Pressure	风量(m³/h) Volume	整机噪音(dB(A)) Noise
TLB-595-55	380V/50Hz	3	5500	15.0	2900	2500	3900	< 92 (1.5m)



PRODUCT CERTIFICATION 永不止步 成就未来

产品·认证

企业奉行“工匠精神”，孜孜不倦的追求更高品质和社会认可，获得国内外多项认证。

The company pursues "craftsman spirit", pursues higher quality and Social recognition, and has obtained many certifications at home and Abroad.

