

Product data sheet

Specifications



EXtreme touchscreen panel, Harmony GTUX, Series Display 7\"W, Outdoor use, Rugged, Coated

HMIDT35X

Main

Range of product	Harmony GTUX
Product or component type	EXtreme touchscreen panel
Terminal type	Touchscreen display
[Us] rated supply voltage	12 V DC power supply
Supply voltage limits	10.8...28.8 V
Power consumption in W	12.5 W
Inrush current	30 A

Complementary

Touchscreen resolution	1024 x 1024
Pixel resolution	800 x 480
Display size	7 inch
Aspect ratio	4:3
Display type	Colour TFT LCD
Display resolution	800 x 480 pixels WVGA
Display colour	262144 colors
Luminance	1000 cd/m²
Touch panel	Single touch analogue resistive
Type of cooling	Natural convection
Cut-out dimensions	394 (+ 1/- 0) x 250 (+ 1/- 0) mm
Width	203.6 mm
Height	148.6 mm
Depth	37 mm
Net weight	1.3 kg

Environment

IP degree of protection	IP66f IP67f Front panel: Type 4X
Standards	UL 61010 UL 121201 Class I division 2 CSA C22.2 No 213

Product certifications	KC CE RCM EAC ATEX zone 2/22 IEC-Ex UL CSA UKCA UKEX
Ambient air temperature for operation	-30...65 °C
Ambient air temperature for storage	-30...70 °C
Pollution degree	2
Environmental characteristic	Corrosive gas free UV resistant
Relative humidity	10...90 % non-condensing
Operating altitude	2000 m
Vibration resistance	7 mm constant amplitude (f = 5...9 Hz) conforming to EN/IEC 61131-2 19.6 m/s² (f = 9...150 Hz) conforming to EN/IEC 61131-2
Shock resistance	392 m/s² conforming to EN/IEC 61131-2
Electromagnetic compatibility	Electrostatic discharge immunity test level 3 conforming to EN/IEC 61000-4-2

Packing Units

Unit Type of Package 1	PCE
Number of Units in Package 1	1
Package 1 Height	13.1 cm
Package 1 Width	21 cm
Package 1 Length	26 cm
Package 1 Weight	1.504 kg
Unit Type of Package 2	S04
Number of Units in Package 2	4
Package 2 Height	30 cm
Package 2 Width	40 cm
Package 2 Length	60 cm
Package 2 Weight	6.9 kg
Unit Type of Package 3	P12
Number of Units in Package 3	32
Package 3 Height	135 cm
Package 3 Width	80 cm
Package 3 Length	120 cm
Package 3 Weight	69.892 kg

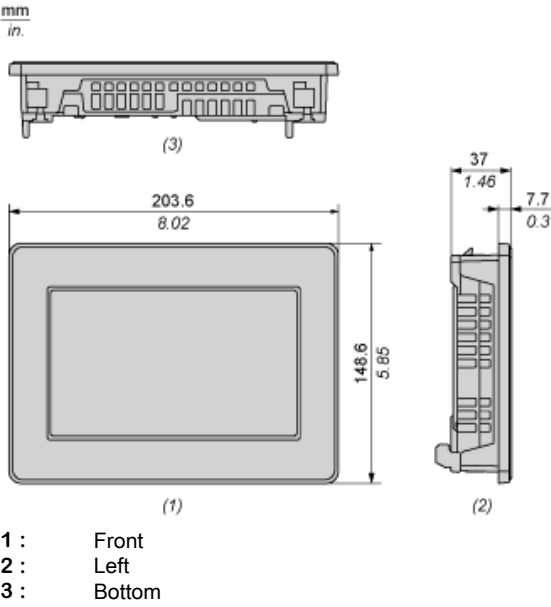
Offer Sustainability

REACH Regulation	REACH Declaration
REACH free of SVHC	Yes
EU RoHS Directive	Pro-active compliance (Product out of EU RoHS legal scope) EU RoHS Declaration

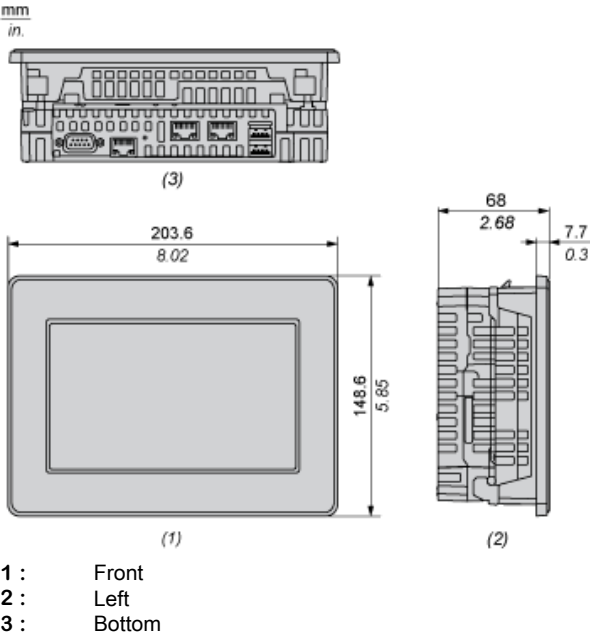
Mercury free	Yes
China RoHS Regulation	China RoHS declaration
RoHS exemption information	Yes
California proposition 65	WARNING: This product can expose you to chemicals including: Lead and lead compounds, which is known to the State of California to cause cancer and birth defects or other reproductive harm. For more information go to www.P65Warnings.ca.gov

External Dimensions

Display Unit

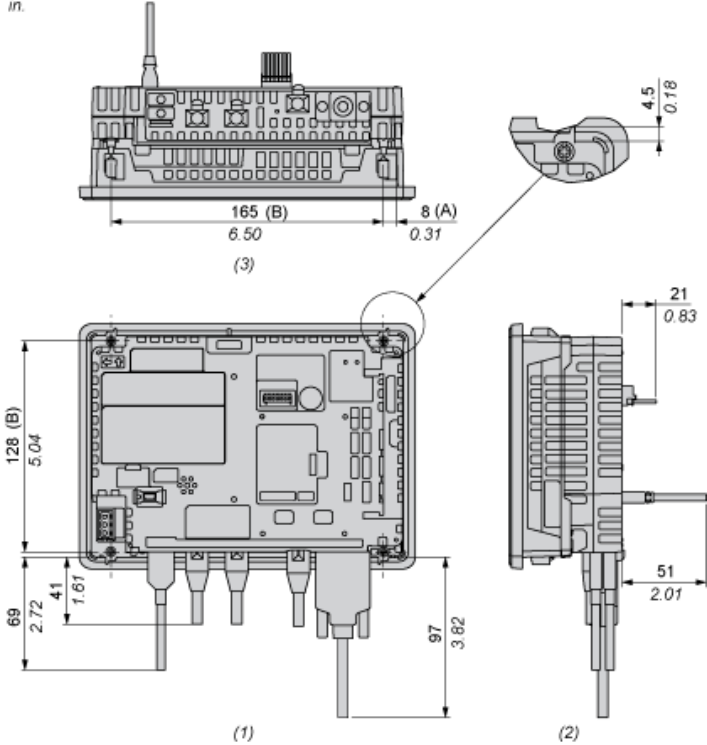


Display Unit with Box Module



Dimensions with Cables

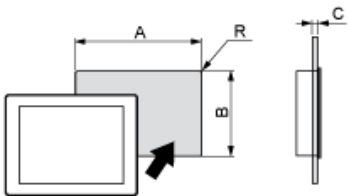
mm
in.



- (A) : Rotation area of the fastener
- (B) : Pitch of the enter of installation fastener screws
- 1 : Rear
- 2 : Right
- 3 : Bottom

Mounting and Clearance

Panel Cut Dimensions



Dimensions in mm

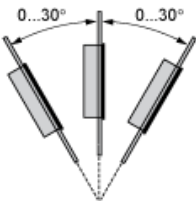
A	B	C	R
190 (+1/-0)	135 (+1/-0)	1.6...5	3 max.

Dimensions in in.

A	B	C	R
7.48 (+0.04/-0)	5.31 (+0.04/-0)	0.06...0.2	0.12 max.

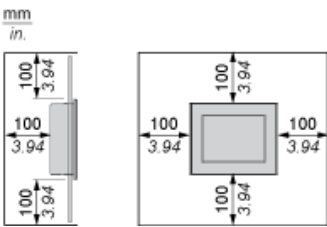
Installation Requirements

Mounting Angle



When installing this product in a slanted position, the product face should not incline more that 30°.

Clearance



Recommended replacement(s)