

Product data sheet

Specifications



EXtreme touchscreen panel, Harmony GTUX, Series Display 15\"W, Outdoor use, Rugged, Coated

HMIDT75X

Main

Range of product	Harmony GTUX
Product or component type	EXtreme touchscreen panel
Terminal type	Touchscreen display
[Us] rated supply voltage	12 V DC power supply
Supply voltage limits	10.8...28.8 V
Power consumption in W	12.5 W
Inrush current	30 A

Complementary

Touchscreen resolution	1024 x 1024
Pixel resolution	1366 x 768
Display size	15.6 inch
Aspect ratio	4:3
Display type	Colour TFT LCD
Display resolution	1366 x 768 pixels FWXGA
Display colour	262144 colors
Luminance	1000 cd/m²
Touch panel	Single touch analogue resistive
Type of cooling	Natural convection
Cut-out dimensions	394 (+ 1/- 0) x 250 (+ 1/- 0) mm
Width	408 mm
Height	264 mm
Depth	68 mm
Net weight	4.8 kg

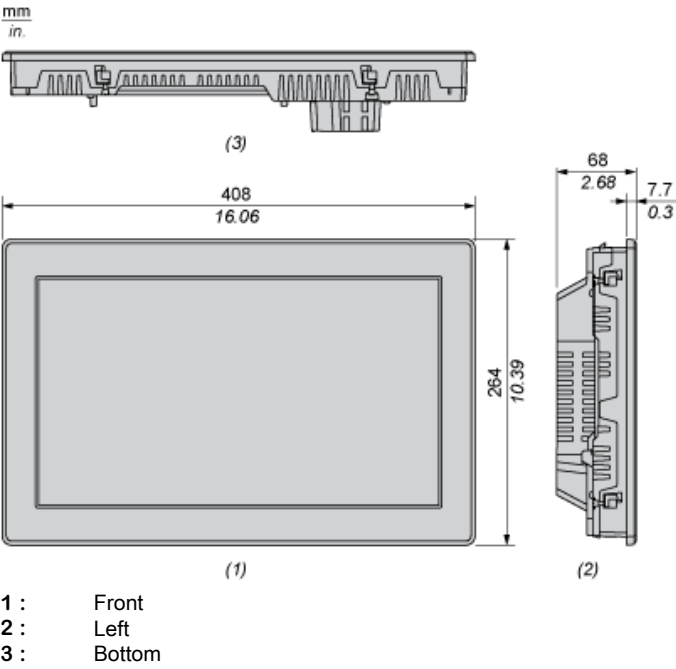
Environment

IP degree of protection	IP66f IP67f Front panel: Type 4X
Standards	UL 61010 UL 121201 CSA C22.2 No 213

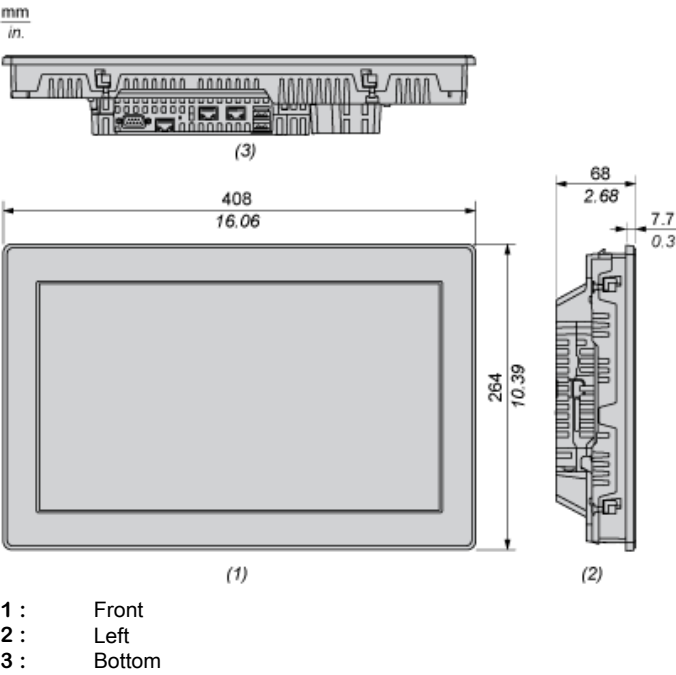
CSA C22.2 No 61010-1 IEC 61132-2	
Product certifications	KC CE RCM EAC ATEX zone 2/22 IEC-Ex UL CSA UKCA UKEX
Ambient air temperature for operation	-20...60 °C conforming to EN 61131-2
Ambient air temperature for storage	-20...60 °C
Pollution degree	2
Environmental characteristic	Corrosive gas free UV resistant
Relative humidity	10...90 % non-condensing
Operating altitude	2000 m
Vibration resistance	7 mm constant amplitude (f = 5...9 Hz) conforming to EN/IEC 61131-2 9.8 m/s² (f = 9...150 Hz) conforming to EN/IEC 61131-2
Shock resistance	392 m/s² conforming to EN/IEC 61131-2
Electromagnetic compatibility	Electrostatic discharge immunity test level 3 conforming to EN/IEC 61000-4-2
Packing Units	
Unit Type of Package 1	PCE
Number of Units in Package 1	1
Package 1 Height	18.500 cm
Package 1 Width	44.500 cm
Package 1 Length	54.000 cm
Package 1 Weight	6.642 kg
Unit Type of Package 2	P12
Number of Units in Package 2	16
Package 2 Height	105.000 cm
Package 2 Width	80.000 cm
Package 2 Length	120.000 cm
Package 2 Weight	119.000 kg
Offer Sustainability	
EU RoHS Directive	Not applicable, out of EU RoHS legal scope
WEEE	The product must be disposed on European Union markets following specific waste collection and never end up in rubbish bins
California proposition 65	WARNING: This product can expose you to chemicals including: Lead and lead compounds, which is known to the State of California to cause cancer and birth defects or other reproductive harm. For more information go to www.P65Warnings.ca.gov

External Dimensions

Display Unit

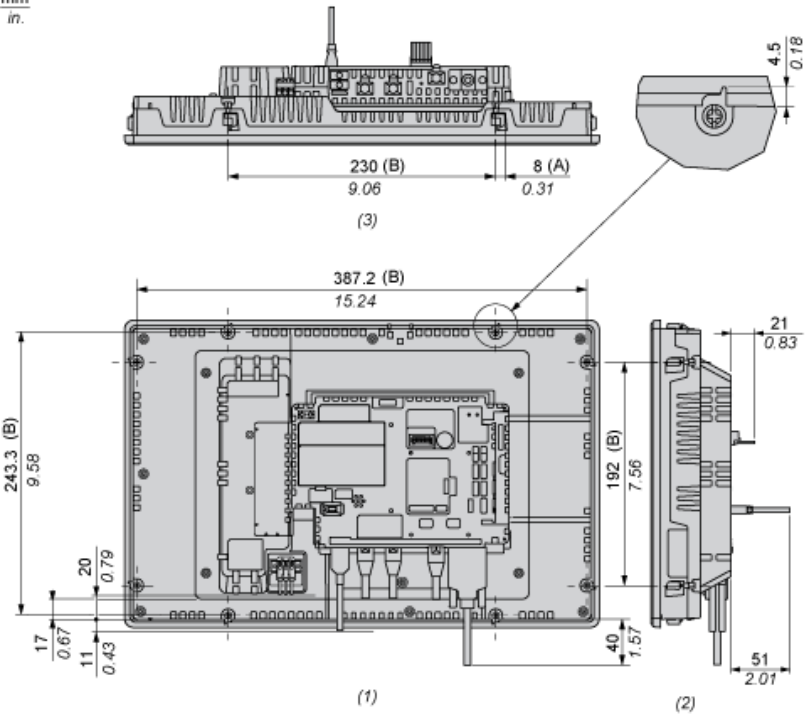


Display Unit with Box Module



Dimensions with Cables

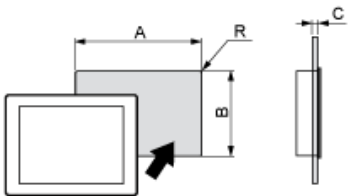
mm
in.



- (A) : Rotation area of the fastener
(B) : Pitch of the enter of installation fastener screws
1 : Rear
2 : Right
3 : Bottom

Mounting and Clearance

Panel Cut Dimensions



Dimensions in mm

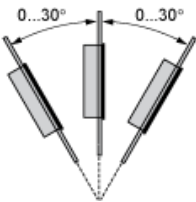
A	B	C	R
394 (+1/-0)	250 (+1/-0)	1.6...5	3 max.

Dimensions in in.

A	B	C	R
15.51 (+0.04/-0)	9.84 (+0.04/-0)	0.06...0.2	0.12 max.

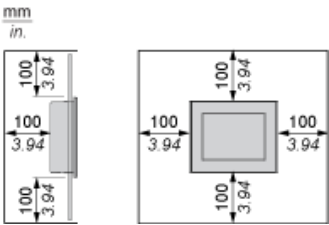
Installation Requirements

Mounting Angle



When installing this product in a slanted position, the product face should not incline more that 30°.

Clearance



Recommended replacement(s)