

# NON-CONTACT SOUND AND LIGHT TEST PEN

...

Safer without contact



# PRECISION CRAFTED

Eight functions, this is the test pen you want



Sound & Light  
Alarma



Sensitivity  
adjustment



Zero line of  
fire Recognition



Laser  
indicator



Lighting  
Function



Auto  
Shutdown



Breakpoint  
lookup



non-contact  
measurement



# NON CONTACT AC VOLTAGE SENSING

When a nearby AC voltage is sensed, a rapid beep will sound and the sensor head will flash red.



# REMINDER SYSTEM SMART ALARM

Touch free test pen

high voltage electric field  
FireWire live

low voltage electric  
field, be careful

Pointing light on/lighting on

high sensitivity/low sensitivity



# RED INDICATOR LIGHT CHECK ELECTRICITY MORE ACCURATELY

red spot positioning more precise targeting



Red Indicator Light



Flashlight lighting





# LED STRONG LIGHTING

Electricity measurement in a dark environment is more secure.

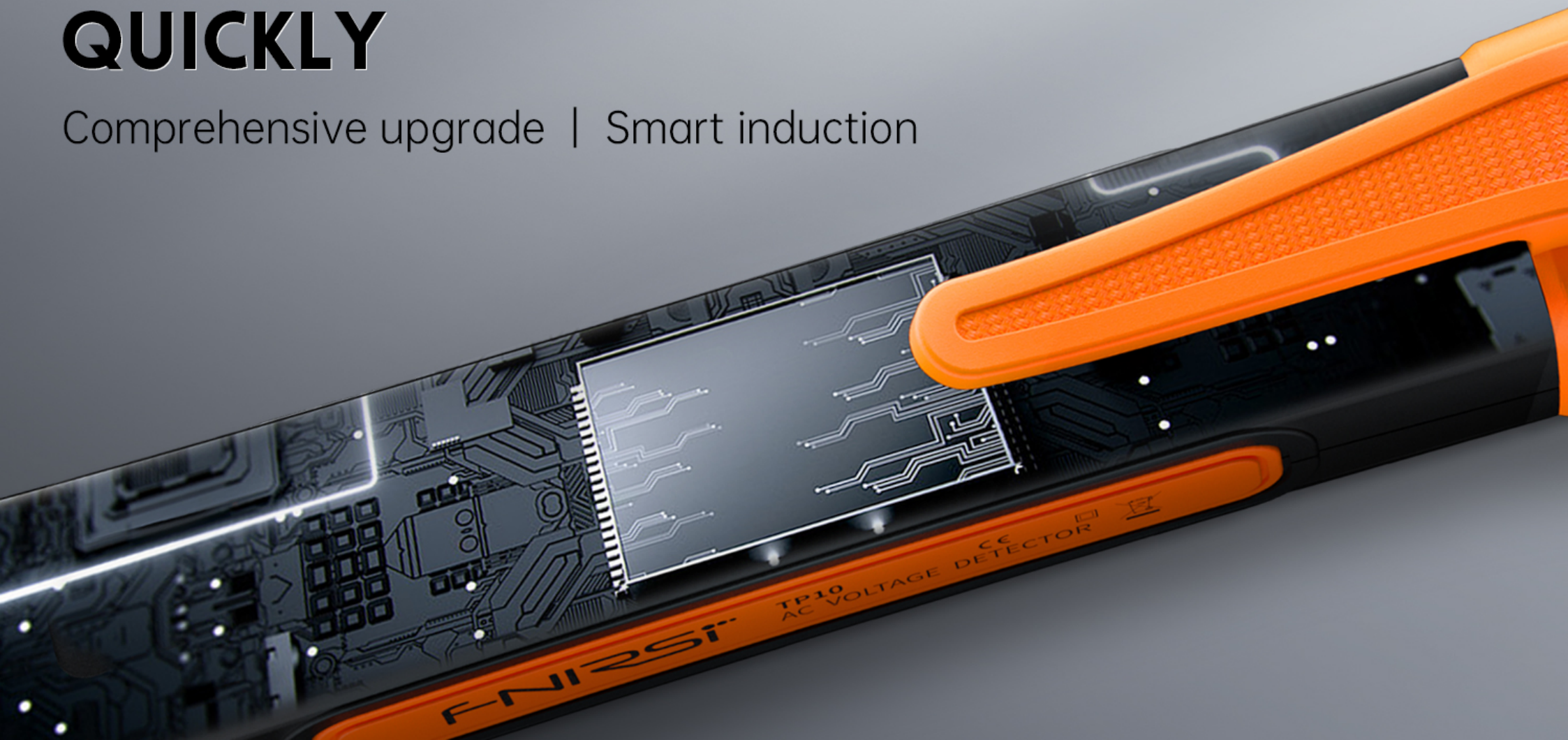


LED lighting



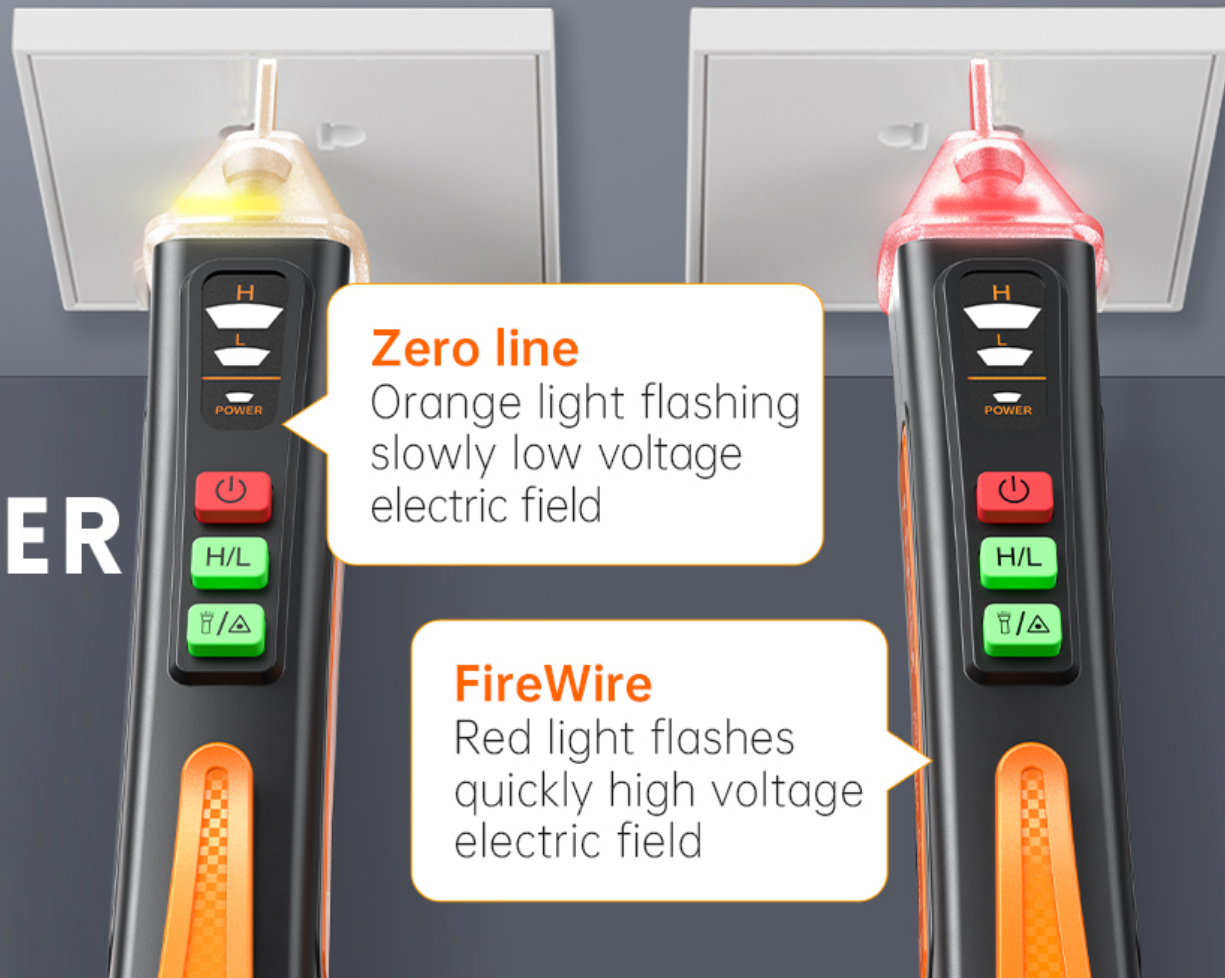
# SMART UPGRADE CHIP INDUCTION ACCURATE MEASUREMENT QUICKLY

Comprehensive upgrade | Smart induction





# ZERO FIRE WIRE IDENTIFICATION ZERO TOUCH SAFER



## Zero line

Orange light flashing  
slowly low voltage  
electric field

## FireWire

Red light flashes  
quickly high voltage  
electric field



# SENSITIVITY SWITCH

Adjust the sensitivity according to the application.

Make measurements more accurate

**H/L**

high/ low adjust, Switch to high sensitivity, Green light on.



# LINE BREAK DETECTION

---

When a breakpoint is detected along the line, the indicator light does not light up and the buzzer stops or slows down, which is the position of the breakpoint





# AUTOMATIC SHUTDOWN FUNCTION

No operation of the test pen for 5 minutes  
And no signal will automatically shut down

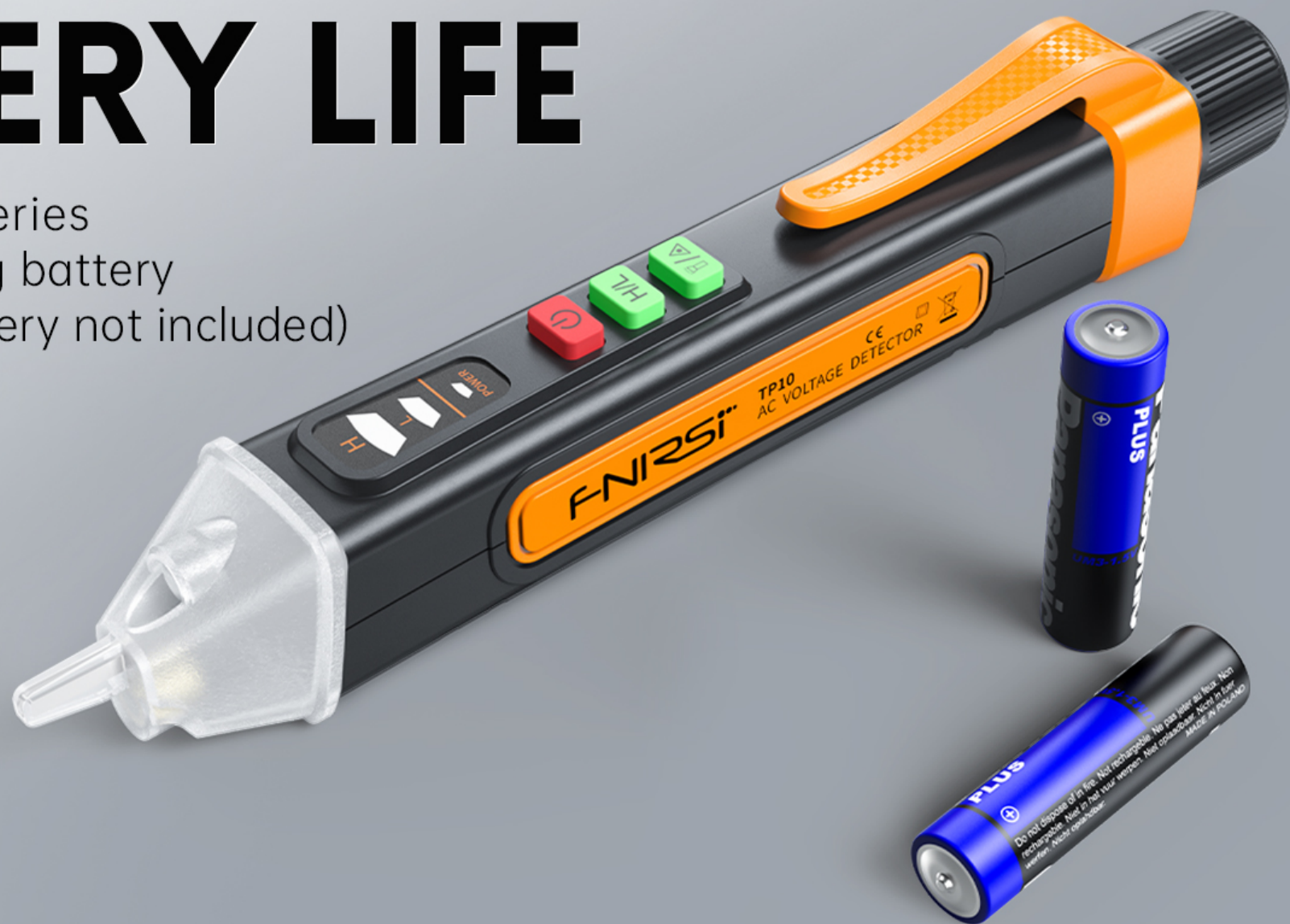


Automatic  
shut-down



# LONG BATTERY LIFE

Two 1.5V AAA batteries  
provide long-lasting battery  
life for the pen(battery not included)





# PRODUCT PARAMETERS

AC voltage range	Default: 48-1000V, High sensitivity: 12-1000V
Frequency	50Hz/60Hz
Alarm method	Sound & Light Alarm
Lighting flashlight	White LED lighting
Automatic shut-down	Automatic shutdown if no operation and no detection signal within 5 minutes
Battery low voltage indicator	When the voltage is lower than 2.4V, the power light flashes three times and beeps three times
Zero Fire Wire Judgment	Signal strength and lighting judgment, red = live line, orange = zero line
NCV sensitivity	high and low
NCV sensitivity indicator	When the sensitivity indicator is on, it is high sensitivity, and when it is off, it is a low sensitivity test state.
Security Level	CE CAT.III1000V/CAT.IV 600V
Operating temperature	0-40°C
Storage temperature	-10 -50°C
Battery	Two AA batteries (2*1.5V AAA)
Product weight	about 52g

Battery cover

Portable Pen Clip

Flashlight/  
Red Indicator Light

Sen sitivity adjustment

Switch machine

Voltage strength  
in dicati on

PC transparent  
protective cover

LED Lighting

Red Indicator Light

NCV Induction Probe

