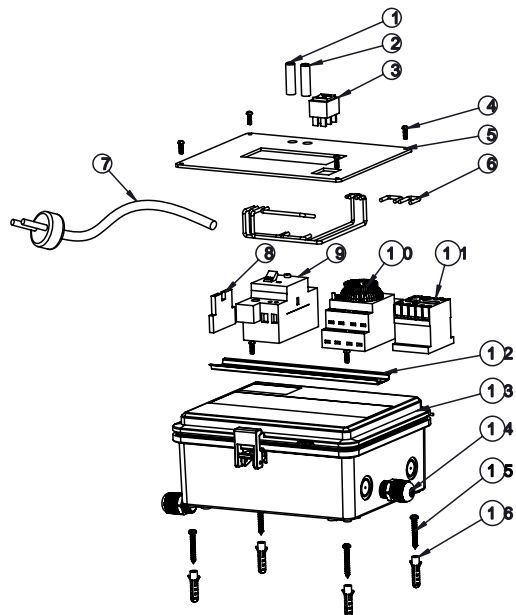


PART LIST



Item No .	Part No .	Product Description	QTY
1	04014061	Green light	1
2	04014060	Red light	1
3	04014027	Mode button	1
4	03011007	M4x12 screws	6
5	03021014	Control box panel	1
6	89330101	Cable	1
7	04013092	Cable with European plug	1
	04013073	Cable with Australian plug	1
	04013129	Cable with US plug	1
8	04014033	Earth connection	1
9	04014081	Power switch unit	1
10	04014029	Timer selector	1
11	04014067	220V AC contactor	1
	04014075	110V AC contactor	1
12	04014019	Track	1
13	89480101	Control box body	1
14	04014013	M8 Pg11 cable grand ()	4
15	03011023	Screws	4
16	87013019	Plastic fitting	4

KZD2200 CONTROL BOX

Code: (220V50Hz/60Hz)88330101

(110V50Hz/60Hz)88330201

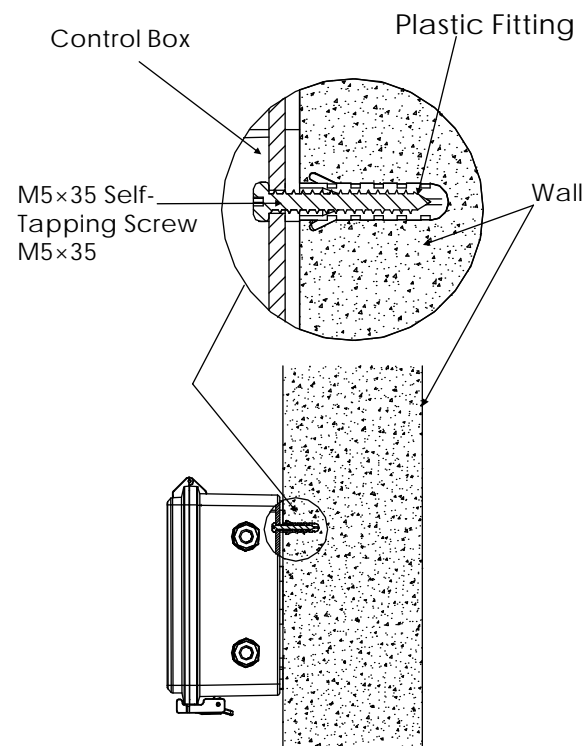
Keep this manual safe for future reference

CONTROL BOX INSTALLATION

Remove the Panel from the Control Box, position the box to the desired fitting place and mark on the wall with the location of the drilled holes, then drill 4 holes of 8mm on the marked position and insert a plastic fitting, secure the box by fastening 4 screws of M5x35 to the plastic fittings(See diagram below).



CONTROL BOX INSTALLATION DIAGRAM

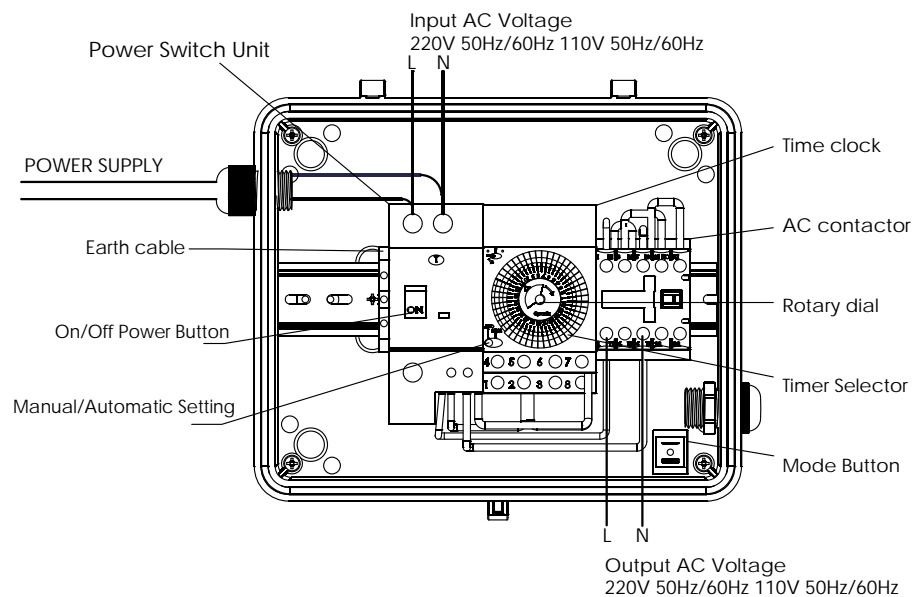


WARNING:

⚠ This electrical control box must be installed by a licensed or certified electrician or a qualified serviceman in accordance to the requirements of your government standard or local authorities. Improper installation will create electric hazards which could result in serious injury, death as well as damage to the property.

⚠ Before any servicing or maintenance work, make sure the electricity from the power supply had been switched off.

CONTROL BOX WIRING DIAGRAM



⚠ Warning: Maximum load of the Control Box must not exceed 2.2KW.

OPERATION INSTRUCTION

Automatic Mode: Allows all appliances to operate automatically based on the pre-set time.

1. Ensure the setting is on "Automatic" for the MODE BUTTON.
2. Turn ON the Power Button.

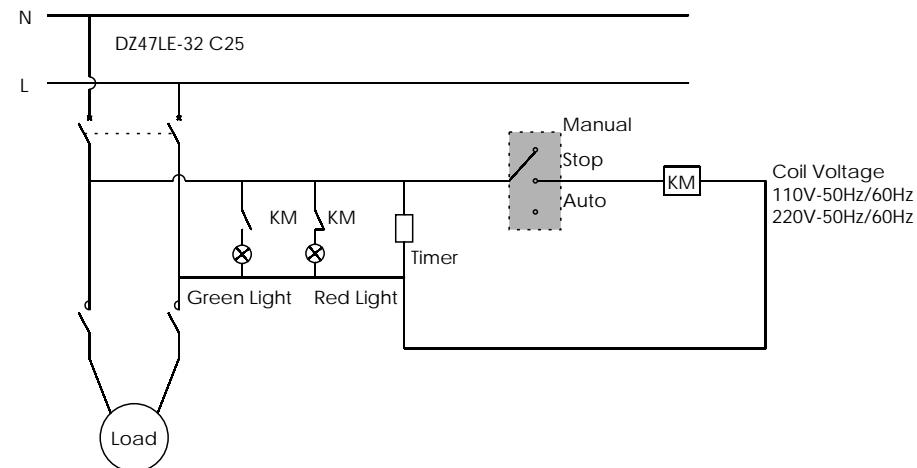
3. On the Timer, select the "Automatic" setting.
4. Turn the Rotary Dial to the current time, depress the Time Selector tabs to set the turn-on time.

Closed Mode: Turn off all appliances connected to the Control Box

Manual Mode: Operation without timer.

1. Ensure the setting is on "Manual" for the MODE BUTTON
2. The Power Button will be used to manually turn on/off the Control Box

110V/220V-50Hz/60Hz (Wiring Diagram)



Note:

1. Waterproof Standard reaching IP65, suitable for outdoor use.
2. Maximum load must not exceed 2.2kW.