



僑邦·齿轮减速马达  
**GEAR REDUCER MOTORS**

Thailand Distributor :  
Energy Power Save CO.,LTD.  
442/2 Chan Road, Thungwatdon Sathon Bangkok Thailand 10120  
www.7-mars.com, Email : info@-mars.com, Tel : +66(02) 114 7145-9 Ext.Sales

温州侨邦精密电机有限公司  
WENZHOU CHBNS PRECISION MOTOR CO.,LTD.



## 公司简介 Company profile

温州侨邦精密电机有限公司位于中国最具经济活力城市之一温州。围绕“技术创新、管理创新、工艺创新”的思路不断地前进，企业生产规模日益壮大。

公司主导产品为齿轮减速电机，齿轮减速刹车电机、齿轮减速马达，产品特点：体积小、重量轻、无噪音、免保养。广泛应用于各种工业生产流水线、输送机械、食品机械、医疗机械、印刷机械、纺织机械、包装机械、办公设备、仪器仪表、自动麻将机等领域，是自动化设备首选的配套产品。

公司拥有现代化的厂房，世界先进的制造加工和检测设备，技术力量雄厚，能为客户设计开发各种复杂情况的非标准减速机。

高素质的员工队伍，先进高效的加工设备，严格的质保体系，完善的售后服务，赢得了国内外用户的广泛信赖，销售营销网络遍布全国各大省市。产品远销东南亚、台湾等多个国家及地区产品。

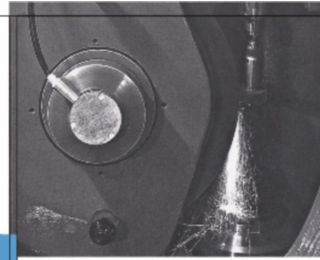
Wenzhou QIAOBANG Precision Motor Co., Ltd. is located in Wenzhou, one of the most economically dynamic cities in China. Centering on the concept of 'innovation in technology, management and process', our company is constantly moving forward and increasingly expanding our production scale.

The company's main products include gear reducers and gear reducer braking motors, gear reducer motors, which are characterized by: compact structure, light weight, No-noise and maintenance-free. As a preferred auxiliary product of automatic equipment, our products are widely applied in such fields as industrial production lines, conveying machinery, food machinery, medical machinery, printing machinery, textile machinery, packaging machinery, office equipment, instruments, meters and automatic mahjong machines.

Our company owns modern workshops, world advanced manufacturing, processing and testing equipments and strong technical capability, being able to design and develop nonstandard gear reducers applicable for complicated conditions for customers.

We've won extensive trust in clients both at home and abroad on the strength of our high-quality staff team, advanced and efficient processing equipment, strict quality assurance system and perfect after service. Our sales and marketing networks cover all major provinces and municipalities of China, and exported to many countries and regions, like Southeast Asia and Taiwan.

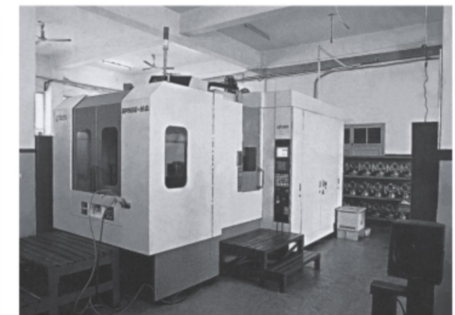
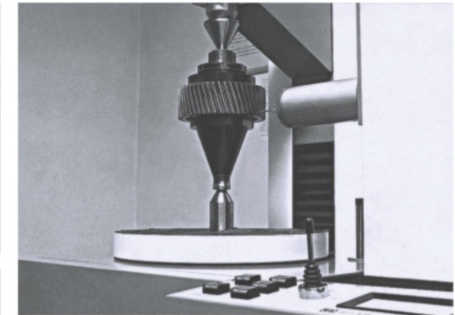
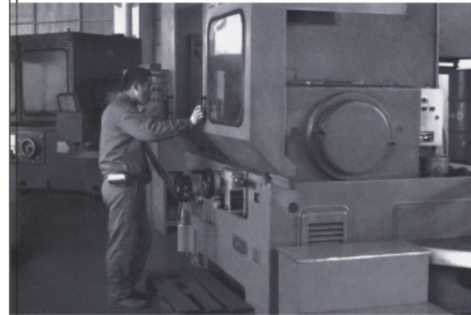
Company profile



## 先进的设备制造 Advanced manufacturing equipment

优秀的品质，源于制造工艺的先进。侨邦拥有先进的生产技术和设备，使产品在品质与外在个性设计紧密结合，完美满足并引领工业现代化的需要。

Superior quality is originated from advanced manufacturing technology, with the use of advanced production and technical equipments. Qiaoban products are given good quality and individualized design to fully meet and lead the requirements of industrial modernization.

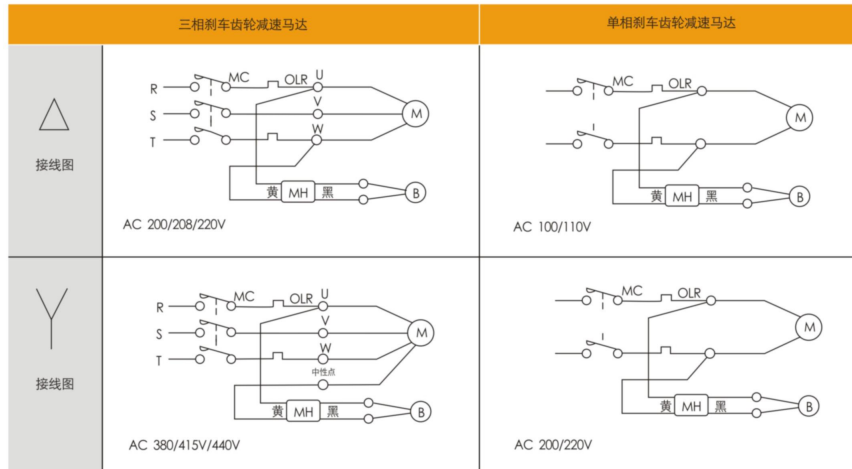


- 特长**
- 断电时动作 ..... 无激磁动作刹车、断电时自动刹车动作。
  - 接线容易 ..... 整流器装于马达外壳上、接交流电源。
  - 小型重量轻 ..... 加装刹车所增加马达长度极少、体积小、重量轻。
  - 寿命长 ..... 刹车来令片材质耐磨耗性佳、刹车动作正确、调整方便。

### ▶ 刹车规格标准

输出电压	三相刹车齿轮减速马达	单相刹车齿轮减速马达
输入电压	AC200/208/220V-50/60Hz	AC100/100/-50/60HZ
输出电压	DC90/108V	DC90/108V
周围环境温度	-10°C ~ +50°C	
绝缘耐压	AC1500V	

### ▶ 接线图



- M----- 马达
- MH----- 整流器
- MC----- 电磁接触器
- OLR----- 过负荷继电器

注：刹车马达接变频器使用，刹车线圈可能产生吸合不良，刹车线圈可直接铭牌标注的市电。

# 0.1KW

## GW型卧式三相铝壳（刹车）马达减速机

GW.HORIZONTAL TYPE WITH ALUMINOM PLATE 3PHAS(BRAKE)GEAR MOTOR

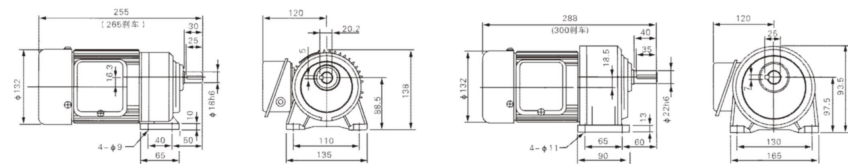
### ▶ 马达尺寸图 Dimensions chart

单位：mm

#### GLW-18-100-3~60

轻负载缩框型GLW-18-100-70~200

#### GLW-22-100-60~200



## GF型立式三相铝壳（刹车）马达减速机

GF.RTICAL TYPE WITH ALUMINOM PLATE 3PHAS(BRAKE)GEAR MOTOR

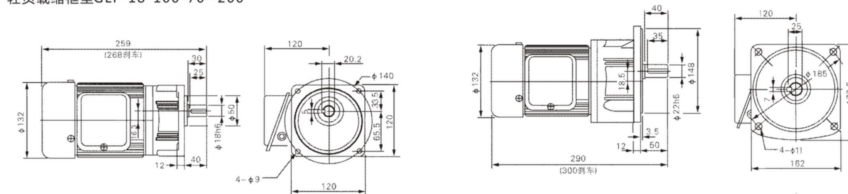
### ▶ 马达尺寸图 Dimensions chart

单位：mm

#### GLF-18-100-3~60

轻负载缩框型GLF-18-100-70~200

#### GLF-22-100-60~200







# 0.4KW

## GW型卧式三相铝壳(刹车)马达减速机

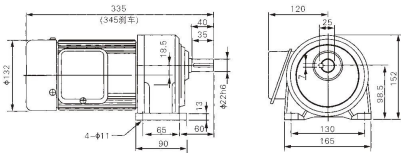
GW HORIZONTAL TYPE WITH ALUMINOM PLATE 3PHAS(BRAKE) GEAR MOTOR

### ▶ 马达尺寸图 Dimensions chart

单位: mm

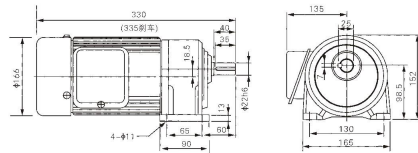
#### GLW-22-400-3~10

轻负载缩框型GLW-22-400-15~90



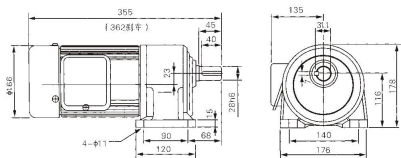
#### GLW-22-400-3~10

轻负载缩框型GLW-22-400-15~90



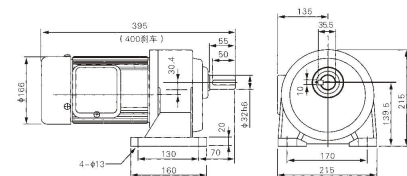
#### GLW-28-400-15~90

轻负载缩框型GLW-28-400-100~200



#### GL(H)W-32-400-100~200

注: 缩框型为轻负载, 无大惯性场合中使用。为不正当设计, 如非必要请勿使用。



# 0.4KW

## GF型立式三相铝壳(刹车)马达减速机

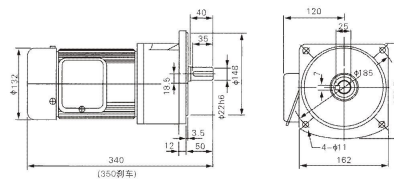
GF RTICAL TYPE WITH ALUMINOM PLATE 3PHAS(BRAKE) GEAR MOTOR

### ▶ 马达尺寸图 Dimensions chart

单位: mm

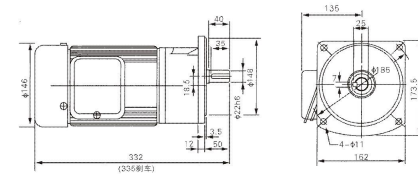
#### GLF-22-400-3~10

轻负载缩框型GLF-22-400-15~90



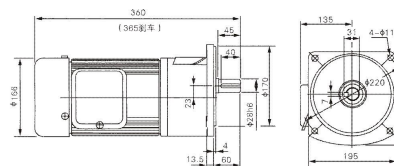
#### GLF-22-400-3~10

轻负载缩框型GLF-22-400-15~90



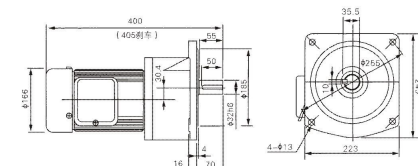
#### GLW-28-400-15~90

轻负载缩框型GF-28-400-100~200



#### GL(H)W-32-400-100~200

注: 缩框型为轻负载, 无大惯性场合中使用。为不正当设计, 如非必要请勿使用。



# 0.75KW

## GW型卧式三相铝壳（刹车）马达减速机

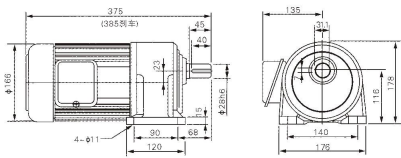
GW.HORIZONTAL TYPE WITH ALUMINOM PLATE 3PHAS(BRAKE) GEAR MOTOR

### ▶ 马达尺寸图 Dimensions chart

单位: mm

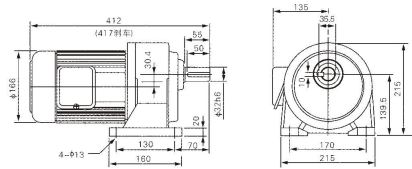
#### GLW-28-750-3~25

轻负载缩框型GLW-28-750-30~120

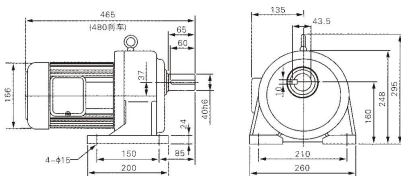


#### GL(H)W-32-750-30~120

轻负载缩框型GL(H)W-32-750-130~200



#### GHW-40-0.75-30~200



注：缩框型为轻负载，无大惯性场合中使用。为不正当设计，如非必要请勿使用。

# 0.75KW

## GF型立式三相铝壳（刹车）马达减速机

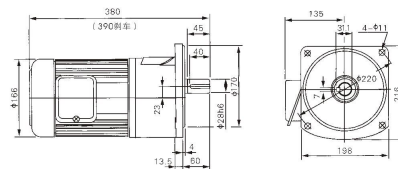
GF.VERTICAL TYPE WITH ALUMINOM PLATE 3PHAS(BRAKE) GEAR MOTOR

### ▶ 马达尺寸图 Dimensions chart

单位: mm

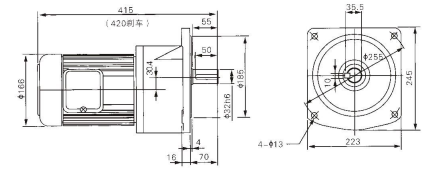
#### GLF-28-750-3~25

轻负载缩框型GLF-28-750-30~120

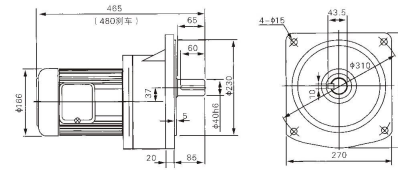


#### GL(H)F-32-750-3~120

轻负载缩框型GL(H)F-32-750-130~200



#### GFH-40-750-100~200



注：缩框型为轻负载，无大惯性场合中使用。为不正当设计，如非必要请勿使用。