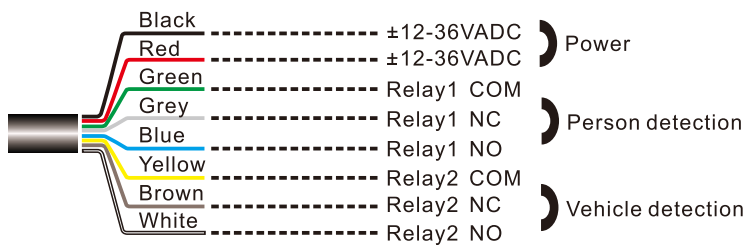


## RVP42-9BW Industrial Door Sensor User Manual

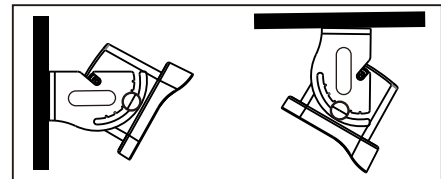
### Products

RP42-9BW is a high-performance motion radar detector for vehicle detection and human detection, specially developed for industrial doors, garage doors, cold storage doors, road gates and other industries. It is with dual relays of vehicle-detection and pedestrian-detection, and can also open the corresponding relay output as needed. Meanwhile, RVP42-9BW has a recognition and filter function for horizontally moving vehicles or pedestrians. Support app setting, you can use remote transmitter and mobile apps to setting the function.

### Wiring And Installation

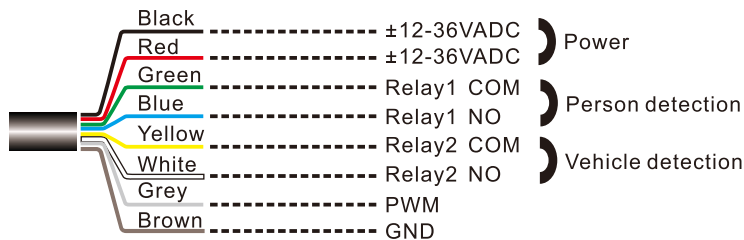


**Notes:** Detect Human (The Red Light is on)  
Detect Vehicle (The Green Light is on)

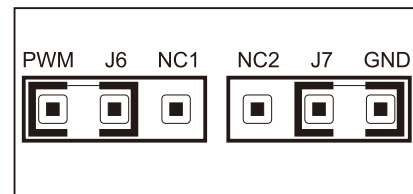


- The sensor should be firmly installed on a flat surface to eliminate vibration effects.
- Avoid distracting objects (such as banners, plants, etc.) from blocking the detection area.
- Avoid all metal objects covering the sensor front cover.
- Avoid installing the sensor near fluorescent lights.

### Radar Bluetooth Connection Light



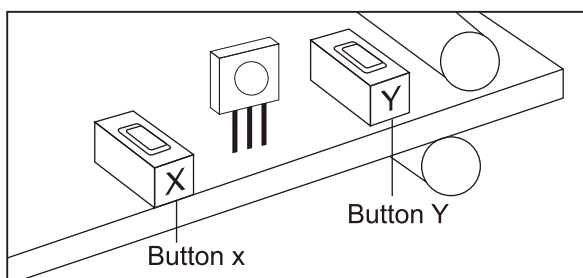
**Notes:** Detect Human (The Red Light is on)  
Detect Vehicle (The Green Light is on)



Jumper Cap Setting


### Setting

- Operation steps: Press X and Y at the same time to enter the functional settings.
- Basic functions: Press X and Y buttons at the same time and hold for 2 seconds, The green LED flashes once and then release.
- Deep function: Press X and Y buttons at the same time and hold for 4 seconds, The red LED flashes once and then release.
- Restore factory: Press X and Y button at the same time and hold for 8 seconds, Red and green LEDs flash once and then release.



Operation: Press the button X and Y at the same time for the function setting.

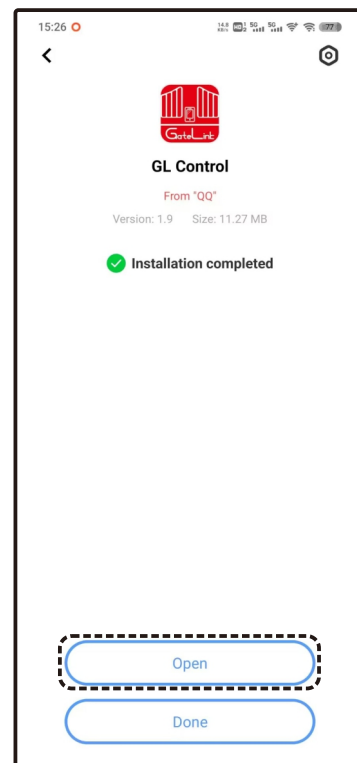
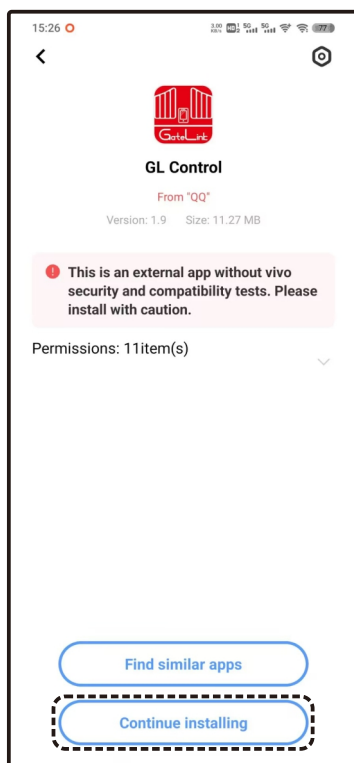
Technical Data

	RVP42-9BW	Application technology:Doppler radar
		Transmission frequency:24.125GHz
		Transmission power:<20dBm
		Detection height:2.0m~9.0m
		Angle adjustment:0°-90°longitudinal
		Detection speed:5cm/s ~ 25km/s
		Detection area(30° Angle): 3.0m*3.5m@height: 2m,6.5m*8.5m@height: 9m
		Operation voltage:12~36VADC
		Operation current:<100mA
		Power frequency:50Hz
		Temperature range:-30 °C ~ + 60 °C
		Relative humidity:0% to 95%, no condensation
		Protection grade:IP65
		Relay output:24VDC@1A 125VAC@0.5A
		External dimensions:164mm x 111mm x 94.5mm
		Cable length:7m
		Sensor weight:650g

# Details of Mobile APP Software Operation

## Scan QR Code To Download (Android)

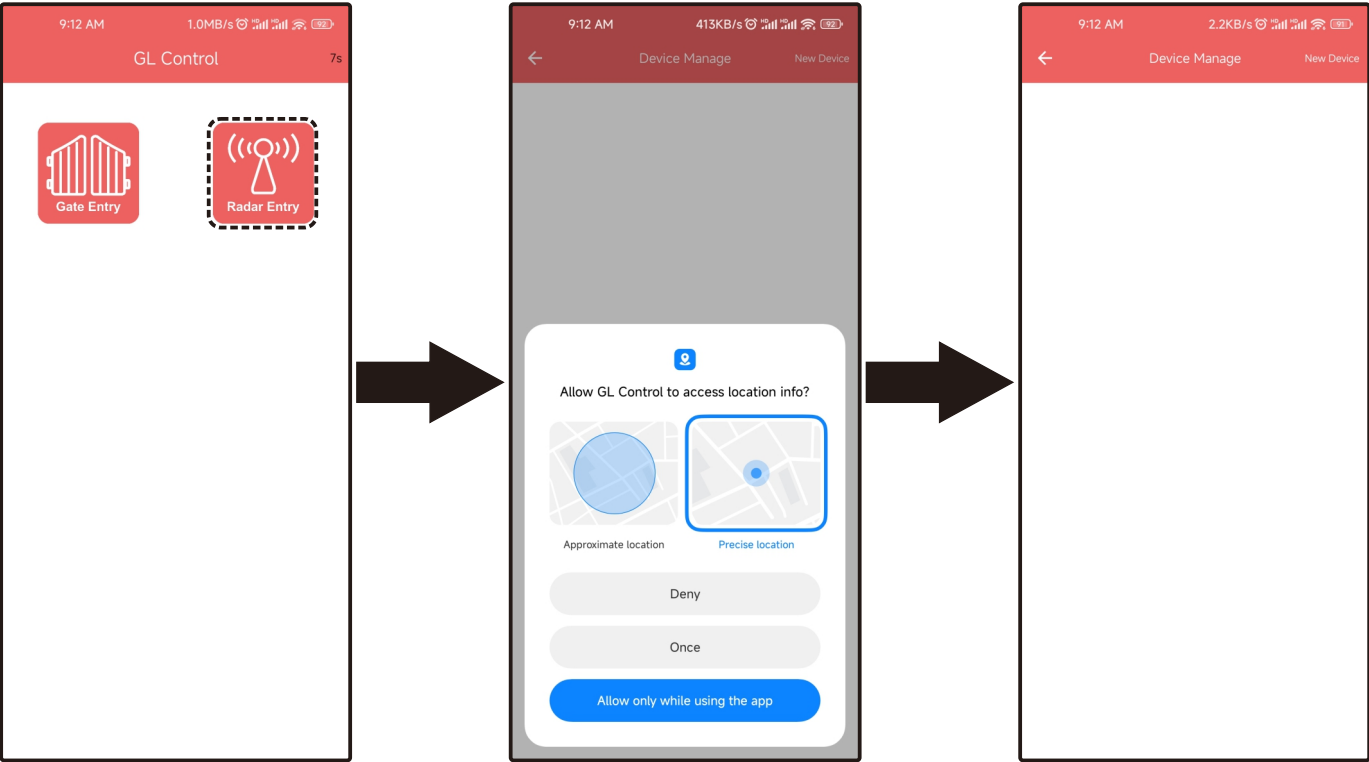
Android users can download and install GL Control by scanning the QR code below, click Install, open Bluetooth, and connect to GL Control



**Note:** The initial password is 12345678, and the mobile app is within five meters of the device modification.

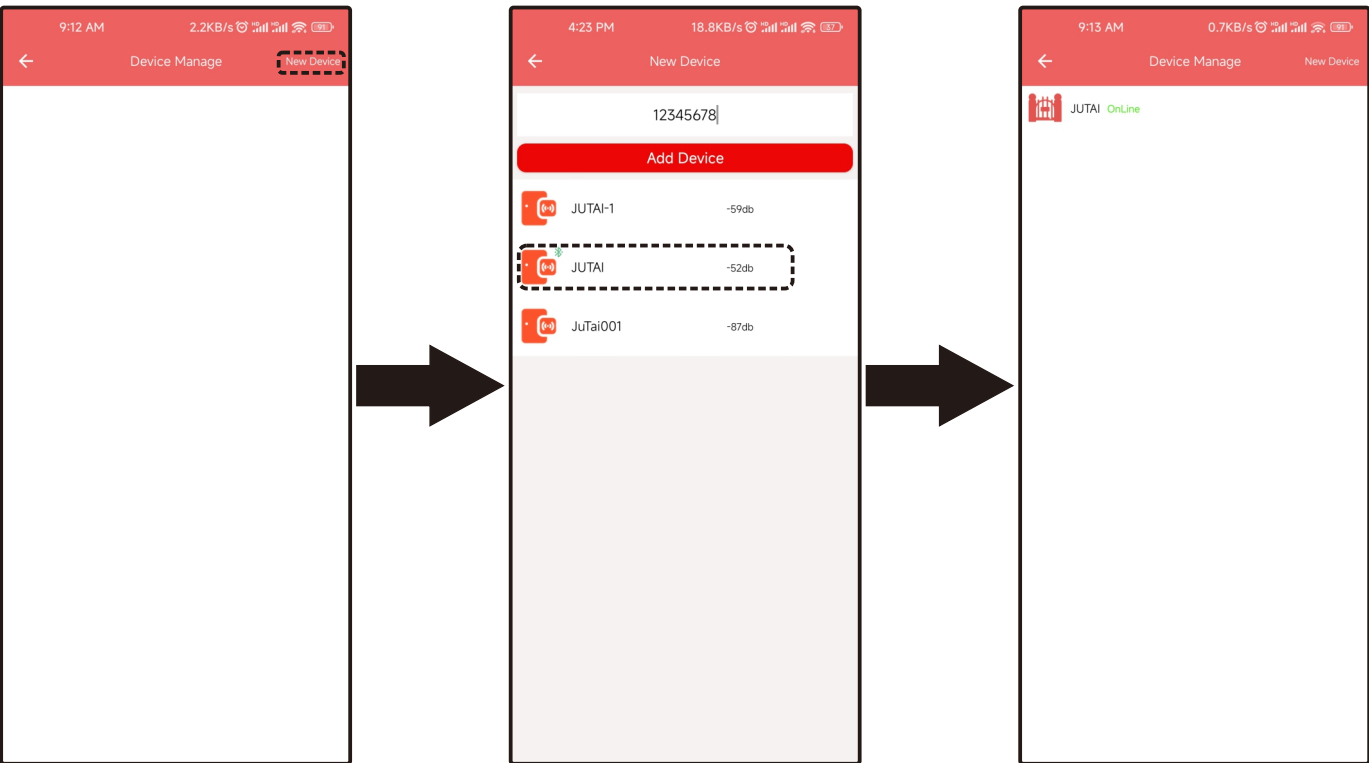
Software Operation

After installing the APP, open the phone Bluetooth, Enter the APP, click “Radar Entry”, Allow location authorization, As shown below:



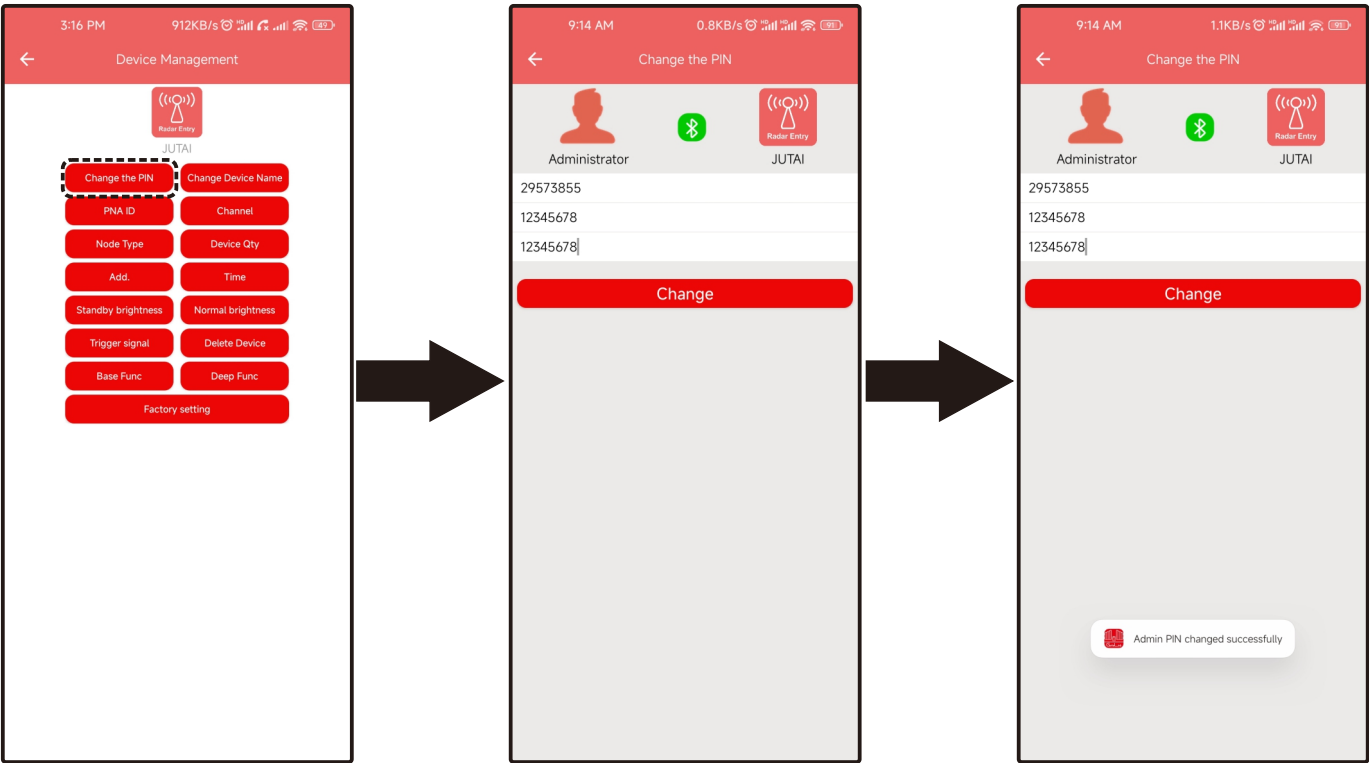
Adding Devices

Click the “New Device”, and Choose the radar sensor device, input the initial password and click on Add Device.



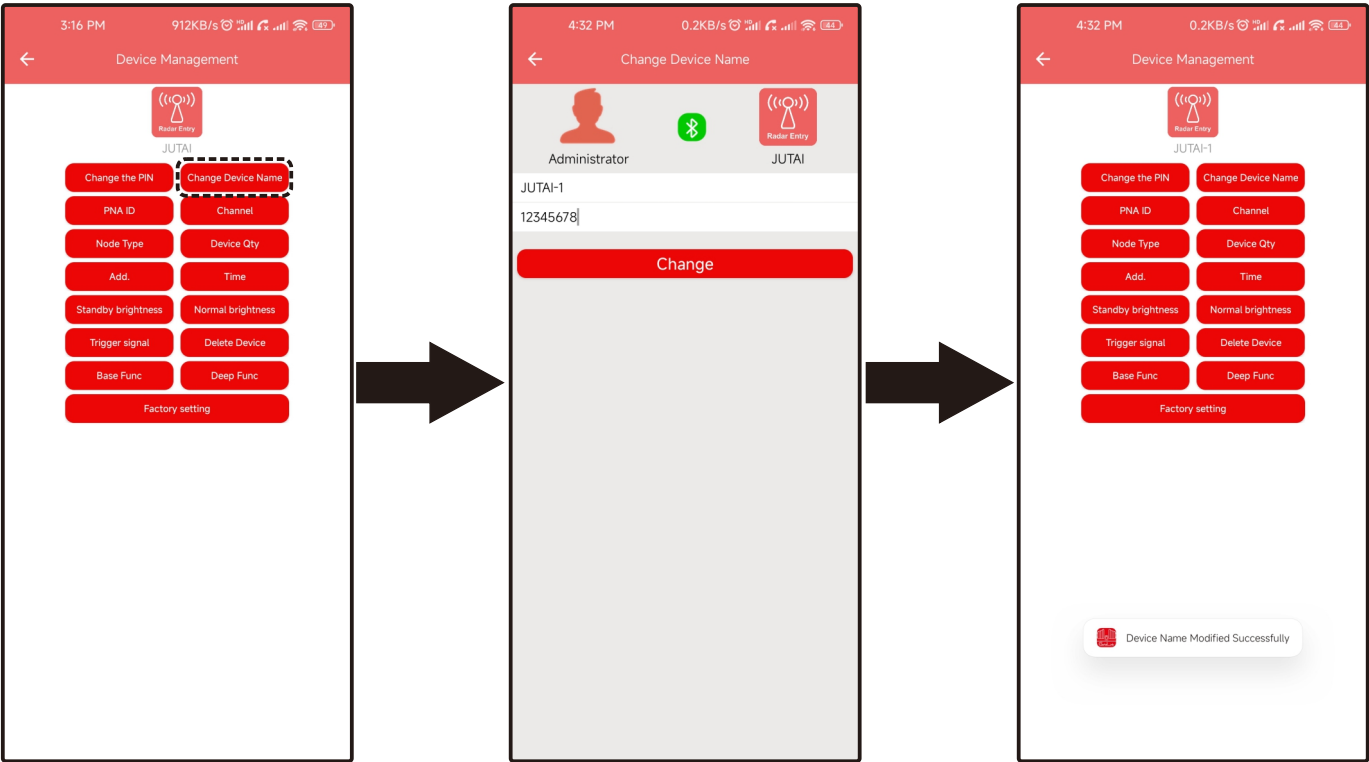
## Change Password

Click “ Change the PIN”, input the initial password, and input the new password, click “Change” to finish.



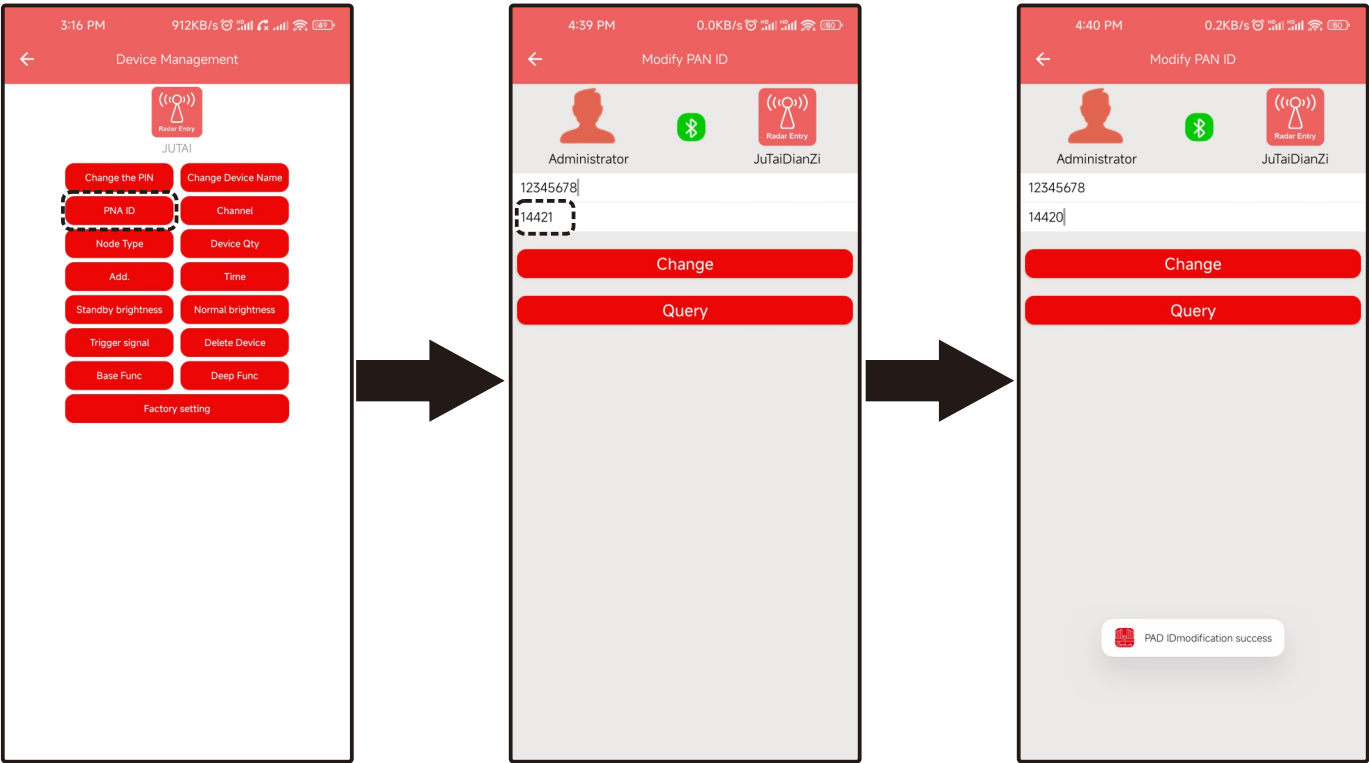
## Change Device Name

Click “ Change Device Name”, input the new name, and password, click “Change” to finish.



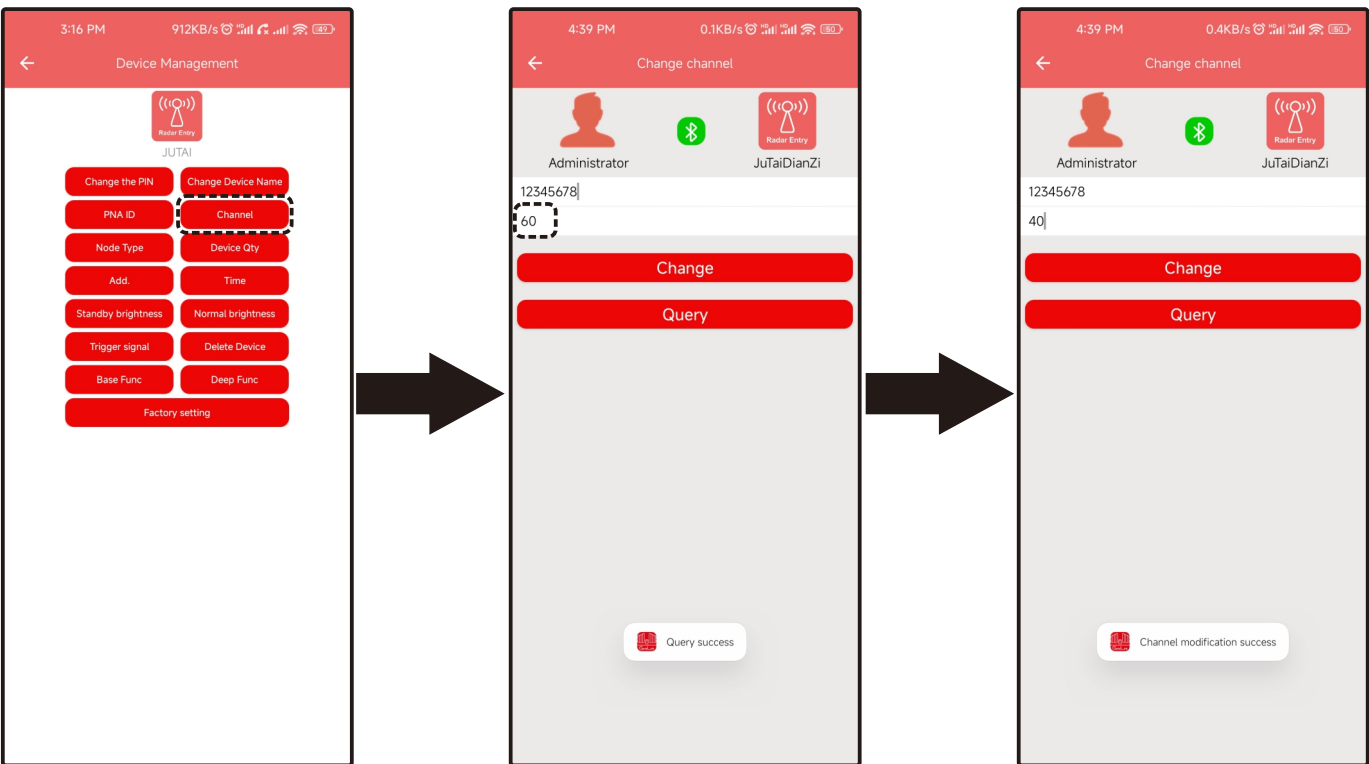
## Change PAN ID

Click “ PAN ID”, input password, click “Query”, it can query this device ID, input new PAD ID(1-65535), click “Change” to finish. Coordinator and End Device need same PAN ID.



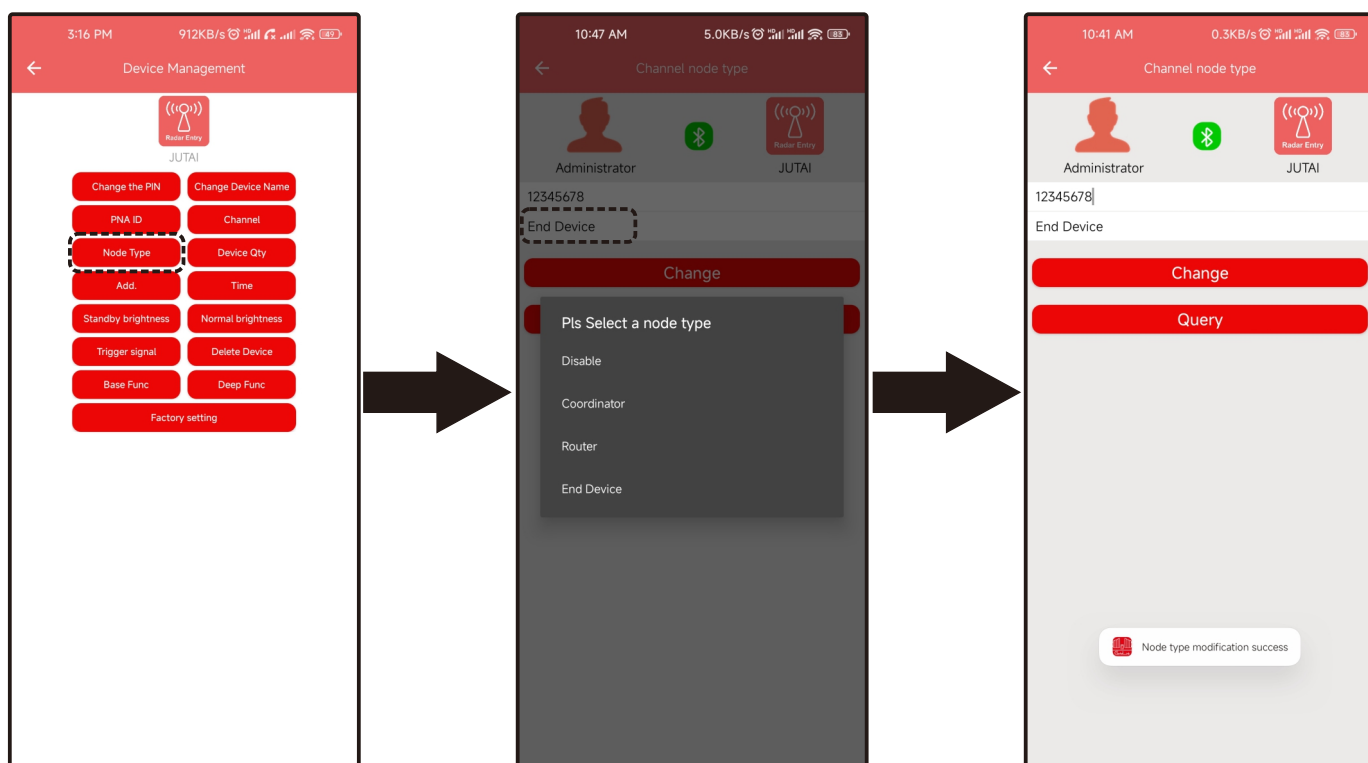
## Change Channel

Click “ Channel”, input the password, click “Query”, it can query this device channel, input channel range (20-60), click “Change” to finish. Coordinator and End Device need same Channel.



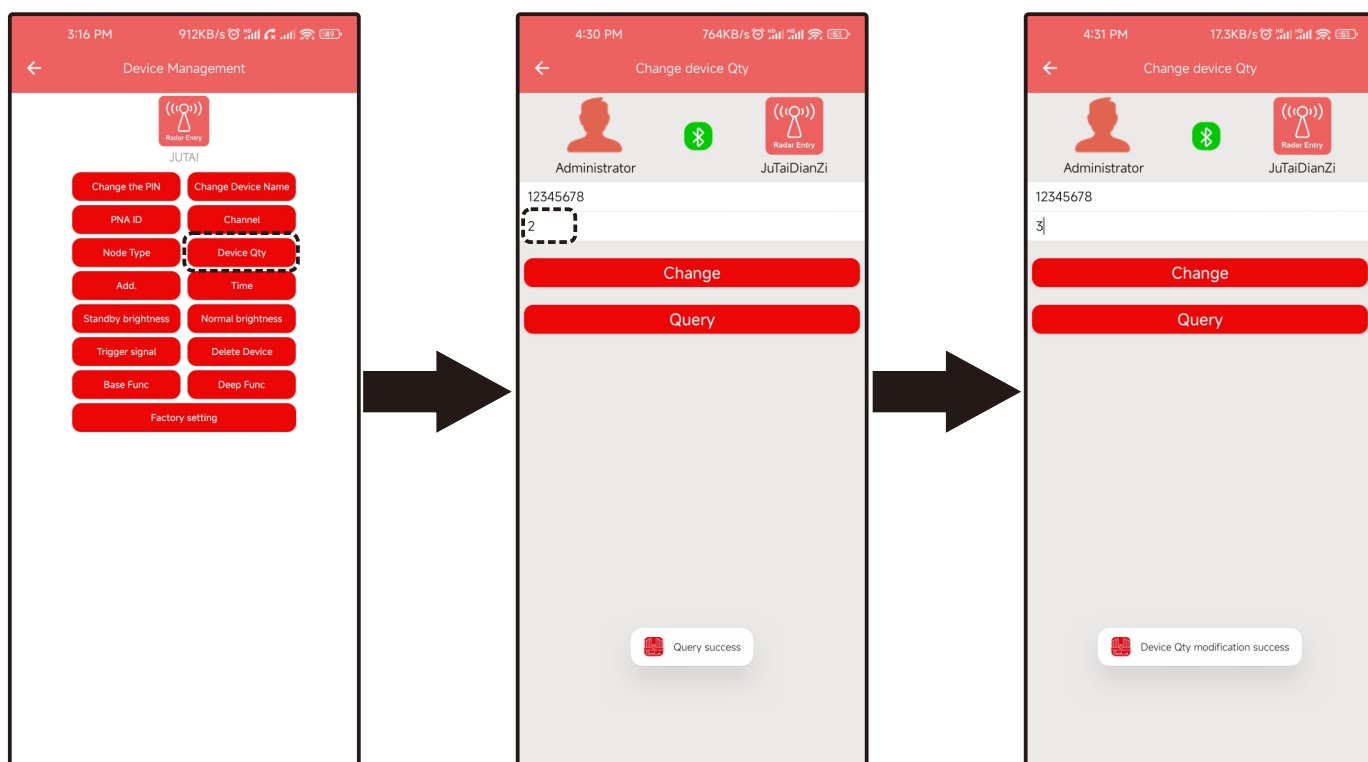
## Change Node Type

Click “Node Type”, input password, click “Query”, it can query this device Node Type, click it to change coordinator or End Device, If the Coordinator and End device distance are too far, the middle one device need to select Router, click Change to modify.



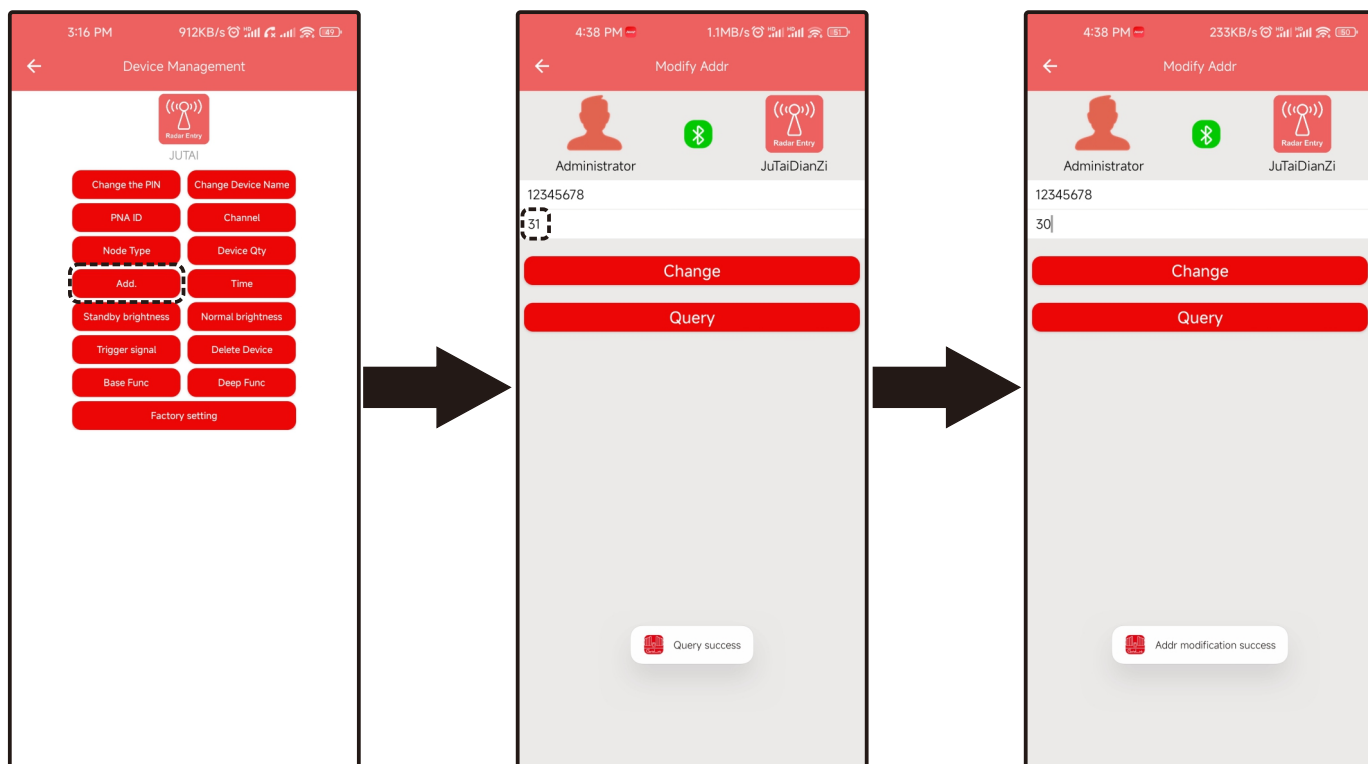
## Change Device Qty

Click “Device Qty”, input password, input the device Qty(2-31), click “Change” to modify, only change Qty from the Coordinator device. The End Device no need change.



## Change Add

Click “Add”, input password, click “Query”, it can check the address of this device, click Input New Addr (range: 1-31), The coordinator device has a default address, the End Device can be modified by your choice, click “Change” to modify.



## Change Time (Time of light on)

Click “Time”, input password, click it to change (2-31), click “Change” to modify.

