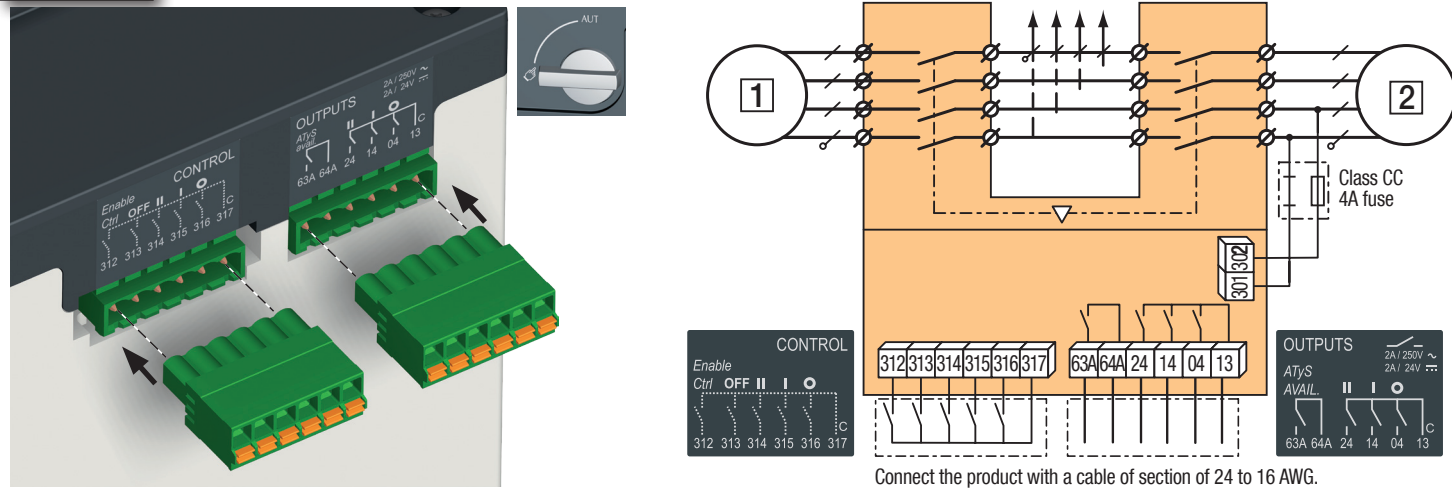


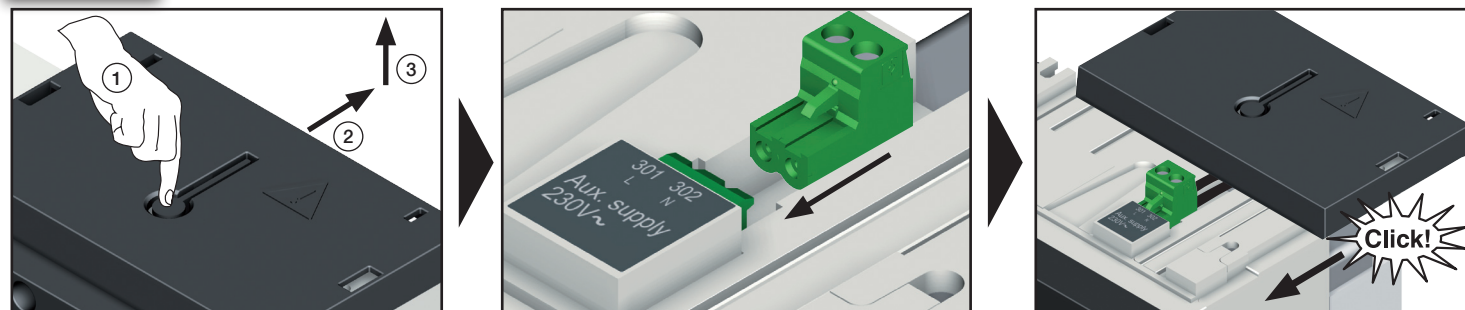
STEP 3B

Control / Command Terminals - Ensure that the product is in Manual Mode.



STEP 4

Power Supply Terminal - Remove the Top cover to access and connect the terminal - Replace the cover before putting in service.



STEP 5

Check

Whilst in manual mode, check the wiring and if ok power up the product.

LED "Power" Green: ON
LED Manuel/Default Red (Product not Available): ON

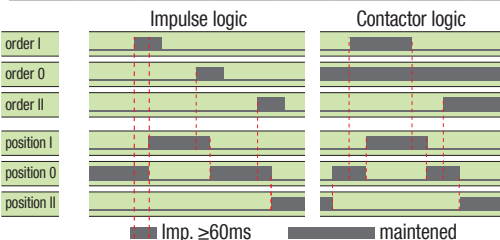
NOTE: Nominal Aux. Supply Voltage : 208 – 277Vac



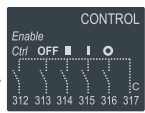
STEP 6A

Motorised Operation

Ensure that the emergency handle is not inserted in the product and turn the mode selector to the AUT position.
LED "Power" Green: ON
LED Manuel/Default: OFF

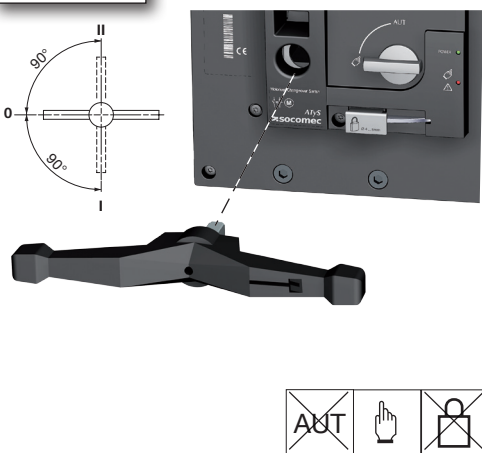


To enable control, close contact 312 with 317.
To force the product to 0 position/OFF bridge the contact 313 with 317.
For contactor logic bridge contact 316 with 317.
To operate: close the contact corresponding to the desired position.



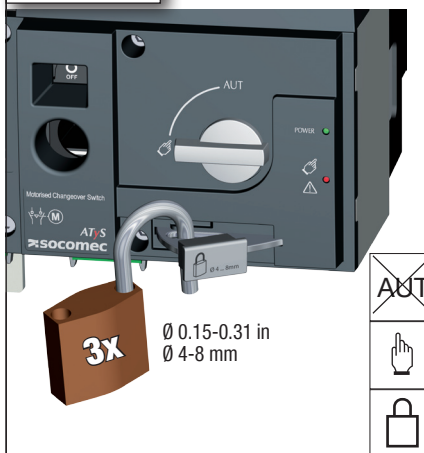
STEP 6B

Emergency Manual Operation



STEP 6C

Padlocking Mode (in position O)



socomec
Innovative Power Solutions

QUICK START

ATyS

Transfer Switch

UL 1008: Optional Standby Power
600A, 800A, 1200A

Preliminary operations

Check the following upon delivery and after removal of the packaging:

- Packaging and contents are in good condition.
- The product reference corresponds to the order.
- Contents should include:
Qty 1 x ATyS
Qty 1 x Emergency handle and fixing clip
Quick Start instruction sheet

Warning

⚠ Risk of electrocution, burns or injury to persons and / or damage to equipment.

This Quick Start is intended for personnel trained in the installation and commissioning of this product. For further details refer to the product instruction manual available on the SOCOMECE website.

- This product must always be installed and commissioned by qualified and approved personnel.
- Maintenance and servicing operations should be performed by trained and authorised personnel.
- Do not handle any control or power cables connected to the product when voltage may be, or may become present on the product, directly through the mains or indirectly through external circuits.
- Always use an appropriate voltage detection device to confirm the absence of voltage.
- Ensure that no metal objects are allowed to fall in the cabinet (risk of electrical arcing).

Failure to observe good engineering practises as well as to follow these safety instructions may expose the user and others to serious injury or death.

⚠ Risk of damaging the device

- In case the product is dropped or damaged in any way it is recommended to replace the complete product.

Accessories

- Bridging bars and connection kits.
- Terminal screens.
- Terminal lugs.

Spares

- Motorisation module

For further details for spares and accessories, please refer to the instruction manual in chapter - "Spare parts and accessories"

www.socomec.com

To download, brochures, catalogues and technical manuals:



www.socomec.com/operating-instructions

Printing informations: 1 color Black. White paper 90g/m².
Printing size: 420x297. Final size 210x297. This page visible first.



546814A

UL 1008

Non contractual document.
Subject to change without notice.

Installation and Commissioning

STEP 1

Cabinet / Back Plate Installation

STEP 2

Connecting the POWER section

STEP 3

COMMAND / CONTROL terminal connections

STEP 4

Power SUPPLY terminal connections

STEP 5

CHECK

STEP 6A

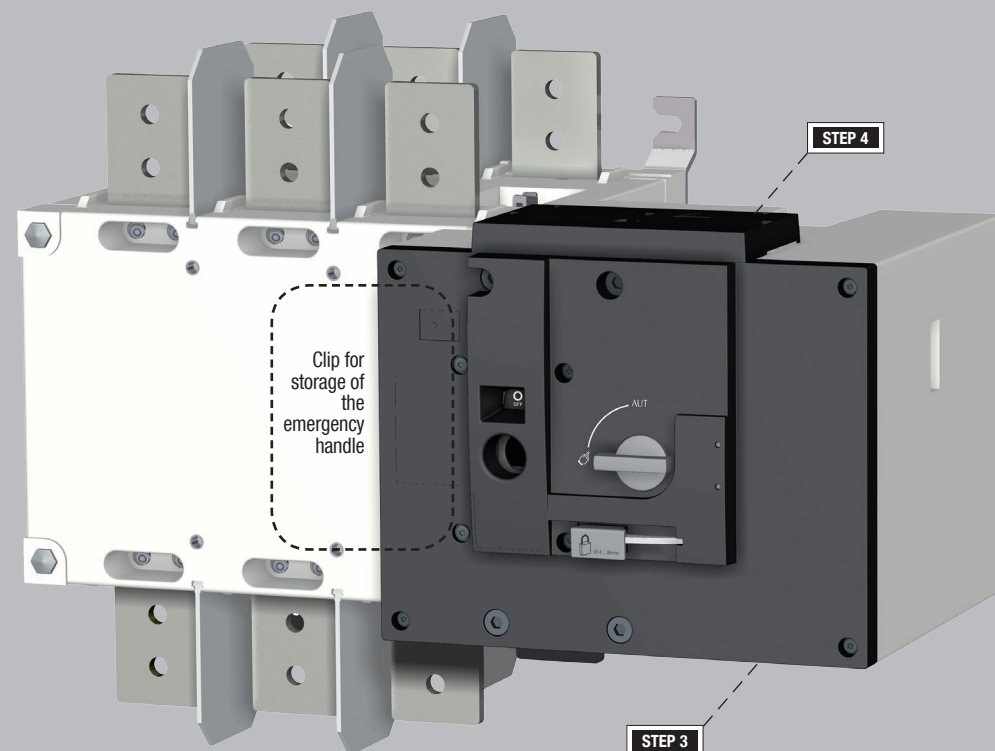
Control by an external order (AUTO)

STEP 6B

Emergency Manual Operation

STEP 6C

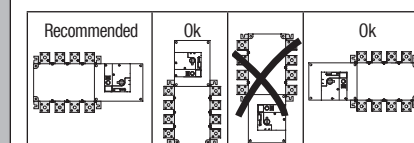
Padlocking



STEP 1A

Installation

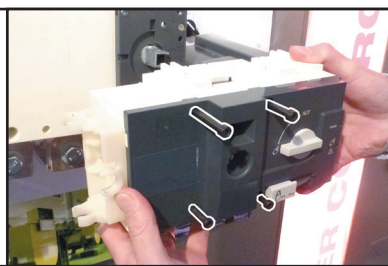
Attention: Ensure that the product is installed on a flat rigid surface.



	FRAME B6		FRAME B7			
	600 A		800 A		1200 A	
	3P	4P	3P	4P	3P	4P
Ref ATyS	97233060	97234060	97233080	97234080	97233120	97234120
Dim. code	1	2	3	4	5	6

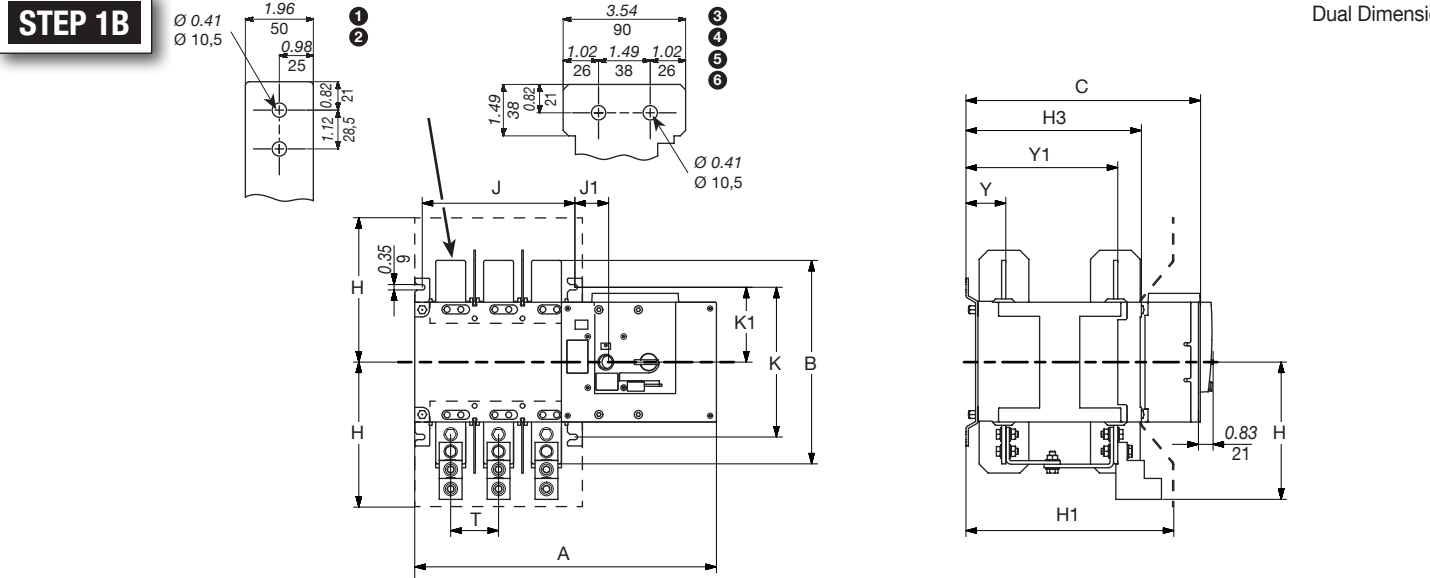
Spares: Motorisation module

Ref. Spare part motorisation	USED FOR ATyS REFERENCE				
97095060	600A	3, 4 P	B6	97233060 / 97234060	
97095080	800A		B7	97233080 / 97234080	
97095120	1200A			97233120 / 97234120	

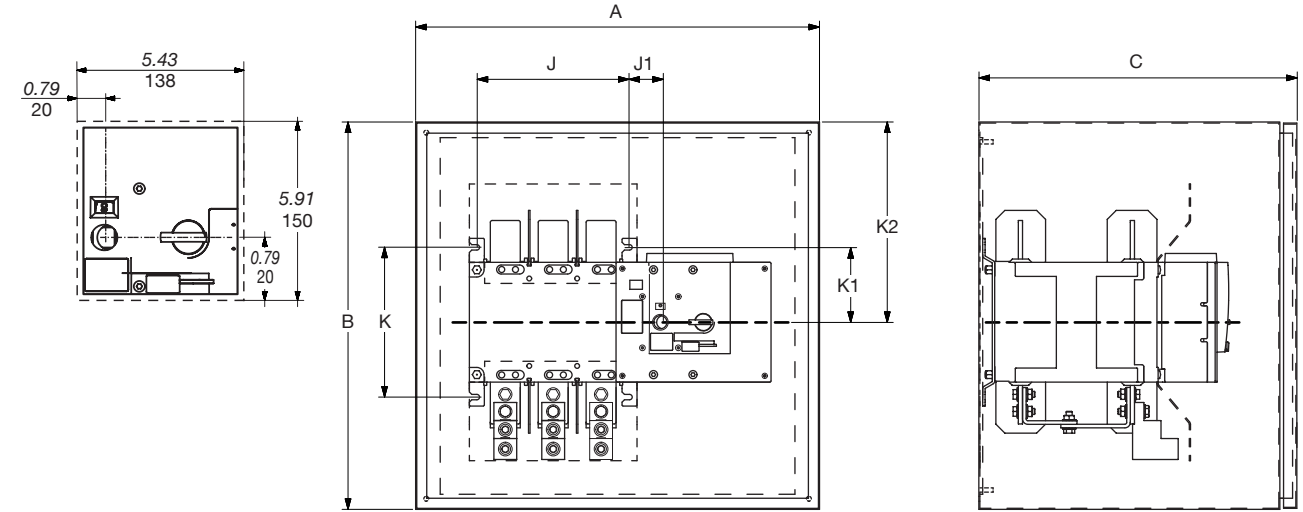


STEP 1B

Dual Dimensions



Ref. code		A	B	C	H	H1	H2	H3	J	J1	K	K1	T	Y	Y1
1	3P	19.8	504	13.38	340	15.4	392	9.09	231	13.7	347	9.05	230	11.5	293
2	4P	22.99	584												
3	3P	23.5	596	11.34	288	15.4	392	8.30	211	13.7	347	8.03	204	11.5	293
4	4P	28.2	716												



Ref. code		A	B	C	J	J1	K	K1	K2
1	3P	36	915	48	1220	20	508	10.04	255
2	4P							12.18	335
3	3P	36	915	60	1524	20	508	13.66	347
4	4P							18.38	467
5	3P	36	915	60	1524	20	508	13.66	347
6	4P							18.38	467

STEP 2A

BRIDGING BARS KIT	USED FOR ATYS REF.
41593063	97233060
41594063	97234060



230 lb-in
26 Nm



BRIDGING BARS KIT	USED FOR ATYS REF.
41593080	97233080 / 97233120
41594080	97234080 / 97234120

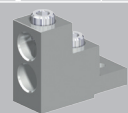


230 lb-in
26 Nm

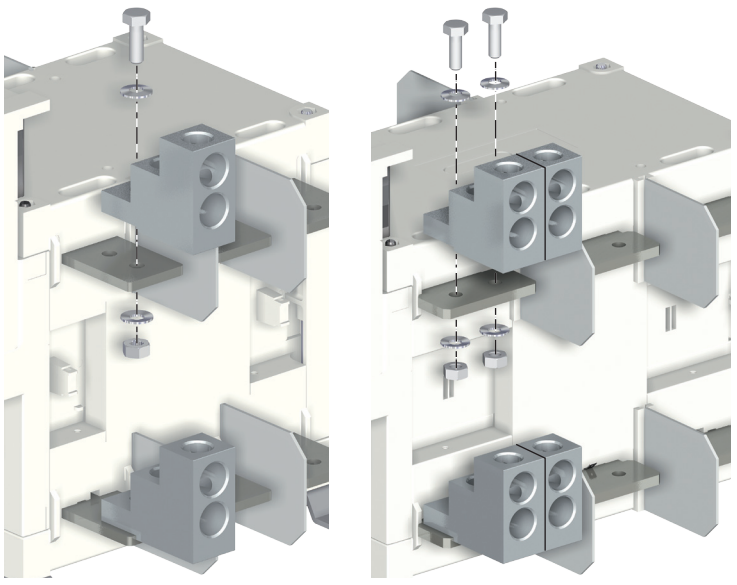
STEP 2B

Power Terminal Connections (optional accessories)

To be connected using terminal lugs, rigid or flexible busbars.

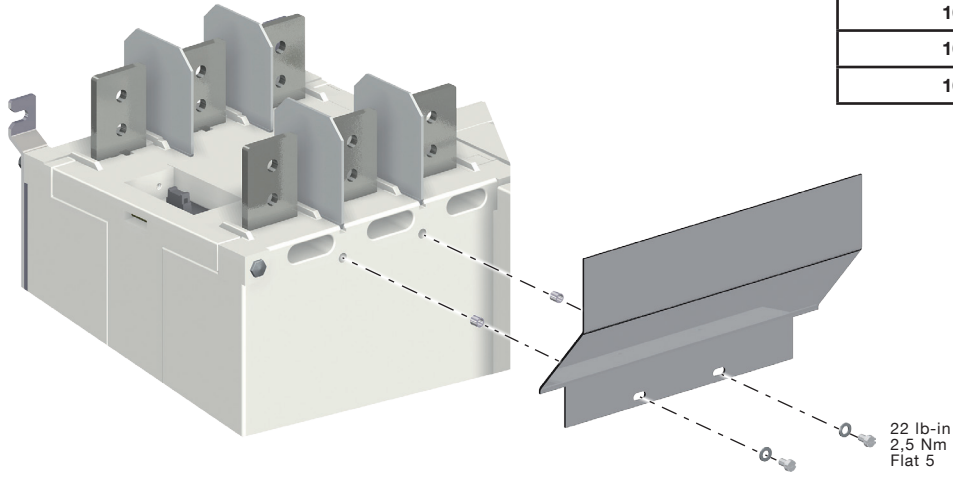
	FRAME B6		FRAME B7			
	600 A		800 A		1200 A	
Ref ATyS	97233060	97234060	97233080	97234080	97233120	97234120
Ref lugs	39543060	39544060	39543080	39544080	39543120	39544120
Qty per reference	3	4	6	8	6	8
Ref qty to order	x3	x3	x3	x3	x3	x3
Désignation	 PV2-600					
Size (AWG) min.	# 2					
Size (AWG) max.	600 Kcmil					
Opening per lug	2	2		2 x 2		
Size of screw	H M10x45- 6.8					
Torque lb.in / mm	310 / 35					

When ordering ensure to order QTY 3 for each lug reference
(Quantity 2 for incoming power cables and quantity 1 for outgoing cables)



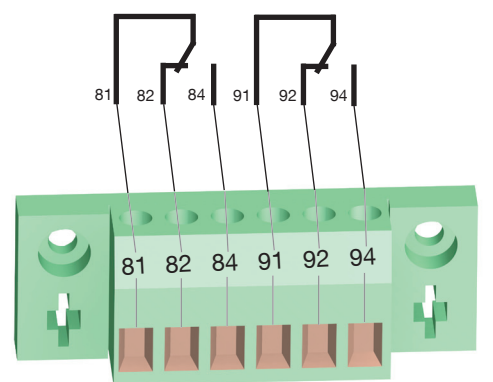
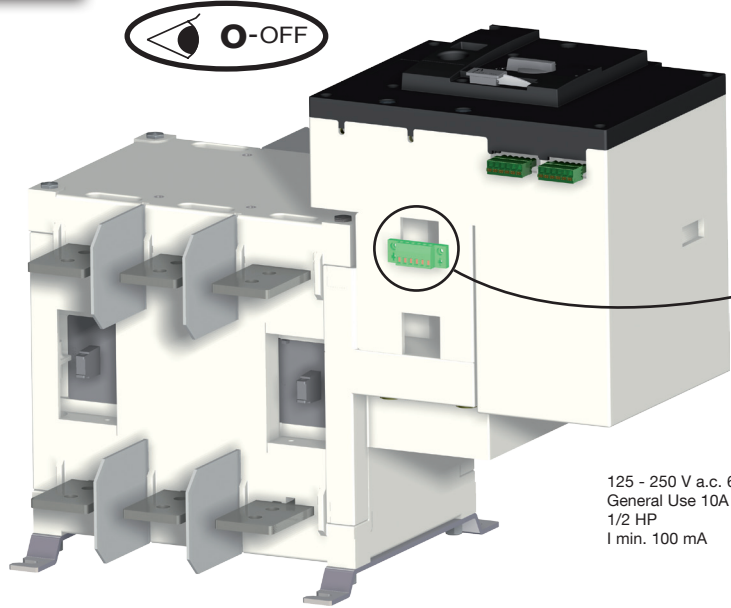
STEP 2C

Mounting of terminal covers (optional accessory)



Ref. TOP or BOTTOM	USED FOR
16093063	97233060
16094063	97234060
16093080	97233080 / 97233120
16094080	97234080 / 97234120

STEP 3A



125 - 250 V a.c. 60 Hz
General Use 10A
1/2 HP
I min. 100 mA

Auxiliary contacts
10A