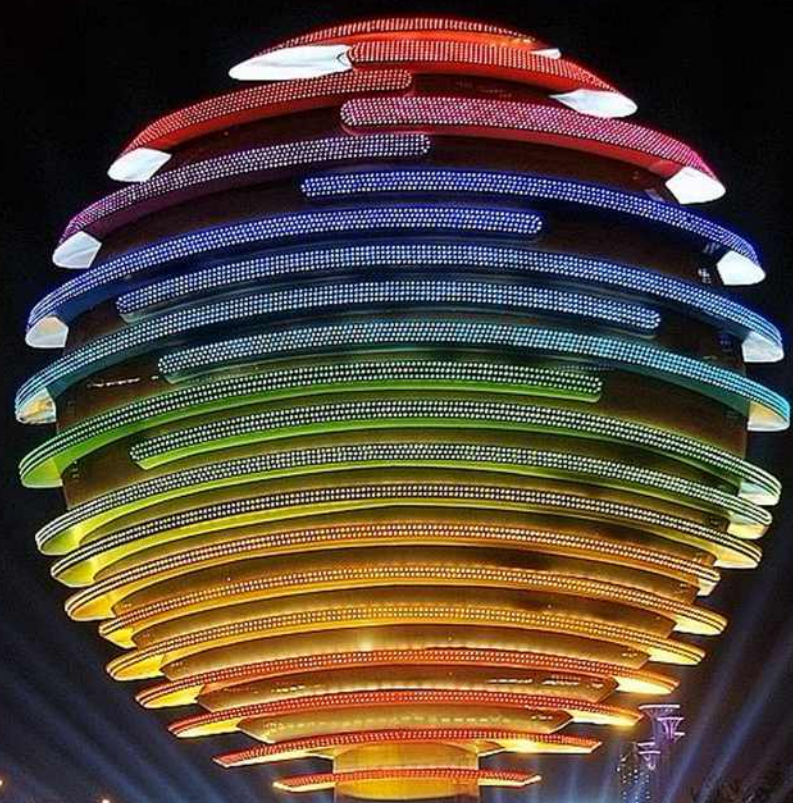


CHANNEL LETTER SOLUTION



Crystal LED Modules



Mini LED Modules



Features

Powered by high output 2835 LED.
Constant Voltage.
Diamondback 180°140° optic lens.
40/60 pcs per string.
CE, RoHS,UL,TUV, BIS, CB and LM-80 certified.

Color Temperature



Application

Apply to 3-8 cm depth illuminate letter or light box at airports, metros, banks, buildings and shopping malls, etc.

Specifications

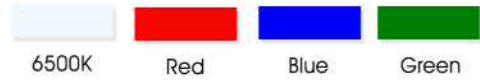
Part No.	Dimensions(mm)	Input Vol.	LED Qty/pcs	Power(W/pcs)	Lumen/lm	CCT/K	LED Type
ZE01CA1/ZE01CC1	14*9*8.8	12/24V	1	0.24	29	7000	2835
ZE02CA1/ZE02CC1	26*9*9	12/24V	2	0.48	55	7000	2835
ZE03CA1/ZE03CC1	38*9*9	12/24V	3	0.72	85	7000	2835

Projects



Crystal LED Modules

High Light Efficacy 200LM/W



Features

Powered by high output 2835 LED.
Constant current.
Integrated transparent 170° optic lens.
20 pcs per string.
CE, RoHS,UL,TUV, BIS, CB and LM-80 certified.

Application

Apply to 4-15 cm depth illuminate letter or light box at airports, metros, banks, buildings and shopping malls, etc.

Specifications

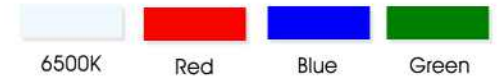
Part No.	Dimensions(mm)	Input Vol.	LED Qty/pcs	Power(W/pcs)	Lumen/lm	CCT/K	LED Type
ZE01CB3	25*20*10.3	12V	1	0.36	68	6200-6800	2835
ZE02CB3	50*14.6*10.3	12V	2	0.72	140	6200-6800	2835

Projects



Crystal LED Modules

High Light Efficacy 200LM/W



Features

Powered by high output 2835 LED.
Constant current.
Integrated transparent 170° optic lens.
20 pcs per string.
CE, RoHS,UL,TUV, BIS, CB and LM-80 certified.

Application

Apply to 4-15 cm depth illuminate letter or light box at airports, metros, banks, buildings and shopping malls, etc.

Specifications

Part No.	Dimensions(mm)	Input Vol.	LED Qty/pcs	Power(W/pcs)	Lumen/lm	CCT/K	LED Type
ZE03CB3	76*14.6*10.3	12V	3	1.08	210	6200-6800	2835
ZE04CB3	48*44*10.3	12V	4	1.2	220	6200-6800	2835

Projects



Crystal LED Modules



Powered by **Osram LED**



Features

- Powered by high output OSRAM LED.
- Constant current.
- Integrated transparent 170° optic lens.
- 50 pcs per string.
- CE, RoHS,UL,TUV, BIS, CB and LM-80 certified.

Application

Apply to 3-8 cm depth illuminate letter or light box at airports, metros, banks, buildings and shopping malls, etc.

Specifications

Part No.	Dimensions(mm)	Input Vol.	LED Qty/pcs	Power(W/pcs)	Lumen/lm	CCT/K	LED Type
ZR01QB1	27.8*15.4*10.4	12V	1	0.5	50	6500	OSRAM LED
ZR02QB1	52.8*15.4*10.4	12V	2	1	100	6500	OSRAM LED

Projects



Crystal LED Modules



Powered by **Osram LED**



Features

- Powered by high output OSRAM LED.
- Constant current.
- Integrated transparent 170° optic lens.
- 30 pcs per string.
- CE, RoHS,UL,TUV, BIS, CB and LM-80 certified.

Application

Apply to 6-15 cm depth illuminate letter or light box at airports, metros, banks, buildings and shopping malls, etc.

Specifications

Part No.	Dimensions(mm)	Input Vol.	LED Qty/pcs	Power(W/pcs)	Lumen/lm	CCT/K	LED Type
ZR03QB1	77.8*15.4*10.4	12V	3	1.5	150	6500	OSRAM LED
ZR04QB1	47.3*40.3*10.4	12V	4	2	200	6500	OSRAM LED

Projects



Diamondback LED Modules



Features

Powered by high output 2835 LED.
 Constant Voltage/Constant Current.
 Batwing diamondback 170° optic lens.
 20/50 PCS per string
 CE, RoHS,UL,TUV, BIS, CB and LM-80 certified.

Application

Apply to 4-15 cm depth illuminate letter or light box at airports, metros, banks, buildings and shopping malls, etc.

Specifications

Part No.	Dimensions(mm)	Input Vol.	LED Qty/pcs	Power(W/pcs)	Lumen/lm	CCT/K	LED Type
ZE01BA3	36*17.5*6.2	12V	1	0.4	40	7000	2835
ZE02BA3	56*17.5*6.2	12V	2	0.8	80	7000	2835

Projects



Diamondback LED Modules



Features

Powered by high output 2835 LED.
 Constant Voltage/Constant Current.
 Batwing diamondback 170° optic lens.
 20/50 PCS per string
 CE, RoHS,UL,TUV, BIS, CB and LM-80 certified.

Application

Apply to 4-15 cm depth illuminate letter or light box at airports, metros, banks, buildings and shopping malls, etc.

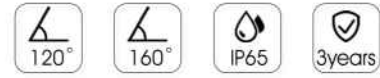
Specifications

Part No.	Dimensions(mm)	Input Vol.	LED Qty/pcs	Power(W/pcs)	Lumen/lm	CCT/K	LED Type
ZE03BA3	80*17.5*6.2	12V	3	1.2	120	7000	2835
ZE04BA3	45*43*6.2	12V	4	1.6	160	7000	2835

Projects



Basic LED Modules



Features

Powered by high output 2835 LED.
 Constant Voltage.
 Clear 120°/160° optic lens.
 20 pcs per string.
 CE, RoHS,UL,TUV, BIS, CB and LM-80 certified.

Application

Apply to 3-15 cm depth signs at airports, metros, banks, buildings and shopping malls, etc.

Specifications

Part No.	Dimensions(mm)	Input Vol.	LED Qty/pcs	Power(W/pcs)	Lumen/lm	CCT/K	LED Type
ZE02QAB	30*9*4.5	12V	2	0.32	20	7000	2835
ZE02QAC	50.5*15*7.2	12V	2	0.72	70	7000	2835

Projects



Basic LED Modules



Features

Powered by high output 2835 LED.
 Constant Voltage.
 Clear 160° optic lens.
 20 pcs per string.
 CE, RoHS,UL,TUV, BIS, CB and LM-80 certified.

Application

Apply to 8-15 cm depth signs at airports, metros, banks, buildings and shopping malls, etc.

Specifications

Part No.	Dimensions(mm)	Input Vol.	LED Qty/pcs	Power(W/pcs)	Lumen/lm	CCT/K	LED Type
ZE03QAC	74.5*15*7.2	12V	3	1	100	7000	2835
ZE03QAD	83*15*7.2	12V	3	1.5	145	7000	2835

Projects



Basic LED Modules



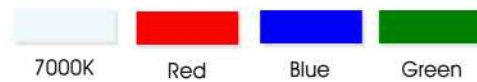
DC12V / 24V



Features

Powered by high output 2835 LED.
Constant current.
Clear 170° optic lens.
50 pcs per string.
CE, RoHS,UL,TUV, BIS, CB and LM-80 certified

Color Temperature



Application

Apply to 6-15 cm depth illuminate letter or light box at airports, metros, banks, buildings and shopping malls, etc.

Specifications

Part No.	Dimensions(mm)	Input Vol.	LED Qty/pcs	Power(W/pcs)	Lumen/lm	CCT/K	LED Type
ZE02QBE / ZE02QD1	66*18*7.3	12/24V	2	0.8	90	7000	2835
ZE03QBE / ZE03QD1	88*18*7.3	12/24V	3	1.2	140	7000	2835

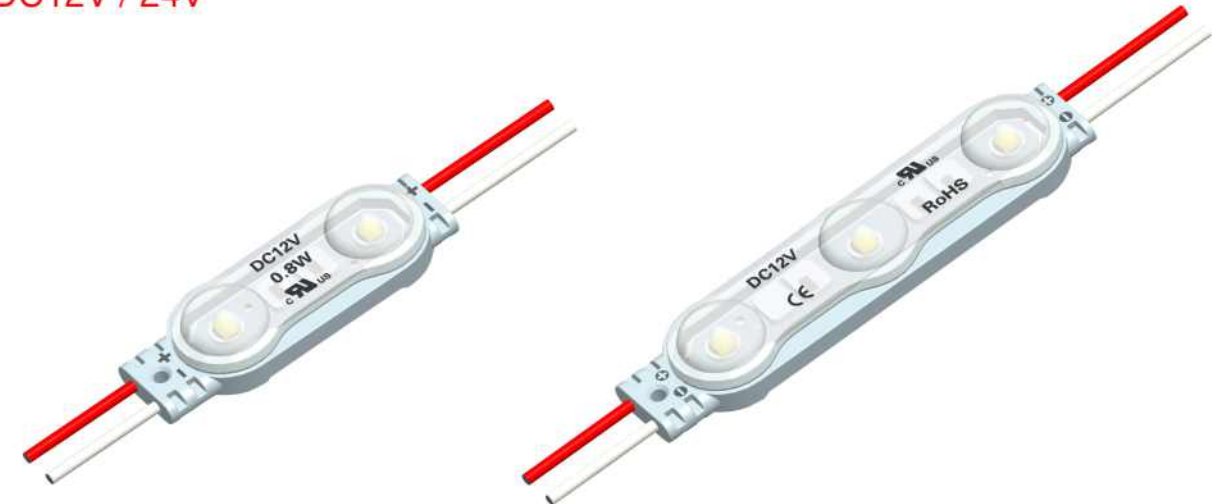
Projects



Integrated Transparent LED Modules

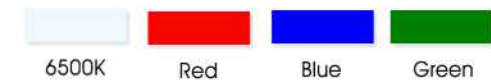


DC12V / 24V



Features

Powered by high output 2835 LED.
Constant voltage.
Integrated transparent 165°optic lens.
20 pcs per string.
CE, RoHS,UL,TUV, BIS, CB and LM-80 certified.



Application

Apply to 6-15 cm depth signs at airports, metros, banks, buildings and shopping malls, etc.

Specifications

Part No.	Dimensions(mm)	Input Vol.	LED Qty/pcs	Power(W/pcs)	Lumen/lm	CCT/K	LED Type
ZE02QAR / ZE02QC2	52*18.5*9.6	12/24V	2	0.8	84	3000K-6500	2835
ZE03QAR / ZE03QC2	78*18.5*9.6	12/24V	3	1.2	126	3000K-6500	2835

Projects



Addressable RGB LED Module



Features

Powered by 5050 RGB LED.
 Constant current.
 Clear 160° optic lens.
 20 pcs per string, 2048 pcs controllable in a series.
 Build-in IC TM1923 for automatic realization of RGB flow.
 CE, RoHS,UL,TUV, BIS, CB and LM-80 certified

Color Temperature



RGB

Application

Apply to 8-18 cm depth signs at airports, metros, banks, buildings and shopping malls, etc.

Specifications

Part No.	Dimensions(mm)	Input Vol.	LED Qty/pcs	Power(W/pcs)	Lumen/lm	CCT/K	LED Type
ZH03QA9	87*17.5*8.2	12V	3	0.76	R:6 G:17 B:4	RGB	5050

Projects



Basic LED Modules



Features

Powered by high output 5050 LED.
 Constant voltage.
 Clear 160° optic lens.
 20 pcs per string.
 CE, RoHS,UL,TUV, BIS, CB and LM-80 certified.

Color Temperature



RGB

RGBW

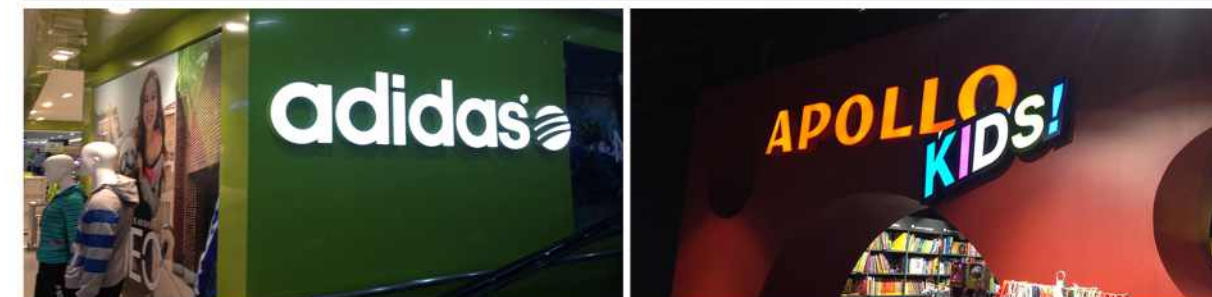
Application

Apply to 8-20 cm depth signs at airports, metros, banks, buildings and shopping malls, etc.

Specifications

Part No.	Dimensions(mm)	Input Vol.	LED Qty/pcs	Power(W/pcs)	Lumen/lm	CCT/K	LED Type
ZH03QA5	87*17.5*8.4	12V	3	0.65	R6 G22 B5	RGB	5050
ZH03QA8	87*17.5*8.4	12V	3	0.96	R6 G22 B5 W20	RGBW	5050

Projects



AC LED Modules I



AC110V / 220V



Features

Powered by high output 2835 LED.
 Constant current.
 Transparent 160° optic lens.
 50 pcs per string.
 CE, RoHS, TUV, BIS, CB and LM-80 certified.

Application

Apply to 6-15 cm depth single-sided light box at airports, metros, banks, buildings and shopping malls, etc.

Specifications

Part No.	Dimensions(mm)	Input Vol.	LED Qty/pcs	Power(W/pcs)	Lumen/lm	CCT/K	LED Type
ZE01QG2	46*19*8.16	110V	1	0.72	90	7000	2835
ZE02QG1	60*19*8.16	110V/220V	2	1.2	100	7000	2835

Projects



AC LED Modules I



AC110V / 220V



Features

Powered by high output 2835 LED.
 Constant current.
 Transparent 160° optic lens.
 50/20 pcs per string.
 CE, RoHS, TUV, BIS, CB and LM-80 certified.

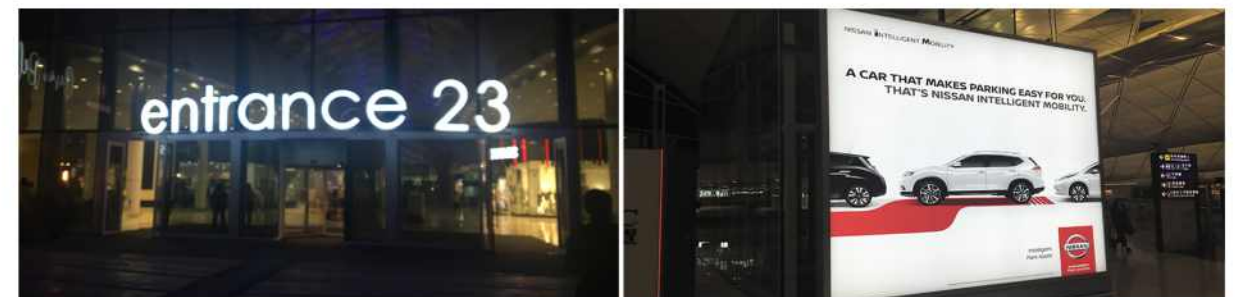
Application

Apply to 8-20 cm depth single-sided light box at airports, metros, banks, buildings and shopping malls, etc.

Specifications

Part No.	Dimensions(mm)	Input Vol.	LED Qty/pcs	Power(W/pcs)	Lumen/lm	CCT/K	LED Type
ZE03QG1	86*19*8.16	110V/220V	3	2	160	7000	2835
ZE04QG3	80*80*13	110V/220V	4	4	320	7000	2835

Projects

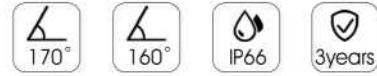


Apple iPhone X[®]



**BACK
LIGHTING
SOLUTION**

SlimBox LED Modules



Features

Powered by high output 2835/3030LED.
 Constant current.
 Batwing 170°/160°optic lens.
 50/20 pcs per string.
 CE, RoHS,UL,TUV, BIS, CB and LM-80 certified.

Application

Apply to 3.5-15 cm depth single-sided light box at airports, metros, banks, buildings and shopping malls, etc.

Specifications

Part No.	Dimensions(mm)	Input Vol.	LED Qty/pcs	Power(W/pcs)	Lumen/lm	CCT/K	LED Type
ZE01BB2	37*25.5*7.1	12V	1	0.72	55	7000	2835
ZF01BB2	43*23*7.8	12V	1	1.32	125	7000	3030

Projects



SlimBox LED Modules



Features

Powered by high output 2835 LED.
 Constant Current.
 Batwing 170°optic lens.
 38 pcs per string.
 CE, RoHS,UL,TUV, BIS, CB and LM-80 certified.



Application

Apply to 3.5-10 cm depth single-sided light box at airports, metros, banks, buildings and shopping malls, etc.

Specifications

Part No.	Dimensions(mm)	Input Vol.	LED Qty/pcs	Power(W/pcs)	Lumen/lm	CCT/K	LED Type
ZE01BA2	35*22.5*7.09	12V	1	0.72	55	7000	2835

Projects

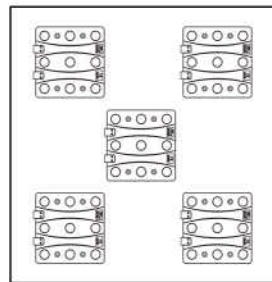


Matrix LED Modules



Features

Powered by high output 3030 LED.
 Constant current.
 Batwing 170° optic lens.
 9 pcs per string.
 CE, RoHS,UL,TUV, BIS, CB and LM-80 certified.



5PCS/M²

Application

Apply to 10-20 cm depth signs at airports, metros, banks, buildings and shopping malls, etc.

Specifications

Part No.	Dimensions(mm)	Input Vol.	LED Qty/pcs	Power(W/pcs)	Lumen/lm	CCT/K	LED Type
ZF09QB1	94*94*7.8	12V	9	7	650	7000	3030

Projects



Matrix LED Modules

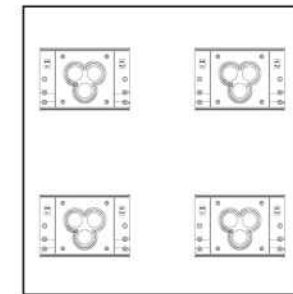


Powered by Seoul LED



Features

Powered by Seoul Y19 LED.
 Constant current.
 Low reflection 175° optic lens.
 SDCM≤3.
 12 pcs per string.
 CE, RoHS,UL,TUV, BIS, CB and LM-80 certified.



4PCS/M²

Application

Apply to 10-20 cm depth light box at airports, metros, banks, buildings and shopping malls, etc.

Specifications

Part No.	Dimensions(mm)	Input Vol.	LED Qty/pcs	Power(W/pcs)	Lumen/lm	CCT/K	LED Type
ZW03WB2	124*82*11	12V	3	7	600	7000	Seoul LED

Projects



CCT Changeable LED Modules



Features

- Powered by dual- CCT 3030 LED.
- Constant current.
- Diamondback 160° optic lens.
- 20 pcs per string.
- CE, RoHS, TUV, BIS, CB and LM-80 certified

Application

Apply to 10-18 cm depth signs at airports, metros, banks, buildings and shopping malls, etc.

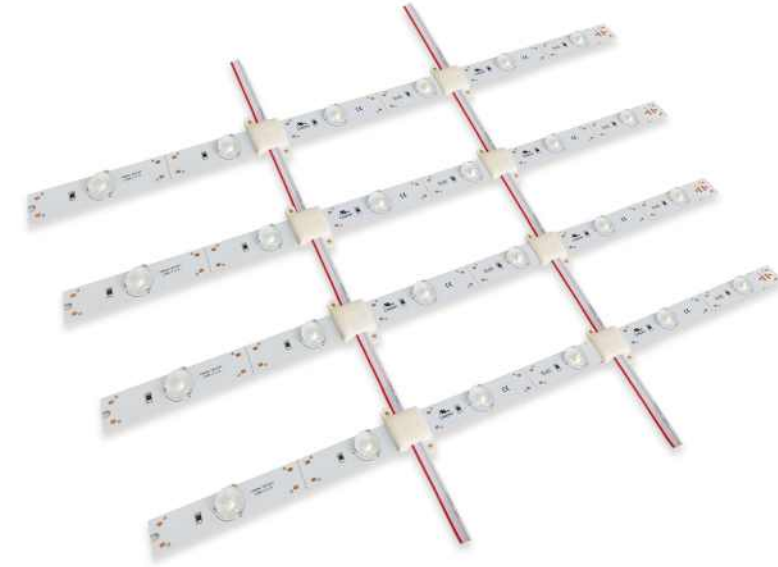
Specifications

Part No.	Dimensions(mm)	Input Vol.	LED Qty/pcs	Power(W/pcs)	Lumen/lm	CCT/K	LED Type
ZF04QD1	92*88*8.6	24V	4	4	240	3000-6500	3030

Projects



Roller LED Bars



Features

- Powered by high output 3030 LED.
- Constant Voltage.
- Diamondback 170° optic lens.
- 10 bars per roll.
- CE, RoHS, UL, TUV, BIS, CB and LM-80 certified.

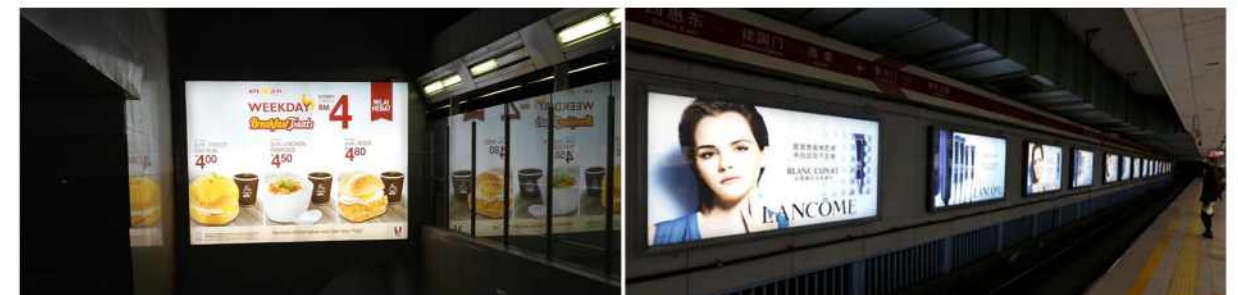
Application

Apply to 4-15 cm depth single-sided light box at airports, metros, banks, buildings and shopping malls, etc.

Specifications

Part No.	Dimensions(mm)	Input Vol.	LED Qty/pcs	Power(W/pcs)	Lumen/lm	CCT/K	LED Type
YF06LA1-48-F0	480*17*6.3	12V	6	6	600	7000	3030
YF12LA1-96-F0	960*17*6.3	12V	12	12	1200	7000	3030

Projects



SlimBox LED Modules



Features

Powered by high output 3535 LED.
 Constant Voltage.
 Batwing 160° optic lens.
 16 pcs per string.
 CE, RoHS, UL, TUV, BIS, CB and LM-80 certified.

Application

Apply to 12-20cm depth single-sided light box at airports, metros, banks, buildings and shopping malls, etc.

Specifications

Part No.	Dimensions(mm)	Input Vol.	LED Qty/pcs	Power(W/pcs)	Lumen/lm	CCT/K	LED Type
ZX01SA1	64*42*11.8	12V	1	3	270	6500-7300K	3535

Projects



SlimBox LED Modules



Features

Powered by high output 2835 LED.
 Constant Current.
 Dome 170° optic lens.
 10 pcs per roll
 CE, RoHS, UL, TUV, BIS, CB and LM-80 certified.

Application

Apply to 3.5-10 cm depth single-sided light box at airports, metros, banks, buildings and shopping malls, etc.

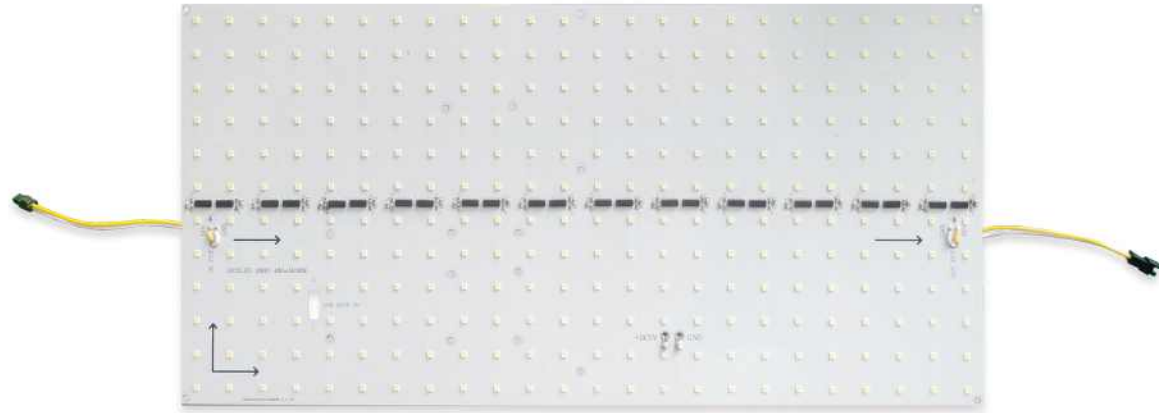
Specifications

Part No.	Dimensions(mm)	Input Vol.	LED Qty/pcs	Power(W/pcs)	Lumen/lm	CCT/K	LED Type
YF12LA3-96-F0	960*17*6.3	12V	12	12	1000	6000-13000	2835

Projects



Programmable LED Panel P20



Features

- Powered by high output SMD 2835.
- Constant current.
- DC5V input, 20mm pitch.
- Each led works as a unit and controlled by its own IC.
- The performance of the whole panel will not be affected by a single failed led.
- CE, RoHS,UL,TUV, BIS, CB and LM-80 certified.

Application

Apply to 6-15cm depth programmable back lighting light box, billboard, banner, and displays, etc.

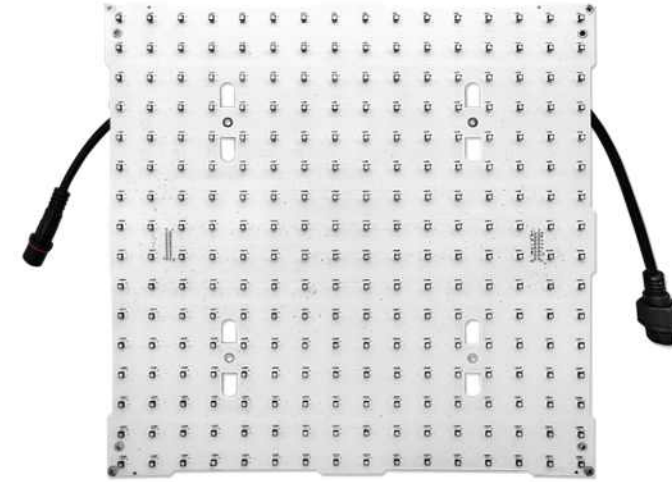
Specifications

Part No.	Dimensions(mm)	Input Vol.	LED Qty/pcs	Power(W/pcs)	Lumen/lm	CCT/K	LED Type
ZES8LF1	480*240*20	5V	288	25	2700	8000-10000	SMD2835

Projects



Programmable LED Panel RGB P20



Features

- Powered by high output 3535 RGB.
- Constant current.
- DC5V input, 20mm pitch.
- Each led works as a unit and controlled by its own IC.
- The performance of the whole panel will not be affected by a single failed led.
- CE, RoHS,UL,TUV, BIS, CB and LM-80 certified.

Color Temperature



Application

Apply to 6-15cm depth programmable back lighting light box, billboard, banner, and displays, etc.

Specifications

Part No.	Dimensions(mm)	Input Vol.	LED Qty/pcs	Power(W/pcs)	Lumen/lm	CCT/K	LED Type
ZX256LF1	320*320*20	5V	256	23	/	RGB	3535

Projects



Double-sided LED Rigid Strip



Features

Powered by high output 2835 LED
 Constant current.
 Batwing 160° optic lens
 Illumination is more than 3000lux.
 CE, RoHS, UL, TUV, BIS, CB and LM-80 certified.

Application

Apply to 8-16 cm depth double-sided light box at airports, metros, banks, buildings and shopping malls, etc.

Specifications

Part No.	Dimensions(mm)	Input Vol.	LED Qty/pcs	Power(W/pcs)	Lumen/lm	CCT/K	LED Type
YE24KD2	967*40*15	24V	24	18	1600	6000-6500	2835

Projects



LED Rigid Strip



Features

Powered by high lumen Samsung LED.
 Driven with constant current regulator IC.
 Adopt aluminum shell for heat dissipation.
 Standard waterproof connector.
 20pcs max run in a series.
 CE, RoHS, UL, TUV, BIS, CB and LM-80 certified

Application

Apply to 12-20 cm depth backlighting light box at airports, metros, banks, buildings and shopping malls, etc.

Specifications

Part No.	Dimensions(mm)	Input Vol.	LED Qty/pcs	Power(W/pcs)	Lumen/lm	CCT/K	LED Type
YE24ZD1	1512*16*8	24V	24	7	910	6500±500K	Samsung LED.

Projects



Diamondback LED Rigid Bars

Powered by Seoul LED



Features

- Powered by high output 3030 Seoul LED.
- Constant current.
- Batwing 160°optic lens.
- Maximum running connection is 20/15/10/8pcs.
- 1.6mm thickness aluminum base for better heat dissipation.
- CE, RoHS,UL,TUV, BIS, CB and LM-80 certified.

Application

- Apply to 6-15cm depth single-sided light box at airports, metros,banks, buildings and shopping malls, etc

Specifications

Part No.	Dimensions(mm)	Input Vol.	LED Qty/pcs	Power(W/pcs)	Lumen/lm	CCT/K	LED Type
YF03LD1	213*20*8.5	24V	3	3	300	6000-6500	Seoul LED
YF06LD1	462*20*8.5	24V	6	6	600	6000-6500	Seoul LED

Projects



Diamondback LED Rigid Bars

Powered by Seoul LED



Features

- Powered by high output 3030 Seoul LED.
- Constant current.
- Batwing 160°optic lens.
- Maximum running connection is 20/15/10/8pcs.
- 1.6mm thickness aluminum base for better heat dissipation.
- CE, RoHS,UL,TUV, BIS, CB and LM-80 certified.

Application

- Apply to 6-15cm depth single-sided light box at airports, metros,banks, buildings and shopping malls, etc

Specifications

Part No.	Dimensions(mm)	Input Vol.	LED Qty/pcs	Power(W/pcs)	Lumen/lm	CCT/K	LED Type
YF09LD1	711*20*8.5	24V	9	9	900	6000-6500	Seoul LED
YF12LD1	960*20*8.5	24V	12	12	1200	6000-6500	Seoul LED

Projects



EDGE-LIT SOLUTION



Innovation that excites

"I JUST FLOAT ALONG."
Pat M, USA, LEAF Owner

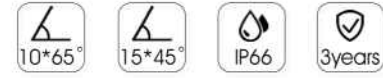


100% ELECTRIC NISSAN LEAF.
ELECTRIFY THE WORLD.

Model may vary by region.

#NISSAN

SidePod LED Modules



Features

- Powered by high output 3030 LED.
- Constant Current.
- Elliptical 10x65/15x45 optic lens.
- 20/10 pcs per string.
- CE, RoHS,UL,TUV, BIS, CB and LM-80 certified.

Application

- Light coverage: 0.5-1.5M.
- Apply to 10-20 cm depth double-sided light box at airports, metros, banks, buildings and shopping malls, etc.

Specifications

Part No.	Dimensions(mm)	Input Vol.	LED Qty/pcs	Power(W/pcs)	Lumen/lm	CCT/K	LED Type
ZF01BB3	43*23*11.6	12V	1	1.32	125	7000	3030
ZF03BB1	74*20*9.8	12V	3	2.5	250	7000	3030

Projects



SidePod LED Modules



Features

- Powered by high output 3535 LED.
- Constant Current.
- Elliptical 10x65/5x30 optic lens.
- 15 pcs per string.
- CE, RoHS,UL,TUV, BIS, CB and LM-80 certified.

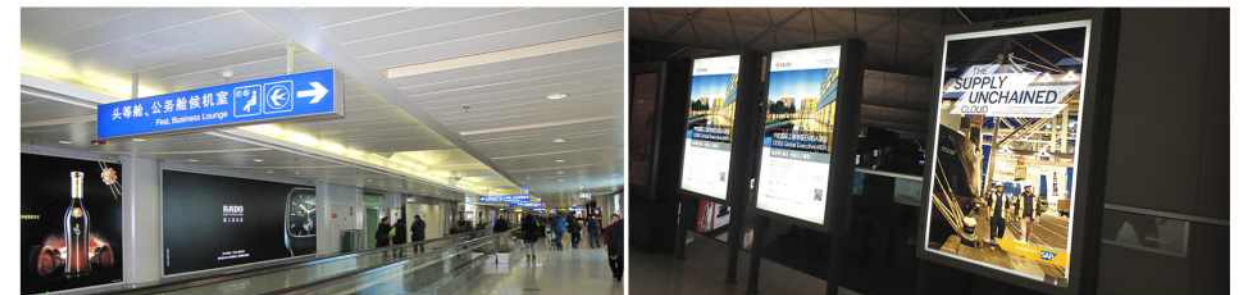
Application

- Light coverage: 0.5-1.5M.
- Apply to 8-20 cm depth double-sided light box at airports, metros, banks, buildings and shopping malls, etc.

Specifications

Part No.	Dimensions(mm)	Input Vol.	LED Qty/pcs	Power(W/pcs)	Lumen/lm	CCT/K	LED Type
ZX01BB2	45*32*14.8	12V	1	2.5	250	7000	3535
ZX01SB4	66*33*18	12V	1	3.5	310	6000-7000K	3535

Projects



SidePod LED Modules

Powered by LG LED



Features

- Powered by high output LG LED.
- Constant current.
- Elliptical 10x40 optic lens.
- 20/10 pcs string.
- CE, RoHS,UL,TUV, BIS, CB and LM-80 certified.

Application

- Light coverage: 0.5-3M.
- Apply to 8-30 cm depth double-sided light box at airports, metros, banks, buildings and shopping malls, etc.

Specifications

Part No.	Dimensions(mm)	Input Vol.	LED Qty/pcs	Power(W/pcs)	Lumen/lm	CCT/K	LED Type
ZX01QB3	68*30*15	12-24V	1	2.5	260	7000	LG LED
ZX03QB3	142*30*15	12-24V	3	6.5	780	7000	LG LED

Projects



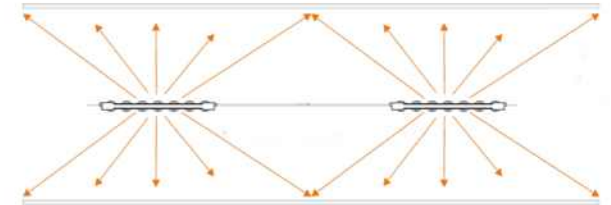
Double-Sided LED Modules

Powered by Osram LED



Features

- Powered by high output OSRAM LED.
- Constant current.
- Batwing 170° optic lens.
- 20 pcs string
- Double-sided LED module.
- CE, RoHS,UL,TUV, BIS, CB and LM-80 certified.



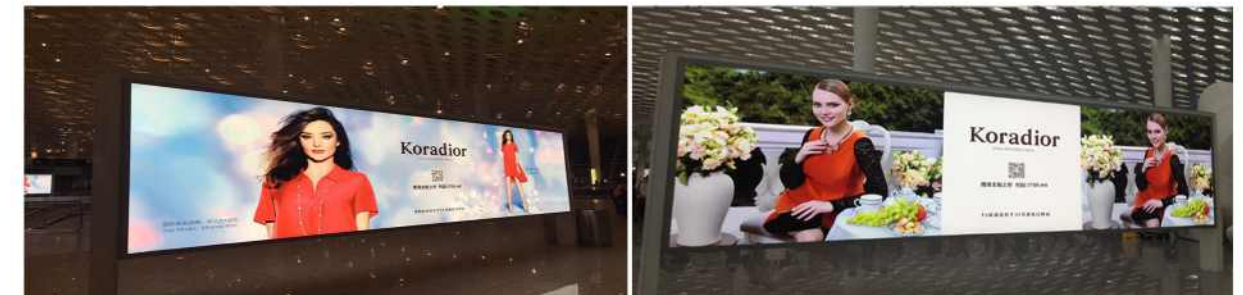
Application

- Apply to 12-30 cm depth double-sided light box at airports, metros, banks, buildings and shopping malls, etc.

Specifications

Part No.	Dimensions(mm)	Input Vol.	LED Qty/pcs	Power(W/pcs)	Lumen/lm	CCT/K	LED Type
ZR12QD1	150*40*12.7	24V	12	5	525	3000-6500	OSRAM LED
ZR16QD1	160*42*12.7	24V	16	5	600	6500	OSRAM LED

Projects



SidePod LED Modules



Features

Powered by high output 3535 LED.
 Constant current.
 Elliptical 10*40 optic lens.
 CE, RoHS,UL,TUV, BIS, CB and LM-80 certified

Application

Apply to 10-30 cm depth double-sided light box at airports, metros,banks, buildings and shopping malls, etc

Specifications

Part No.	Dimensions(mm)	Input Vol.	LED Qty/pcs	Power(W/pcs)	Lumen/lm	CCT/K	LED Type
ZX03QB5	159*30*22.5	12V	3	5	550	6500-7300K	3535

Projects



SidePod LED Modules



Features

Powered by high output 3535 LED.
 Constant current.
 Elliptical 5*30 optic lens.
 20 pcs per string.
 CE, RoHS,UL,TUV, BIS, CB and LM-80 certified.

Application

Light coverage: 2.5M.
 Apply to 10-15 cm depth double-sided light box at airports, metros,banks, buildings and shopping malls, etc.

Specifications

Part No.	Dimensions(mm)	Input Vol.	LED Qty/pcs	Power(W/pcs)	Lumen/lm	CCT/K	LED Type
ZX01SB4	66*33*18	12V	1	3.5	310	6000-7000	3535

Projects



SideLit LED Bars

Powered by **Osram LED**



Features

- Powered by high output OSRAM LED.
- Constant current.
- Classical 15x45 optic lens.
- 20/10 pcs per string.
- CE, RoHS,UL,TUV, BIS, CB and LM-80 certified.

Application

- Light coverage: 1-3M.
- Apply to 10-30 cm depth double-sided light box or 10-20cm depth single-sided light box at airports, metros, banks, buildings and shopping malls, etc.

Specifications

Part No.	Dimensions(mm)	Input Vol.	LED Qty/pcs	Power(W/pcs)	Lumen/lm	CCT/K	LED Type
YX03DD1	295*27.5*15.6	24V	3	9	850	6500	OSRAM LED
YX05DD1	495*27.5*15.6	24V	5	15	1500	6500	OSRAM LED

Projects



SideLit LED Bars

Powered by **Osram LED**



Features

- Powered by high output OSRAM LED.
- Constant current.
- Elliptical 15x45 optic lens.
- 15/10/7 pcs per string.
- CE, RoHS,UL,TUV, BIS, CB and LM-80 certified.



Application

- Light coverage: 1-3M.
- Apply to 8-30 cm depth double-sided light box at airports, metros, banks, buildings and shopping malls, etc.

Specifications

Part No.	Dimensions(mm)	Input Vol.	LED Qty/pcs	Power(W/pcs)	Lumen/lm	CCT/K	LED Type
YX03DD8	210*25*15	24V	3	7.5	750	6500	OSRAM LED
YX05DD8	350*25*15	24V	5	12.5	1350	6500	OSRAM LED
YX06DD8	420*25*15	24V	6	15	1650	6500	OSRAM LED

Projects



SideLit LED Bars

Powered by **Osram LED**



Features

Powered by high output OSRAM LED.
Constant Voltage.
Classical 15x45 optic lens.
4 pcs per string.
CE, RoHS,UL,TUV, BIS, CB and LM-80 certified.



Application

- Light coverage: 0.5-1.5M.
- Apply to 8-12 cm depth double-sided light box at airports, metros, banks, buildings and shopping malls, etc.

Specifications

Part No.	Dimensions(mm)	Input Vol.	LED Qty/pcs	Power(W/pcs)	Lumen/lm	CCT/K	LED Type
YF18LD1	955*25*16.5	24V	18	18	1800	6500	OSRAM LED

Projects



SideLit LED Bars

Powered by **CREE LED**



Features

Powered by high output 3535 CREE LED.
Constant current.
Elliptical 8x15 optic lens.
8 pcs string.
CE, RoHS,UL,TUV, BIS, CB and LM-80 certified.



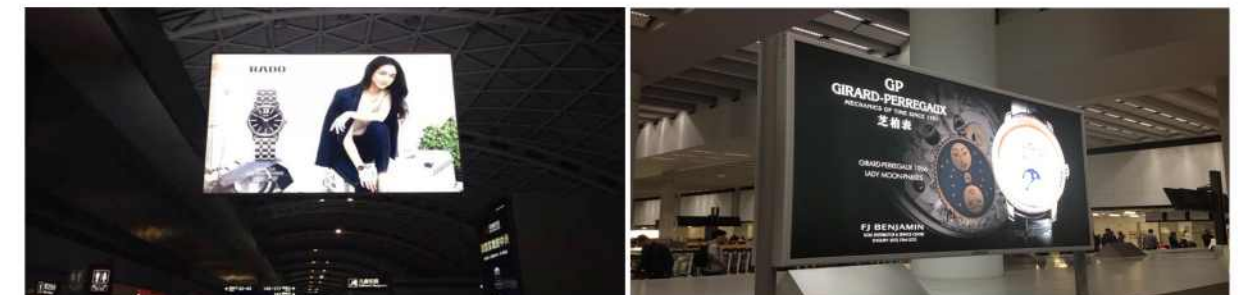
Application

- Light coverage: 1-3M.
- Apply to 8-15 cm depth double-sided light box or 6-12cm depth single-sided light box at airports, metros, banks, buildings and shopping malls, etc.

Specifications

Part No.	Dimensions(mm)	Input Vol.	LED Qty/pcs	Power(W/pcs)	Lumen/lm	CCT/K	LED Type
YX09LD1	450*26*14	24V	9	21	1700	6500K	CREE LED

Projects



RGB SideLit LED Bars



Features

- Powered by high output 3535 LED.
- Constant current.
- Dome 30 optic lens.
- 4 pcs per string.
- CE, RoHS,UL,TUV, BIS, CB and LM-80 certified.

Application

- Light coverage: 0.5-2M.
- Apply to 10-30 cm depth double-sided light box or 6-12cm depth single-sided light box at airports, metros, banks, buildings and shopping malls, etc.

Specifications

Part No.	Dimensions(mm)	Input Vol.	LED Qty/pcs	Power(W/pcs)	Lumen/lm	CCT/K	LED Type
YX06LD1-Q02	495*27.5*15.6	24V	6	22.5	/	RGB	3535 LED

Projects



AC SideLit Bars



Powered by **Osram LED**
AC110-220V



Features

- Powered by high output OSRAM LED.
- Switch constant current.
- Classical 10x45 optic lens.
- 20 pcs per string.
- Fire resistance UL94V-0.
- CE, RoHS,TUV, BIS, CB and LM-80 certified.



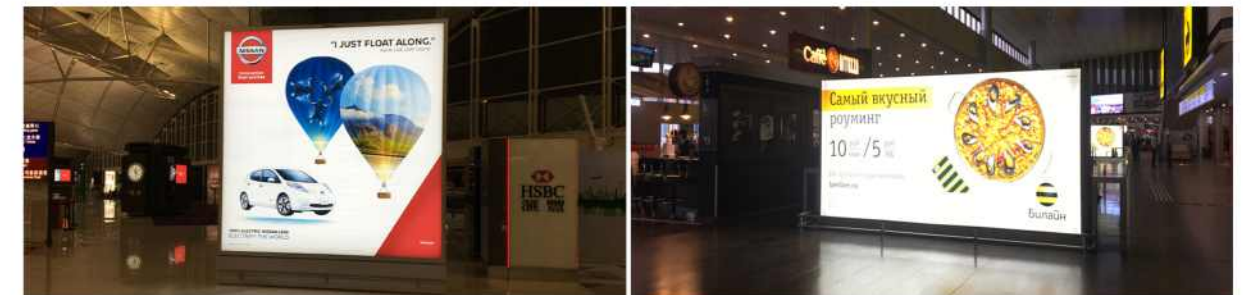
Application

- Light coverage: 1-3M.
- Apply to 10-30 cm depth double-sided light box at airports, metros, banks, buildings and shopping malls, etc.

Specifications

Part No.	Dimensions(mm)	Input Vol.	LED Qty/pcs	Power(W/pcs)	Lumen/lm	CCT/K	LED Type
YX06KG2	495*32.4*23.3	AC110-220V	6	18	1450	6500	OSRAM LED

Projects



SideLit LED Bars- 2M Light Coverage

Powered by **CREE LED**



Features

- Powered by high output 3535 CREE LED
- Constant current.
- Elliptical 8x15 optic lens.
- 3 pcs per string.
- CE, RoHS,UL,TUV, BIS, CB and LM-80 certified

Application

- Light coverage: 1-2M.
- Apply to 10-18 cm depth double-sided light box at airports, metros, banks, buildings and shopping malls, etc

Specifications

Part No.	Dimensions(mm)	Input Vol.	LED Qty/pcs	Power(W/pcs)	Lumen/lm	CCT/K	LED Type
YX15KD1	945*34*16	24V	15	30	2600	6000-7000	CREE LED

Projects



SideLit LED Bars- 3M Light Coverage

Powered by **CREE LED**



Features

- Powered by high output 3535 CREE LED
- Constant current.
- Elliptical 8x15 optic lens.
- 3 pcs per string.
- CE, RoHS,UL,TUV, BIS, CB and LM-80 certified

Application

- Light coverage: 1-3M.
- Apply to 10-18 cm depth double-sided light box at airports, metros, banks, buildings and shopping malls, etc

Specifications

Part No.	Dimensions(mm)	Input Vol.	LED Qty/pcs	Power(W/pcs)	Lumen/lm	CCT/K	LED Type
YX18KD1	966*34*16	24V	18	36	2900	6000-7000	CREE LED

Projects



FLEX LINEAR LIGHT

LBY LED provide different IP graded strips

IP20 Non-proof



Indoor

IP55 Glue coating



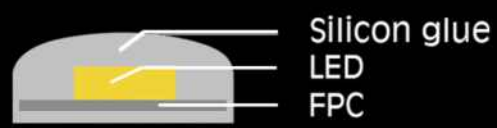
In humid air

IP65 Silicon pipe



In rain

IP68 Silicon



In water

LBY LED provide full CCT range from 2300K to 6500K



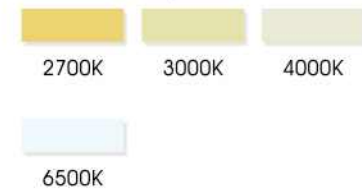
Powered by Osram LED Strips (60 LEDs/m)



Features

Powered by high output OSRAM LED.
 CRI > 80/90.
 SDCM ≤ 3.
 Double layer rolled copper FPC.
 3M 300LSE tape attached.
 CE, RoHS, UL, TUV, BIS, CB and LM-80 certified.

Color Temperature



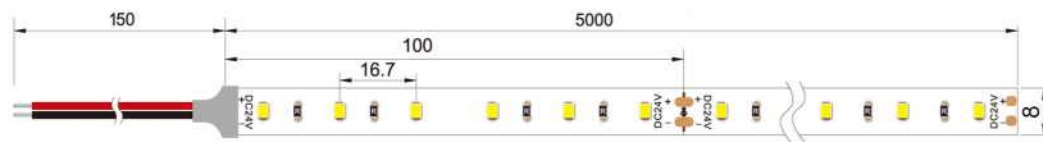
Application

City lighting, landscape lighting, commercial lighting and house contour lighting, etc.

Specifications

Part No.	Dimensions(mm)	Input Vol.	LED Qty/M	Power(W/M)	LM/M	CCT/K	IP
SR60LA1	5000*8	12/24V	60	12	1200	2700-6500	IP20

Dimensions



Projects



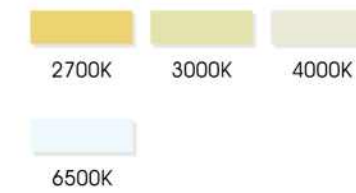
Powered by Osram LED Strips (120 LEDs/m)



Features

Powered by high output OSRAM LED.
 CRI > 80/90.
 SDCM ≤ 3.
 Double layer rolled copper FPC.
 3M 300LSE tape attached.
 CE, RoHS, UL, TUV, BIS, CB and LM-80 certified.

Color Temperature



Application

City lighting, landscape lighting, commercial lighting and house contour lighting, etc.

Specifications

Part No.	Dimensions(mm)	Input Vol.	LED Qty/M	Power(W/M)	LM/M	CCT/K	IP
SRCOLA1	5000*8	12/24V	120	15	1500	2700-6500	IP20

Dimensions



Projects



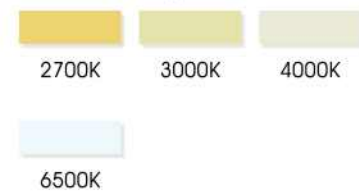
Powered by Osram LED Strips (180 LEDs/m)



Features

Powered by high output OSRAM LED.
 CRI > 80/90.
 SDCM ≤ 3.
 Double layer rolled copper FPC.
 3M 300LSE tape attached.
 CE, RoHS, UL, TUV, BIS, CB and LM-80 certified.

Color Temperature



Application

City lighting, landscape lighting, commercial lighting and house contour lighting, etc.

Specifications

Part No.	Dimensions(mm)	Input Vol.	LED Qty/M	Power(W/M)	LM/M	CCT/K	IP Grade
SRIOLC1	5000*10	24V	180	18	1800	2700-6500	IP20

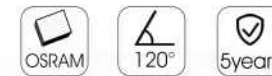
Dimensions



Projects



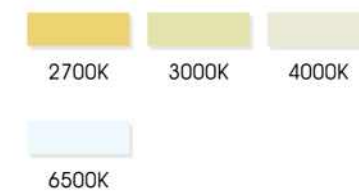
Powered by Osram LED Strips (240 LEDs/m)



Features

Powered by high output OSRAM LED.
 CRI > 80/90.
 SDCM ≤ 3.
 Double layer rolled copper FPC.
 3M 300LSE tape attached.
 CE, RoHS, UL, TUV, BIS, CB and LM-80 certified.

Color Temperature



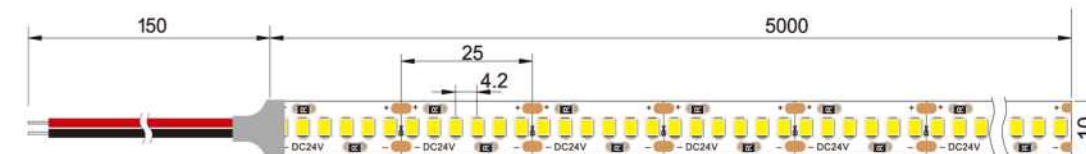
Application

City lighting, landscape lighting, commercial lighting and house contour lighting, etc.

Specifications

Part No.	Dimensions(mm)	Input Vol.	LED Qty/M	Power(W/M)	LM/M	CCT/K	IP Grade
SROOLC1	5000*10	24V	240	24	2400	2700-6500	IP20

Dimensions



Projects



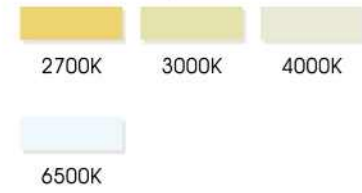
High Density 2216 LED Strips (180 LEDs/m)



Features

Powered by high output 2216 LED.
 CRI > 80/90.
 SDCM ≤ 3.
 Double layer rolled copper FPC.
 3M 300LSE tape attached.
 CE, RoHS, UL, TUV, BIS, CB and LM-80 certified.

Color Temperature



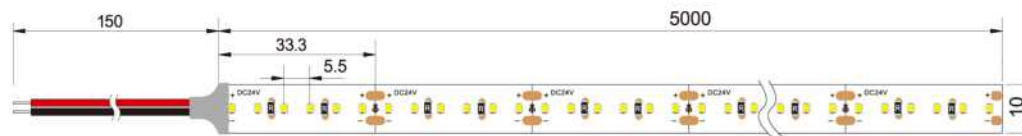
Application

City lighting, landscape lighting, commercial lighting and house contour lighting, etc.

Specifications

Part No.	Dimensions(mm)	Input Vol.	LED Qty/M	Power(W/M)	LM/M	CCT/K	IP Grade
SZ10LC1	5000*10	24V	180	12	1050	2700-6500	IP20

Dimensions



Projects



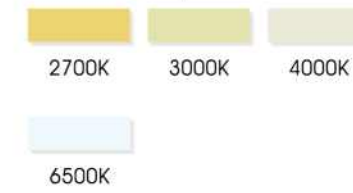
High Density 2216 LED Strips (240 LEDs/m)



Features

Powered by high output 2216 LED.
 CRI > 80/90.
 SDCM ≤ 3.
 Double layer rolled copper FPC.
 3M 300LSE tape attached.
 CE, RoHS, UL, TUV, BIS, CB and LM-80 certified.

Color Temperature



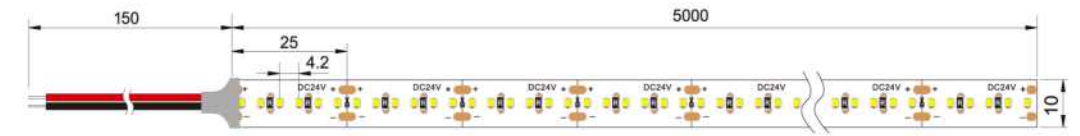
Application

City lighting, landscape lighting, commercial lighting and house contour lighting, etc.

Specifications

Part No.	Dimensions(mm)	Input Vol.	LED Qty/M	Power(W/M)	LM/M	CCT/K	IP Grade
SZ00LC1	5000*10	24V	240	16	1400	2700-6500	IP20

Dimensions



Projects



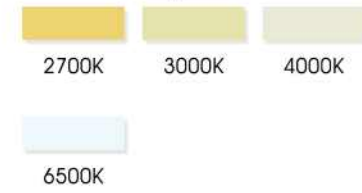
High Density 2216 LED Strips (300 LEDs/m)



Features

Powered by high output 2216 LED.
 CRI > 80/90.
 SDCM ≤ 3.
 Double layer rolled copper FPC.
 3M 300LSE tape attached.
 CE, RoHS, UL, TUV, BIS, CB and LM-80 certified.

Color Temperature



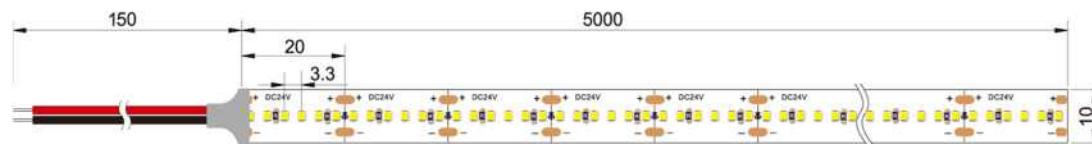
Application

City lighting, landscape lighting, commercial lighting and house contour lighting, etc.

Specifications

Part No.	Dimensions(mm)	Input Vol.	LED Qty/M	Power(W/M)	LM/M	CCT/K	IP Grade
SZ300LC1	5000*10	24V	300	18	1600	2700-6500	IP20

Dimensions



Projects



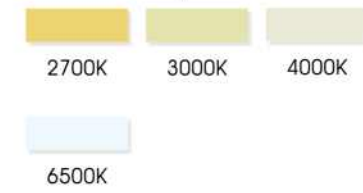
High Density 2216 LED Strips (396 LEDs/m)



Features

Powered by high output 2216 LED.
 CRI > 80/90.
 SDCM ≤ 3.
 Double layer rolled copper FPC.
 3M 300LSE tape attached.
 CE, RoHS, UL, TUV, BIS, CB and LM-80 certified.

Color Temperature



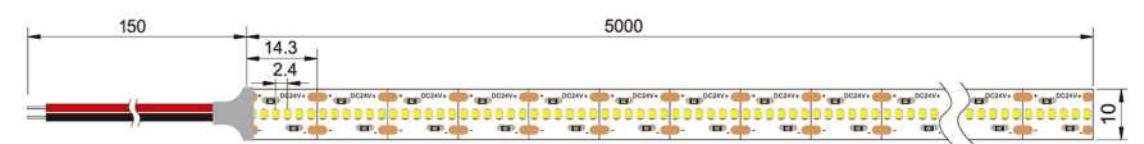
Application

City lighting, landscape lighting, commercial lighting and house contour lighting, etc.

Specifications

Part No.	Dimensions(mm)	Input Vol.	LED Qty/M	Power(W/M)	LM/M	CCT/K	IP Grade
SZ396LC1	5000*10	24V	396	21	1800	2700-6500	IP20

Dimensions



Projects



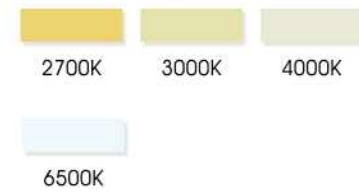
2835 LED Strips (60 LEDs/m)



Features

Powered by high output 2835 LED.
 CRI > 80/90.
 SDCM ≤ 3.
 Double layer rolled copper FPC.
 3M 300LSE tape attached.
 CE, RoHS, UL, TUV, BIS, CB and LM-80 certified.

Color Temperature



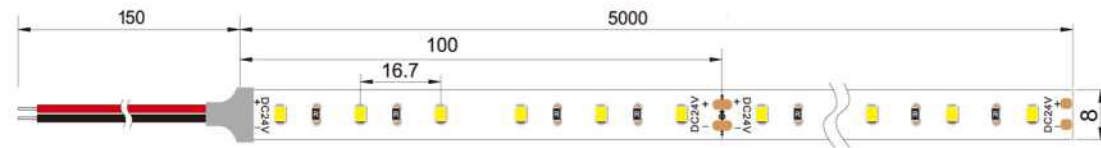
Application

City lighting, landscape lighting, commercial lighting and house contour lighting, etc.

Specifications

Part No.	Dimensions(mm)	Input Vol.	LED Qty/M	Power(W/M)	LM/M	CCT/K	IP Grade
SE60LA1	5000*8	12/24V	60	12	1200	2700-6500	IP20
SE60JA1	5000*10	12/24V	60	12	1150	2700-6500	IP68

Dimensions



Projects



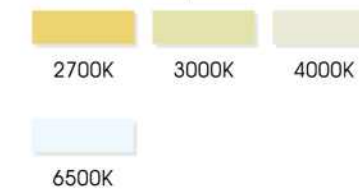
2835 LED Strips (120 LEDs/m)



Features

Powered by high output 2835 LED.
 CRI > 80/90.
 SDCM ≤ 3.
 Double layer rolled copper FPC.
 3M 300LSE tape attached.
 CE, RoHS, UL, TUV, BIS, CB and LM-80 certified.

Color Temperature



Application

City lighting, landscape lighting, commercial lighting and house contour lighting, etc.

Specifications

Part No.	Dimensions(mm)	Input Vol.	LED Qty/M	Power(W/M)	LM/M	CCT/K	LED Type
SEC0LA1	5000*8	12/24V	120	15	1500	2700-6500	IP20
SEC0JA1	5000*10	12/24V	120	15	1450	2700-6500	IP68

Dimensions



Projects



5050 LED Strips (30 LEDs/m)



Features

Powered by high output 5050 LED with uniform illumination.
 CRI>80/90.
 SDCM≤3.
 Double layer rolled copper FPC.
 3M 300LSE tape attached.
 CE, RoHS,UL,TUV, BIS, CB and LM-80 certified.

Color Temperature



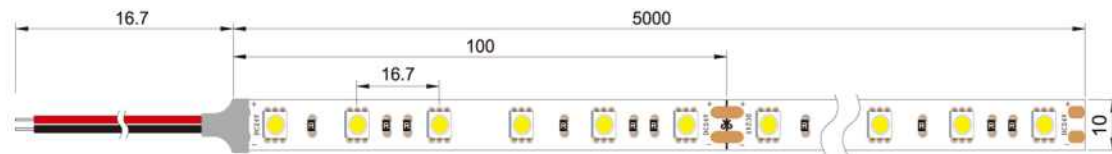
Application

City lighting, landscape lighting, commercial lighting and house contour lighting, etc.

Specifications

Part No.	Dimensions(mm)	Input Vol.	LED Qty/M	Power(W/M)	LM/M	CCT/K	IP Grade
SH30LA1	5000*10	12/24V	30	6	600	2700-6500	IP20
SH30JA1	5000*12	12/24V	30	6	580	2700-6500	IP68

Dimensions



Projects



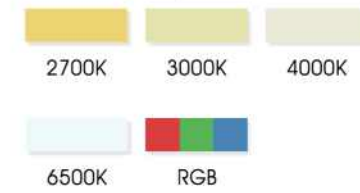
5050 LED Strips (60 LEDs/m)



Features

Powered by high output 5050 LED with uniform illumination.
 CRI>80/90.
 SDCM≤3.
 Double layer rolled copper FPC.
 3M 300LSE tape attached.
 CE, RoHS,UL,TUV, BIS, CB and LM-80 certified.

Color Temperature



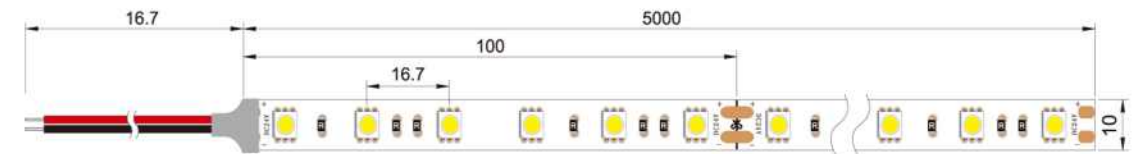
Application

City lighting, landscape lighting, commercial lighting and house contour lighting, etc.

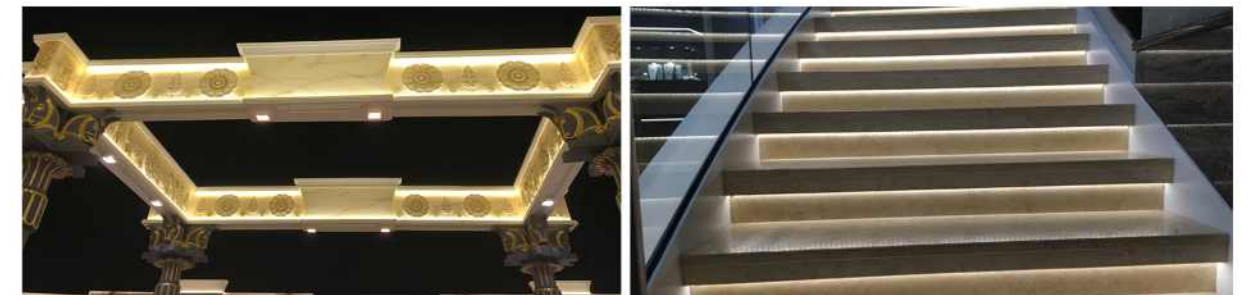
Specifications

Part No.	Dimensions(mm)	Input Vol.	LED Qty/M	Power(W/M)	LM/M	CCT/K	IP Grade
SH60LA1	5000*10	12/24V	60	12	1200	2700-6500	IP20
SH60JA1	5000*12	12/24V	60	12	1150	2700-6500	IP68

Dimensions



Projects



Dual CCT 2835 LED Strips (120 LEDs/m)

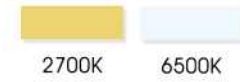


Features

Powered by high output 2835 LED.
 CRI > 80/90.
 SDCM ≤ 3.
 Double layer rolled copper FPC.
 3M 300LSE tape attached.
 CE, RoHS, UL, TUV, BIS, CB and LM-80 certified.



Color Temperature



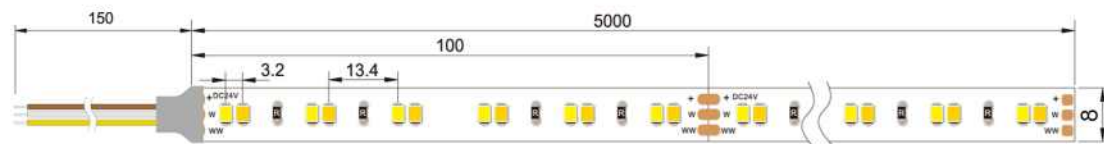
Application

City lighting, landscape lighting, commercial lighting and house contour lighting, etc.

Specifications

Part No.	Dimensions(mm)	Input Vol.	LED Qty/M	Power(W/M)	LM/M	CCT/K	IP Grade
SEC0LA1-DW	5000*8	12V/24V	120	15	1200	2700/6500	IP20

Dimensions



Projects



Dual CCT 5050 LED Strips (60 LEDs/m)



Features

Powered by high output 5050 LED.
 CRI > 80/90.
 SDCM ≤ 3.
 Double layer rolled copper FPC.
 3M 300LSE tape attached.
 CE, RoHS, UL, TUV, BIS, CB and LM-80 certified.



Color Temperature



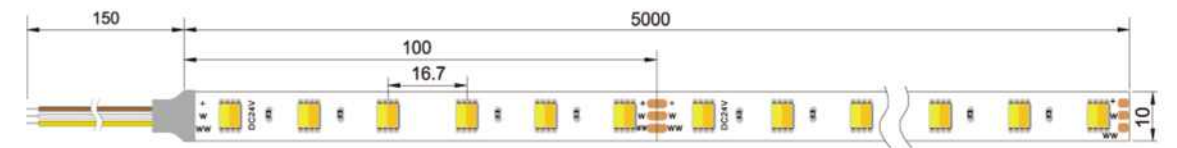
Application

City lighting, landscape lighting, commercial lighting and house contour lighting, etc.

Specifications

Part No.	Dimensions(mm)	Input Vol.	LED Qty/M	Power(W/M)	LM/M	CCT/K	IP Grade
SH60LA1-DW	5000*10	12V/24V	60	15	1100	2700/6500	IP20

Dimensions



Projects



3838 RGB LED Strips (96 LEDs/m)



Features

Powered by high output 3838 RGB LED.
 Double layer rolled copper FPC.
 3M 300LSE tape attached.
 CE, RoHS,UL,TUV, BIS, CB and LM-80 certified.

Color Temperature



Application

City lighting, landscape lighting, commercial lighting and house contour lighting, etc.

Specifications

Part No.	Dimensions(mm)	Input Vol.	LED Qty/M	Power(W/M)	LM/M	CCT/K	IP Grade
SI96LC1-RGB	5000*8	24V	96	14	/	RGB	IP20

Dimensions



Projects



5050 RGB LED Strips (60 LEDs/m)



Features

Powered by high output 5050 RGB LED.
 Double layer rolled copper FPC.
 3M 300LSE tape attached.
 CE, RoHS,UL,TUV, BIS, CB and LM-80 certified.

Color Temperature



Application

City lighting, landscape lighting, commercial lighting and house contour lighting, etc.

Specifications

Part No.	Dimensions(mm)	Input Vol.	LED Qty/M	Power(W/M)	LM/M	CCT/K	IP Grade
SH60LA1-RGB	5000*10	12/24V	60	12	/	RGB	IP20

Dimensions



Projects



RGB+W LED Strips (60 LEDs/m)



Features

Powered by high output 5050 RGB LED and 5050 white LED.
 Double layer rolled copper FPC.
 3M 300LSE tape attached.
 CE, RoHS,UL,TUV, BIS, CB and LM-80 certified.

Color Temperature



Application

City lighting, landscape lighting, commercial lighting and house contour lighting, etc.

Specifications

Part No.	Dimensions(mm)	Input Vol.	LED Qty/M	Power(W/M)	LM/M	CCT/K	IP Grade
SH60LA1-RGB+W	5000*10	12/24V	60	12	/	RGB+W	IP20

Dimensions



Projects



RGBW LED Strips (60 LEDs/m)



Features

Powered by high output 5050 RGBW LED.
 Double layer rolled copper FPC.
 3M 300LSE tape attached.
 CE, RoHS,UL,TUV, BIS, CB and LM-80 certified.

Color Temperature



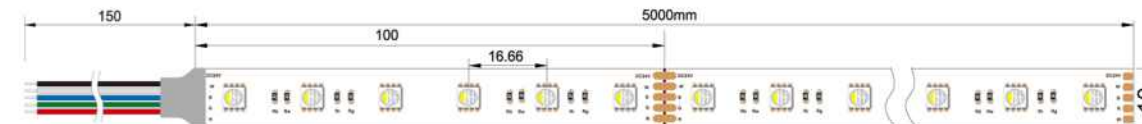
Application

City lighting, landscape lighting, commercial lighting and house contour lighting, etc.

Specifications

Part No.	Dimensions(mm)	Input Vol.	LED Qty/M	Power(W/M)	LM/M	CCT/K	IP Grade
SH60LA1-RGBW	5000*10	12/24V	60	14.4	/	RGBW	IP20

Dimensions



Projects



High Efficiency 2835 LED Strips (160LM/W)

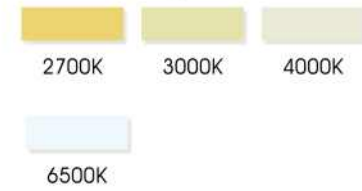


Features

Powered by high output 2835 LED, 160lm/w.
 99.99% gold thread, pure copper bracket coated with silver.
 USA Intematix phosphor with CRI>80. SDCM≤3.
 Double layer 2 ounce rolled copper FPC with good heat dissipation.
 3M 300LSE tape attached.
 CE, RoHS,UL,TUV, BIS, CB and LM-80 certified.



Color Temperature



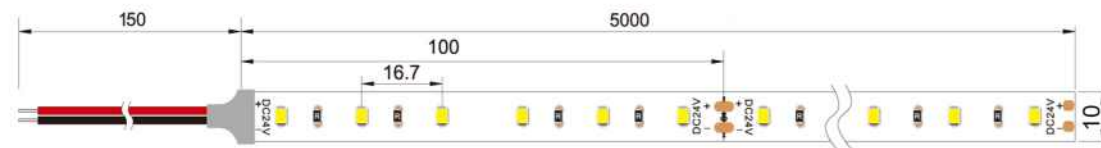
Application

City lighting, landscape lighting, commercial lighting and house contour lighting, etc.

Specifications

Part No.	Dimensions(mm)	Input Vol.	LED Qty/M	Power(W/M)	LM/M	CCT/K	IP Grade
SE64LC2	5000*10	24V	64	9.6	1600	2700-6500	IP20
SE80LC2	5000*10	24V	80	12	2000	2700-6500	IP20
SEC8LC2	5000*10	24V	128	18	3000	2700-6500	IP20

Dimensions



Projects



COB LED Strips



Features

Can be cut, and be free to cut off and weld along with the above cutting line.
 No spot, no shadow, soft light.
 The antistatic grade(MIL - STD - 883 - e): HBM level 2(2000 ~ 4000 v).
 The largest emitting angle can reach to 180°.
 CE, RoHS,UL,TUV, BIS, CB and LM-80 certified.



Color Temperature



Application

Linear lighting, residential lighting, decorative lighting, etc.

Specifications

Part No.	Dimensions(mm)	Input Vol.	LED Qty/M	Power(W/M)	LM/M	CCT/K	IP Grade
SQ480LA1	5000*8	12V	480	10	1000	2700-6500	IP20/IP65/IP68
SQ480LC1	5000*8	24V	480	10	1000	2700-6500	IP20/IP65/IP68

Dimensions



Projects



Bendable LED Strips (60 LEDs/m)

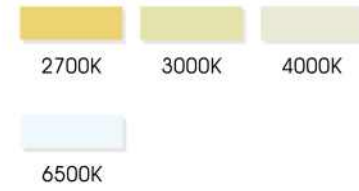


Features

Powered by high output 2835 LED.
 Double layer rolled copper FPC.
 3M 300LSE tape attached.
 CE, RoHS,UL,TUV, BIS, CB and LM-80 certified.



Color Temperature



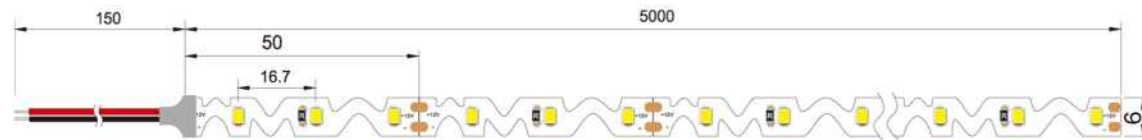
Application

Apply to 3-6cm depth signs at airports, metros, banks, buildings and shopping malls, etc.

Specifications

Part No.	Dimensions(mm)	Input Vol.	LED Qty/M	Power(W/M)	LM/M	CCT/K	IP Grade
SE60LA2-S	5000*6	12V	60	6.2	630	2700-6500	IP20
SE60PA4-S	5000*6	12V	60	6.2	630	2700-6500	IP65

Dimensions



Projects



335 LED Strips (60 LEDs/m)

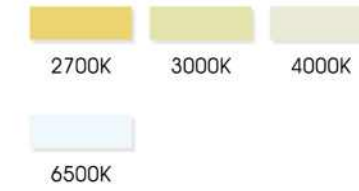


Features

Powered by high output 335 LED.
 Double layer rolled copper FPC.
 3M 300LSE tape attached.
 CE, RoHS,UL,TUV, BIS, CB and LM-80 certified.



Color Temperature



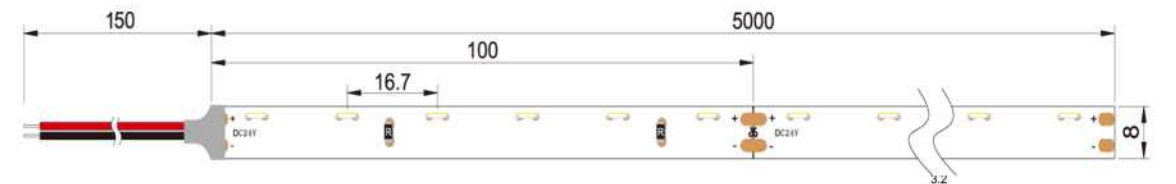
Application

Apply to ultraslim lightbox or mini illuminated letter etc.

Specifications

Part No.	Dimensions(mm)	Input Vol.	LED Qty/M	Power(W/M)	LM/M	CCT/K	IP Grade
SA60LA1	5000*8	12/24V	60	4.8	480	2700-6500	IP20

Dimensions



Projects



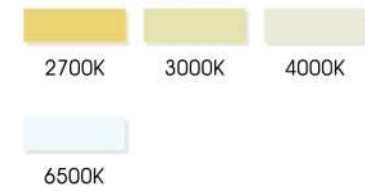
20M Per Roll LED Strips



Features

Powered by high output 2835 LED.
 DC24V, constant current design.
 20 meters per roll.
 99.99% gold thread, pure copper bracket coated with silver
 USA intermatix phosphor with CRI>80, SDCM≤3.
 Double layer rolled copper FPC.
 CE, RoHS, UL, TUV, BIS, CB and LM-80 certified.

Color Temperature



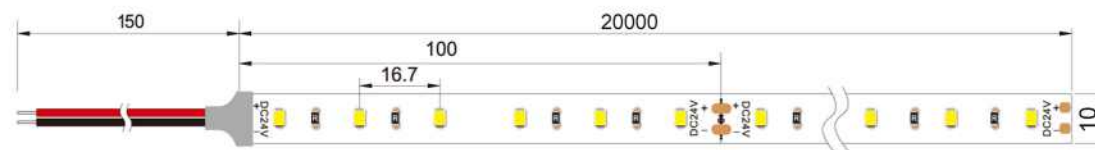
Application

City lighting, landscape lighting, commercial lighting and house contour lighting, etc.

Specifications

Part No.	Dimensions(mm)	Input Vol.	LED Qty/M	Power(W/M)	LM/M	CCT/K	IP Grade
SE60LD2	20000*10	24V	60	7.2	750	2700-6500	IP20
SE60JD2	20000*12	24V	60	7.2	750	2700-6500	IP68

Dimensions



Projects



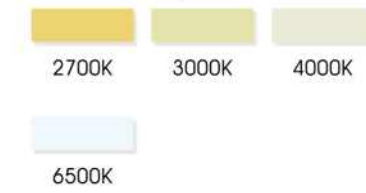
40M Per Roll LED Strips



Features

Powered by high output 2835 LED.
 DC24V, constant current design.
 40 meters per roll.
 99.99% gold thread, pure copper bracket coated with silver
 USA intermatix phosphor with CRI>80, SDCM≤3.
 Double layer rolled copper FPC.
 CE, RoHS, UL, TUV, BIS, CB and LM-80 certified.

Color Temperature



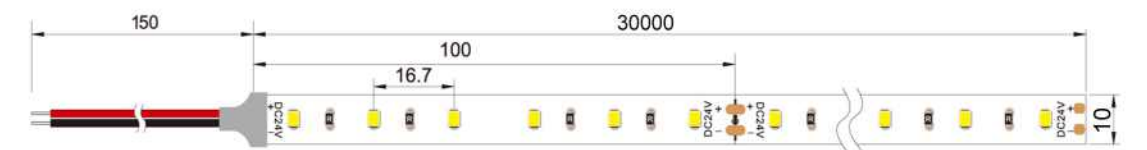
Application

City lighting, landscape lighting, commercial lighting and house contour lighting, etc.

Specifications

Part No.	Dimensions(mm)	Input Vol.	LED Qty/M	Power(W/M)	LM/M	CCT/K	IP Grade
SE60LD4	40000*10	24V	60	2.8	220	2700-6500	IP20
SE60JD4	40000*12	24V	60	2.8	220	2700-6500	IP68

Dimensions



Projects



5050 RGBCW 5 IN 1

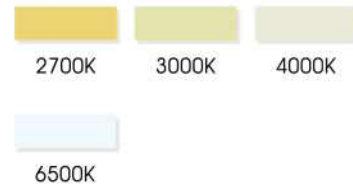


Features

- 99.99% gold thread with pure copper support, stable and reliable.
- Use RGBCW 5-in-1 super bright led, highly integrated with perfect mixed light effect.
- Compatible with corresponding controllers that are easily to find in the market.
- Every 6-led is cuttable at the scissors mark.
- Clean and neat double-sided FPC, highly flexible.
- 3M 200/300/VHB back taping optional.
- CE, RoHS,UL,TUV, BIS, CB and LM-80 certified



Color Temperature



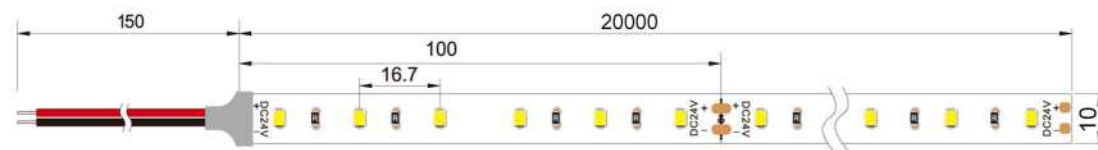
Application

Commercial lighting, decorative lighting, auxiliary lighting, and slot lighting, etc.

Specifications

Part No.	Dimensions(mm)	Input Vol.	LED Qty/M	Power(W/M)	LM/M	CCT/K	IP Grade
SH60LC1-QCWD1	5000*12	24V	60	18	882	RGB+2400K+6500K	IP20

Dimensions



Projects



LED Strip Long Run Series

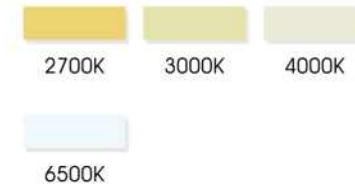


Features

- 99.99% golden wire and copper support, stable and reliable.
- Leds selected in 1 BIN system to ensure consistent color, also Ra80/90 for choice.
- DC48V constant current input, same brightness for the whole 30M strip.
- Tc point is added, working temperature can be monitored.
- Adopt Phillips NXP IC, safe and reliable.
- CE, RoHS,UL,TUV, BIS, CB and LM-80 certified



Color Temperature



Application

City lighting, landscape lighting, commercial lighting and house contour lighting, etc.

Specifications

Part No.	Dimensions(mm)	Input Vol.	LED Qty/M	Power(W/M)	LM/M	CCT/K	IP Grade
SE65LK1	30000*10	48V	65	8.8	/	2300-6500	IP20
SE130LK1	30000*12	48V	130	11	/	2300-6500	IP20

Dimensions



Projects



Flexible LED Wall Washer



Features

Adopting TPU material.
 PU glue is used for filling and sealing.
 Flexible LED wash washer, smaller and lighter.
 Various beam angles (30°, 45°, 60°, 20*45°)
 DC24V input.
 CE, RoHS,UL,TUV, BIS, CB and LM-80 certified.



Color Temperature



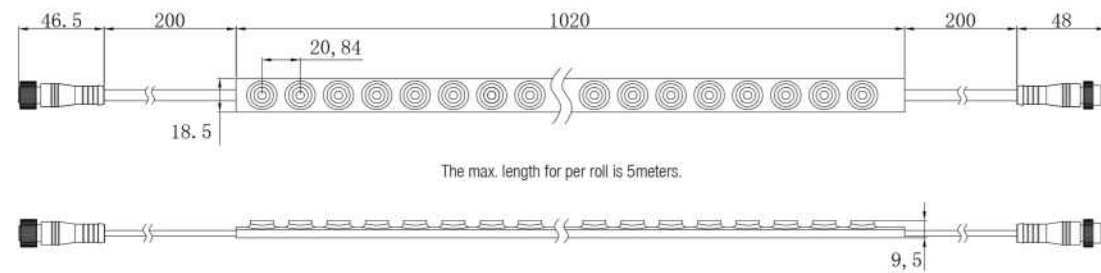
Application

Contour lighting, architectural lighting, landscape lighting, signage lighting, etc.

Specifications

Part No.	Dimensions(mm)	Input Vol.	LED Qty/M	Power(W/M)	LM/M	CCT/K	IP Grade
SE48JC1	5000*18	24V	48	18	2000	3000-6500	IP67

Dimensions



Projects



Flexible RGB/RGBW LED Wall Washer



Features

Adopting TPU material.
 PU glue is used for filling and sealing.
 Various beam angles (15°/ 30°/ 45° /15*60°)
 Compatible with various controllers and amplifiers.
 CE, RoHS,UL,TUV, BIS, CB and LM-80 certified.



Color Temperature



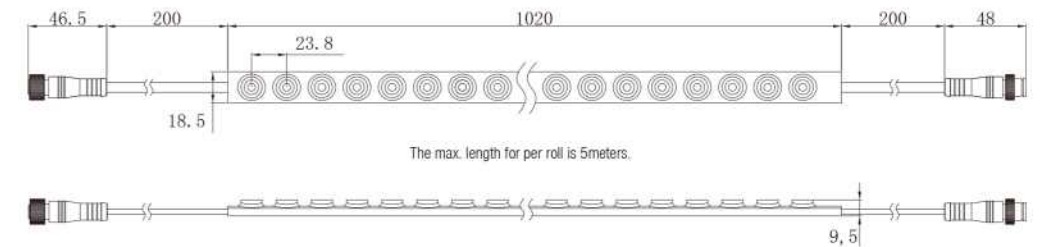
Application

Contour lighting, architectural lighting, landscape lighting, signage lighting, etc.

Specifications

Part No.	Dimensions(mm)	Input Vol.	LED Qty/M	Power(W/M)	LM/M	CCT/K	IP Grade
SE42JC1-RGB	5000*18	24V	42	9	270	RGB	IP67
SE42JC1-RGBW	5000*18	24V	42	12	600	RGBW	IP67

Dimensions



Projects



SILICONE LED NEON FLEX

Covered by pure silicone, against yellowing.
Anti corrosion and resist to acids and bases.
Applicable for temperature scope -50~200°C.
Highly flexible and easily to be shaped.
Lit with uniform illumination and no light spot.



LED Neon Flex



Features

High luminous efficiency.
Soft light, dot-free and no shadow.
Eco-friendly and UV- resistant silicon material.
CE, RoHS,UL,TUV, BIS, CB and LM-80 certified.



Color Temperature



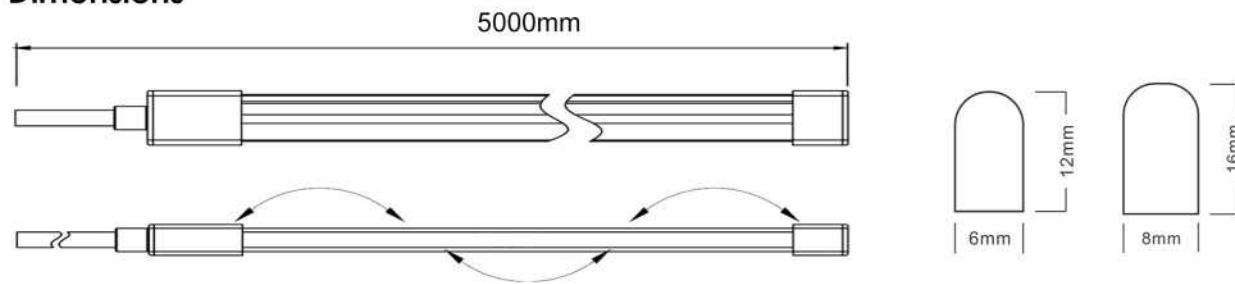
Application

Signs, decorative lighting, city lighting, commercial lighting, etc.

Specifications

Part No.	Dimensions(mm)	Input Vol.	LED Qty/M	Power(W/M)	LM/M	IP Grade
SECOJA1-D0612	5000*6*12	12V	120	10	280	IP65
SECOJA1-D0816	5000*8*16	12V	120	10	280	IP65

Dimensions



Projects



LED Neon Flex



Features

Flexible side view silicon neon strip.
Uniform light distribution and dot-free.
Dual-color silicon extrusion, with cutting mark by every 50mm.
Minimum bending diameter is 100mm.
High UV & salt spray corrosion resistance.
CE, RoHS,UL,TUV, BIS, CB and LM-80 certified.



Color Temperature



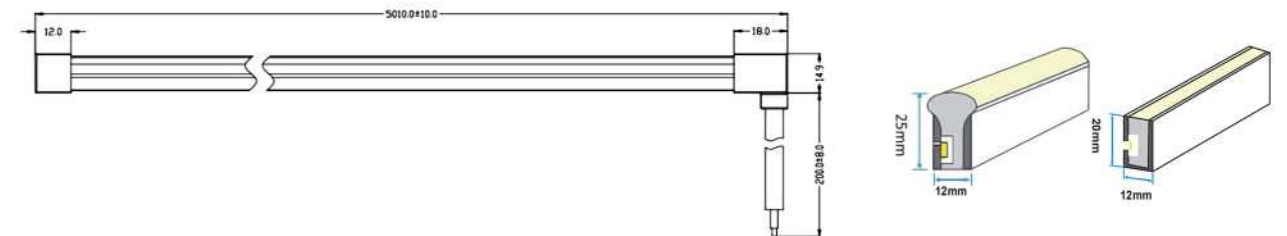
Application

Architectural lighting, contour lighting, decorative lighting, etc.

Specifications

Part No.	Dimensions(mm)	Input Vol.	LED Qty/M	Power(W/M)	LM/M	IP Grade
SECOJC1-H1220	5000*12*20	24V	120	10	320	IP67
SECOJC1-D1225	5000*12*25	24V	120	10	400	IP67

Dimensions



Projects

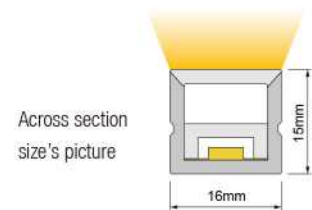
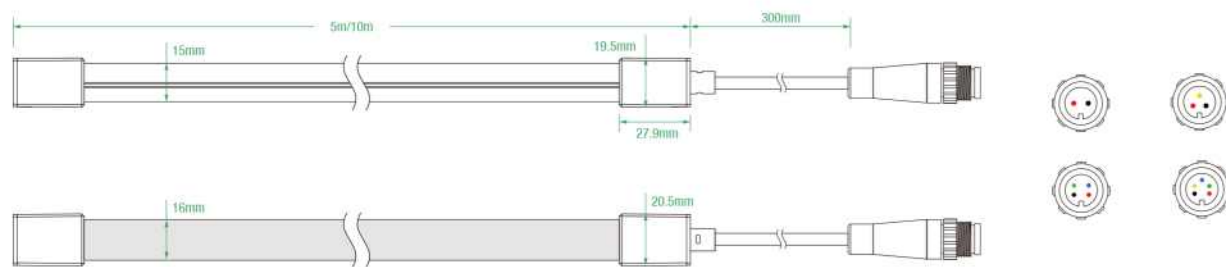


LED Neon Flex

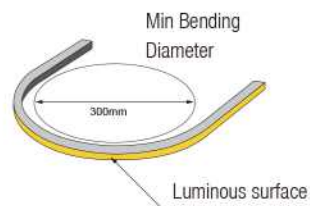


Silicone Leadline Flex Top1615 IP67, DC24V, has bending direction vertically and Front / Side / Bottom Cable Entry, with radius of 150mm (5.9") and across section size: 16mm*15mm/0.63"*0.59" (W*H). It is IP67 protection, never yellow, UV resistant, saltwater resistant and high temperature resistant via opal silicone coating. Uniform luminance and dot free will bring the most excellent performance for indoor & outdoor application. The product has constant voltage and constant current version. Constant current version can connect 28 meters in series with one power supply and don't have voltage drop, and can save the installation cost better. Unique end cap design, can install quickly and easily to meet the different length's request, No welding and dealing with waterproof.

Dimension structure



Across section size's picture



Electrical Parameter

Voltage	DC24V
LED PIN Temperature	Max. 65°C
Working Temperature	-25°C ~ 60°C
Ambient Temperature	Min. -25°C, Max (Table below)
CRI	Ra80/Ra90 Optional

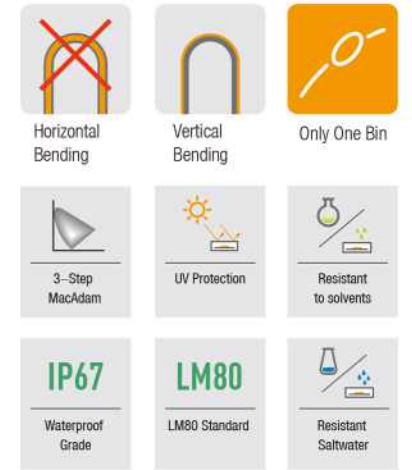
Specification

Power	5w/m	10w/m	15w/m
Efficacy	112lm/W	90lm/W	82.5lm/W
Max Ambient Temperature	45°C	Voltage	35°C

Due to the tolerance of the production and electrical components, output value and electrical power can vary up to 10%

SECOJC1-N1615

oct	5W/m		10W/m		15W/m		Unit cut
	Lm/m	Max.run length	Lm/m	Max.run length	Lm/m	Max.run length	
● 2000K	268	28M	496	18M	674	15M	50
● 2400K	276	28M	525	18M	704	15M	50
● 2700K	317	28M	581	18M	766	15M	50
● 3000K	296	28M	561	18M	748	15M	50
● 3500K	301	28M	574	18M	763	15M	50
● 4000K	384	28M	663	18M	915	15M	50
● 5000K	352	28M	682	18M	930	15M	50
● 6000K	350	28M	672	18M	932	15M	50
T.W	276	5M	555	5M	762	5M	50
WW	122	5M	237	5M	355	5M	50
CC	164	5M	330	5M	466	5M	50
● Red	139	35M	279	24M	390	18M	50
● Green	411	22M	696	15M	835	10M	50
● Blue	62	22M	113	15M	158	10M	50
● Amber	114	35M	242	24M	394	18M	50
● Pink	131	22M	255	15M	352	10M	50
● RGB	141	5M	254	5M	337	5M	50
● RGB-R	34	5M	68	5M	108	5M	50
● RGB-G	93	5M	150	5M	194	5M	50
● RGB-B	19	5M	30	5M	41	5M	50



1. TW: Tunable white, CRI80
2. Max series length refers to single side feed
3. The above color temperature is the finished-product color temperature.
4. The given data are typical values due to the tolerance of the production and electrical components, output value and electrical power can vary up to 10%
5. Please don't walk on it without protection.

Various Connections

Use three kinds of entry cable, to meet the different installing request



Front Cable Entry



Side Cable Entry



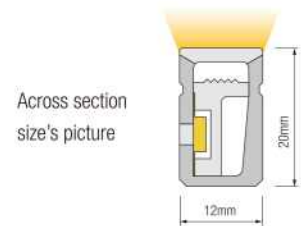
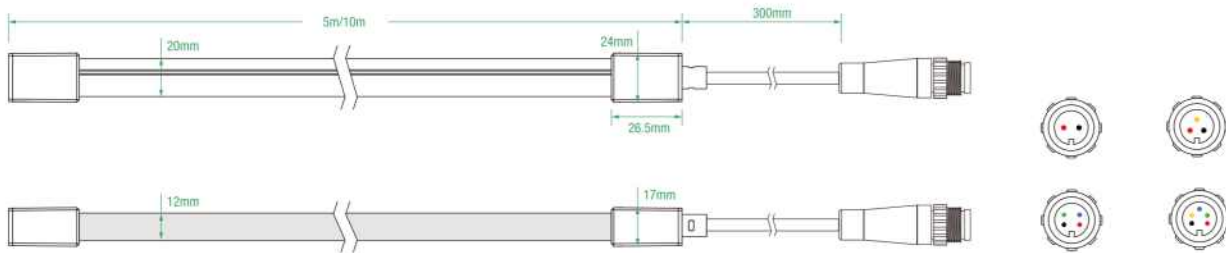
Bottom Cable Entry

LED Neon Flex

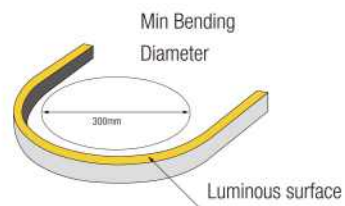


Silicone Ledline Flex Side1220 IP67, DC24V, has bending direction vertically and Front / Side / Bottom Cable Entry, with radius of 150mm (5.9") and across section size: 12mm*20mm/0.47"*0.79" (W*H). It is IP67 protection, never yellow, UV resistant, saltwater resistant and high temperature resistant via opal silicone coating. Uniform luminance and dot free will bring the most excellent performance for indoor & outdoor application. The product has constant voltage and constant current version. Constant current version can connect 28 meters in series with one power supply and don't have voltage drop, and can save the installation cost better. Unique end cap design, can install quickly and easily to meet the different length's request, No welding and dealing with waterproof.

Dimension structure



Across section size's picture



Electrical Parameter

Voltage	DC24V		
LED PIN Temperature	Max. 65°C		
Working Temperature	-25°C ~ 60°C		
Ambient Temperature	Min. -25°C, Max (Table below)		
CRI	Ra80/Ra90 Optional		

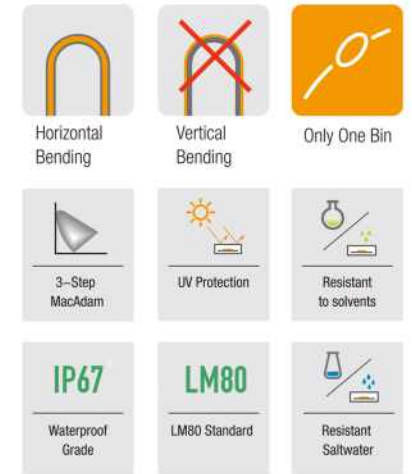
Specification

Power	5w/m	10w/m	15w/m
Efficacy	66lm/W	64lm/W	63lm/W
Max Ambient Temperature	50°C	45°C	35°C

Due to the tolerance of the production and electrical components, output value and electrical power can vary up to 10%

SECOJC1-N1220

oct	5W/m		10W/m		15W/m		Unit cut
	Lm/m	Max.run length	Lm/m	Max.run length	Lm/m	Max.run length	
● 2100K	132	28M	249	18M	335	15M	50
● 2400K	143	28M	274	18M	361	15M	50
● 2700K	150	28M	271	18M	376	15M	50
● 3000K	141	28M	269	18M	361	15M	50
● 3500K	162	28M	312	18M	431	15M	50
● 4000K	166	28M	320	18M	445	15M	50
● 5000K	168	28M	326	18M	446	15M	50
● 6000K	157	28M	308	18M	441	15M	50
T.W	134	5M	267	5M	377	5M	50
WW	61	5M	118	5M	167	5M	50
CC	80	5M	155	5M	226	5M	50
● Red	72.6	35M	128	24M	184	18M	50
● Green	207	22M	349	15M	420	10M	50
● Blue	30	22M	53	15M	74	10M	50
● Amber	57	35M	121	24M	137	18M	50
● Pink	67	22M	124	15M	170	10M	50
● RGB	72	5M	124	5M	167	5M	50
● RGB-R	18	5M	34	5M	50	5M	50
● RGB-G	46	5M	74	5M	97	5M	50
● RGB-B	9	5M	17	5M	20	5M	50



1. TW: Tunable white, CRI80
2. Max series length refers to single side feed
3. The above color temperature is the finished-product color temperature.
4. The given data are typical values due to the tolerance of the production and electrical components, output value and electrical power can vary up to 10%
5. Please don't walk on it without protection.

Various Connections

Use three kinds of entry cable, to meet the different installing request



Front Cable Entry



Side Cable Entry



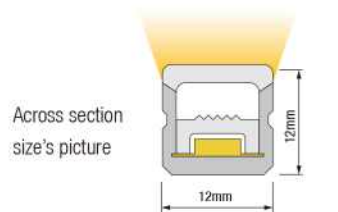
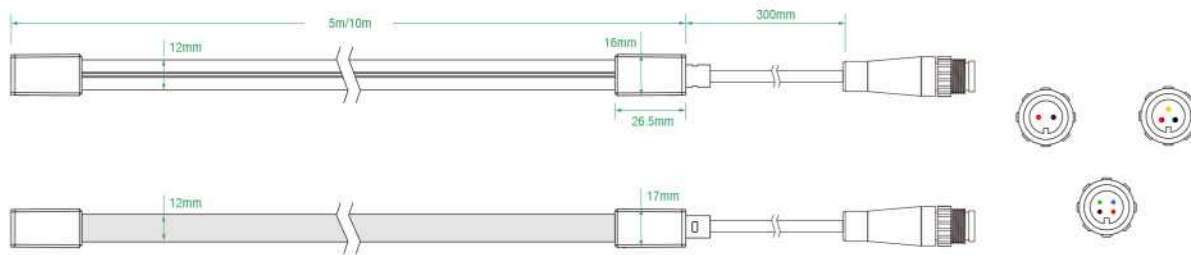
Bottom Cable Entry

LED Neon Flex



Silicone Ledline Flex Side1212 IP67, DC24V, has bending direction vertically and Front / Side / Bottom Cable Entry, with radius of 100mm (3.94") and across section size: 12mm*12mm/0.47"*0.47" (W*H). It is IP67 protection, never yellow, UV resistant, saltwater resistant and high temperature resistant via opal silicone coating. Uniform luminance and dot free will bring the most excellent performance for indoor & outdoor application. The product has constant voltage and constant current version. Constant current version can connect 28 meters in series with one power supply and don't have voltage drop, and can save the installation cost better. Unique end cap design, can install quickly and easily to meet the different length's request, No welding and dealing with waterproof.

Dimension structure



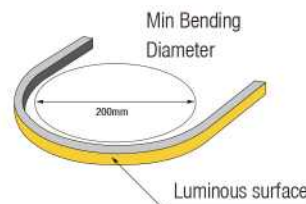
Electrical Parameter

Voltage	DC24V	
LED PIN Temperature	Max. 65°C	
Working Temperature	-25°C ~ 60°C	
Ambient Temperature	Min. -25°C, Max (Table below)	
CRI	Ra80/Ra90 Optional	

Specification

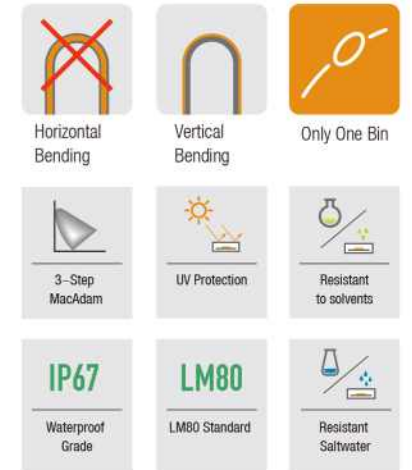
Power	5w/m	10w/m
Efficacy	88lm/W	85.7lm/W
Max Ambient Temperature	50°C	45°C

Due to the tolerance of the production and electrical components, output value and electrical power can vary up to 10%



SECOJC1-N1212

oct	5W/m		10W/m		15W/m		Unit cut
	Lm/m	Max.run length	Lm/m	Max.run length	Lm/m	Max.run length	
● 2100K	269	24M	415	16M	615	12M	50
● 2400K	275	24M	436	16M	644	12M	50
● 2700K	309	24M	484	16M	723	12M	50
● 3000K	297	24M	561	16M	603	12M	50
● 3500K	306	24M	580	16M	618	12M	50
● 4000K	357	24M	679	16M	787	12M	50
● 5000K	358	24M	685	16M	795	15M	50
● 6000K	359	24M	692	16M	787	12M	50
T.W	240	5M	476	5M	634	5M	50
WW	123	5M	194	5M	274	5M	50
CC	160	5M	320	5M	453	5M	50
● Red	138	30M	268	20M	308	16M	50
● Green	401	22M	675	15M	693	10M	50
● Blue	65	22M	116	15M	129	10M	50
● Amber	116	30M	230	20M	270	16M	50
● Pink	142	22M	264	15M	285	10M	50
●● RGB	126	5M	263	5M	283	5M	50
●● RGB-R	36	5M	72	5M	82	5M	50
●● RGB-G	99	5M	161	5M	174	5M	50
●● RGB-B	18	5M	31	5M	36	5M	50



1. TW: Tunable white, CRI80
2. Max series length refers to single side feed
3. The above color temperature is the finished-product color temperature.
4. The given data are typical values due to the tolerance of the production and electrical components, output value and electrical power can vary up to 10%
5. Please don't walk on it without protection.

Various Connections

Use three kinds of entry cable, to meet the different installing request



Front Cable Entry

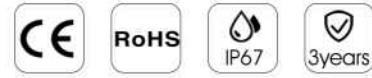


Side Cable Entry



Bottom Cable Entry

LED Power Supply



PLC-A12D-30WL

Power: 30W/pcs
 Dimensions: 272*20*20mm
 Input Vol.: 110V-260VAC
 Output Vol.: 12V/24V
 Input Frequency: 50-60Hz
 Efficiency: $\geq 85\%$
 Working Temperature: $-25^{\circ}\text{C} \sim +45^{\circ}\text{C}$



PLC-A12D-60W

Power: 60W/pcs
 Dimensions: 144*52*40mm
 Input Vol.: 110V-260VAC
 Output Vol.: 12V/24V
 Input Frequency: 50-60Hz
 Efficiency: $\geq 85\%$
 Working Temperature: $-25^{\circ}\text{C} \sim +45^{\circ}\text{C}$



PLC-A12D-100W

Power: 100W/pcs
 Dimensions: 174*52*40mm
 Input Vol.: 110V-260VAC
 Output Vol.: 12V/24V
 Input Frequency: 50-60Hz
 Efficiency: $\geq 85\%$
 Working Temperature: $-25^{\circ}\text{C} \sim +45^{\circ}\text{C}$



PLC-A12D-150W

Power: 150W/pcs
 Dimensions: 232*68*55mm
 Input Vol.: 180V-260VAC
 Output Vol.: 12V/24V
 Input Frequency: 50-60Hz
 Efficiency: $\geq 85\%$
 Working Temperature: $-25^{\circ}\text{C} \sim +45^{\circ}\text{C}$



PLC-A12D-200W

Power: 200W/pcs
 Dimensions: 253*68*55mm
 Input Vol.: 180V-260VAC
 Output Vol.: 12V/24V
 Input Frequency: 50-60Hz
 Efficiency: $\geq 85\%$
 Working Temperature: $-25^{\circ}\text{C} \sim +45^{\circ}\text{C}$



PLC-A12D-250W

Power: 250W/pcs
 Dimensions: 315*68*55mm
 Input Vol.: 180V-260VAC
 Output Vol.: 12V/24V
 Input Frequency: 50-60Hz
 Efficiency: $\geq 85\%$
 Working Temperature: $-25^{\circ}\text{C} \sim +45^{\circ}\text{C}$



PLC-A12D-320W

Power: 320W/pcs
 Dimensions: 251*90*45mm
 Input Vol.: 180V-260VAC
 Output Vol.: 12V/24V
 Input Frequency: 50-60Hz
 Efficiency: $\geq 85\%$
 Working Temperature: $-25^{\circ}\text{C} \sim +45^{\circ}\text{C}$



PLC-A12D-400W

Power: 400W/pcs
 Dimensions: 285*110*67mm
 Input Vol.: 180V-260VAC
 Output Vol.: 12V/24V
 Input Frequency: 50-60Hz
 Efficiency: $\geq 85\%$
 Working Temperature: $-25^{\circ}\text{C} \sim +45^{\circ}\text{C}$



Thin Power Supply



LMWV-30-12

Power: 30W/pcs
 Dimensions: 239*35*19.8mm
 Input Vol.: 200V-240VAC
 Output Vol.: 12V/24V
 Input Frequency: 50-60Hz
 Efficiency: $\geq 85\%$
 PF > 0.95
 Working Temperature: $-25^{\circ}\text{C} \sim +50^{\circ}\text{C}$



LMWV-60-12

Power: 60W/pcs
 Dimensions: 295*35*19.8mm
 Input Vol.: 200V-240VAC
 Output Vol.: 12V/24V
 Input Frequency: 50-60Hz
 Efficiency: $\geq 85\%$
 PF > 0.95
 Working Temperature: $-25^{\circ}\text{C} \sim +50^{\circ}\text{C}$



LMWV-100-12

Power: 100W/pcs
 Dimensions: 309*35*19.8mm
 Input Vol.: 200V-240VAC
 Output Vol.: 12V/24V
 Input Frequency: 50-60Hz
 Efficiency: $\geq 85\%$
 PF > 0.95
 Working Temperature: $-25^{\circ}\text{C} \sim +50^{\circ}\text{C}$



LMWV-150-12

Power: 150W/pcs
 Dimensions: 309*35*22.8mm
 Input Vol.: 200V-240VAC
 Output Vol.: 12V/24V
 Input Frequency: 50-60Hz
 Efficiency: $\geq 85\%$
 PF > 0.95
 Working Temperature: $-25^{\circ}\text{C} \sim +50^{\circ}\text{C}$



CLA-12DC-100W

Power: 100W/pcs
 Dimensions: 220*53*18mm
 Input Vol.: 180V-260VAC
 Output Vol.: 12V/24V
 Input Frequency: 50-60Hz
 Efficiency: $\geq 85\%$
 Working Temperature: $-25^{\circ}\text{C} \sim +45^{\circ}\text{C}$



CLA-12DC-150W

Power: 150W/pcs
 Dimensions: 320*53*18mm
 Input Vol.: 180V-260VAC
 Output Vol.: 12V/24V
 Input Frequency: 50-60Hz
 Efficiency: $\geq 85\%$
 Working Temperature: $-25^{\circ}\text{C} \sim +45^{\circ}\text{C}$



CLA-12DC-200W

Power: 200W/pcs
 Dimensions: 320*53*18mm
 Input Vol.: 180V-260VAC
 Output Vol.: 12V/24V
 Input Frequency: 50-60Hz
 Efficiency: $\geq 85\%$
 Working Temperature: $-25^{\circ}\text{C} \sim +45^{\circ}\text{C}$



CLA-12DC-300W

Power: 300W/pcs
 Dimensions: 320*53*22mm
 Input Vol.: 180V-260VAC
 Output Vol.: 12V/24V
 Input Frequency: 50-60Hz
 Efficiency: $\geq 85\%$
 Working Temperature: $-25^{\circ}\text{C} \sim +45^{\circ}\text{C}$



LED Controller

LBY-CG03-RGB

Working temperature: -20-60°C
Input voltage: DC12~24V
Output: 3 circuit
Connection mode: Common anode
Controller size: L85×W45×H22mm
Gross weight: 220g
Static power consumption: < 1W
Output current: < 6A/ch
Output power: 12V:<216W, 24V:<432W



LBY-SG05-WW/CW

Working temperature: -20~55°C
Input voltage: DC12V~24V
Output: 2 circuit
Connection mode: Common anode
Controller size: L85×W45×H23mm
Net weight: 86g
Static power consumption: < 1W
Output current: < 6A/ch
Output power: 12V:<144W, 24V:<288W



LBY-CG04-RGB

Working temperature: -20-60°C
Input voltage: DC5V~24V
Output: 3 circuit
Connection mode: Common anode
Controller size: L74×W110×H24mm
Net weight: 195g
Static power consumption: < 1W
Output current: < 10A/ch
Output power: 5V:<150W, 12V:<360W, 24V:<720W



LBY-TG04

Working temperature: -20-60°C
Input voltage: DC12V~24V
Output: 2 circuit
Connection mode: Common anode
Controller size: L85×W45×H23mm
Net weight: 50g
Static power consumption: < 1W
Output current: < 6A/ch
Output power: 12V:<144W, 24V:<288W



LBY-FN07

Working temperature: -20-60°C
Input voltage: DC12V~24V
Output: 3 circuit
Connection mode: Common anode
Controller size: L110×W90×H25mm
Net weight: 175g,
Static power consumption: < 1W
Output current: < 10A/ch
Output power: 12V:<360W, 24V:<720W



LBY-WG02-RGBW

Working temperature: -20-60°C
Input voltage: DC12V~24V
Output: 4 circuit
Connection mode: Common anode
Controller size: L100×W45×H23mm
Net weight: 85g Gross weight:120g
Static power consumption: < 1W
Output current: < 6A/ch
Output power: 12V:<288W, 24V:<576W

