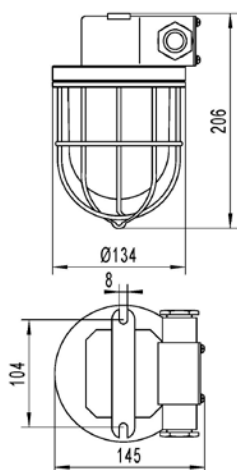
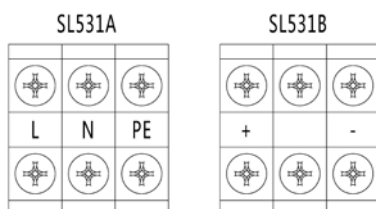




Mounting Dimension (Unit : mm)



Wiring Diagram



Application



Application

Applied to the illumination for wet places in deck, sidewalk in ships or cabin.

Functions and Features

The structure of light is simple, has good waterproof function, can be used in kinds of places and bad environment.

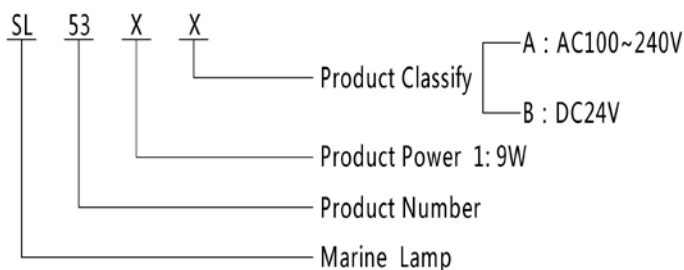
Standard

- GB7000.1-2002 《General safety requirement and test for the lamps》
- GB7000.10-1999 《Safety requirement for fixed general lamps》
- GB/T 6994-2006 《Electrical device definitions of the ship and general provision》
- GD01-2006 《Electrical and electronics produce type approval test guide》
- GB19510.1、GB19510.14 (Steel ship classification rules)
- CB1246-94 《Lighting lamps and lanterns of general specification of the ship》

Specification

Operating Voltage	AC100~240V/ DC24V	Rated Power	9W
Temperature Color	5500K-6000K	CRI	Ra>72
LED Luminous efficiency	100lm/W	LED Life Span	≥50,000hr
Operating Temperature	-40°C ~ +60°C	Storage Temperature	-40°C ~ +70°C
IP Grade	IP56	Weight	2.7KG
Material	Housing : Tempered Glass Shell : Brass		

Model Table :



Installation

- Make sure supply voltage conform to the lamps rated voltage;
- Use 2*M6 Screws to fix the mounting surface, which should be smooth and with enough mechanical strength.
- Equipped with terminals inside the lamp, connect power input and output line separately.
- Input line as shown in the wiring diagram.

Notice

- It is normal which temperature rise slightly when the product working .
- Do not open any part to avoid any dangers when it works.
- It is sealing structure, do not disassemble the lamp by non-professional people. Otherwise, the warranty is invalid.