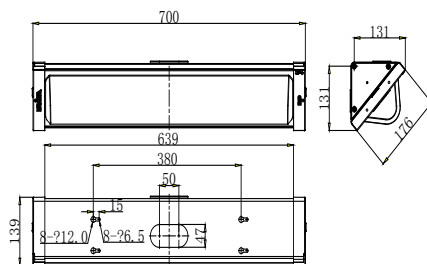


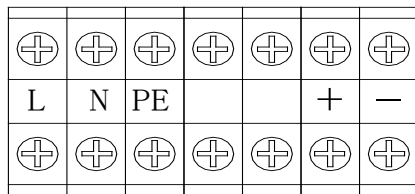


Mounting dimension (unit: mm)

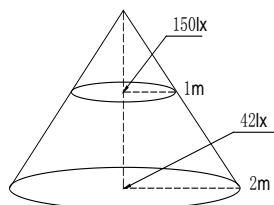


Wiring diagram

Emergency



Luminance curve



Application



Application

Mainly used as lighting in different kinds of ship's corridors, laundry rooms, crew lounges and other places in ships.

Main functions and features

1. Ship-wall mounted LED corner light, esthetic and compact in appearance, aluminum enclosure, extended PC housing
2. Professional optical design with no flashing and glare, quality brand LED chips, high luminous efficiency, light transmission rate of up to 95%
3. Customers can choose from two different models of ship wall-mounted LED corner lamps
4. Emergency function: when the main power is off, it can be directly powered by DC24V external emergency power supply

Reference standards

It complies to IEC60092-306, GB7000.1, GB7000.10, GB17743, GB19510.1, GB19510.14, <Rules for Classification of Sea-going Steel Ships> and military standard GJB84000-2000 for ship power system and CB1246-94 generic specification 3. Group(General specification for marine lighting fixtures)

Specification

| | | | |
|-----------------------|---|-----------------------|-----------------------------|
| Operating voltage | AC200V-AC240V/DC24V | Frequency | 50~60Hz |
| Power consumption | <15W | Flammability level | UL94-V0 |
| Color temperature | 5500K-6000K | Color rendering index | Ra>65 |
| LED life time | ≥50,000 hours | Beam angle | 170° |
| Lumen decay | Less than 30% in 50,000 hours operation | Luminous efficacy | >80lm/W |
| Operating temperature | -30°C ~ +60°C | Humidity | 10% - 95% (no condensation) |
| IP rating | IP22 | Store temperature | -40°C ~ +70°C |
| Material | Housing: PC Body: Aluminum alloy | Weight | 3.6kg |

Installation

- Please ensure the power voltage is same as the lamp voltage
- Fix lights with 4-M6 screws, the mounting surface should have enough mechanical strength and smoothness.
- Wiring terminals inside the light
- Please refer the wiring diagram for wiring.

Note:

- The part of material of products is PC(like lamp cover and lamp shell), so it cannot direct or indirect touch the organic solvent, such as industrial alcohol, banana oil, isopropyl alcohol, carbon tetrachloride, cyclohexanone and so on, otherwise, the product will be corrosion.
- It is normal that the lamp has temperature rise
- Do not open any part to avoid any danger when it works.
- As its sealed structure, do not disassemble the lamp without the company of professional people. Otherwise, the warranty is invalid.