



CD SERIES CONTROL DESK



What is CD Series?

Control Desk Series (also called CD Series) is ergonomically designed for station operators. This series is suitable for controlling machinery system, electronics, and communication devices. Protection category is IP40. There are 12 standard designs available.

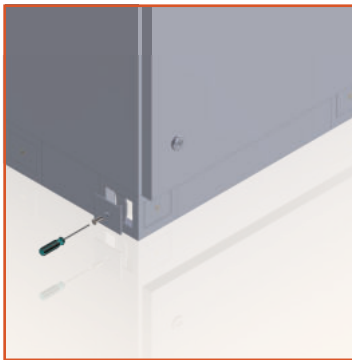
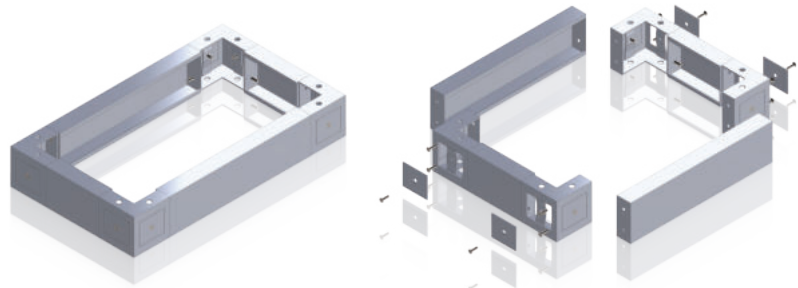
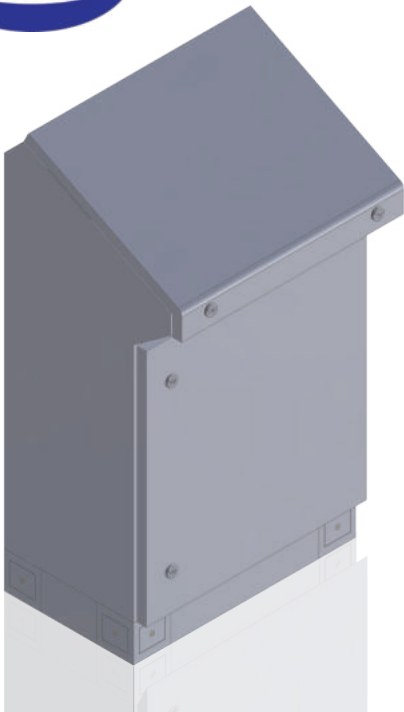
ตู้ควบคุมไฟฟ้า

ออกแบบสำหรับใช้กับแผงควบคุมเครื่องจักร อุปกรณ์ไฟฟ้า และอุปกรณ์ที่ใช้ในการสื่อสาร สามารถกันฝุ่นและละอองน้ำได้ในระดับ IP40 มีขนาดมาตรฐานทั้งหมด 12 รูปแบบด้วยกัน



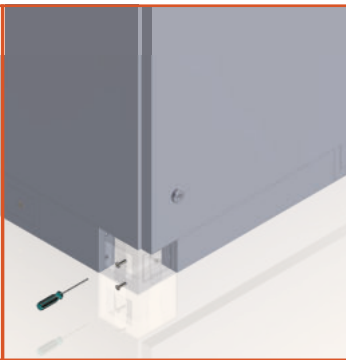
CD SERIES

BASE/PLINTH SYSTEM



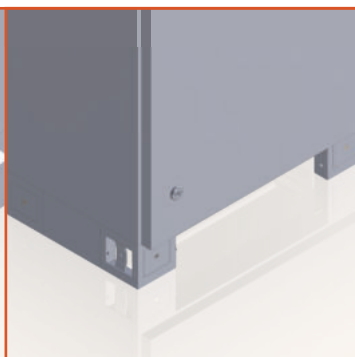
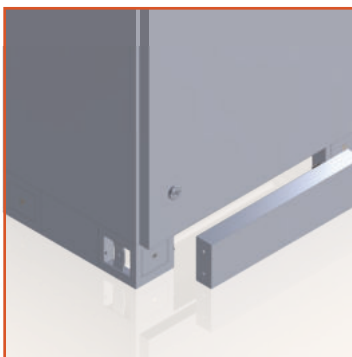
1. ใช้ไขควงไขสกรู เพื่อถอดแผ่นปิดสี่เหลี่ยมมุมฐาน ด้านซ้ายและด้านขวาออก

Using a screwdriver to remove the base corner cover plates on both left and right side.



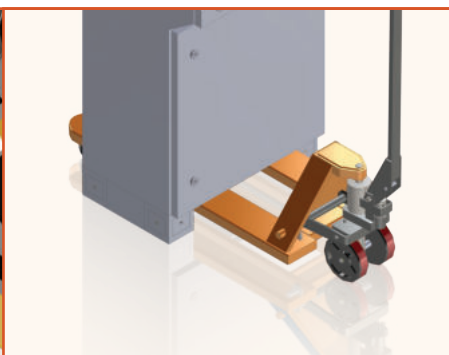
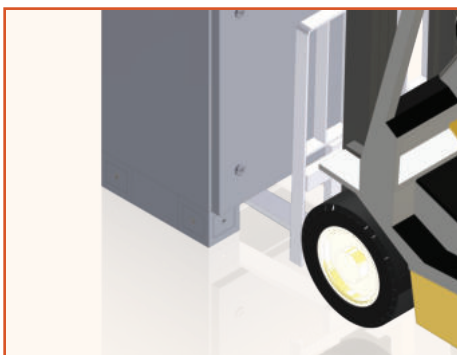
2. ไขสกรูด้านในมุมฐาน ทั้งด้านหน้าและด้านหลังออก

Unscrew the screws inside the base cover on both front and rear side.



3. ถอดคานด้านกว้างของฐานออก ทั้งด้านหน้าและด้านหลังเพื่อให้มีช่องว่างตรงกลาง เพื่อใช้สำหรับเข้าสายไฟหรือเชื่อมต่ออุปกรณ์ต่างๆ

Take off the beams on both front and rear side for maneuvering purpose, cable entry, wiring or connecting to other equipment.



4. ในส่วนของการขนย้ายสามารถใช้รถ forklift หรือ hand lift เสียบตรงกลาง ทำให้สะดวกในการเคลื่อนย้ายตู้

The control desk can be maneuvered conveniently by inserting a forklift or a hand lift under the control desk.



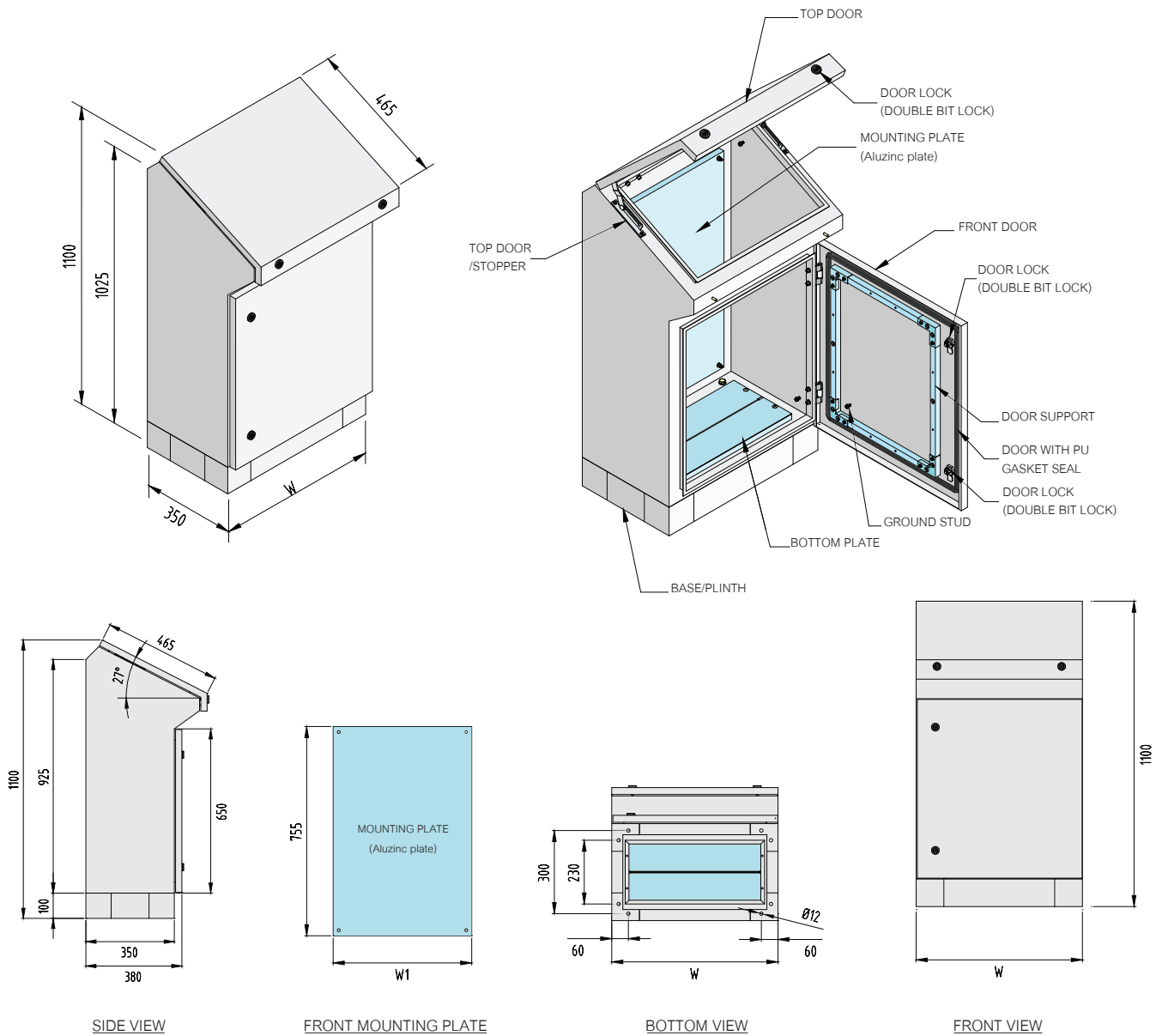
Specification

Material	Electro-Galvanized Steel (EG)		Aluminium-Zinc Coated Steel (Aluzinc)	
Thickness (mm.)	Enclosure Frame	Door	Mounting Plate	Bottom Plate
	1.5	1.5	2.0	1.5
Finished Surface	Polyester powder coated with UV Protection paint RAL-7035		Aluminium-Zinc Coated Steel (Aluzinc)	
Protection Rating	IP40			
Supply includes	-Enclosure frame with door -Mounting plate -Bottom plate -Door and cover with PU gasket seal -Double bit lock with key			



CDA SERIES

FRONT ACCESS, SINGLE DOOR



Price List



รุ่น Model	ขนาดตู้ Enclosure Dimension (mm.)			เพลทยึดอุปกรณ์ Mounting Plate (Aluzinc Plate)		น้ำหนักตู้ Approx. Weight (Kg.)	ราคาต่อหน่วย Unit Price (Baht)
	Width (W)	Height (H)	Depth (D)	Dimension (mm.) W1 H1			
CDA-600	600	1100	350	500	755	63	14,000.00
CDA-800	800	1100	350	700	755	77.5	16,000.00



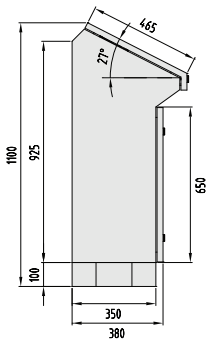
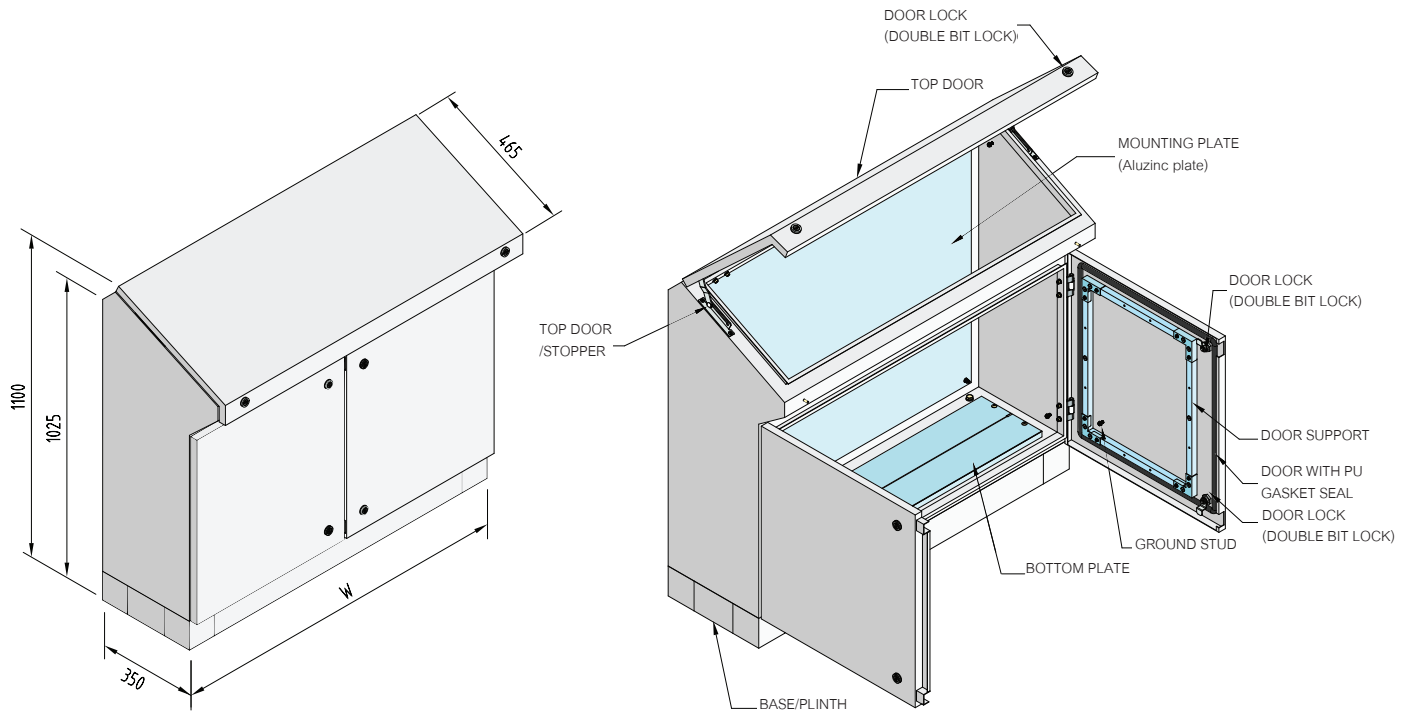
Specification

Material	Electro-Galvanized Steel (EG)		Aluminium-Zinc Coated Steel (Aluzinc)	
Thickness (mm.)	Enclosure Frame	Door	Mounting Plate	Bottom Plate
	1.5	1.5	2.0	1.5
Finished Surface	Polyester powder coated with UV Protection paint RAL-7035		Aluminium-Zinc Coated Steel (Aluzinc)	
Protection Rating	IP40			
Supply includes	-Enclosure frame with door -Mounting plate -Bottom plate -Door and cover with PU gasket seal -Double bit lock with key			

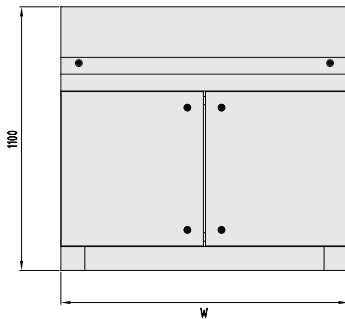


CDA SERIES

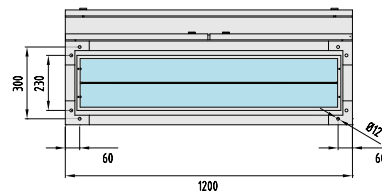
FRONT ACCESS, DOUBLE DOOR



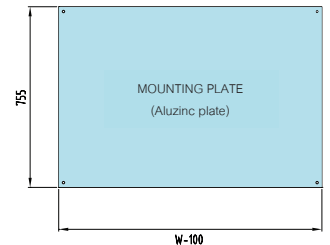
SIDE VIEW



FRONT VIEW



BOTTOM VIEW



FRONT MOUNTING PLATE

Price List



รุ่น Model	ขนาดตู้ Enclosure Dimension (mm.)			เพลทยึดอุปกรณ์ Mounting Plate (Aluzinc Plate)		น้ำหนักตู้ Approx. Weight (Kg.)	ราคาต่อหน่วย Unit Price (Baht)
	Width (W)	Height (H)	Depth (D)	Dimension (mm.) W1 H1			
CDA-1000	1000	1100	350	900	755	90	19,000.00
CDA-1200	1200	1100	350	1100	755	100	21,000.00



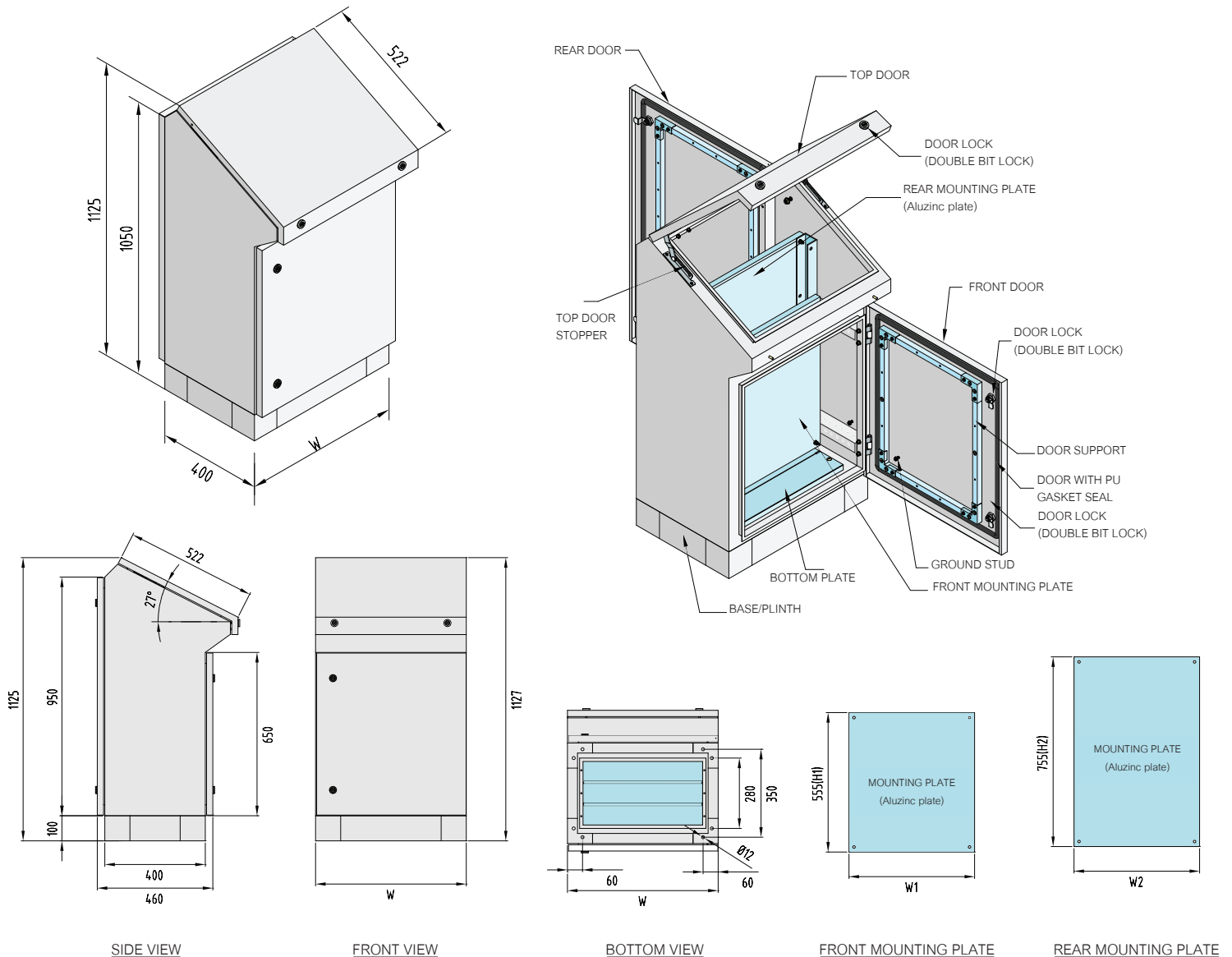
Specification

Material	Electro-Galvanized Steel (EG)		Aluminium-Zinc Coated Steel (Aluzinc)	
Thickness (mm.)	Enclosure Frame	Door	Mounting Plate	Bottom Plate
	1.5	1.5	2.0	1.5
Finished Surface	Polyester powder coated with UV Protection paint RAL-7035		Aluminium-Zinc Coated Steel (Aluzinc)	
Protection Rating	IP40			
Supply includes	-Enclosure frame with door -Mounting plate -Bottom plate -Door and cover with PU gasket seal -Double bit lock with key			



CDB SERIES

FRONT & REAR ACCESS, SINGLE DOOR



Price List



รุ่น Model	ขนาดตู้ Enclosure Dimension (mm.)			เพลทยึดอุปกรณ์ Mounting Plate (Aluzinc Plate)				น้ำหนักตู้ Approx. Weight (Kg.)	ราคาต่อหน่วย Unit Price (Baht)
	Width (W)	Height (H)	Depth (D)	Front Side Dimension (mm.)		Rear Side Dimension (mm.)			
				W1	H1	W2	H2		
CDB-600	600	1125	400	500	555	500	755	79	17,000.00
CDB-800	800	1125	400	700	555	700	755	94	20,000.00

**FRONT & REAR ACCESS, DOUBLE DOOR**

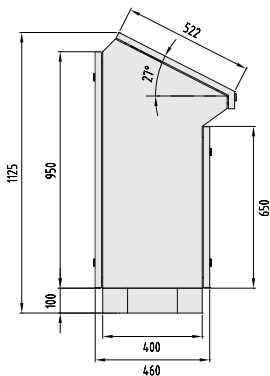
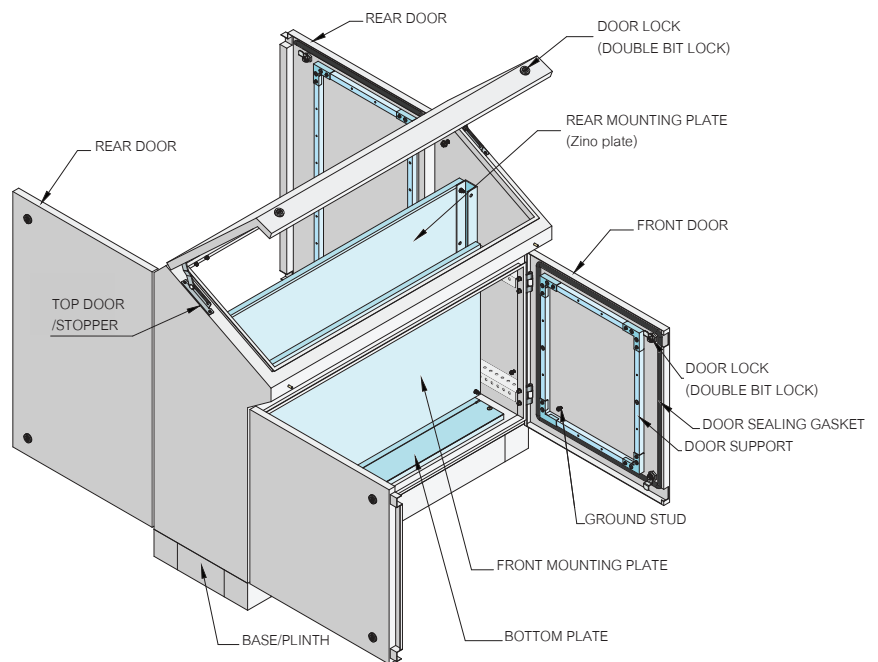
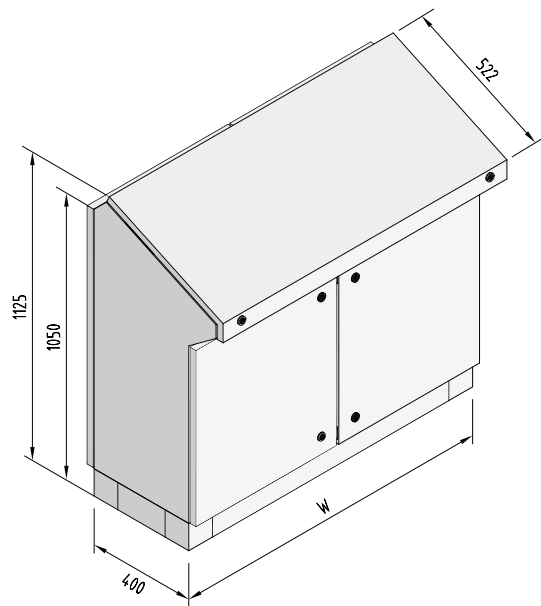
Specification

Material	Electro-Galvanized Steel (EG)		Aluminium-Zinc Coated Steel (Aluzinc)	
Thickness (mm.)	Enclosure Frame	Door	Mounting Plate	Bottom Plate
	1.5	1.5	2.0	1.5
Finished Surface	Polyester powder coated with UV Protection paint RAL-7035		Aluminium-Zinc Coated Steel (Aluzinc)	
Protection Rating	IP40			
Supply includes	-Enclosure frame with door -Mounting plate -Bottom plate -Door and cover with PU gasket seal -Double bit lock with key			

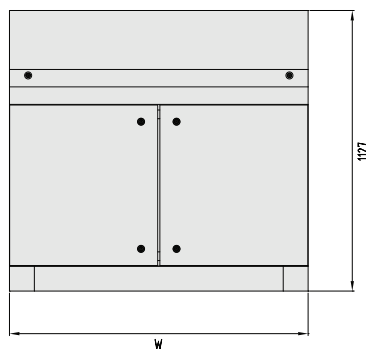


CDB SERIES

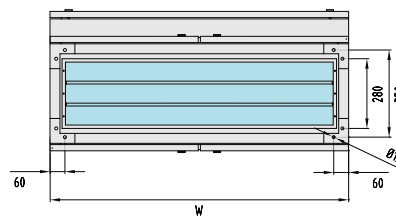
FRONT & REAR ACCESS, DOUBLE DOOR



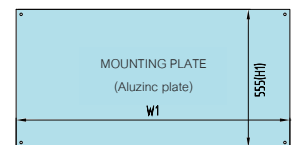
SIDE VIEW



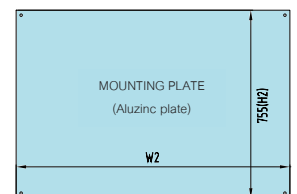
FRONT VIEW



BOTTOM VIEW



FRONT MOUNTING PLATE



REAR MOUNTING PLATE

Price List

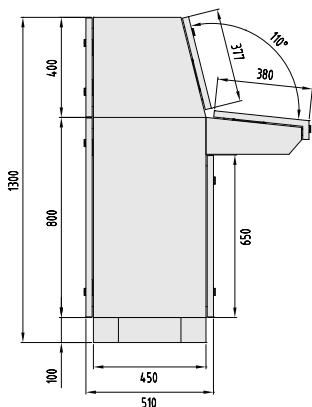
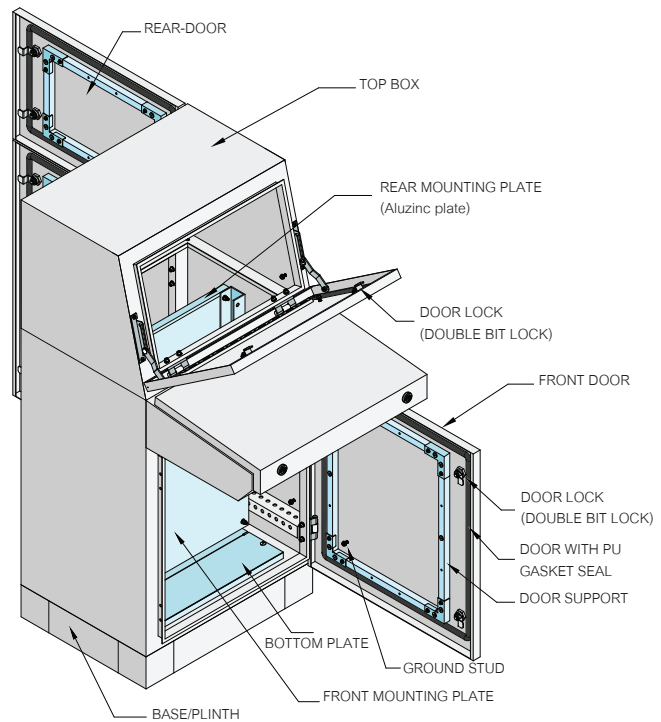
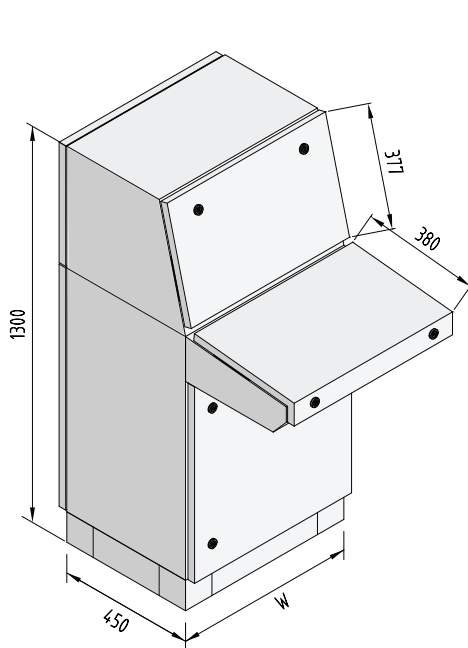


รุ่น Model	ขนาดตู้ Enclosure Dimension (mm.)			เพลทยึดอุปกรณ์ Mounting Plate (Aluzinc Plate)				น้ำหนักตู้ Approx. Weight (Kg.)	ราคาต่อหน่วย Unit Price (Baht)
	Width (W)	Height (H)	Depth (D)	Front Side Dimension (mm.)		Rear Side Dimension (mm.)			
				W1	H1	W2	H2		
CDB-1000	1000	1125	400	900	555	900	755	119	23,000.00
CDB-1200	1200	1125	400	1100	555	1100	755	132	25,000.00

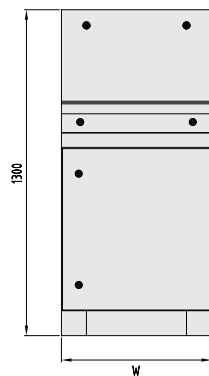


Specification

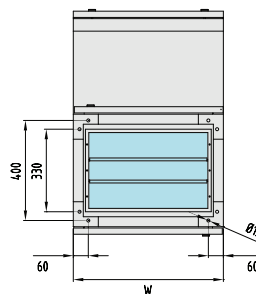
Material	Electro-Galvanized Steel (EG)		Aluminium-Zinc Coated Steel (Aluzinc)	
Thickness (mm.)	Enclosure Frame	Door	Mounting Plate	Bottom Plate
	1.5	1.5	2.0	1.5
Finished Surface	Polyester powder coated with UV Protection paint RAL-7035		Aluminium-Zinc Coated Steel (Aluzinc)	
Protection Rating	IP40			
Supply includes	-Enclosure frame with door -Mounting plate -Bottom plate -Door and cover with PU gasket seal -Double bit lock with key			



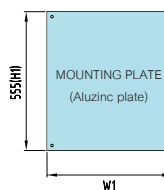
SIDE VIEW



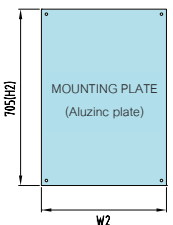
FRONT VIEW



BOTTOM VIEW



FRONT MOUNTING PLATE



REAR MOUNTING PLATE

Price List

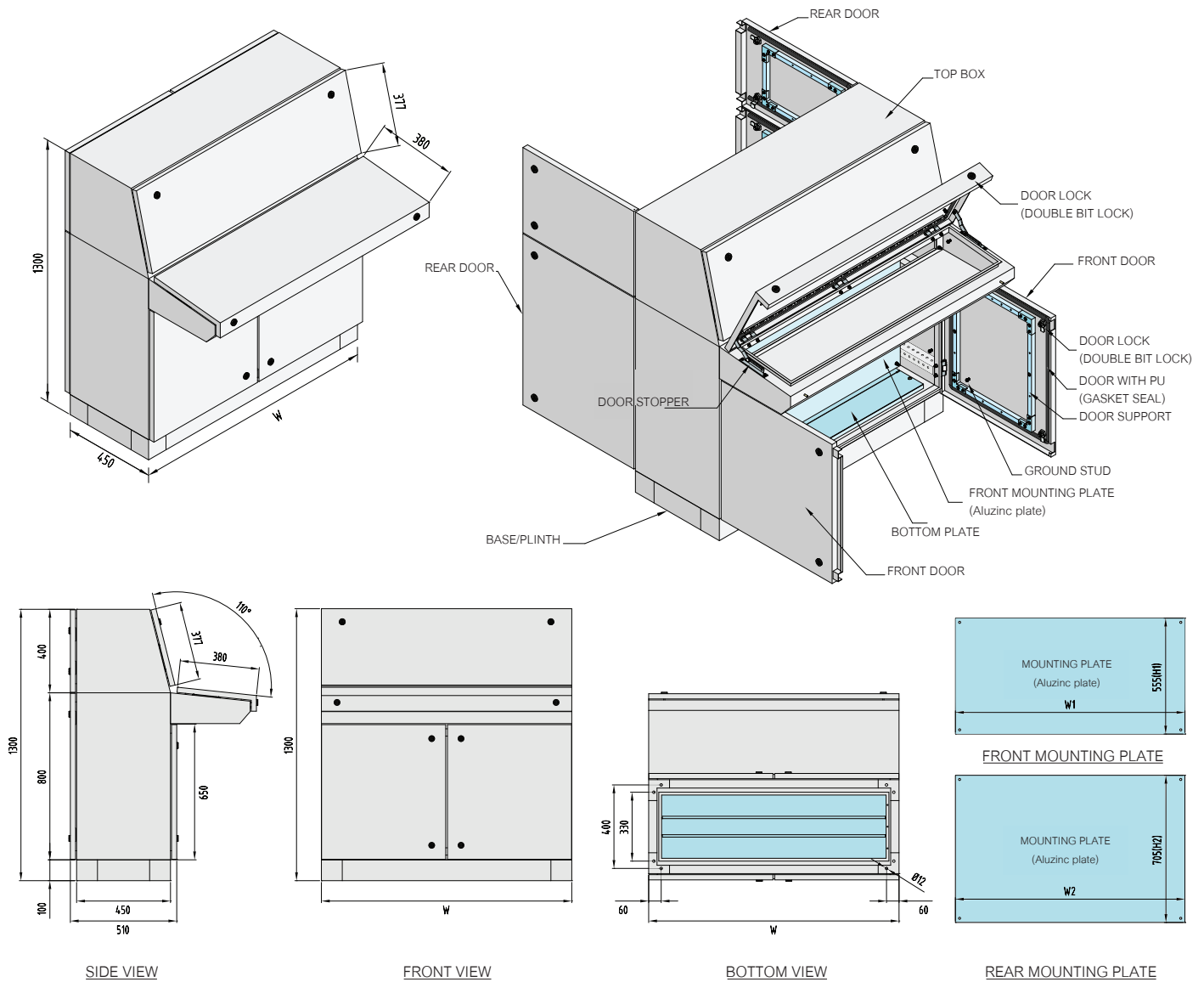


รุ่น Model	ขนาดตู้ Enclosure Dimension (mm.)			เพลทยึดอุปกรณ์ Mounting Plate (Aluzinc Plate)				น้ำหนักตู้ Approx. Weight (Kg.)	ราคาต่อหน่วย Unit Price (Baht)
	Width (W)	Height (H)	Depth (D)	Front Side Dimension (mm.)		Rear Side Dimension (mm.)			
				W1	H1	W2	H2		
CDC-600	600	1300	450	500	555	500	705	111	45,000.00
CDC-800	800	1300	450	700	555	700	705	120	48,000.00



Specification

Material	Electro-Galvanized Steel (EG)		Aluminium-Zinc Coated Steel (Aluzinc)	
Thickness (mm.)	Enclosure Frame	Door	Mounting Plate	Bottom Plate
	1.5	1.5	2.0	1.5
Finished Surface	Polyester powder coated with UV Protection paint RAL-7035		Aluminium-Zinc Coated Steel (Aluzinc)	
Protection Rating	IP40			
Supply includes	-Enclosure frame with door -Mounting plate -Bottom plate -Door and cover with PU gasket seal -Double bit lock with key			



Price List



รุ่น Model	ขนาดตู้ Enclosure Dimension (mm.)			เพลทยึดอุปกรณ์ Mounting Plate (Aluzinc Plate)				น้ำหนักตู้ Approx. Weight (Kg.)	ราคาต่อหน่วย Unit Price (Baht)
	Width (W)	Height (H)	Depth (D)	Front Side Dimension (mm.)		Rear Side Dimension (mm.)			
				W1	H1	W2	H2		
CDC-1000	1000	1300	450	900	555	900	705	139	55,000.00
CDC-1200	1200	1300	450	1100	555	1100	705	159	65,000.00



Specification

Material	Stainless Steel No. 304 or 316		Stainless Steel No. 304 or 316	
Thickness (mm.)	Enclosure Frame	Door	Mounting Plate	Bottom Plate
	1.5	1.5	2.0	1.5
Finished Surface	Brushed		Stainless Steel No. 304 or 316	
Protection Rating	IP40			
Supply includes	-Enclosure frame with door -Mounting plate -Bottom plate -Door and cover with PU gasket seal -Double bit lock with key			