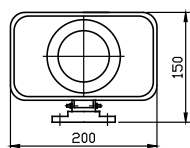
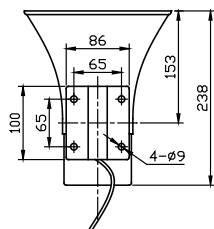
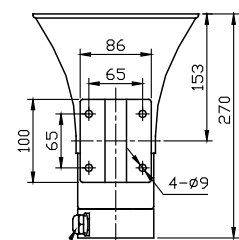




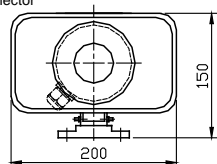
Mounting dimension ( mm )



BC-3A



PG13.5  
Waterproof  
Connector



BC-3A with junction box

#### Application



#### Application

Apply to construction machinery(travelling cranes, crawler crane, gantry cranes etc.), harbor machinery(overhead cranes, bridge cranes, )etc hoist device.

#### Major function&features

- Multiple tones are available.
- Loud and clear alarm sound
- Easy of operation, and have a long lifetime
- Stability

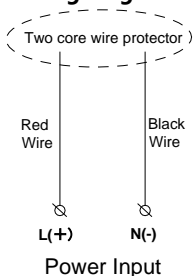
#### Major specification

Supply voltage	AC220V/DC24V (other voltage can be customized)	Power frequency	50Hz~60Hz
Tone	A/B/E/D/Speech ( special tone or speech can be customized )	Loudspeaker Power	10W
Loudspeaker resistance	8Ω/16Ω	Sound level	106dB
Operating temperature	-30°C ~ +70°C	IP protection	IP65
Humidity	10% ~ 95% (no condensing )	Material	Engineering plastics
Weight	1.6kg		

#### Installation and operation

- Check the power supply voltage whether is the same with the siren.
- Use M8 screws to fasten to the mounting surface, the mounting surface should level-off and have enough mechanical strength.
- The speaker head must be downside in order to avoid any water accumulation.
- Connect the cable, and make sure the same power with the devise.
- Power on and operation.

#### Wiring diagram



#### Notice

- The part of material of products is PC( like lamp cover and lamp shell ), so it cannot direct or indirect touch the organic solvent, such as industrial alcohol, banana oil, isopropyl alcohol, carbon tetrachloride, cyclohexanone and so on, otherwise, the product will be corrosion.
- Please read the instruction manual carefully before operation.
- Ensure that the power connection part is correct.
- If there are any questions when, please contact us.