

# Enterprise Introduction

Jiangsu SNXIN Wanhe Environment Technology CO.,LTD is a technological company specializing in researching, production and selling ultraviolet germicidal products and other spare parts. Our main products are long lifetime amalgam lamp, uv lamp for air disinfection、 water treatment and waste gas treatment, Electrodeless lamp, cross-flowrate UV sterilizer,ballast and quartz tube etc.

Located at Jiangyin new harbour city, Our company has equipped advanced apparatus for production and checking and modern scale production resource, with high accuracy ability to product kinds of products, has developed to be one of the largest production bases of ultraviolet disinfection in China.

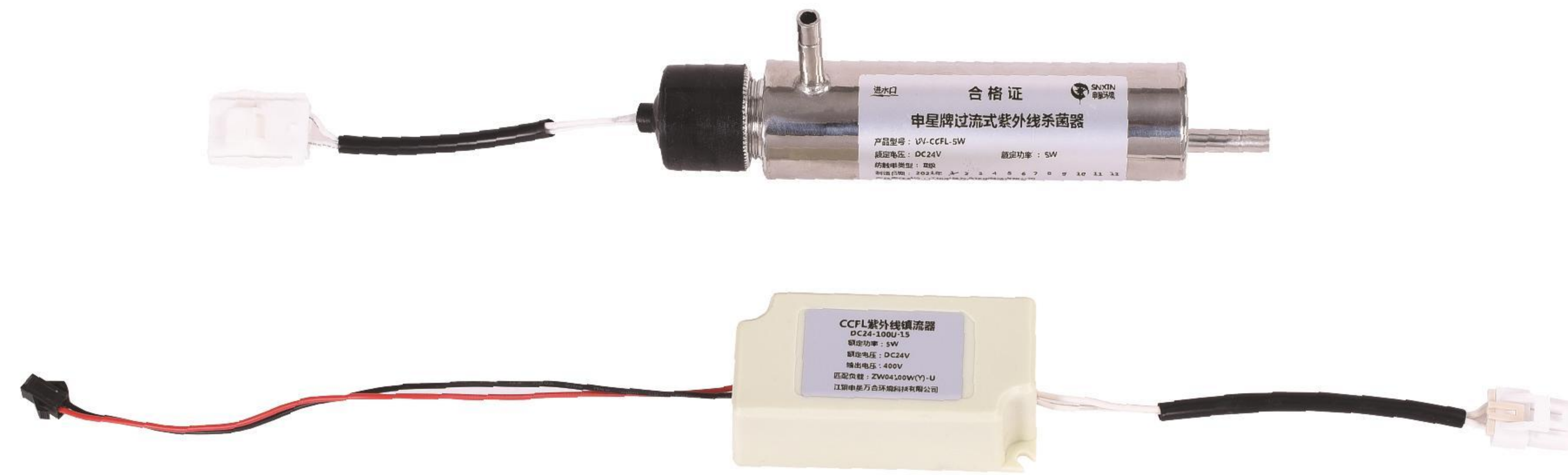
“High quality is from technology”, excepting establishing a serials of system to control quality, our company has got the ISO9001:2015 international quality system and CE certification, and been rewarded as an enterprises with good reputation, winning the title of “Superior-quality Product”. By superior quality and service, SNXIN has been a popular brand in China. And export to USA, Europe, South Korea, Japan and South-East Asia.



# Certificate



# UV Sterilizer

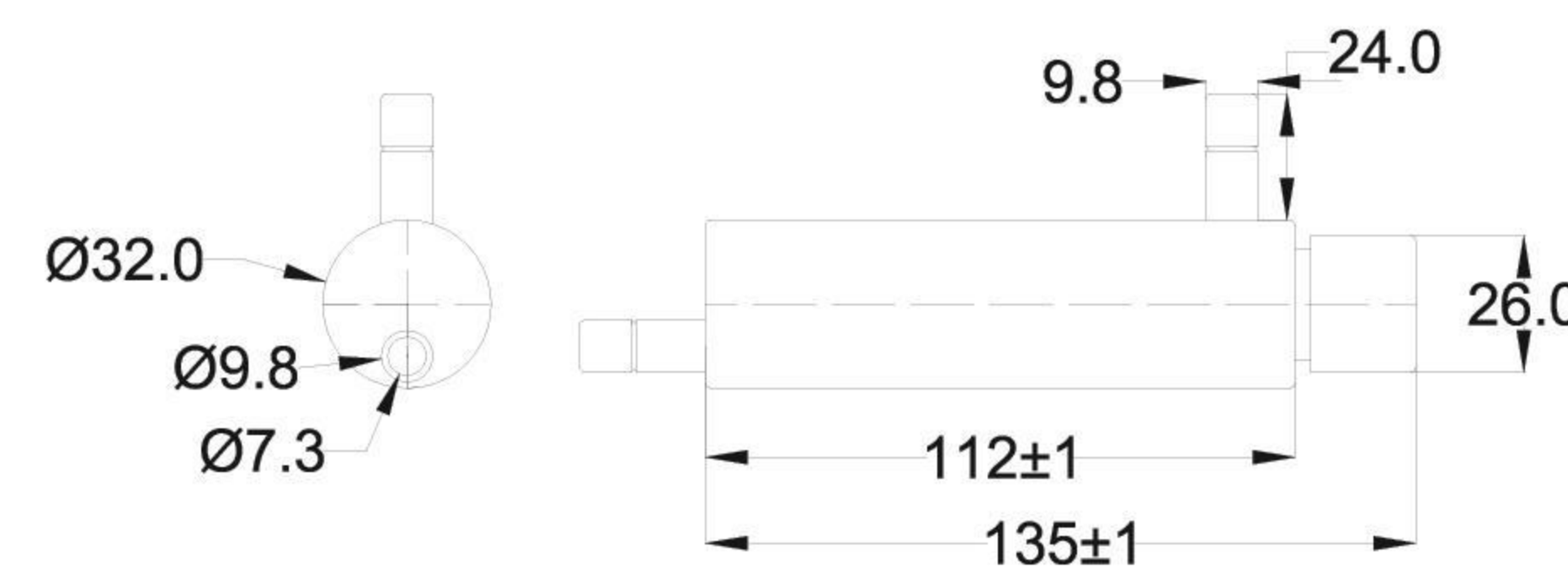


This sterilizer is a small-flow series mainly installed in water purifiers for home and commercial use. It has a sterilization rate of 99.9%.

- Advantages:
1. The material used is food-grade stainless steel SUS304 and 316L, which are safe and harmless.
  2. It effectively deactivates all types of micro-organisms and bacteria and has a high sterilization rate.
  3. The taste of water will not be affected by ultraviolet sterilization.
  4. Its small size facilitates installation.
  5. The service of sold cathode sterilization tube reaches 30000 hours.

## Operating parameter

- Maximum operating water pressure: 10bar (145psi)
- Optimum environment temperature: 2-40°C
- Shell material (or by choice): SUS304, 316L
- Steel < 0.3ppm (0.3mg/l)
- Hardness < 7gpg (120mg/l)
- Turbidity < 1NTU
- Ultraviolet penetration rate > 80%



# UV Sterilizer



Model	Flowrate	UV LAMP	Inlet/Outlet (inch)	L*D*H size (mm)	Lamp Lifetime	Material
UV-110W	5.4 T/H 24GPM	55W*2	1" BSP Male	910*110*110	8000	304SS
UV-165W	8.5 T/H 36GPM	55W*3	1.5" BSP Male	910*135*135	8000	304SS
UV-220W	10.0 T/H 48GPM	55W*4	1.5" BSP Male	910*135*135	8000	304SS
UV-320W	15.0 T/H	80W*4	DN 65	880*159*380	8000	304SS
UV-400W	20.0 T/H	80W*5	DN 80	880*159*380	8000	304SS
UV-480W	30.0 T/H	80W*6	DN 100	880*219*550	8000	304SS
UV-560W	40.0 T/H	80W*7	DN 100	880*219*550	8000	304SS
UV-640W	50.0 T/H	80W*8	DN 125	880*219*550	8000	304SS
UV-720W	60.0 T/H	120W*6	DN 125	1220*219*550	13000	304SS
UV-840W	80.0 T/H	120W*7	DN 150	1220*273*600	13000	304SS
UV-960W	100.0 T/H	120W*8	DN 150	1220*273*600	13000	304SS



# UV Sterilizer



## Product Characteristics

UV sterilizer is made from 304SS or 316SS stainless steel, the casing internal and external are polished to enhance the UV irradiance. Assembling with the high purity quartz tube, matching with the appropriation UV lamp tube for water treatment, sterilization strong, long lifetime, stable and reliable operation, it's bactericidal efficiency is more than 99.9%. Lifetime is more than 8000 hours.

Our UV sterilizer is with ISO,SASO,CE,ROHS certifications.

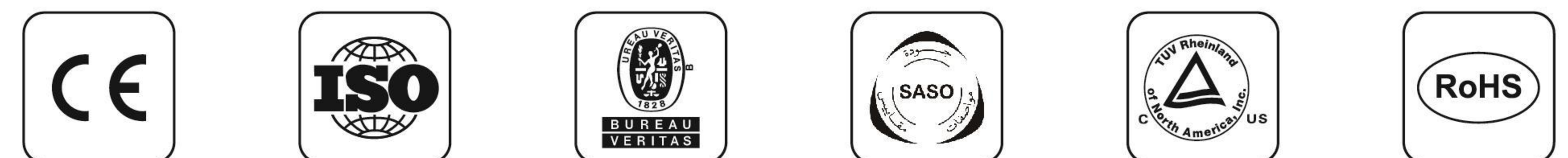
■ The sterilization efficiency of uv for normal bacterias and Virus(UV output at 30000uw/cm<sup>2</sup>).

	Objects	Time		Objects	Time
Bacteria	Baillus anthracis	0.3	Mold spores	Asperqillus niger	0.3-6.7
	Clostridium Tetani	0.3		Mucor Mucedo	4.6
	Dysentery Bailli	1.5		Penicillium roqueforti	0.9-3.0
	Fish disease	Escherichia Coli	0.4	Leuloplakia	2.7
		Staphy loccus albus	1.3	Infectious pancreatic necrosis	4.0
		Mcrocococcus candidus	0.4	Viral hemorrhagic disease	1.6
Virus	Bacteiphage	0.2	Water algae	Blue-green algae	10-40
	Influenza	0.3		Nematode Eggs	3.4
	Poliovirusl	0.8		Green algae	1.2
	Hepatitis B virus	0.8		Protozoa	4.0-6.7

## Application area

Extensively applied in drinking water machine, home water purifier, drink equipment disinfection, waste treatment and other fields.

Model	Flowrate	UV LAMP	Inlet/Outlet (inch)	L*D*Hsize (mm)	Lamp Lifetime	Material
UV-4W	68 L/H 0.3GPM	4W*1	1/4" BSP Female	176*51*51	8000	304SS
UV-10W	114 L/H 0.5GPM	10W*1	1/4" BSP Female	236*51*51	8000	304SS
UV-12W	228 L/H 1GPM	12W*1	1/4" BSP Female	300*51*51	8000	304SS
UV-16W	0.5 T/H 2GPM	16W*1	1/2" BSP Male	330*63*63	8000	304SS
UV-25W	1.5 T/H 6GPM	25W*1	1/2" BSP Male	550*63*63	8000	304SS
UV-30W	2.0 T/H 8GPM	30W*1	3/4" BSP Male	869*63*63	8000	304SS
UV-55W	3.0 T/H 12GPM	55W*1	3/4" BSP Male	910*63*63	8000	304SS



## Horizontal and vertical type UV lamp



### Product characteristic

- Compared with the ordinary UV lamp, the Amalgam lamp UV output is 3 times stronger;
- The lamp lifetime is 16000 hours, and the UV output keep over 85% after 16000 hours;
- It can maintain stable UV output during wide temperature from 5 to 50 °C;
- Use the special amalgam technology, the lamp can be installed vertically.

## Horizontal and vertical type UV lamp

### Technical parameter

Model	Diameter (mm)	Lamp length (mm)	Arc length (mm)	Power (w)	Voltage (v)	Current (mA)	UV output @1M (uw/cm <sup>2</sup> )	(W)	Lamp life (h)
ZW42D15W-Z357	15	357	278	42	36	1200	110	11	16000
ZW52D15W-Z436	15	436	357	52	45	1200	130	13	16000
ZW75D15W-Z650	15	650	571	75	68	1200	200	23	16000
ZW105D15W-Z843	15	843	764	105	88	1200	320	35	16000
ZW127D15W-Z1000	15	1000	921	127	107	1200	370	42	16000
ZW190D15W-Z1554	15	1554	1475	190	164	1200	480	68	16000
ZW57D19W-Z357	19	357	278	57	32	1800	130	13	16000
ZW72D19W-Z436	19	436	357	72	40	1800	150	16	16000
ZW127D19W-Z843	19	843	764	127	71	1800	400	42	16000
ZW150D19W-Z1000	19	1000	921	150	84	1800	460	50	16000
ZW240D19W-Z1554	19	1554	1475	240	134	2100	600	85	16000
ZW320D19W-Z1554	19	1554	1475	320	154	2100	750	105	16000
ZW470D32W-1554	32	1554	1418	470	95	5000	1050	150	16000
ZW800D38W-1790	38	1790	1700	800	100	8000	2100	300	16000

Note: UV radiation can cause harm to human skin and eyes. Please pay attention to protection when using



### Application area

Large-scale life wastewater treatment, industry wastewater treatment, drinking water, village water supply, purity water, high purity water sea water treatment, center air condition, large-scale ventilation duct, and air disinfection.

## Pre-heat single ended 4 pins UV lamp



### Product characteristic

This small design is very flexible as the T5 diameter;  
Specially applied to professional water and air sterilization.



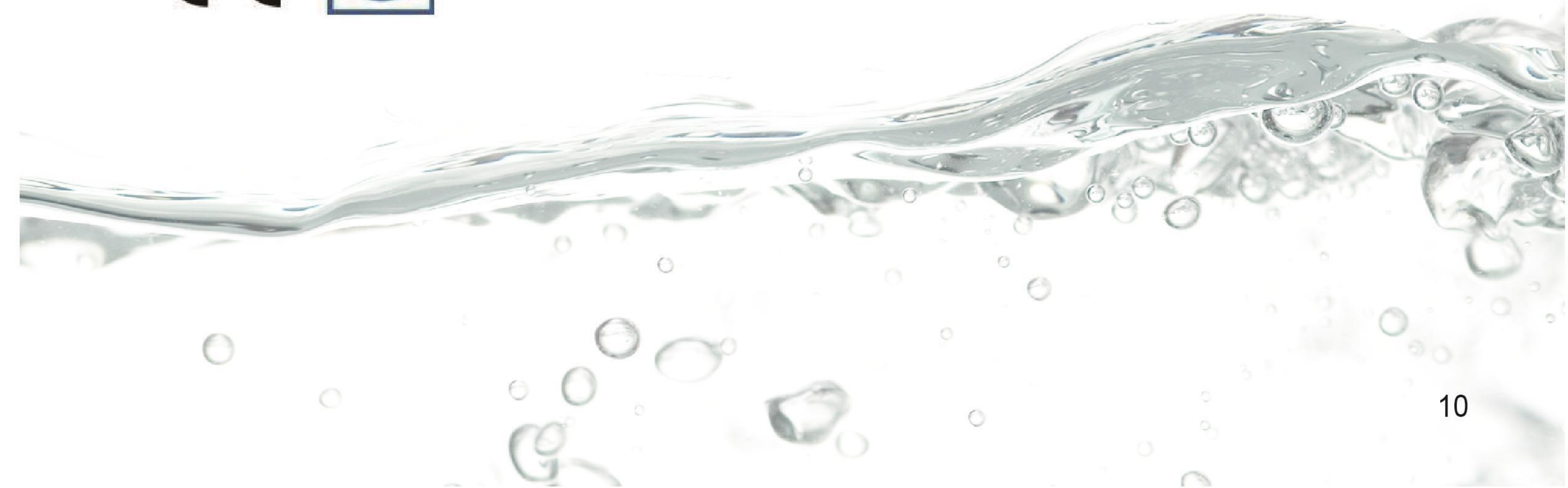
### Application area

- Purity water、life-usage water、ionized water、medicinal water disinfection, the matched equipment for water treatment.
- Photo catalytic degrades organic matter in wastewater, applying to wastewater treatment.

## Pre-heat single ended 4 pins UV lamp

### Technical parameter

Model	Diameter (mm)	Length (mm)	Power (w)	Voltage (v)	Current (mA)	UV output @1M (uw/cm <sup>2</sup> )	Lamp life (h)
ZW10D15W/Y	15	212	10	25	425	26	9000
ZW15D15W/Y	15	303	15	35	425	43	9000
ZW18D15W/Y	15	356	18	42	425	57	9000
ZW21D15W /Y	15	436	21	51	425	72	9000
ZW25D15W/Y	15	550	25	80	425	85	9000
ZW37D15W/Y	15	793	37	100	425	131	9000
ZW40D15W/Y	15	851	40	110	425	150	9000
ZW55D15W/Y	15	1149	55	135	425	174	9000
ZW75D15W/Y	15	1554	75	200	425	210	9000
ZW80D15W/Y	15	846	80	120	800	270	9000
ZW120D15W/Y	15	1149	120	170	800	350	9000
ZW150D15W/Y	15	1554	150	220	800	420	9000



## High output UV germicidal lamp



### Product characteristic

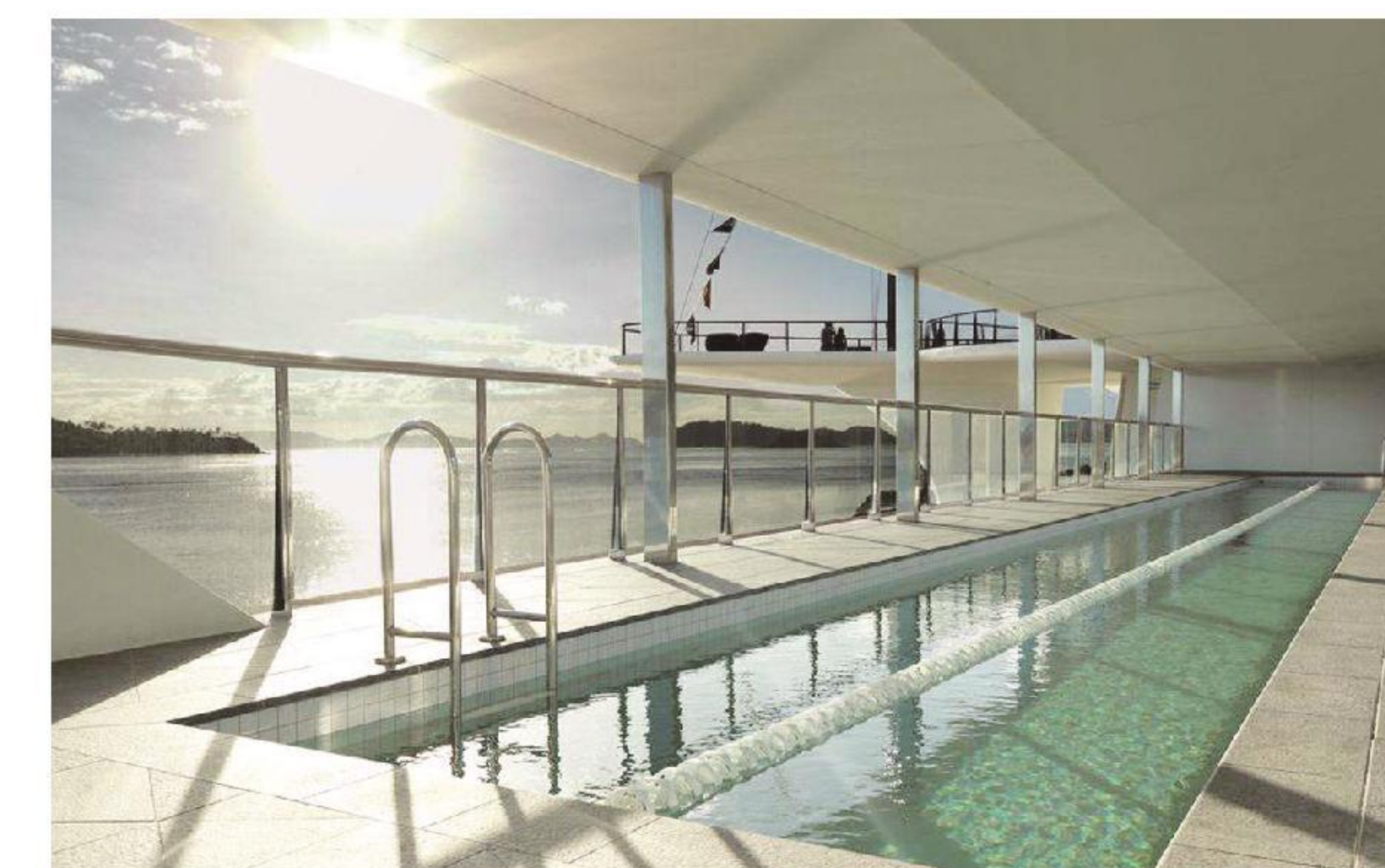
High output quartz ultraviolet lamp, compared with the same length standard lamp, the uv output can be increased by 35%--50%,using 120V or 220V ballast. When high output lamp works in a standard preheat ballast circuit, in terms of price and volume, it is significantly lower than traditional ballasts. There are double-end single pin, double-end 2 pins, single-end 4 pins for your choice, and also the size is as your request.

## High output UV germicidal lamp

### Technical parameter

Model	Diameter (mm)	Length (mm)	Arc length (mm)	Power (w)	Voltage (v)	Current (mA)	UV output @1M (uw/cm <sup>2</sup> )	Lamp life (h)
GHO357T5LVH	15	357	277	28	38	800	70	12000
GHO406T5LVH	15	406	326	35	45	800	80	12000
GHO436T5LVH	15	436	356	48	60	800	120	12000
GHO550T5LVH	15	550	470	52	65	800	160	12000
GHO610T5LVH	15	610	530	58	73	800	170	12000
GHO36T5LVH	15	843	763	87	110	800	260	12000
GHO846T5LVH	15	846	766	90	113	800	265	12000
GHO893T5LVH	15	893	813	95	120	800	270	12000
GHO48T5LVH	15	1149	1069	120	75	800	325	12000
GHO64T5LVH	15	1554	1474	155	195	800	380	12000

Note: UV radiation can cause harm to human skin and eyes. Please pay attention to protection when using



### Technical parameter

High output quartz UV lamp is widely used in air disinfection, surface disinfection and water treatment because of the long lifetime and great germicidal effect.

## UV lamp for exhaust gas treatment



The SNXIN UV lamp can offer you best solution to treat exhaust gas. Most pollutant such as benzene series, lipid, ethers, hydrocarbon or acid and alkaline oxide can directly absorb UV to generate photodecomposition, which will transfer the harmful substance to harmless matter.

## UV lamp for exhaust gas treatment

### Technical parameter

Model	Diameter (mm)	Length (mm)	Arc length (mm)	Power (w)	Voltage (v)	Current (mA)	UV output @1M (uw/cm <sup>2</sup> )	Lamp life (h)	Lamp holder
ZW41D15Y	15	843	762	41	98	425	136	12000	G10Q
ZW55D15Y	15	1149	1067	55	135	425	174	12000	G10Q
ZW75D15Y	15	1554	1474	75	179	425	223	12000	G10Q
ZW87D15Y	15	843	755	87	110	800	260	12000	G10Q
ZW95D15Y	15	893	815	95	115	800	270	12000	G10Q
ZW155D15Y	15	1554	1421	155	195	800	380	12000	G10Q
ZW150D15Y/H	15	810	780	150	220	800	360	12000	2G11
ZW150D15Y/U	15	810	780	150	220	800	360	12000	2G11

Note: UV radiation can cause harm to human skin and eyes. Please pay attention to protection when using



### Technical parameter

Used in chemical plant, electronic factory, printing factory, painting workshop, painting factory, food factory, rubber factory, paint factory, petrochemical industry, etc..

# Waterproof UV lamp for aquarium



## Product characteristic

Usage the quartz sleeve of outer diameter 26mm match with internal ballast, compaction structure, easy to install and operate.



## Technical parameter

Applied in pond, fish pool disinfection. Also can be installed on storage drinking water tank to disinfect and prevent from the second pollution.

# Waterproof UV lamp for aquarium

## Technical parameter

Model	Diameter (mm)	Length (mm)	Power (w)	Voltage (v)	Current (mA)	UV output @1M (uw/cm <sup>2</sup> )	Lamp life (h)
UV-10W	26	412	10	32	425	26	9000
UV-15W	26	490	15	44	425	43	9000
UV-20W	26	545	20	52	425	57	9000
UV-30W	26	810	30	80	425	85	9000
UV-40W	26	1050	40	110	425	131	9000

Note: UV radiation can cause harm to human skin and eyes. Please pay attention to protection when using

## The sterilization efficiency of uv for normal bacterias and Virus(UV output at 30000uw/cm<sup>2</sup>).

	Objects	Time(/s)		Objects	Time(/s)
Bacteria	Bacillus anthracis	0.3	Mold spores	Aspergillus niger	0.3-6.7
	Clostridium Tetani	0.3		Mucor Mucedo	4.6
	Dysentery Bacilli	1.5		Penicillium roqueforti	0.9-3.0
	Fish disease	Escherichia Coli	0.4	Leukoplakia	2.7
		Staphylococcus albus	1.3	Infectious pancreatic necrosis	4.0
		Micrococcus candidus	0.4	Viral hemorrhagic disease	1.6
Virus	Bacteriophage	0.2	Water algae	Blue-green algae	10-40
	Influenza	0.3		Nematode Eggs	3.4
	Poliovirus 1	0.8		Green algae	1.2
	Hepatitis B virus	0.8		Protozoa	4.0-6.7



## Waterproof UV lamp for aquarium



### Product characteristic

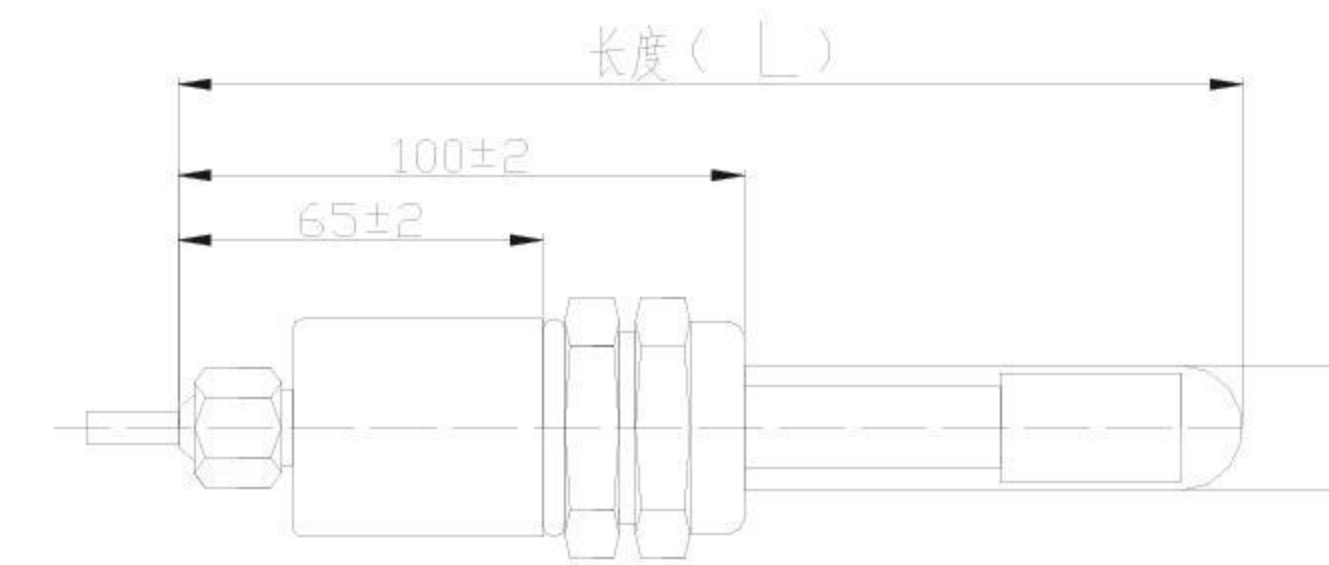
Usage the quartz sleeve of outer diameter 26mm match with internal ballast, compaction structure, easy to install and operate.

### Technical parameter

Model	Diameter (mm)	Length (mm)	Power (w)	Current (mA)	Lamp life (h)
UV-5W	19	140	5	425	9000
UV-7W	19	170	7	425	9000
UV-9W	19	200	9	425	9000
UV-11W	19	235	11	425	9000
UV-20W	31	345	20	425	9000

Note: UV radiation can cause harm to human skin and eyes. Please pay attention to protection when using

## J23/J29 Submersible UV lamp



### Product characteristic

Usage the quartz glass tube with UV transmissivity over 95% matched with UV lamp tube, connecting external ballast, composing integrated water immersion lamp. Easy to operate, small volume, good disinfection effect.

### Technical parameter

Applied in water treatment ,such as fishpond and aquarium disinfection.



### Technical parameter

Model	Diameter (mm)	Length (mm)	Power (w)	Voltage (v)	Current (mA)	UV output @1M (uw/cm <sup>2</sup> )	Lamp life (h)
UV-10W-Z212	23	292	10	32	425	26	9000
UV-15W-Z303	23	383	15	44	425	43	9000
UV-25W-Z550	23	630	25	80	425	85	9000
UV-40W-Z851	23	931	40	110	425	150	9000
UV-55W-Z1149	23	1229	55	180	425	174	9000
UV-120W-Z1149	23	1229	120	90	800	350	9000
UV-150W-Z1554	23	1634	150	110	800	420	9000
UV-250W-Z1554	29	1634	250	130	2100	600	16000
UV-320W-Z1554	29	1634	320	154	2100	750	16000

## Water disinfection integrated UV lamp



### Product characteristic

Usage the quartz glass tube with UV transmissivity over 90% matched with UV lamp tube, connecting external ballast, composing integrated water immersion lamp. Easy to operate, small volume, good disinfection effect.

### Technical parameter

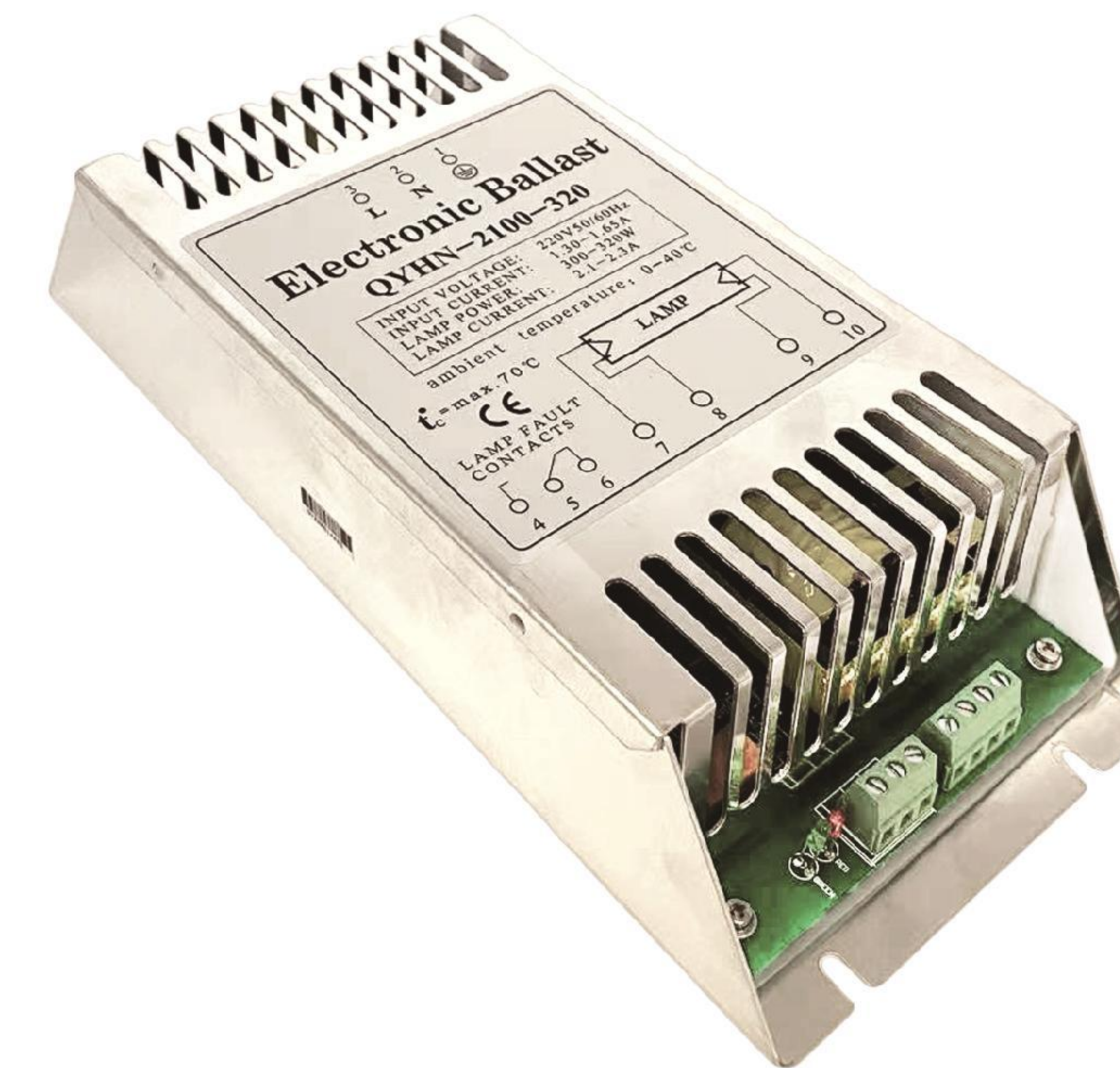
Applied in water treatment, such as fishpond and aquarium disinfection.



### Technical parameter

Model	Diameter (mm)	Holder diameter (mm)	Length (mm)	Power (w)	Lamp life (h)
UV-10W-Z212	23	40	242	10	9000
UV-15W-Z303	23	40	333	15	9000
UV-28W-Z550	23	40	580	28	9000
UV-40W-Z851	23	40	881	40	9000
UV-55W-Z1149	23	40	1179	55	9000
UV-75W-Z1554	23	40	1580	75	9000
UV-120W-Z1149	23	40	1179	120	9000
UV-150W-Z1554	23	40	1580	150	9000

## Electronic Ballast QYHN-2100-320



Electronic Ballast for High Output or Standard output UV lamps  
Preheat start Ballast QYHN-2100-320

<b>Size</b>	249*108*57mm	<b>AC</b>	220-240V 50/60Hz
<b>Lamp Power</b>	200~320W (Max.320W)	<b>Wire</b>	Max.3m
<b>Lamp Current</b>	2.0-2.2A	<b>tc</b>	Max.70°C
<b>Preheat Time</b>	12s	<b>ta</b>	-15~40°C
<b>Certification</b>	CE	<b>Protection Level</b>	IP20
<b>Weight</b>	0.65KG		

### Installation Requirement

- Relay contacts: Potential free load: 50~500mA at 24~277V AC 50~500mA at 5~30VDC
- Max: Cable length between the ballast and the lamp:10m
- THD: <10%

### Features

- To be used with four-wire lamps
- Lamp status indication via LED indicators
- Lamp status forwarding potential free relay contacts for lamp on/lamp fault
- Green LED: lamp on
- Red LED: lamp fault

# Electronic Ballast PH-800-150W



Electronic Ballast for High Output or Standard output UV lamps  
Preheat start Ballast PH-800-150W

Size	200*63*30mm	AC	220-240V 50/60Hz
Lamp Power	1*95~150W 2*35~75W	Wire	Max 1.5m
Lamp Current	0.75-0.85A	tc	Max.70°C
Certification	CE	ta	-15~40°C
Protection Level	IP20	Weight	0.25KG
Lamp Type	1*GHO64T5L GPH1554T5HO TUV64T5HO TUVPL-L95WHO TL100W 2*GPH357T5HO GPH436T5HO GPH846T5HO GPH893T5HO GHO36T5L TUV36T5HO TUV55WHO TUV75WHO TUVPL-L35WHO TUPL-L60WHO		

## Installation Requirement

- LED Specification: VF=1.8-3.6v IF=5-20mA

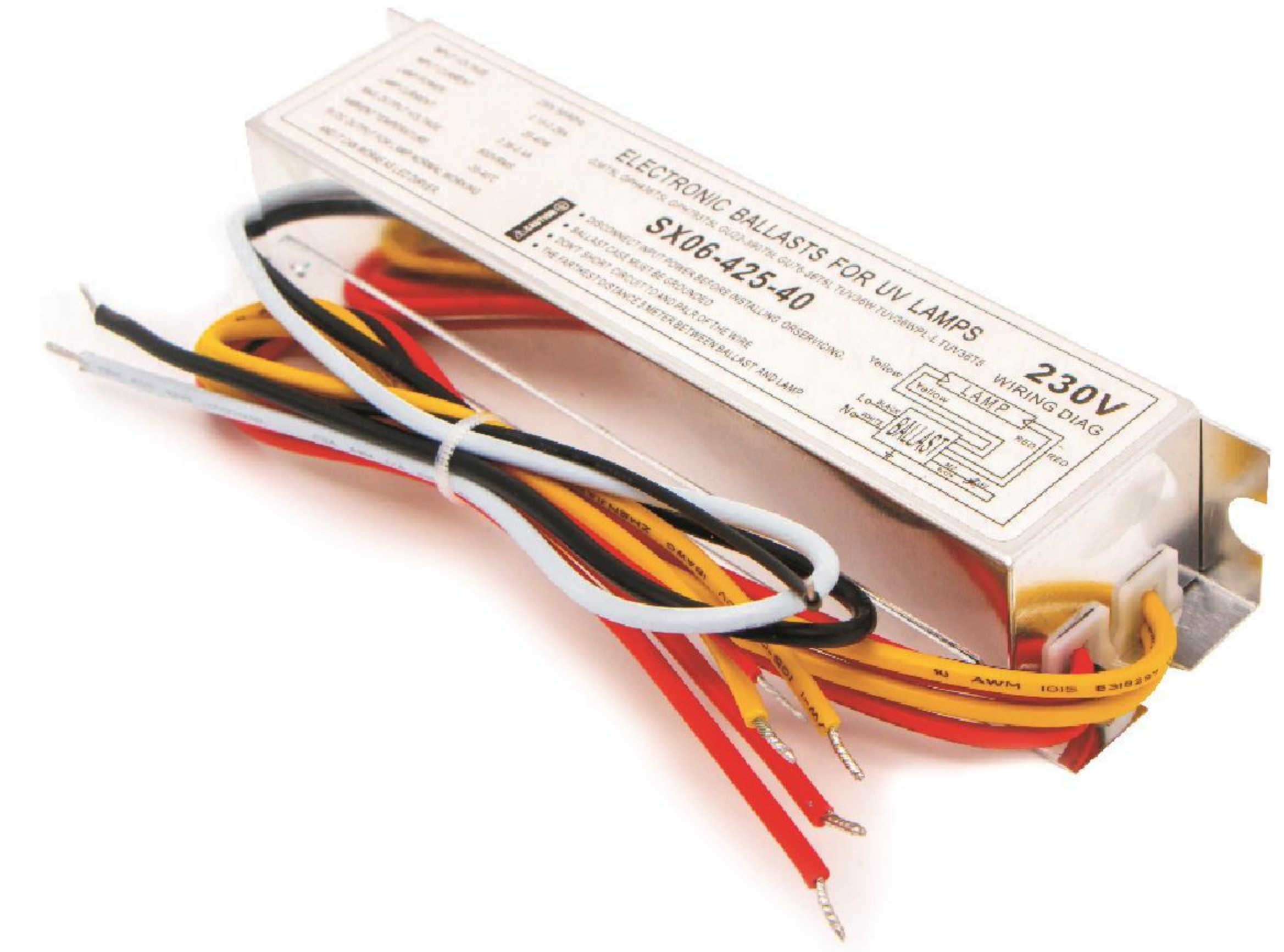
## Mounting Restrictions

- Disconnect input power before installing or servicing
- Ballast case must be grounded
- Don't short any two wires of the input and output wires
- For indoor use only

## Features

- Lamp status indication via LED indicators
- Green LED: lamp on
- Red LED: lamp fault or no lamp

# Electronic Ballast SX06-425-40



Electronic Ballast for High Output or Standard output UV lamps  
Preheat start Ballast SX06-425-40

Size	164*38*29mm	AC	220-240V 50/60Hz
Lamp Power	21~40W	Wire	Max.1.5m
Lamp Current	0.38-0.43A	tc	Max.70°C
Certification	CE	ta	-15~40°C
Protection Level	IP64	Weight	0.2KG
Lamp Type	GPH436T5 GPH793T5 GPH843T5 TUV36T5 TUV25WT5 TUVPL-L36W		

## Installation Requirement

- LED Specification:VF=1.8-3.6v IF=5-20mA
- Max.cable length between the ballast and the lamp:1.5m.

## Mounting Restrictions

- Disconnect input power before installing or servicing
- Ballast case must be grounded
- Don't short any two wires of the input and output wires
- For indoor use only

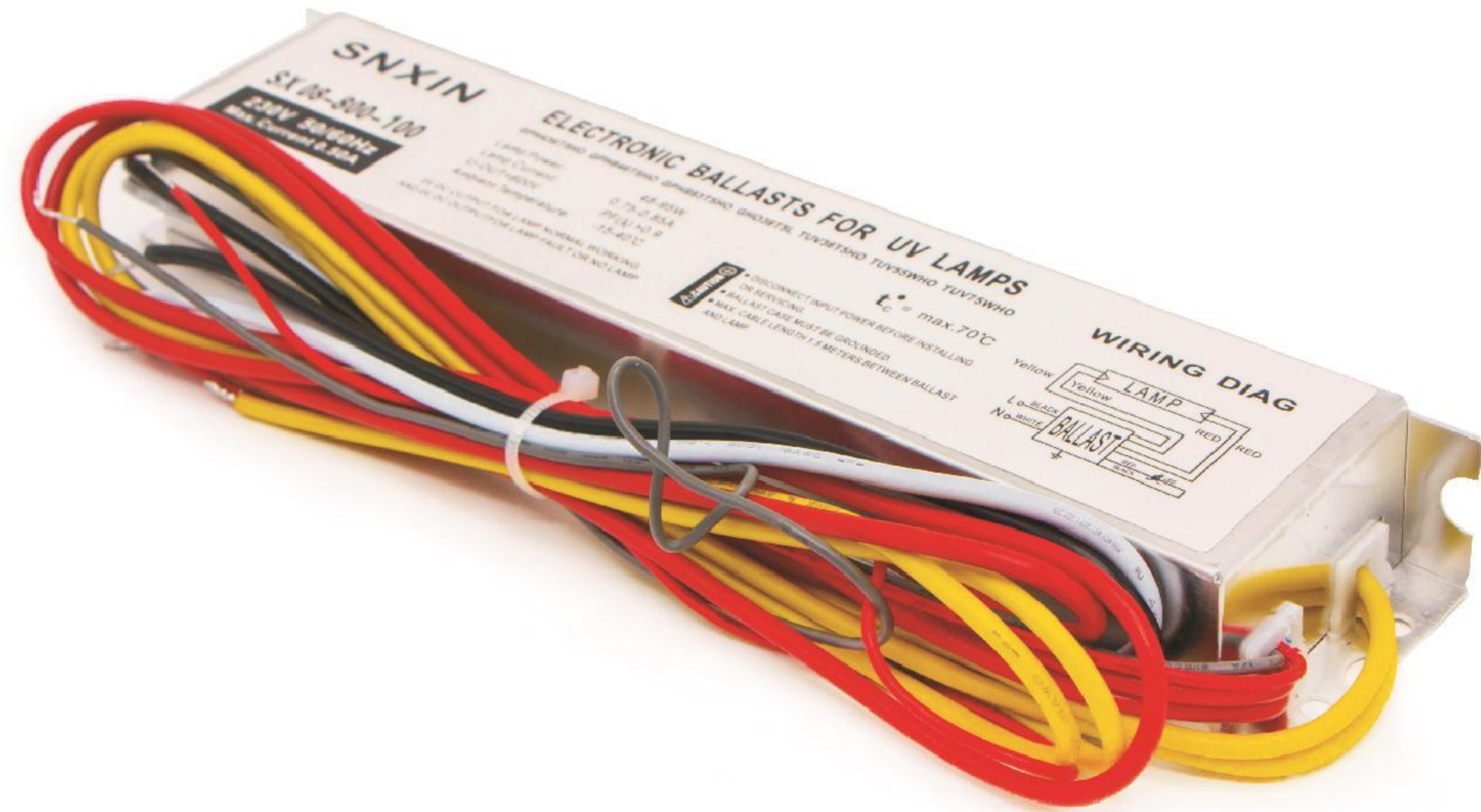
## Applications

- All areas of applications include UVlamps
  - Air purification
  - Aquarium
  - Industrial water treatment

## Features

- For applications with less than one switch-on cycle per day (otherwise preheat start ballasts are recommended)
- Lamp status indication via DC signal output (Connected LED Requirement)
- DC 5V±5% (5mA):lamp on
- DCOV: lamp fault or no lamp

## Electronic Ballast SX08-800-100



Electronic Ballast for High Output or Standard output UV lamps  
Preheat start Ballast SX08-800-100

<b>Size</b>	215*42*32mm	<b>AC</b>	220-240V 50/60Hz
<b>Lamp Power</b>	55-95W	<b>Wire</b>	Max.1.5m
<b>Lamp Current</b>	0.70-0.80A	<b>tc</b>	Max.70°C
<b>Certification</b>	CE	<b>ta</b>	-15~40°C
<b>Protection Level</b>	IP64	<b>Weight</b>	0.25KG
<b>Lamp Type</b>	GHO36T5 GPH846T5HO GPH893T5HO TUV36T5HO TUV55WHO TUV75WHO TUVPL-L60WHO TUVPL-L95WHO		

### Installation Requirement

- Lamp Status Indication via DC signal output
- LED Specification:VF=1.8-3.6V IF=5-20mA
- Max.cable length between the ballast and the lamp:3m

### Features

- Lamp status indication via DC signal output (Connected LED Requirement)
- DC 5V±5% (5mA): lamp on
- DCOV: lamp fault or no lamp
- For applications with less than one switch-on cycle per day (Otherwise preheat start ballasts are recommended)

## Electronic Ballast

### Electronic ballast for Standard output UV lamps

<b>Size</b>	105*64*54mm	<b>tc</b>	Max.70°C
<b>Certification</b>	CE	<b>ta</b>	-15~40°C
<b>Protection Level</b>	IP20	<b>Power Factor</b>	>0.55
<b>Alarm Function</b>	LED & BUZZLE	<b>Weight</b>	0.25KG
<b>Lamp Type</b>	GPH212T5 GPH287T5 GPH303T5 GPH330T5 GPH436T5 GPH550T5 GPH793T5 GPH851T5 GPH925T5 GPH1149T5		



Type	Input Voltage (V)	Input Power (W)	Input Current (A)	Power Per Lamp (W)	Lamp Current (A)
10W	220V	10.5W	0.09	8W	0.34A
12W	220V	13.5W	0.10	11W	0.34A
16W	220V	17W	0.13	14W	0.47A
25W	220V	27W	0.22	24W	0.36A
40W	220V	43W	0.30	38.5W	0.36A
55W	220V	48W	0.35	43W	0.40A

### Lamp Status Indication Via LED Indicators

- Green LED: lamp on
- Red LED: lamp fault
- Buzzer function: when the tube failure occurs
- Buzzer will be intermittent sound

### Mounting Restrictions

- Disconnect input power before installing or servicing
- Don't short any two wires of the four outputs

### Technical Specifications

- Mains frequency: 50/60HZ
- Efficiency: >90%
- Operating frequency: 40-60KHZ

### Features

- Starting: preheat
- Applications:
  - Air purification
  - Aquarium
  - Water treatment

# Electronic Ballast



Electronic ballast for Standard output UV lamps

Size	101*67*52mm	tc	Max.70°C
Power Factor	>0.55	ta	-15~40°C
Power	25-55W	Certification	CE
Alarm Function	LED	Protection Level	IP20
Lamp Type	GPH436T5 GPH550T5 GPH620T5 GPH793T5 GPH851T5 GPH925T5 GPH1149T5		
Weight	0.3KG		

Type	Input Voltage (V)	Input Power (W)	Input Current (A)	Power Per Lamp (W)	Lamp Current (A)
4W	220V	5.5W	0.55	4W	0.16A
6W	220V	7W	0.65	5.5W	0.26A
12W	220V	13W	0.10	11W	0.35A
16W	220V	17W	0.12	14.5W	0.36A
25W	220V	29W	0.21	26.5W	0.35A
30W	220V	40W	0.28	35W	0.34A
40W	220V	41W	0.29	38W	0.37A
55W	220V	47W	0.40	42W	0.40A

Electronic ballast for Standard output UV lamps

Size	78*51*44mm	tc	Max.70°C
Power Factor	>0.55	ta	-15~40°C
Power	4-16W	Certification	CE
Alarm Function	LED	Protection Level	IP20
Lamp Type	GPH212T5 GPH287T5 GPH303T5 GPH330T5		
Weight	0.15KG		

### Lamp Status Indication Via LED Indicators

- Green LED: lamp on
- Red LED: lamp fault

### Mounting Restrictions

- Disconnect input power before installing or servicing
- Don't short any two wires of the four outputs

### Technical Specifications

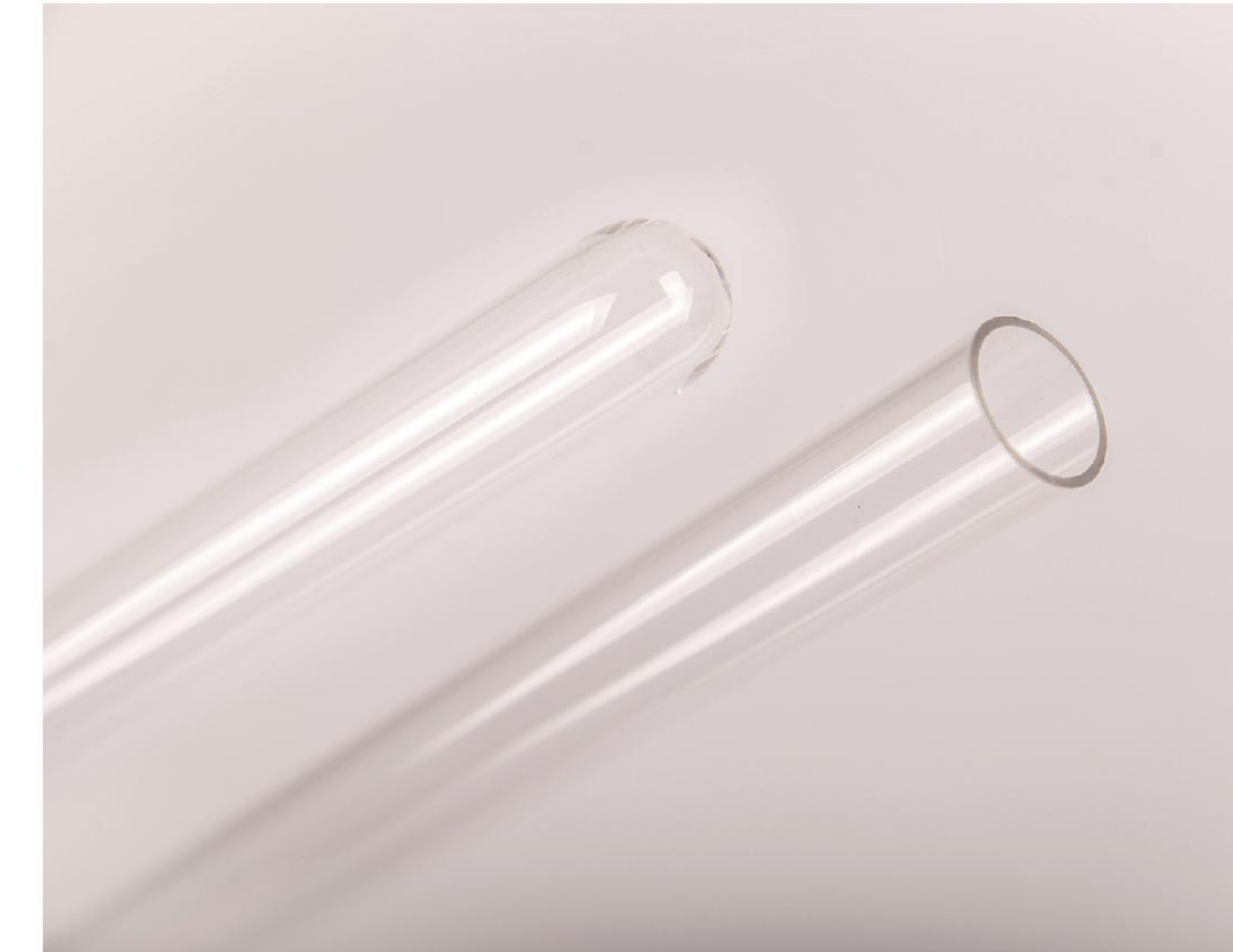
- Mains frequency: 50/60HZ
- Efficiency: >90%
- Operating frequency: 40-60KHZ

### Features

- Staring:preheat
- Applications:
  - Air purification
  - Aquarium
  - Water treatment



# Quartz Sleeve



Provides different kinds of quartz sleeve, including different diameter, different length, single-ended, double-ended and special shape.

Widely used to water treatment, air disinfection, photochemical reaction and other special equipment.

### Technical Data

UV Transmittance	β-OH	Density Kg.m <sup>3</sup> (X10 <sup>3</sup> )	Thermal Expansion	Deformation Point(°C)	Young Modulus (Pa)	Diameter (mm)
95≥%	<2PPM	2.2	0.66	1110	7.3X10 <sup>5</sup>	23-40

Note: Length, diameter, and shape as your needs to make.

Length(mm)	Diameter(mm)	Thickness (mm)
240	23	1.5
300	23	1.5
353	23	1.5
575	23	1.5
895	23	1.5
936	23	1.5
1200	23	1.5
1600	29	2.0
600	33	2.5
1220	33	2.5