

# 1.5KW

## GW型卧式三相铝壳(刹车)马达减速机

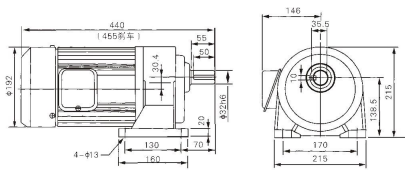
GW.HORIZONTAL TYPE WITH ALUMINOM PLATE 3PHAS (BRAKE) GEAR MOTOR

### ▶ 马达尺寸图 Dimensions chart

单位: mm

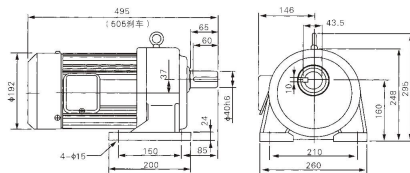
#### GL(H)W-32-1500-3~30

轻负载缩框型GL(H)W-32-1500-40~90

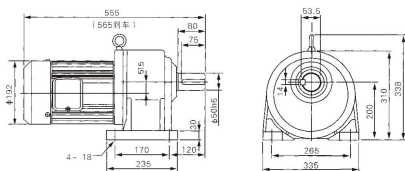


#### GHW-40-1500-35~100

轻负载缩框型GHW-40-1500-110~200



#### GHW-50-1500-110~200



注: 缩框型为轻负载, 无大惯性场合中使用。为不正当设计, 如非必要请勿使用。

# 1.5KW

## Gf型立式三相铝壳(刹车)马达减速机

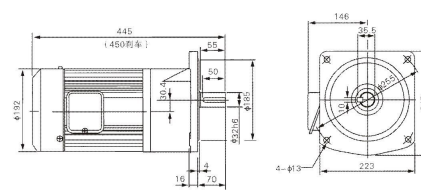
GF.VERTICAL TYPE WITH ALUMINOM PLATE 3PHAS (BRAKE) GEAR MOTOR

### ▶ 马达尺寸图 Dimensions chart

单位: mm

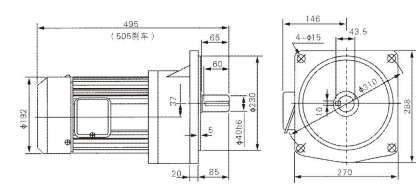
#### GL(H)F-32-1500-3~30

轻负载缩框型GF-32-1500-40~100

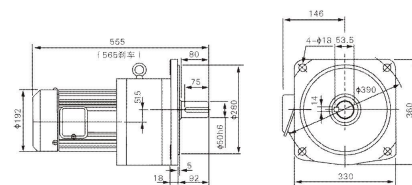


#### GHF-40-1500-35~100

轻负载缩框型GHF-40-1500-110~200



#### GHF-50-1500-110~200



注: 缩框型为轻负载, 无大惯性场合中使用。为不正当设计, 如非必要请勿使用。

## 2.2KW

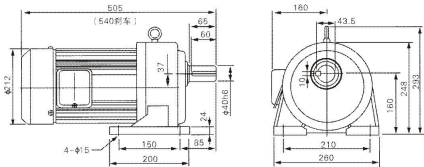
### GW型卧式三相铝壳（刹车）马达减速机

GW.HORIZONTAL TYPE WITH ALUMINOM PLATE 3PHAS (BRAKE) GEAR MOTOR

#### ▶ 马达尺寸图 Dimensions chart

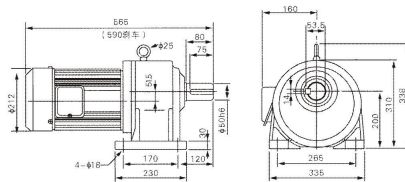
#### GHW-40-2200-3~40

轻负载缩框型GHW-40-2200-50~80



#### GHW-50-2200-50~100

轻负载缩框型GHW-50-2200-110~200



单位: mm

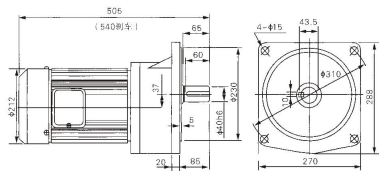
### GF型立式三相铝壳（刹车）马达减速机

GF.VERTICAL TYPE WITH ALUMINOM PLATE 3PHAS (BRAKE) GEAR MOTOR

#### ▶ 马达尺寸图 Dimensions chart

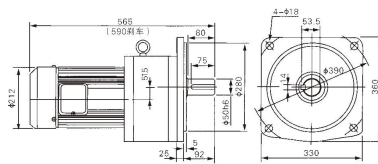
#### GHF-40-2200-3~40

轻负载缩框型 GHF-40-2200-50~80



#### GHF-50-2200-50~100

轻负载缩框型 GHF-50-2200-110~200



单位: mm

## 3.7KW

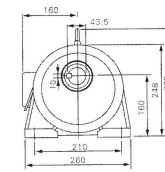
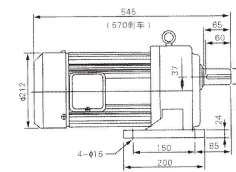
### GW型卧式三相铝壳（刹车）马达减速机

GW.HORIZONTAL TYPE WITH ALUMINOM PLATE 3PHAS (BRAKE) GEAR MOTOR

#### ▶ 马达尺寸图 Dimensions chart

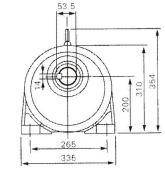
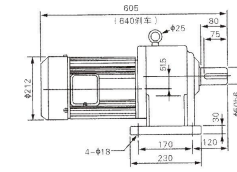
#### GW-40-3700-3~10

轻负载缩框型 GW40-15~200



#### GHF-50-3700-15~60

轻负载缩框型 GHF50-3700-70~110



单位: mm

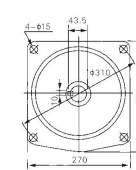
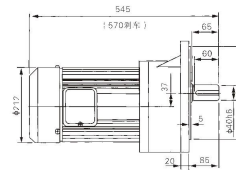
### GF型立式三相铝壳（刹车）马达减速机

GF.VERTICAL TYPE WITH ALUMINOM PLATE 3PHAS (BRAKE) GEAR MOTOR

#### ▶ 马达尺寸图 Dimensions chart

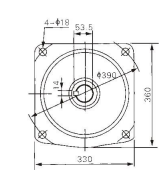
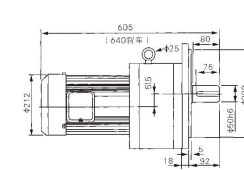
#### GHF-40-3700-3~10

轻负载缩框型 GHF40-3700-15~60



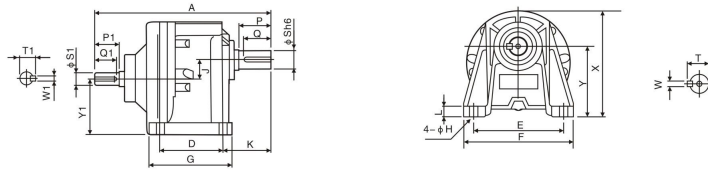
#### GHF-50-3700-15~60

轻负载缩框型 GHF50-3700-70~110



单位: mm

### ► G系列（卧式）双轴型齿轮减速机 G Series Horizontal Type Gear Reducer



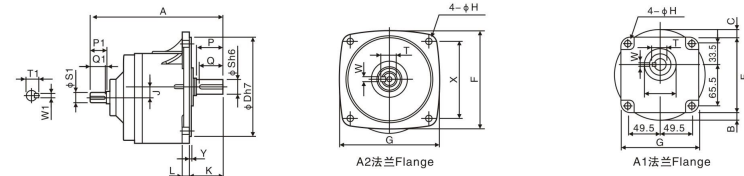
GH(L)W-Z

### ► 马达尺寸表 Dimensions

马力 (KW)	减速比 Gear Ratio	框号 Type	尺寸 (mm)													出力轴端Output Shaft							入力轴端Input Shaft					重量 App.Wt.Kg
			A	D	E	F	G	H	J	K	L	X	Y	Y1	P	Q	S	T	W	P1	Q1	S1	T1	W1				
0.1KW	3-50	18	167	40	110	135	65	9	16.5	50	10	133	88.5	64	30	27	18	20	5	25	22	14	15.5	4	3			
	60-200	22	194	65	130	158	90	11	18	60	13	147	97.5	79.5	40	35	22	25	7	25	22	14	15.5	4	4.2			
0.2KW	5-10	18	167	40	110	135	65	9	16.5	50	10	133	88.5	64	30	27	18	20	5	25	22	14	15.5	4	3			
	12.5-25	18*	167	40	110	135	65	9	16.5	50	10	133	88.5	64	30	27	18	20	5	25	22	14	15.5	4	3			
	12.5-100	22	194	65	130	158	90	11	18	60	13	147	97.5	79.5	40	35	22	25	7	25	22	14	15.5	4	4.2			
	120-200	28	221	90	140	178	120	11	22	62	16	171	116	94	45	40	28	31	7	30	25	16	18	5	5.5			
0.4KW	5-10	22	194	65	130	158	90	11	18	60	13	147	97.5	79.5	40	35	22	25	7	25	22	14	15.5	4	4.2			
	12.5-25	22*	194	65	130	158	90	11	18	60	13	147	97.5	79.5	40	35	22	25	7	25	22	14	15.5	4	4.2			
	12.5-100	28	221	90	140	178	120	11	22	62	16	171	116	94	45	40	28	31	7	30	25	16	18	5	5.5			
0.75KW	5-25	28	221	90	140	178	120	11	22	62	16	171	116	94	45	40	28	31	7	30	25	16	18	5	6.5			
	30-120	32	257	130	170	210	165	13	27	76.5	18	208	140	113	55	50	32	36.5	10	30	25	19	21	5	19.5			
	120-200	40	305	150	210	265	198	15	32.5	89	24	252	162	129.5	65	60	40	44	$\frac{10}{(12)}$	35	30	24	27	7	38			
1.5KW	5-30	32	257	130	170	210	165	13	27	76.5	18	208	140	113	55	50	32	36.5	10	30	25	19	21	5	19.5			
	40-100	40	305	150	210	265	198	15	32.5	89	24	252	162	129.5	65	60	40	44	$\frac{10}{(12)}$	35	30	24	27	7	38			
	120-200	50	352	170	265	321	210	18	40	120	31	305	200	160	75	70	50	53.5	14	45	40	28	31	8	51.2			
2.2KW	15-60	40	305	150	210	265	198	15	32.5	89	24	252	162	129.5	65	60	40	44	$\frac{10}{(12)}$	35	30	28	27	7	39			
	75-120	50	352	170	265	321	210	18	40	120	31	305	200	160	75	70	50	53.5	14	45	40	28	31	8	53			
3.7KW	5-20	40	305	150	210	265	198	15	32.5	89	24	252	162	129.5	65	60	40	44	$\frac{10}{(12)}$	35	30	28	27	7	39			
	25-100	50	352	170	265	321	210	18	40	120	31	305	200	160	75	70	50	53.5	14	45	40	28	31	8	53			

1. \*为轻扭力之机型/\*Indicates motor of smaller torque.  
 2. 40-50筒齿箱上附加O型吊环（高度约50mm）/ "O" type rings shall be attached to the 40-50mm gear box. (add.Height:50mm)  
 <以上数值若有变动，恕不另行通知>/We reserve the right to change without further notice.

### ► G系列（立式）双轴型齿轮减速机 G Series Vertical Type Gear Reducer



GH(L)F-Z

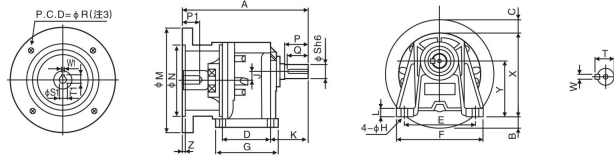
### ► 马达尺寸表 Dimensions

马力 (KW)	减速比 Gear Ratio	框号 Type	尺寸 (mm)													出力轴端Output Shaft							入力轴端Input Shaft					重量 App.Wt.Kg	备注 Remark
			A	D	E	X	F	G	H	J	K	L	Y	P	Q	S	T	W	P1	Q1	S1	T1	W1						
0.1KW	3-50	18	167	50	140	99	120	120	9	16.5	40	12	6	30	27	18	20	5	25	22	14	15.5	4	3	A1法兰				
	60-200	22	194	148	185	131	175	165	11	18	48	12	3	40	35	22	25	7	25	22	14	15.5	4	4.2	A2法兰				
0.2KW	5-10	18	167	50	140	99	120	120	9	16.5	40	12	6	30	27	18	20	5	25	22	14	15.5	4	3	A1法兰				
	12.5-25	18*	167	50	140	99	120	120	9	16.5	40	12	6	30	27	18	20	5	25	22	14	15.5	4	3	A1法兰				
	12.5-100	22	174	148	185	131	175	165	11	18	48	12	3	40	35	22	25	7	25	22	14	15.5	4	4.2	A2法兰				
	120-200	28	221	170	220	156	205	195	12	22	51	16	3	45	40	28	31	7	30	25	16	18	5	5.5	A2法兰				
0.4KW	5-10	22	194	148	185	131	175	165	11	18	48	12	3	40	35	22	25	7	25	22	14	15.5	4	4.2	A2法兰				
	12.5-25	22*	194	148	185	131	175	165	11	18	48	12	3	40	35	22	25	7	25	22	14	15.5	4	4.2	A2法兰				
	12.5-100	28	221	170	220	156	205	195	12	22	51	16	3	45	40	28	31	7	30	25	16	18	5	5.5	A2法兰				
0.75KW	5-25	28	221	170	220	156	205	195	12	22	51	16	3	45	40	28	31	7	30	25	16	18	5	6.5	A2法兰				
	30-120	32	257	185	255	180	248	225	15	27	65	16	3	55	50	32	36.5	10	30	25	19	21	5	19.5	A2法兰				
	120-200	40	305	230	310	219	291	272	15	32.5	85	20	5	65	60	40	44	$\frac{10}{(12)}$	35	30	24	27	7	38	A2法兰				
1.5KW	5-30	32	257	185	255	180	248	225	15	27	65	16	3	55	50	32	36.5	10	30	25	19	21	5	19.5	A2法兰				
	40-100	40	305	230	310	219	291	272	15	32.5	85	20	5	65	60	40	44	$\frac{10}{(12)}$	35	30	24	27	7	38	A2法兰				
	120-200	50	352	280	390	276	372	342	18	40	92	21	5	75	70	50	53.5	14	45	40	28	31	8	51.2	A2法兰				
2.2KW	15-60	40	305	230	310	219	291	272	15	32.5	85	20	5	65	60	40	44	14	35	30	24	27	7	39	A2法兰				
	75-120	50	352	280	390	276	372	342	18	40	92	21	5	75	70	50	53.5	$\frac{10}{(12)}$	45	40	28	31.1	8	53	A2法兰				
3.7KW	5-20	40	305	230	310	219	291	272	15	32.5	85	20	5	65	60	40	44	14	35	30	24	27	7	39	A2法兰				
	25-100	50	352	280	390	276	372	342	18	40	92	21	5	75	70	50	53.5	$\frac{10}{(12)}$	45	40	28	31.1	8	53	A2法兰				

1. \*为轻扭力之机型。  
 1. \*Indicates motor of smaller torque.  
 <以上数值若有变动，恕不另行通知>/We reserve the right to change without further notice.



### ► G系列（卧式）自配马达减速机 G Series Self-Contained Motor Type Gear Reducer



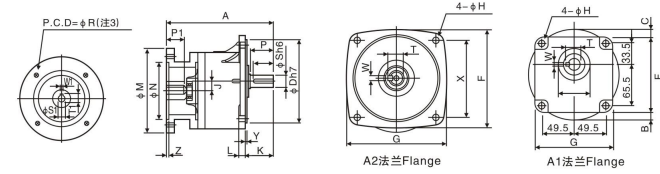
GH(L)W-K

### ► 马达尺寸表 Dimensions

马力 (KW)	减速比 Gear Ratio	框号 Type	尺寸																	输入轴端Input Shaft							输出轴端Output Shaft							重量 App.Wt.Kg
			A	B	C	D	E	F	G	H	J	K	L	M	N	R	X	Y	Z	P1	S1	T1	W1	P	Q	S	T	W						
0.1KW	3-50	18	155	11	22	40	110	135	65	9	16.5	50	10	140	95	115	133	88.5	4	26	11	12.7	4	30	27	18	20.2	5	5					
	60-200	22	175	8	8	65	130	158	90	11	18	60	13	140	95	115	147	97.5	4	26	11	12.7	4	40	35	22	25	7	6.2					
0.2KW	3-10	18	155	11	22	40	110	135	65	9	16.5	50	10	140	95	115	133	88.5	4	26	11	12.7	4	30	17	18	20.2	5	5					
	12.5-25	18*	155	11	22	40	110	135	65	9	16.5	50	10	140	95	115	133	88.5	4	26	11	12.7	4	30	17	18	20.2	5	5					
	12.5-100	22	175	8	8	65	130	158	90	11	18	60	13	140	95	115	147	97.5	4	26	11	12.7	4	40	35	22	25	7	6.2					
	120-200	28	191	-	-	90	140	178	120	11	22	62	16	140	95	115	171	116	4	26	11	12.7	4	45	40	28	31	7	7.5					
0.4KW	3-10	22	185	8	8	65	130	158	90	11	18	60	13	140	95	115	147	97.5	4	33	14	16.2	5	40	35	22	25	7	6.2					
	12.5-25	22*	185	8	8	65	130	158	90	11	18	60	13	160	110	130	147	97.5	4	33	14	16.2	5	40	35	22	25	7	6.2					
	12.5-100	28	201	-	-	90	140	178	120	11	22	62	16	160	110	130	171	116	4	33	14	16.2	5	45	40	28	31	7	7.5					
0.75KW	3-25	28	201	135	-	90	140	178	120	11	22	62	16	200	130	165	171	116	4.5	43	19	21.7	6	45	40	28	31	7	7.5					
	30-120	32	230	-	-	130	170	210	165	13	27	76.5	18	200	130	165	208	140	4.5	43	19	21.7	6	55	50	32	36.5	10	20.5					
	120-200	40	259	-	-	150	210	265	198	15	32.5	89	24	200	130	165	252	162	4.5	43	19	21.7	6	65	60	44	<sup>10</sup> / <sub>(12)</sub>	39						
1.5KW	3-30	32	246	-	-	130	170	210	165	13	27	76.5	18	200	130	165	208	140	4.5	53	24	27.2	8	55	50	32	36.5	10	20.5					
	40-100	40	275	-	-	150	210	265	198	15	32.5	89	24	200	130	165	252	162	4.5	53	24	27.2	8	65	60	44	<sup>10</sup> / <sub>(12)</sub>	39						
	120-200	50	317	-	-	170	263	321	238	18	40	120	31	200	130	165	305	200	4.5	53	24	27.2	8	80	75	50	53.5	14	52.2					
2.2KW	15-60	40	280	3	-	150	210	265	198	15	32.5	89	24	250	180	215	252	162	4.5	63	28	31.2	8	65	60	44	<sup>10</sup> / <sub>(12)</sub>	40						
	75-120	50	323	-	-	170	265	321	238	18	40	120	31	250	180	215	305	200	4.5	63	28	31.2	8	80	75	50	53.5	14	54					
3.7KW	3-20	40	280	3	-	150	210	265	198	15	32.5	89	24	250	180	215	252	162	4.5	63	28	31.2	8	65	60	44	<sup>10</sup> / <sub>(12)</sub>	40						
	25-100	50	323	-	-	170	265	321	238	18	40	120	34	250	180	215	305	200	4.5	63	28	31.2	8	80	75	50	53.5	14	54					

1. \*为轻扭力之机型/Indicates motor of smaller torque.
  2. 40~50筒齿箱上附加O型吊环（高度约50mm）/"O" type rings shall be attached to the 40~50mm gear box. (add.Height:50mm)
  3. 中间驱螺丝孔0.1~0.4为M8 0.75~1.5为M10 2.2~3.7为M12/Central screw hole for 0.1~0.4 motor shall be M8 Central screw hole for 0.75~1.5 motor shall be M10 Central screw hole for 2.2~3.7 motor shall be M12
- <以上数值若有变动，恕不另行通知>/We reserve the right to change without further notice.

### ► G系列（立式）自配马达减速机 G Series Self-Contained Motor Type Gear Reducer



GH(L)F-K

### ► 马达尺寸表 Dimensions

马力 (KW)	减速比 Gear Ratio	框号 Type	尺寸																	输入轴端Input Shaft							输出轴端Output Shaft							重量 App.Wt.Kg	备注 Remark
			A	B	C	D	E	X	F	G	H	J	K	L	M	N	R	Y	Z	P1	S1	T1	W1	P	Q	S	T	W							
0.1KW	3-50	18	165	20	20	50	140	99	120	120	9	16.5	40	12	140	95	115	6	4	26	11	12.7	4	40	35	22	25	7	6.2	A2法兰					
	60-200	22	175	7	-	148	185	131	175	165	11	18	48	12	140	95	115	3	4	26	11	12.7	4	40	35	22	25	7	6.2	A2法兰					
0.2KW	3-10	18	155	20	20	50	140	99	120	120	9	16.5	40	12	140	95	115	6	4	26	11	12.7	4	30	27	18	20.2	5	5	A1法兰					
	12.5-25	18*	155	20	20	50	140	99	120	120	9	16.5	40	12	140	95	115	6	4	26	11	12.7	4	30	27	18	20.2	5	5	A1法兰					
	12.5-100	22	175	7	-	148	185	131	175	165	11	18	48	12	140	95	115	3	4	26	11	12.7	4	40	35	22	25	7	6.2	A2法兰					
	120-200	28	191	-	-	170	220	156	205	195	12	22	51	16	140	95	115	3	4	26	11	12.7	4	45	40	28	31	7	7.5	A2法兰					
0.4KW	3-10	22	175	7	-	148	185	131	175	165	11	18	48	12	160	110	130	3	4	33	14	16.2	5	40	35	22	25	7	6.2	A2法兰					
	12.5-25	22*	175	7	-	148	185	131	175	165	11	18	48	12	160	110	130	3	4	33	14	16.2	5	40	35	22	25	7	6.2	A2法兰					
	12.5-100	28	202	-	-	170	220	156	205	195	12	22	51	16	160	110	130	3	4	33	14	16.2	5	45	40	28	31	7	7.5	A2法兰					
	120-200	32	226	-	-	185	255	180	248	225	15	27	65	16	160	110	130	3	4	33	14	16.2	5	55	50	32	36.5	10	19	A2法兰					
0.75KW	3-25	28	201	17.5	-	170	220	156	205	195	12	22	51	16	200	130	165	3	4.5	43	19	21.7	6	45	40	28	31	7	7.5	A2法兰					
	30-120	32	230	2	-	185	255	180	248	225	15	27	65	16	200	130	165	3	4.5	43	19	21.7	6	55	50	32	36.5	10	20.5	A2法兰					
	120-200	40	259	-	-	230	310	219	291	272	15	32.5	85	20	200	130	165	5	4.5	43	19	21.7	6	65	60	44	<sup>10</sup> / <sub>(12)</sub>	39	A2法兰						
1.5KW	3-30	32	246	2	-	185	255	180	248	225	15	27	65	16	200	130	165	3	4.5	53	24	27.2	8	55	50	32	36.5	10	20.5	A2法兰					
	40-100	40	275	-	-	230	310	219	291	272	15	32.5	85	20	200	130	165	5	4.5	53	24	27.2	8	65	60	44	<sup>10</sup> / <sub>(12)</sub>	39	A2法兰						
	120-200	50	317	13.5	-	280	390	276	372	342	18	40	92	21	200	130	165	5	4.5	53	24	27.2	8	80	75	50	53.5	14	52.2	A2法兰					
2.2KW	15-60	40	280	2.5	-	230	310	219	291	272	15	32.5	85	20	250	180	215	5	4.5	63	28	31.2	8	65	60	44	<sup>10</sup> / <sub>(12)</sub>	40	A2法兰						
	75-120	50	323	13.5	-	280	390	276	372	342	18	40	92	21	250	180	215	5	4.5	63	28	31.2	8	80	75	50	53.5	14	54	A2法兰					
3.7KW	3-20	40	280	2.5	-	230	310	219	291	272	15	32.5	85	20	250	180	215	5	4.5	63	28	31.2	8	65	60	44	<sup>10</sup> / <sub>(12)</sub>	40	A2法兰						
	25-100	50	323	13.5	-	280	390	276	372	342	18	40	92	21	250	180	215	5	4.5	63	28	31.2	8	80	75	50	53.5	14	54	A2法兰					

1. \*为轻扭力之机型/Indicates motor of smaller torque.
  2. 40~50筒齿箱上附加O型吊环（高度约50mm）/"O" type rings shall be attached to the 40~50mm gear box. (add.Height:50mm)
  3. 中间驱螺丝孔0.1~0.4为M8 0.75~1.5为M10 2.2~3.7为M12/Central screw hole for 0.1~0.4 motor shall be M8 Central screw hole for 0.75~1.5 motor shall be M10 Central screw hole for 2.2~3.7 motor shall be M12
- <以上数值若有变动，恕不另行通知>/We reserve the right to change without further notice.

齿轮减速机的使用及安装 OPERATION AND INSTALLATION OF GEAR REDUCER

减速机安装  
使用前检查

- ◆检查机种、型号、马力、轴方向、减速比、回转方向及入力轴出力轴回转数是否符合。
- ◆注意检查注油情况，先确定是有油，并保持油量在油面积一半以上。

场所

- ◆须装置于平整坚固的底部。
- ◆安装之环境须干燥且通风良好，周围温度-10℃~+50℃，异常高温或低温时请注明。

连接方法

- ◆当连接器用以连接入力或出力轴时，须确实固定并务使两轴平行，底座须以适当螺栓，确保固紧密。
- ◆所有配合均应轻装于轴上，勿使用铁锤，并避免装配过紧而引起轴承损坏。
- ◆滑轮，链轮或齿轮在装配时应尽量靠近轴承以减少弯曲应力。使用适当大小（在出力轴径的6倍以内）与出力轴连接之轮、皮带轮等请配合H7公差使用，可避免发出异声与受损。
- ◆轴面可涂上防锈涂料避免生锈。

马达

- ◆电源电压变动大于10%时，马达会有烧毁之虞，并使出力轴扭降低或异常。
- ◆马达超负荷使用有烧毁之虞。
- ◆马达接线错误会导致马达烧毁。
- ◆湿气过重的环境会使刹车马达的刹车器产生锈蚀，失去刹车功能。
- ◆搭配变频器使用时，如常使用于低频，请使用变频专用马达。
- ◆请在电源供应入线加装保护开关减少马达烧毁。

Usage and Installation

CHECK BEFORE OPERATING

- ◆Make sure that the model type, horse power, shaft direction, reduction ratio, revolution direction and revolutions of input/output shafts match with each other. Check oil level first and make sure the level keeps above half of oil gauge

PLACE

- ◆The gear reducer should be installed in a flat and firm base.
- ◆The installation environment should be dry and well ventilated with ambient temperature 0°C-40°C. Abnormal high or low temperature should be indicated.

CONNECTING METHOD

- ◆If coupler is used to connect input or output shaft, make sure they are firmly fixed and parallel. The base seat should be anchored with proper bolts
- ◆All of the components should be properly assembled to shaft. Avoid hammering and over tight assembly which could damage the bearing
- ◆The pulley, chain pulley and gear shall be assembled as close to the bearing as possible to minimize the curving stress. The chain pulley and belt pulley used to connect the output shaft shall be properly chosen (within 6 times as large as the diameter of Output shaft) and used in accordance with H7 tolerance so as to keep out of abnormal noise and harm to the shaft surface
- ◆The application of anti-rust painting can keep the shaft from rusting.

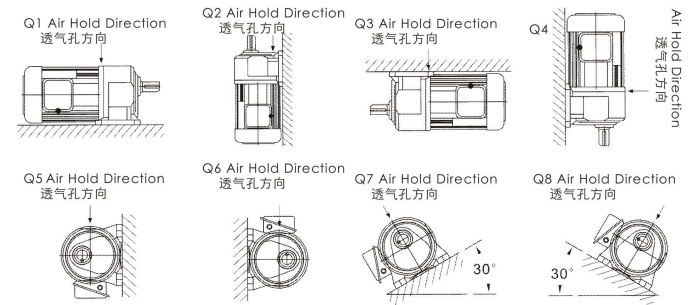
MOTOR

- ◆The voltage variation over 10% could cause motor to burn out and reduce the torque of output shaft.
- ◆Motor is subject to damage due to overload.
- ◆Improper connection could cause motor to burn out
- ◆High-moisture environment could cause the brake of motor rusted and disabled
- ◆An appropriate motor should be applied with the frequency chnverter while the low frequency is required usual condition

▶ 减速机安装图示

出厂标准安装形式: Standard installation method:

- ◆本公司出厂所机种减速机皆通用图形标准安装形式。
- ◆当减速机安装完成后, 请将透气孔上插针打开。
- ◆Standard installation options
- ◆please release the screw hole (at arrow position) before motor running



特殊安装形式: Special

- ◆需要安装形式如图, 请特别告之, 本公司将修改透气孔位置方向。
- ◆当减速机安装完毕, 请将透气孔上插针打开。
- ◆Standard installation direction options
- ◆please release the screw hole (at arrow position) before motor running

