



# WRM-TS

WRM-TS is a wireless m-bus receiver, intended to collect data from various devices, working in modes T or S according to wireless m-bus standard (EN13757-4).

WRM-TS have the following main features and characteristics: Serial RS-232C interface for communicating with external device (computer, communication device/ controller, etc.), wired m-bus interface, slave device in a m-bus network memory for saving data for up to 240 devices, real time clock, several LEDs for work state information, and external power supply (adapter 12V@0.5A) included.

## TECHNICAL FEATURES

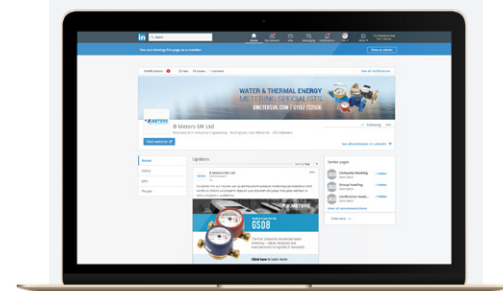
<b>RF band</b>	868Mhz, 12 channels
<b>Wireless m-bus modes</b>	T1, T2, S1, S2
<b>M-bus slave interface</b>	1.5mA
<b>M-bus interface parameters</b>	300 / 1200 / 2400 / 4800
<b>Maximum devices allowed</b>	Up to 240
<b>AES-128 encryption</b>	For addresses 1 – 64
<b>Serial port baud rate</b>	0.3 / 1.2 / 2.4 / 4.8 / 9.6 / 19.2 / 138.4 kbps
<b>Power supply</b>	6 – 12 Vdc / 0.5 A, adapter 2 mm
<b>Max. power consumption @12V DC</b>	<5W
<b>Ambient temperature, operating</b>	-20°C – 50°C
<b>Ambient temperature, storage</b>	-50°C – 85°C
<b>Air humidity, operating &amp; storage</b>	40 – 90%
<b>Dimensions (L/W/H)</b>	125/70/30 mm (without antenna)
<b>Protection class</b>	IP30
<b>Display</b>	3 LEDs (on/RF, RS-232 comm, m-bus)
<b>Weight</b>	170 g

# DESIGNING, PRODUCING AND DISTRIBUTING SOLUTIONS FOR OVER 25 YEARS

B METERS is an Italian company that has been designing, producing and distributing instruments and solutions for measuring the consumption of water and thermal energy used for heating and cooling, for over 25 years.

The yearly production currently exceeds 2M units, putting B METERS in a leading position both at national and European level.

The product range includes turbine (velocity) type single and multi-jet water meters with mechanical or magnetic transmission, Woltmann meters, irrigation meters, flow meters, thermal energy meters and heat cost allocators with direct reading, or complete with integrated modules for the remote transmission of the consumption data.



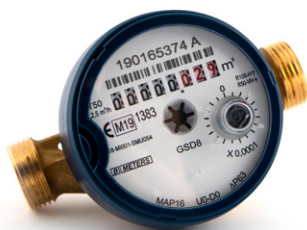
**FOLLOW BMETERS ON LINKEDIN,  
KEEP UP-TO-DATE WITH ALL  
LATEST NEWS AND PRODUCT  
INFORMATION**



EN 1434

EN 834

## THE BMETERS RANGE



**WATER METERS**



**THERMAL ENERGY METERS**



**READING SYSTEMS**



**M-BUS SOLUTIONS**