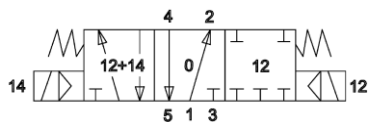


# SET1 MNDSOD 531 701



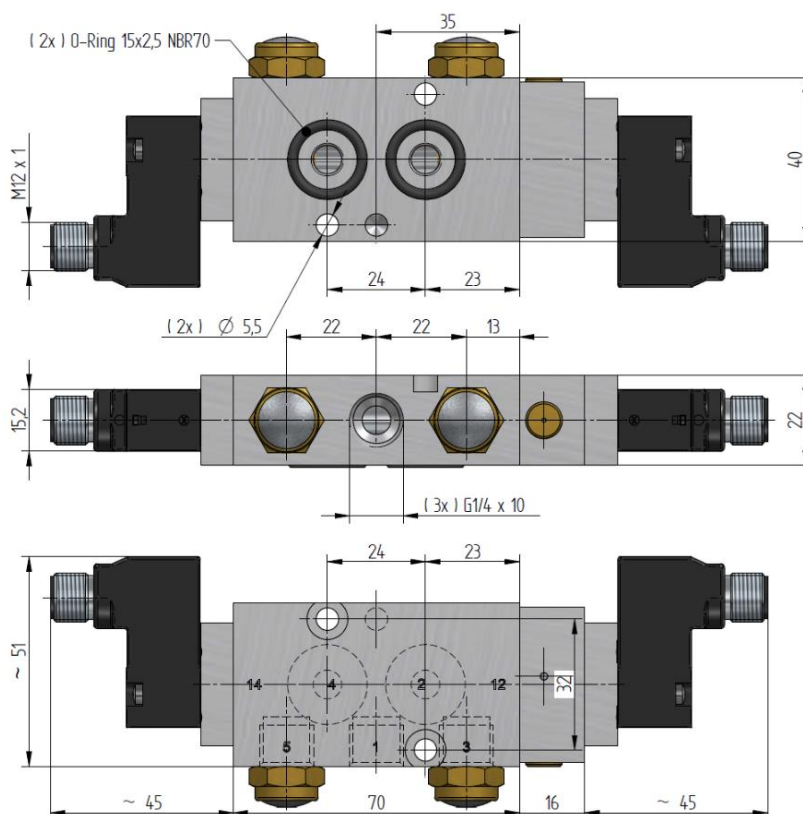
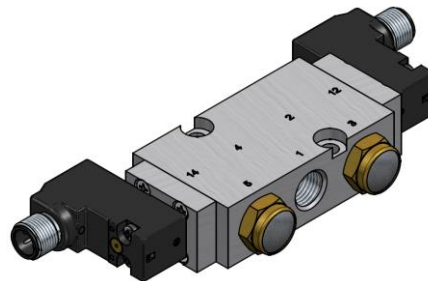
MNDSOD 531 701

5/3-Wege Magnetventil mit Federrückstellung in Mittelstellung.  
Schnittstelle nach NAMUR 1 – 1/4".

Die Ventile sind grundsätzlich mit einer Handhilfsbetätigung zum Drücken ausgestattet.

Lieferumfang:

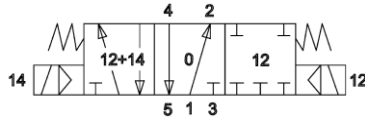
Ventil MNDSOD 531 701 24DC M12 LP  
Zubehör: 1 pin, 2 Schrauben, 2 Schalldämpfer



Anschlüsse	Durchfluss	Arbeitsdruck	Gewicht
G 1/4"	1250 l/min	3 - 8 bar	0,36 kg

Voltage	Toleranz	I	Leistungsaufnahme	LED	Anschluss
24V=	+/- 10%	42 mA	1,0 W	ohne	M12x1

# SET1 MNDSOD 531 701



MNDSOD 531 701

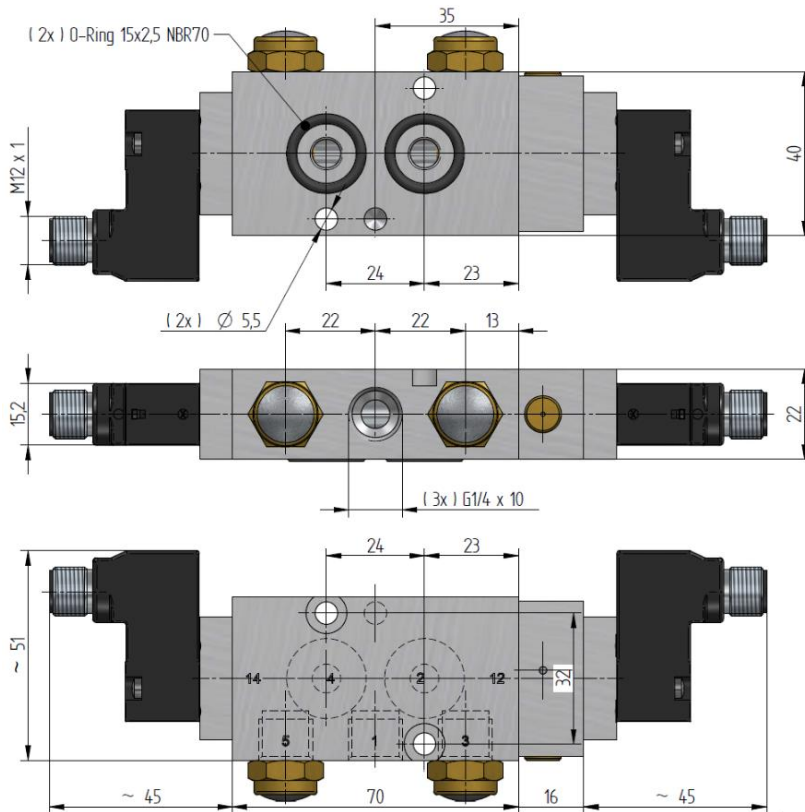
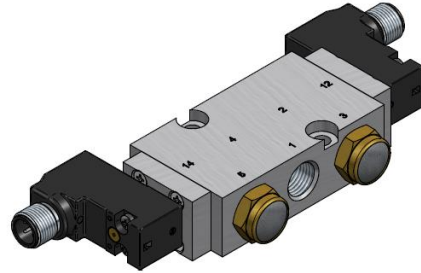
5/3-way solenoid valve with spring return to middle position.  
Interface according to 1/4" NAMUR-standard.

Valves are generally equipped with manual override to push.

Delivery includes:

Valve MNDSOD 531 701 24DC M12 LP

Accessories: 1 pin, 2 screws, 2 silencers



Port size	Air flow	Operating press.	Weight
G 1/4"	1250 l/min	3 - 8 bar	0,36 kg

Voltage	Tolerance	Ampere	Power consumption	LED	Connection
24V=	+/- 10%	42 mA	1.0 W	without	M12x1